

IDERA SQL Secure[®]
Version 3.0

Release notes

IDERA SQL Secure is a security analysis solution that identifies SQL Server security violations and ensures security policies are enforced. Find out who has access to what and identify each user's effective rights across all SQL Server objects. Alert on violations of your corporate policies, monitor changes made to security settings, and provide security audit reports as well as recommendations on how to improve your security model.

To get a quick glimpse into the newest features, fixed issues, and known issues in this release of IDERA SQL Secure, review the following sections of the Release Notes:

- [Learn about key new features in this release](#)
- [Review issues fixed by this release](#)
- [Review previous features and fixed issues](#)
- [See known issues](#)

IDERA SQL Secure tells you who has access to what on your SQL Server databases. [Learn more >>](#)

IDERA Website	Products	Purchase	Support	Community	About Us	Resources	Legal
-------------------------------	--------------------------	--------------------------	-------------------------	---------------------------	--------------------------	---------------------------	-----------------------

New features and fixed issues

IDERA SQL Secure provides the following new features and fixed issues.

3.0 New features

Added SQL Server file import

Users now can import a .csv file containing the SQL Servers they want to import for registration in IDERA SQL Secure. This is an important feature for environments having more than a few SQL Servers as it allows you to bulk import data into IDERA SQL Secure. For more information about this feature, see [Import SQL Server instances](#).

Added tags for easier server management

IDERA SQL Secure now features server group tags to allow you to more easily manage your SQL Server instance snapshots. You can select tags when registering a SQL Server or simply add a tag to your existing instances. Tags allow you to select a specific group of SQL Servers rather than selecting servers one by one. For more information about server group tags, see [Manage server group tags](#).

Added suspect SQL Server logins report

The new Suspect SQL Logins report displays all of the suspect SQL Server Accounts that do not have any assigned permissions, i.e. databases, objects, or server files. For more information about reporting, see [Report on SQL Server Security](#).

Expanded Risk Assessment reporting

IDERA SQL Secure 3.0 includes multiple additions and modifications to the existing Security Checks in the Risk Assessment report. These new checks include:

- **Access**
 - **Files on Drive Using Not Using NTFS.** Updated to support ReFS for SQL Server 2016.
 - **Supported Operating Systems.** Removed support for Microsoft Windows 2003 and added support for Windows 2012, Windows 2012 R2, and Windows 2016.
 - **SQL Jobs and Agent.** Updated to flag any case where a proxy account is not in use.
 - **Encryption Methods.** Updated to flag any case where unsupported encryption methods are in use. Note that beginning with SQL Server 2016, all algorithms other than AES_128, AES_192, and AES_256 are deprecated.
 - **Certificate private keys were never exported.** Verifies that Certificate private keys are exported.
- **Configuration**
 - **Linked Server.** Checks to see if there are linked servers, and then checks to see if the linked server is running as a member of the sysadmin group. Linked servers can lead to performance issues and running them using sysadmin privileges can leave a database vulnerable to corruption.
 - **SQL Server Version.** Checks to make sure a supported version of SQL Server is in use. Flags any case where an unsupported SQL Server version is in use.
 - **Full Text Search Service Running.** Checks to make sure that this service is running on the selected instance.
 - **Unauthorized Accounts Check.** Updated to include checks for roles beyond sysadmin, including the Separation of Duties roles in SQL Server 2014 and the roles surrounding encryption for SQL Server 2016.
 - **Other General Domain Accounts Check.** Update to include checks for general domain accounts such as domain Users, Everyone, and Authenticated Users added to the selected instance.
- **Surface**
 - **SQL Server Available for Browsing.** Updated the name of this check to **SQL Server Browser Running**.

For more information about using reports within IDERA SQL Secure, see [Report on SQL Server Security](#).

3.0 Fixed issues

The following issues are fixed in IDERA SQL Secure:

- Resolved an issue that occurred when trying to register a SQL Server instance, which is clustered and using AlwaysOn Availability Groups. The system tried to register the Cluster Server Name instead of the SQL Server Instance Name.
- Resolved an issue that caused SQL Server administrator accounts to show sysadmin accounts for other servers in the Server Security Report Card.
- IDERA SQL Secure no longer incorrectly pulls database role information from SQL Server 2000 databases.
- Users no longer receive false warning messages when running a snapshot.
- Resolved an issue that caused the system to display authorized accounts as unauthorized when a wildcard was included in the list of authorized accounts in Unauthorized Accounts Are Sysadmins.

IDERA **SQL Secure** tells you who has access to what on your SQL Server databases. [Learn more >>](#)

IDERA Website	Products	Purchase	Support	Community	About Us	Resources	Legal
--------------------------	-----------------	-----------------	----------------	------------------	-----------------	------------------	--------------

Previous features and fixed issues

This build of IDERA SQL Secure includes many fixed issues, including the following previous updates.

2.9 New features

Improved Name Matches selection of rule filter properties

IDERA SQL Secure 2.9 simplifies the process for selecting a named variable when setting filter properties. Click **Any** in the **Name Matches** column of the Filter Properties dialog box, and IDERA SQL Secure displays a dialog box that allows you to see a list of available elements and a list of selected elements, and easily move the databases, tables, views, or functions between the two lists.

The list is populated based on the row where you click **Any**, i.e. if you click to select items from the **Tables where** row, the list displays only tables. To select more than one element at a time, press and hold the Shift key to click the first and last element in a series or press Ctrl and then click each element not in a series. Click **Add** to move elements from the **Available** list to the **Selected** list. Click **Remove** to move elements from the Selected list to the Available list. Search functionality also is available in this dialog box. Note that you can use wildcards when entering a search string. For more information about using Filter Properties, see [Edit filter settings](#).

Enhanced reporting

Expanded some reports to show users within groups

The User Permissions, All User Permissions, and Database Roles reports now provide an option to view access at the user level within a group. The new **Level** field in the report filter allows you to select **Member** to display access results at the group (member) level or select **User** to display access results that show individual user account names within the group as well as whether the account is enabled. For more information about using reports within IDERA SQL Secure, see [Report on SQL Server Security](#).

Additional enhancements to the All User Permissions report

While the All User Permissions report now includes user-level information, it also includes updates that allow you to run the report for one or more specific databases. The All User Permissions report displays user permissions at the object level. IDERA SQL Secure 2.9 includes a new **Database** field and corresponding **All Databases** check box that allows you to enter specific databases to include in the report, or check the box to include all databases within the selected SQL Server.

Clear the **All Databases** check box to enable selection of one or more databases in the displayed list. To select more than one database at a time, press and hold the Shift key to click the first and last databases in a series or press Ctrl and then click each database not in a series. For more information about using reports within IDERA SQL Secure, see [Report on SQL Server Security](#).

Supports SQL Server 2016

IDERA SQL Secure 2.9 and later support SQL Server 2016 for the repository and audited instances. For more information about supported platforms, see [Product requirements](#).

Enumerates group members in a one-way trust

IDERA SQL Secure 2.9 now can enumerate users within a group when the target server is in an environment when IDERA SQL Secure is across domains configured as a one-way trust.

Updates Guest User Enabled Access functionality

The Guest User Enabled Access check now includes msdb, master, and tempdb in the **Approved** user access list for all default templates.

2.9 Fixed issues

The following issues are fixed in IDERA SQL Secure:

- IDERA SQL Secure 2.9 fixes an issue causing IDERA SQL Secure to incorrectly report some servers as failing the Login Audit Level security check.
- An issue that triggered an email notification after data collection that stated that suspect windows were encountered no longer occurs.

2.8 New features

- IDERA SQL Secure now supports SQL Server 2014
- IDERA SQL Secure now supports Always On Availability Groups
- IDERA SQL Secure now allows you to install the SQL Secure Repository on a failover cluster. The installer provides an option to select Cluster installation and specify a cluster node.

- Policy Templates have been updated to use the latest versions of SQL Server and OS:
 - Updated to policy templates:
 - CIS v 2.0 for SQL Server 2005 (from version 1.2)
 - PCI-DSS v 3.0 Guidelines for SQL Server (from version 2.0)
 - HIPAA Guidelines for SQL Server - update security checks as needed e.g. Operating System Version
 - Added templates for:
 - CIS v1.1.0 for SQL Server 2008
 - CIS v1.0.0 for SQL Server 2012
 - MS Best Practices Analyzer for 2008
 - MS Best Practices Analyzer for 2012
- This version had updated to a granular process for Exporting and Importing policies, so that authorized SQL Logins can be excluded from exporting, and when imported the active settings for those checks remain unmodified.
- The process for registering new SQL Server instances with IDERA SQL Secure now allows to define folders for file system permissions checks.
- IDERA SQL Secure now supports Sequence Objects for SQL Server 2012.
- IDERA SQL Secure supports users in contained databases for SQL Server 2012 and 2014.
- IDERA SQL Secure now provides the following new Security Checks:
 - Security Check for SQL Server Integration Services (SSIS) to verify if any public or other unauthorized principals have been granted permissions to use SSIS stored procedures.
 - Security Check added to level 1 and level 2 policy templates that shows risk on systems where permissions have been granted to the public role on objects outside the sys schema in user databases.
 - Security Check: *Unacceptable Database Ownership* detects if a database is found with an unacceptable owner
 - The Risk Assessment Report has been updated with new nine security checks.

2.8 Fixed issues

Phase out IDERA SQL Secure Itanium support

IDERA is beginning to phase out all Itanium support in IDERA SQL Secure 2.6 and all subsequent 2.x versions. While 2.8 will continue to operate with Itanium and support is available, IDERA SQL Secure 3.0 will not support the Itanium processor architecture. For more information, see the product requirements.

SQL Secure Repository requires SQL Server 2005 or later

When upgrading, migrating, or deploying the SQL Secure Repository for the first time, ensure you select an instance running SQL Server 2005 or later for your target location. SQL Secure no longer supports SQL Server 2000 platform for the SQL Secure Repository.

If you are upgrading from SQL Secure version 2.0 or earlier, you will need to migrate the Repository to a SQL Server 2005 or later instance. For more information, see IDERA Solution 00002617 ("How do I migrate SQL Secure from one server to another?").

Microsoft Reporting Services 2000 is no longer supported

If you are upgrading reports from Microsoft Reporting Services 2000, then upgrade to Microsoft Reporting Services 2005 before installing the new reports in SQL Secure 2.8 to ensure the upgrade is successful.

New credentials may be necessary when upgrading

SQL Secure no longer uses the default credentials of your SQL Server Agent to collect Operating System and SQL Server security information. If, in a previously installed version, SQL Secure was configured to use the default SQL Agent credentials to collect security information, a window will open when you first open SQL Secure 2.8, prompting you for new credentials.

Blank password not accepted when registering a SQL Server instance

When registering a new SQL Server instance, blank passwords are not accepted for SQL logins due to the extreme security risk this poses.

SQL Secure can now audit the same cluster node on which it is installed

The SQL Secure now allows you to audit security data from SQL Server instances hosted on the same cluster node that hosts the SQL Secure Collector.

Support for contained database authentication security

SQL Secure now displays information and report on the security settings of database principals used for contained database authentication and connections. Contained databases are a new security feature available in SQL Server 2012.

SQL Secure now collects security data for AlwaysOn Availability Groups

When you take snapshots of the SQL Server 2012 instances you audit, SQL Secure now collects properties or security data for the AlwaysOn Availability Groups feature. AlwaysOn can be enabled only on instances running SQL Server 2012 & 2014 Enterprise Edition.

2.7 New features

New policy templates for PCI and HIPAA

The SQL Secure [policy templates](#) now address security standards for the Payment Card Industry (PCI) and the Health Insurance Portability and Accountability Act (HIPAA), allowing you to immediately begin accessing your SQL Server environment against these regulations.

New weak password detection

SQL Secure now detects and analyses the [password health of SQL logins](#) on your audited SQL Server instances, reporting when passwords are blank or weak.

New security checks

SQL Secure now provides these additional security checks to help you further harden the security of your SQL Server instances:

- Weak Passwords
- Public Role Has Permissions on Database User Objects
- Integration Services Roles Have Dangerous Security Principals
- Integration Services Permissions Not Acceptable
- These security checks are enabled in the [IDERA Level 3 policy template](#).

New FIPS support

SQL Secure now supports auditing and assessing the security of SQL Server instances located in environments that require FIPS compliance.

New SQL Server 2012 support

SQL Secure now offers full support of SQL Server 2012 RTM.

2.7 Fixed issues

- When changing server connection credentials, SQL Secure now identifies other audited SQL Server instances that use the same account and then lets you change their connection credentials as well.
- SQL Secure now correctly processes local account information for SQL Server instances operating in clustered environments.
- Snapshots that have been marked as baselines are no longer deleted from the SQL Secure Repository database during grooming.
- The SQL Secure Collector now correctly gets file permissions for service executable files when the file name is specified in upper case.
- The SQL Secure Collector now correctly gets permissions data for system databases that are not located on the local drive of the target SQL Server instance.
- SQL Secure now successfully displays the Server Security Report Card and generates the Risk Assessment report when the audited SQL Server instance and the instance hosting the SQL Secure Repository have been assigned different collations.
- When scheduling monthly snapshots, SQL Secure now correctly applies the "3rd," "4th," and "Last" options for specific days of the month.

IDERA **SQL Secure** tells you who has access to what on your SQL Server databases. [Learn more >>](#)

IDERA Website	Products	Purchase	Support	Community	About Us	Resources	Legal
-------------------------------	--------------------------	--------------------------	-------------------------	---------------------------	--------------------------	---------------------------	-----------------------

Known issues

IDERA strives to ensure our products provide quality solutions for your SQL Server needs. ***If you need further assistance with any issue***, please contact Support (www.idera.com/support).

Known issues

- Clicking Technical Support Site on the IDERA SQL Secure Quick Start window redirects to an error page.
- Console only installations may display an incorrect message stating that the repository specified is not compatible with this version of the Console. Click **OK** to continue installation.
- During a new installation, the Ready to Install the Program window refers to an upgrade instead of an installation.
- Uninstalling IDERA SQL Secure does not remove the Secure folder from the registry.
- The License Agreement does not display the correct year of 2016.
- SMTP email configuration may not work for a secure mail server.

Previous known issues

Phase out SQL Secure Itanium support

IDERA is beginning to phase out all Itanium support in SQL Secure 2.6 and all subsequent 2.x versions. While 2.x will continue to operate with Itanium and support is available through November 2012, SQL Secure 3.0 will not support the Itanium processor architecture. For more information, see the product requirements.

SQL Secure Repository requires SQL Server 2005 or later

When upgrading, migrating, or deploying the SQL Secure Repository for the first time, ensure you select an instance running SQL Server 2005 or later for your target location. SQL Secure no longer supports SQL Server 2000 platform for the SQL Secure Repository.

If you are upgrading from SQL Secure version 2.0 or earlier, you will need to migrate the Repository to a SQL Server 2005 or later instance. For more information, see IDERA Solution 00002617 ("How do I migrate SQL Secure from one server to another?").

Microsoft Reporting Services 2000 is no longer supported

If you are upgrading reports from Microsoft Reporting Services 2000, then upgrade to Microsoft Reporting Services 2005 before installing the new reports in SQL Secure 2.6 to ensure the upgrade is successful.

New credentials may be necessary when upgrading

SQL Secure no longer uses the default credentials of your SQL Server Agent to collect Operating System and SQL Server security information. If, in a previously installed version, SQL Secure was configured to use the default SQL Agent credentials to collect security information, a window will open when you first open SQL Secure 2.6, prompting you for new credentials.

Blank password not accepted when registering a SQL Server instance

When registering a new SQL Server instance, blank passwords are not accepted for SQL logins due to the extreme security risk this poses.

SQL Secure cannot audit the same cluster node on which it is installed

The SQL Secure cannot audit security data from SQL Server instances hosted on the same cluster node that hosts the SQL Secure Collector. To successfully audit your virtual instances, deploy the SQL Secure Collector on an instance that does not belong to the clusters you want to audit.

Incomplete support for contained database authentication security

SQL Secure does not fully display information about nor report on the security settings of database principals used for contained database authentication and connections. To see how many database principals have been created on the audited instance, as well as which permissions have been assigned to these users, navigate to the Object Permissions Explorer and then view the user properties.

Contained databases are a new security feature available in SQL Server 2012.

SQL Secure does not collect security data for AlwaysOn Availability Groups

When you take snapshots of the SQL Server 2012 instances you audit, SQL Secure does not collect properties or security data for the AlwaysOn Availability Groups feature. AlwaysOn can be enabled only on instances running SQL Server 2012 Enterprise Edition.

With Grant and Grant permissions

When SQL Secure displays the With Grant permission as checked, it does not also check the Grant permission as is the case in SQL Server Enterprise Manager or SQL Server Management Studio.

Incorrect timeout error message

SQL Secure may display an incorrect timeout error message when processing policy information.

Incorrect security check message

SQL Secure displays an incorrect message that some servers are failing the Login Audit Level security check even with proper settings.

Possible freeze when creating reports

SQL Secure may freeze when creating User Permissions reports for over 80 databases.

Policy findings for snapshots taken in previous versions do not contain all necessary data

When you create a policy in SQL Secure 2.5 or later and view a snapshot taken in a previous version, the snapshot may not contain required data. If this issue occurs, the security check "Snapshot May Be Missing Data" will return a finding.

Assessment Comparison window may not refresh display

When comparing assessments using the SQL Secure Console, the Assessment Comparison window may not refresh its display when you choose a different set of assessments to compare. To avoid this issue, close the window, and then click Compare Assessments on the actions ribbon to perform the next comparison.

Collector job fails when the port used to access the Repository changes

The port number is included in the Collector Job when it is first configured. If the port number changes, the Collector Jobs will fail. To fix this issue, delete the Collector Jobs that are failing and recreate them.

Collector job fails to get registry information from 64-bit Server

The Collector Job will fail to retrieve registry settings from an audited server running a 64-bit version of the Windows operating system, such as Itanium or x64, when the SQL Secure Repository is located on a server running a 32-bit version of the Windows operating system. To collect registry settings from the target server, install the Repository on a server running Itanium or x64.

SQL Agent job issue

The SQL Agent jobs used by SQL Secure can fail when the owner is from a one-way trusted domain. SQL Secure requires that the sysadmin account used in SQL Secure must be the owner of all SQL Agent jobs created. This setting has no effect on what the job does beyond execution of the job. This setting is required to ensure that only system administrators can run SQL Secure jobs, and prevents any problems with the snapshot collection process.

SQL Secure Collector logging issue

If a SQL Secure job has an error and the Collector is not started, a SQL Secure log entry is not created. Although a SQL Secure log entry is not created, you can see the error in the Windows Application log.

Snapshot Comparison may not report correct permissions status

When you generate a Snapshot Comparison, the report may indicate that differences exist in the file, folder, or registry key permissions when, in fact, there are no differences. This issue is most likely to occur when Windows user accounts have been granted multiple permissions on those files, folders, or registry keys.

IDERA **SQL Secure** tells you who has access to what on your SQL Server databases. [Learn more >>](#)

IDERA Website	Products	Purchase	Support	Community	About Us	Resources	Legal
-------------------------------	--------------------------	--------------------------	-------------------------	---------------------------	--------------------------	---------------------------	-----------------------

Get started

Use the following checklist to guide you through the process of getting started with IDERA SQL Secure.

✓	Follow these steps ...
✓	Register the SQL Server instances whose security models you want to assess and audit.
✓	Configure snapshots to collect audit data from the registered instances.
✓	Find security issues using the default All Servers policy .
✓	Create custom policies to assess compliance to specific security regulations.
✓	Save assessments for policies you want to use in your audit process.
✓	Compare assessments to identify changes over time.
✓	Perform forensic analysis of your security model using the Permissions Explorer .
✓	Discover vulnerabilities using the built-in reports .

IDERA SQL Secure tells you who has access to what on your SQL Server databases. [Learn more >>](#)

IDERA Website	Products	Purchase	Support	Community	About Us	Resources	Legal
-------------------------------	--------------------------	--------------------------	-------------------------	---------------------------	--------------------------	---------------------------	-----------------------

Upgrade to this release

You can easily and quickly upgrade to the latest version of IDERA SQL Secure. Upgrading will not delete or alter any existing snapshots or policies. For more information about this release, see [what's new](#).

To upgrade to the latest version of IDERA SQL Secure:

1. Use an administrator account to log onto the computer on which you previously deployed IDERA SQL Secure.
2. Close all open applications.
3. Run `Setup.exe` in the root of the installation kit.
4. Follow the prompts, and then click **Finish** when done. The setup program automatically upgrades each IDERA SQL Secure component on the target computer.
5. **If you have previously deployed Reports**, use the [Deploy Reports wizard](#) to upgrade your deployment.
6. **If your existing policies include security checks that cite OS and SQL Server versions**, you must manually update the related security checks to include the latest releases, such as SQL Server 2016.

IDERA **SQL Secure** tells you who has access to what on your SQL Server databases. [Learn more >>](#)

IDERA Website	Products	Purchase	Support	Community	About Us	Resources	Legal
-------------------------------	--------------------------	--------------------------	-------------------------	---------------------------	--------------------------	---------------------------	-----------------------

Welcome to IDERA SQL Secure

IDERA SQL Secure identifies security holes and verifies your SQL Server security model by analyzing the effective rights for any user, on any given object or access control, across SQL Server and Active Directory.

Need help using IDERA SQL Secure? See the following sections:

- [Get started](#)
- [Assess Your Security Model](#)
- [Explore Security Settings](#)
- [Report on SQL Server Security](#)

IDERA **SQL Secure** tells you who has access to what on your SQL Server databases. [Learn more > >](#)

IDERA Website	Products	Purchase	Support	Community	About Us	Resources	Legal
-------------------------------	--------------------------	--------------------------	-------------------------	---------------------------	--------------------------	---------------------------	-----------------------

What is IDERA SQL Secure?

IDERA SQL Secure is a security analysis solution that identifies SQL Server security violations and ensures security policies are enforced. Find out who has access to what and identify each user's effective rights across all SQL Server objects. Alert on violations of your corporate policies, monitor changes made to security settings, and provide security audit reports as well as recommendations on how to improve your security model.

SQL Secure tells you who has access to what on your SQL Server databases. [Learn more > >](#)

IDERA Website	Products	Purchase	Support	Community	About Us	Resources	Legal
-------------------------------	--------------------------	--------------------------	-------------------------	---------------------------	--------------------------	---------------------------	-----------------------

How SQL Secure helps

Because of the many different and complex ways to grant access to SQL Server databases – including server and database roles, Active Directory and local groups, inherited permissions, explicit grants and denies, just to name a few – it is virtually impossible to manually analyze a security model across instances or determine a user's rights on specific database objects. IDERA SQL Secure does this for you, answering the important question "Who can do what, where, and how on my SQL Servers?" SQL Secure provides a comprehensive, automated solution for analyzing, monitoring, and reporting on security access rights in SQL Server databases.

With IDERA SQL Secure, you can:

- Identify vulnerabilities and harden security across your SQL Servers
- Diagnose and protect against violations of your security policies and security best practices
- Analyze and manage user permissions across all SQL Server objects with our powerful security model analysis
- Create policies using customizable templates for various security level needs

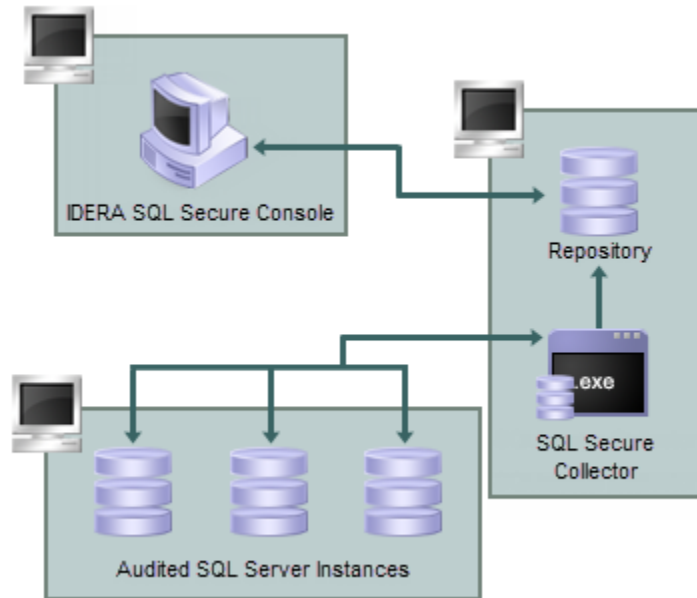
SQL Secure tells you who has access to what on your SQL Server databases. [Learn more >>](#)

IDERA Website	Products	Purchase	Support	Community	About Us	Resources	Legal
-------------------------------	--------------------------	--------------------------	-------------------------	---------------------------	--------------------------	---------------------------	-----------------------

How SQL Secure works

IDERA SQL Secure uses a Collector to gather permissions information at scheduled intervals. SQL Secure runs this executable using a SQL Server job. The Collector stores each data set as an audit snapshot in a SQL Secure Repository database. The SQL Secure Console connects to the Repository to view your permissions data.

The following diagram displays the IDERA SQL Secure workflow.



SQL Secure tells you who has access to what on your SQL Server databases. [Learn more >>](#)

IDERA Website	Products	Purchase	Support	Community	About Us	Resources	Legal
-------------------------------	--------------------------	--------------------------	-------------------------	---------------------------	--------------------------	---------------------------	-----------------------

Find answers

This documentation set includes a comprehensive online Help system as well as additional resources that support you as you install and use the product. You can also search the Idera Solutions knowledge base, available at the Idera Customer Service Portal (www.idera.com/support/).

SQL Secure tells you who has access to what on your SQL Server databases. [Learn more > >](#)

IDERA Website	Products	Purchase	Support	Community	About Us	Resources	Legal
-------------------------------	--------------------------	--------------------------	-------------------------	---------------------------	--------------------------	---------------------------	-----------------------

Document conventions

IDERA documentation uses consistent conventions to help you identify items throughout the printed online library.

Convention	Specifying
Bold	Window items
<i>Italics</i>	Book and CD titles Variable names New terms
Fixed Font	File and directory names Commands and code examples Text typed by you
Straight brackets, as in [value]	Optional command parameters
Curly braces, as in {value}	Required command parameters
Logical OR, as in value 1 value 2	Exclusively command parameters where only one of the options can be specified

SQL Secure tells you who has access to what on your SQL Server databases. [Learn more](#) > >

IDERA Website	Products	Purchase	Support	Community	About Us	Resources	Legal
--------------------------	-----------------	-----------------	----------------	------------------	-----------------	------------------	--------------

How to use this Help system

The IDERA wiki includes a comprehensive online Help system as well as additional resources that support you as you install and use IDERA products. You can also search multiple IDERA support solutions, available at www.idera.com/support/faq

Additionally, IDERA helps you by providing:

- 24/7 technical support for critical issues.
- Availability to report cases and access a web-based customer portal for update status.
- Access to our [Resource Center](#) where you can find FAQs, How To's, Best Practices, and Webcasts.

This wiki includes the following Web browser minimum requirements:

- Internet Explorer 9.0
- Mozilla Firefox 4
- Google Chrome 6

You can access the IDERA SQL Secure Help system through the **Help** icon on the top right section of your window or by pressing F1 on the section where you need more information.

You can print a help topic from the wiki using the Print function in your browser.

[SQL Secure](#) tells you who has access to what on your SQL Server databases. [Learn more > >](#)

IDERA Website	Products	Purchase	Support	Community	About Us	Resources	Legal
-------------------------------	--------------------------	--------------------------	-------------------------	---------------------------	--------------------------	---------------------------	-----------------------

Definition of terms

Computer

Refers to the server that hosts a SQL Server, this maybe a physical or virtual server.

Database

A database is a data structure that stores organized information. Most databases contain multiple tables, which may each include several different fields. For example, a company database may include tables for products, employees, and financial records. Each of these tables would have different fields that are relevant to the information stored in the table.

Instance

Also known as SQL Server or SQL server instance. SQL Server supports multiple “instances” or installations on the same host computer. Each instance runs independently from all others and has its own set of installation code, configuration parameters, system and user databases, memory allocation, and security configuration.

SQL Secure tells you who has access to what on your SQL Server databases. [Learn more > >](#)

IDERA Website	Products	Purchase	Support	Community	About Us	Resources	Legal
-------------------------------	--------------------------	--------------------------	-------------------------	---------------------------	--------------------------	---------------------------	-----------------------

About IDERA

IDERA is a leading provider of application and server management solutions. We have a wide variety of performance management products for Microsoft SQL Server, and award-winning server backup solutions for both managed service providers and enterprise customers. Idera products install in minutes and start solving server problems immediately, giving administrators more time, reduced overhead and expenses, and increased server performance and reliability. We are a Microsoft Gold Certified partner, headquartered in Houston, Texas, with offices in Asia Pacific, Australia, New Zealand, Europe, Africa, and Latin America. So we're everywhere your IT needs are.

SQL Secure tells you who has access to what on your SQL Server databases. [Learn more > >](#)

IDERA Website	Products	Purchase	Support	Community	About Us	Resources	Legal
-------------------------------	--------------------------	--------------------------	-------------------------	---------------------------	--------------------------	---------------------------	-----------------------

Contact IDERA

Please contact IDERA with your questions and comments. We look forward to hearing from you. For support around the world, please contact us or your local partner.

For a complete list of our partners, please visit our IDERA website.

Sales	713.523.4433 1.877.GO.IDERA (464.3372) (only in the United States and Canada)
Sales Email	sales@idera.com
Support	713.523.4433 1.877.GO.IDERA (464.3372) (only in the United States and Canada) www.idera.com/support
Website	www.idera.com

SQL Secure tells you who has access to what on your SQL Server databases. [Learn more > >](#)

IDERA Website	Products	Purchase	Support	Community	About Us	Resources	Legal
--------------------------	-----------------	-----------------	----------------	------------------	-----------------	------------------	--------------

IDERA products

Our tools are engineered to scale from managing a single server to enterprise deployments with thousands of servers. IDERA products combine ease of use with a design that installs in minutes, configures in hours, and deploys worldwide in days. To learn more about IDERA products, visit the IDERA Web site at www.idera.com.

SQL Secure tells you who has access to what on your SQL Server databases. [Learn more > >](#)

IDERA Website	Products	Purchase	Support	Community	About Us	Resources	Legal
-------------------------------	--------------------------	--------------------------	-------------------------	---------------------------	--------------------------	---------------------------	-----------------------

Legal notice

IDERA, Inc. ("IDERA") makes information and products available on this web site, subject to the following terms and conditions. By accessing this web site, you agree to these terms and conditions. IDERA reserves the right to change these terms and conditions, and the products, services, prices, and programs mentioned in this web site at any time, at its sole discretion, without notice. IDERA reserves the right to seek all remedies available by law and in equity for any violation of these terms and conditions. THIS WEB SITE MAY INCLUDE TECHNICAL OR OTHER INACCURACIES. CHANGES ARE PERIODICALLY MADE TO THE INFORMATION HEREIN. HOWEVER, IDERA MAKES NO COMMITMENT TO UPDATE MATERIALS ON THIS WEB SITE.

Trademark

Azure SQL Database Backup, Hyper-V VHD Explorer, Linux Hot Copy, PowerShellPlus, PowerShell Scripts for SQL Server, SQL Admin Toolset, SQL Backup Status Reporter, SQL Boost, SQL Check, SQL Comparison Toolset, SQL Compliance Manager, SQLcompliance, SQL CM, SQL Defrag Manager, SQL Diagnostic Manager, SQL DM, SQL Doctor, SQL Elements, SQL Fragmentation Analyzer, SQL Integrity Check, SQL Inventory Manager, SQL Job Manager, SQL Mobile Manager, SQL Permissions Extractor, SQL Safe Backup, SQL Secure, SQLtool, SQL Toolbox, SQL Traffic Accelerator, SQL Virtual Database, SQL VDB, SQL XEvent Profiler, virtual database, IDERA, BBS Technologies and the IDERA logo are trademarks or registered trademarks of Idera, Inc., or its subsidiaries in the United States and other jurisdictions. All other company and product names may be trademarks or registered trademarks of their respective companies. Elements of this web site are protected by trade dress or other laws and may not be imitated or reproduced in whole or in part.

Copyright

The information on this web site is protected by copyright. Except as specifically permitted, no portion of this web site may be distributed or reproduced by any means, or in any form, without IDERA's prior written consent.

Use of the Software

The software and accompanying documentation available to download from this web site are the copyrighted work of IDERA. Use of the software is governed by the terms of the License Agreement, which accompanies such software. If no license accompanies the download, the terms of the license, which accompanied the original product being updated, will govern. You will not be able to use, download, or install any software unless you agree to the terms of such License Agreement.

Use of web site information

Except as otherwise indicated on this web site, you may view, print, copy, and distribute documents on this web site subject to the following terms and conditions:

1. The document may be used solely for informational, personal, non-commercial purposes;
2. Any copy of the document or portion thereof must include all copyright and proprietary notices in the same form and manner as on the original;
3. The document may not be modified in any way; and
4. IDERA reserves the right to revoke such authorization at any time, and any such use shall be discontinued immediately upon notice from IDERA.

Documents specified above do not include logos, graphics, sounds or images on this web site or layout or design of this web site, which may be reproduced or distributed only when expressly permitted by IDERA.

Warranties and Disclaimers; Liability Limitations

EXCEPT AS EXPRESSLY PROVIDED OTHERWISE IN A WRITTEN AGREEMENT BETWEEN YOU AND IDERA, ALL INFORMATION AND SOFTWARE ON THIS WEB SITE ARE PROVIDED "AS IS" WITHOUT WARRANTY OR CONDITIONS OF ANY KIND, EITHER EXPRESS OR IMPLIED, INCLUDING, BUT NOT LIMITED TO, THE IMPLIED WARRANTIES OR CONDITIONS OF MERCHANTABILITY, FITNESS FOR A PARTICULAR PURPOSE, OR NON-INFRINGEMENT.

IDERA ASSUMES NO RESPONSIBILITY FOR ERRORS OR OMISSIONS IN THE INFORMATION OR SOFTWARE OR OTHER DOCUMENTS WHICH ARE REFERENCED BY OR LINKED TO THIS WEB SITE.

IN NO EVENT SHALL IDERA BE LIABLE FOR ANY SPECIAL, INCIDENTAL, INDIRECT OR CONSEQUENTIAL DAMAGES OF ANY KIND, OR ANY DAMAGES WHATSOEVER (INCLUDING WITHOUT LIMITATION, THOSE RESULTING FROM: (1) RELIANCE ON THE MATERIALS PRESENTED, (2) COSTS OF REPLACEMENT GOODS, (3) LOSS OF USE, DATA OR PROFITS, (4) DELAYS OR BUSINESS INTERRUPTIONS, (5) AND ANY THEORY OF LIABILITY, ARISING OUT OF OR IN CONNECTION WITH THE USE OR PERFORMANCE OF INFORMATION) WHETHER OR NOT IDERA HAS BEEN ADVISED OF THE POSSIBILITY OF SUCH DAMAGES. SOME STATES DO NOT ALLOW THE LIMITATION OR EXCLUSION OF LIABILITY FOR INCIDENTAL OR CONSEQUENTIAL DAMAGES SO THE ABOVE LIMITATIONS OR EXCLUSIONS MAY NOT APPLY TO YOU.

Submissions

With the exception of credit card numbers for the purchase of products and services, IDERA does not want to receive confidential or proprietary information through its web site.

Any information sent to IDERA, with the exception of credit card numbers, will be deemed NOT CONFIDENTIAL. You grant IDERA an unrestricted, irrevocable license to display, use, modify, perform, reproduce, transmit, and distribute any information you send IDERA, for any and all commercial and non-commercial purposes.

You also agree that IDERA is free to use any ideas, concepts, or techniques that you send IDERA for any purpose, including, but not limited to,

developing, manufacturing, and marketing products that incorporate such ideas, concepts, or techniques.

IDERA may, but is not obligated to, review or monitor areas on its web site where users may transmit or post communications, including bulletin boards, chat rooms, and user forums. IDERA is not responsible for the accuracy of any information, data, opinions, advice, or statements transmitted or posted on bulletin boards, chat rooms, and user forums.

You are prohibited from posting or transmitting to or from this web site any libelous, obscene, defamatory, pornographic, or other materials that would violate any laws. However, if such communications do occur, IDERA will have no liability related to the content of any such communications.

Some companies, names, and data in this document are used for illustration purposes and may not represent real companies, individuals, or data.

Governing Law and Jurisdiction

You agree that all matters relating to your access to, or use of, this web site and these terms and conditions shall be governed by the laws of the state of Texas. You agree and hereby irrevocably submit to the exclusive personal jurisdiction and venue of the state courts of Texas located in Harris County, Texas, and the United States District Court for the Southern District of Texas, with respect to such matters.

IDERA makes no representation that information on this web site are appropriate or available for use in all countries, and prohibits accessing materials from territories where contents are illegal. Those who access this site do so on their own initiative and are responsible for compliance with all applicable laws.

Export Control Laws

Certain IDERA products, including software, documentation, services, and related technical data, available on the IDERA and other web sites are subject to export controls administered by the United States (including, but not limited to, the U.S. Department of Commerce Export Administration Regulations ("EAR")) and other countries including, controls for re-export under European Union, the Singapore Strategic Goods Control Act, and the import regulations of other countries. Diversion contrary to U.S. or other applicable law of any IDERA product or service is prohibited. Export, re-export or import of products and services may require action on your behalf prior to purchase and it is your responsibility to comply with all applicable international, national, state, regional and local laws, and regulations, including any import and use restrictions. IDERA products and services are currently prohibited for export or re-export to Cuba, Iran, North Korea, Sudan, Syria, or to any country then subject to U.S. trade sanctions. IDERA products and services are prohibited for export or re-export to any person or entity named on the U.S. Department of Commerce Denied Persons, Entities and Unverified Lists, the U.S. Department of State's Debarred List, or the U.S. Department of Treasury's lists of Specially Designated Nationals, Specially Designated Narcotics Traffickers, or Specially Designated Terrorists. IDERA products and services are prohibited from use with chemical or biological weapons, sensitive nuclear end-users, or missiles, drones or space launch vehicles capable of delivering such weapons. By downloading or using any product from this web site, or purchasing any service, you are acknowledging that you have read and understood this notice and agree to comply with all applicable export control laws. You are also representing that you are not under the control of, located in, or a resident or national of any prohibited country, and are not a prohibited person or entity. This notice is not intended to be a comprehensive summary of the export laws that govern the products and services. It is your responsibility to consult with a legal adviser to ensure compliance with applicable laws.

United States Government Rights

All IDERA products and publications are commercial in nature. The software, publications, and software documentation available on this web site are "Commercial Items", as that term is defined in 48 C.F.R. §2.101, consisting of "Commercial Computer Software" and "Commercial Computer Software Documentation", as such terms are defined in 48 C.F.R. §252.227-7014(a)(5) and 48 C.F.R. §252.227-7014(a)(1), and used in 48 C.F.R. §12.212 and 48 C.F.R. §227.7202, as applicable. Pursuant to 48 C.F.R. §12.212, 48 C.F.R. §252.227-7015, 48 C.F.R. §227.7202 through 227.7202-4, 48 C.F.R. §52.227-19, and other relevant sections of the Code of Federal Regulations, as applicable, IDERA's publications, commercial computer software, and commercial computer software documentation are distributed and licensed to United States Government end users with only those rights as granted to all other end users, according to the terms and conditions contained in the license agreements that accompany the products and software documentation, and the terms and conditions herein.

© 2003-2016 IDERA, Inc., all rights reserved.

SQL Secure tells you who has access to what on your SQL Server databases. [Learn more > >](#)

IDERA Website	Products	Purchase	Support	Community	About Us	Resources	Legal
----------------------	-----------------	-----------------	----------------	------------------	-----------------	------------------	--------------

Installation and deployment

You can install and deploy IDERA SQL Secure in any sized environment.

- Learn about the [product components and architecture](#)
- Review the [product requirements](#)
- View trial [installation instructions](#)

SQL Secure tells you who has access to what on your SQL Server databases. [Learn more > >](#)

IDERA Website	Products	Purchase	Support	Community	About Us	Resources	Legal
-------------------------------	--------------------------	--------------------------	-------------------------	---------------------------	--------------------------	---------------------------	-----------------------

Product components and architecture

IDERA SQL Secure provides a robust, easy-to-use SQL Server audit and reporting solution. Behind a friendly user interface, SQL Secure offers a unique architecture that is both flexible and extremely powerful. SQL Secure fits your environment, no matter how simple or complex.

Product components

SQL Secure Console

The SQL Secure Console component is the interface you use to set up and manage your SQL Secure configuration, view and search your audit snapshots for user and object permissions, and generate reports to display the audit information that is most important to you.

SQL Secure Repository

The SQL Secure Repository is where your audit snapshot information and SQL Secure configuration information is stored. You can schedule routine grooming that automatically delete snapshots older than a specified date.

SQL Secure Collector

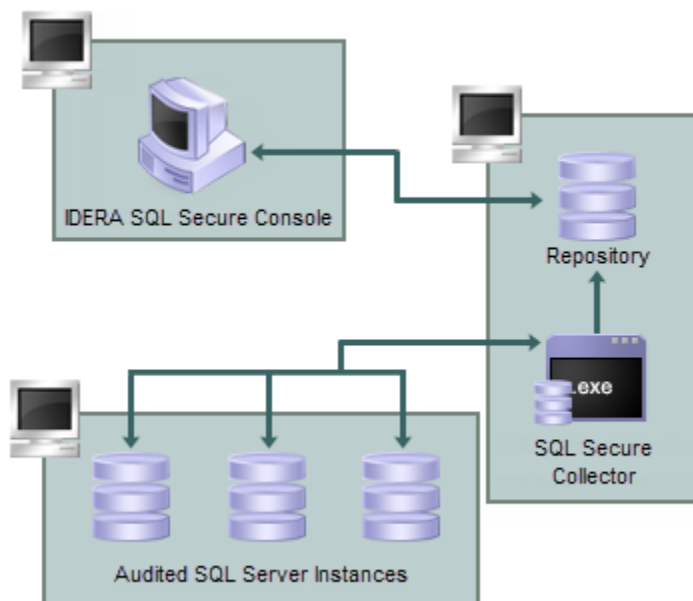
The SQL Secure Collector gathers SQL Server permission information from your audited SQL Server instances (using your filter criteria) and stores the information in the SQL Secure Repository database.

Audited SQL Server Instances

The audited SQL Server instances are SQL Server instances that have been registered with SQL Secure. These SQL Server instances are audited periodically at the dates and times you schedule. The resulting data is stored in the SQL Secure Repository and displayed in the SQL Secure Console as a snapshot of your SQL Server security model.

Product architecture

The following diagram illustrates the components of the SQL Secure architecture.



SQL Secure tells you who has access to what on your SQL Server databases. [Learn more >>](#)

IDERA Website	Products	Purchase	Support	Community	About Us	Resources	Legal
-------------------------------	--------------------------	--------------------------	-------------------------	---------------------------	--------------------------	---------------------------	-----------------------

Product requirements

You can easily and quickly install IDERA SQL Secure on any computer that meets or exceeds the following hardware, software, and permission requirements. Before installing SQL Secure, also review the [product components and architecture](#) as well as [how the product works](#).

Typical requirements

A typical install sets up all SQL Secure components on the same computer. The following table lists the requirements for a typical installation.

Hardware/software	Requirement
CPU	2.0 GHz or higher
Memory	2 GB
32-bit or 64-bit Operating System	<ul style="list-style-type: none"> Windows 2000 Server SP4 or later Windows Server 2003 SP2 or later Windows XP SP2 or later Windows Vista Business and Enterprise Windows 7 Windows Server 2008 Windows Server 2008 R2 <p>Plus:</p> <ul style="list-style-type: none"> .NET Framework 2.0 SP1 or later MDAC 2.8 or later
Microsoft SQL Server for Repository	<ul style="list-style-type: none"> SQL Server 2005 SP1 or later SQL Server 2008 SQL Server 2008 R2 SQL Server 2012 SQL Server 2014 SQL Server 2016
Microsoft SQL Server for audited instances	<ul style="list-style-type: none"> SQL Server 2000 SQL Server 2005 SQL Server 2008 SQL Server 2008 R2 SQL Server 2012 SQL Server 2014 SQL Server 2016
Browser for online Help	Internet Explorer 9.0 or later

Console requirements

A console-only installation installs the SQL Secure Console. The console-only installation assumes that a full installation has already been completed on another machine. The following table lists all the requirements for a console-only installation.

Hardware/software	Requirement
CPU	2.0 GHz or higher
Memory	2 GB
32-bit or 64-bit Operating System	<ul style="list-style-type: none"> Windows 2000 Server SP4 or later Windows Server 2003 SP2 or later Windows XP SP2 or later Windows Vista Business and Enterprise Windows 7 Windows Server 2008 Windows Server 2008 R2 <p>Plus:</p> <ul style="list-style-type: none"> .NET Framework 2.0 SP1 or later MDAC 2.8 or later
Browser for online Help	Internet Explorer 9.0 or later

Collector permission requirements

The following requirements are necessary for the SQL Secure Collector to access the SQL Server instances you want to audit. During install, you can input credentials for a Windows user account or SQL Server login.

Type	Requirement
Windows permissions	A Windows user account that has local administrator permissions.
SQL Server privileges	A Windows user account that is a member of the sysadmin fixed server role on the SQL Server instance.

Port requirements

SQL Secure uses the default ports opened by the Windows operating system for local and remote communications. To learn about Windows port assignments, see [Article 832017](#) on the Microsoft Support site. To better understand how port assignments work when Windows Firewall has been configured, see "[Connecting through Windows Firewall](#)" on the MSDN site.

SQL Secure tells you who has access to what on your SQL Server databases. [Learn more > >](#)

IDERA Website	Products	Purchase	Support	Community	About Us	Resources	Legal
--------------------------	-----------------	-----------------	----------------	------------------	-----------------	------------------	--------------

Ensure FIPS compliance

You can use IDERA SQL Secure to audit and assess your SQL Server security in environments where Federal Information Processing Standard (FIPS) compliance is required.

For more information about FIPS compliance, see the corresponding [Microsoft TechNet Web article](https://technet.microsoft.com) (technet.microsoft.com) and [Microsoft Knowledge Base Article #811833](http://support.microsoft.com/kb/811833) (http://support.microsoft.com/kb/811833).

Verifying whether your environment requires FIPS compliance

Ask your Windows security administrator whether the FIPS system cryptography setting has been enabled in the Local Security Policy or a Group Policy that applies to the SQL Server computer.

SQL Secure tells you who has access to what on your SQL Server databases. [Learn more > >](#)

IDERA Website	Products	Purchase	Support	Community	About Us	Resources	Legal
-------------------------------	--------------------------	--------------------------	-------------------------	---------------------------	--------------------------	---------------------------	-----------------------

How to install IDERA SQL Secure

This procedure guides you through a typical install of IDERA SQL Secure. A typical install sets up all SQL Secure components on the same computer. Use this procedure for first-time installs and evaluation installs.

Before you begin the installation process, ensure you review the [product requirements](#).

Start the setup program

You can install SQL Secure on any computer that meets or exceeds the product requirements.

To start installing SQL Secure:

1. Log on with an administrator account to the computer on which you want to install SQL Secure.
2. Close all open applications.
3. Run `Setup.exe` in the root of the installation kit.
4. Click **All Components** on the **Idera SQL Secure Quick Start** window, and then click **Run** to start the installation.
5. On the Welcome window of the setup program, click **Next**.
6. Review and accept the license agreement by clicking **I accept the terms in the license agreement**, and then click **Next**.

Choose where you want to install SQL Secure and who should use the product on this computer

You can use the default install location or specify a different location. For your first install, we recommend using the default location.

To choose a different location:

- Click **Change** to navigate to the location you want to use, and then click **Next**.

To restrict access:

1. Choose whether you want any user (Anyone who uses this computer) or only the current user (Only for me) to access this application,
2. Click **Next**.

Choose the type of install you want to perform

Typical

For your first install, we recommend using the **Typical** setup type. This type ensures you install and configure all required SQL Secure components, so you can immediately begin using SQL Secure in your environment.

To perform a typical install, click **Typical**, and then click **Next**.

Console Only

Alternatively, you can choose to install the **Console only**

To install only the SQL Secure Console, select this option, and then click **Next**.

Choose which SQL Server instance you want to host the Repository database

Select the local SQL Server instance where the SQL Secure repository will be installed.

To choose the instance where the repository will be installed:

1. Click **Browse** to access a new window where a list of all available instances, in your current domain and other trusted domains will be displayed. Select the SQL Server instance you want to use.
2. Click **OK**.



If you do not see your SQL Server instance in the list, enter the host name and instance in the space provided.

If you want to install on a Failover Cluster, click **Cluster installation**.

To specify the Connection Credentials:

By default, SQL Secure will connect to the selected SQL Server instance using the credentials of your current Windows logon account. For your first install, we recommend using your current logon account credentials.

To use a SQL Server login:

1. Click **Use Microsoft SQL Server authentication**. A new window for specifying the login credentials opens.
2. Specify the credentials of the login with sysadmin privileges on that instance, and then click **OK**.
3. Click **Next**.

Complete the install

Indicate that you are ready to complete your install and apply the configurations you specified. If you want to make changes or review your installation settings, click **Back**.

To complete your install:

1. Click **Install**.
2. Click **Finish**.

After the installation is complete, you can start the Management Console to immediately begin experiencing the benefits SQL Secure provides.

SQL Secure tells you who has access to what on your SQL Server databases. [Learn more > >](#)

IDERA Website	Products	Purchase	Support	Community	About Us	Resources	Legal
-------------------------------	--------------------------	--------------------------	-------------------------	---------------------------	--------------------------	---------------------------	-----------------------

Configure your deployment

After your initial installation and set up of IDERA SQL Secure, you may want to perform the following tasks to further customize and streamline your deployment.

- [Connect to your SQL Secure Repository](#)
- [Set up weak password detection to audit password health](#)
- [Use filters to specify which data is collected](#)
- [Use snapshots to collect audit data](#)
- [Register your SQL Server instances](#)


SQL Secure tells you who has access to what on your SQL Server databases. [Learn more > >](#)

IDERA Website	Products	Purchase	Support	Community	About Us	Resources	Legal
-------------------------------	--------------------------	--------------------------	-------------------------	---------------------------	--------------------------	---------------------------	-----------------------

Connect to the IDERA SQL Secure Repository

By default, IDERA SQL Secure connects to the Repository when you start the Console. You may need to reconnect to the Repository database under these circumstances:

- You installed multiple Repository databases
- You moved the Repository database to another SQL Server instance
- You lost connection to the SQL Server instance hosting the Repository and must reconnect

To connect to the Repository, go to **File**, in the menu options, and select **Connect to Repository**. A new window opens where you can enter the name of the SQL Server that hosts the Repository or access the list of available SQL Servers by clicking the ellipsis button .

After you specify the SQL Server, click **Connect**.

SQL Secure tells you who has access to what on your SQL Server databases. [Learn more >>](#)

IDERA Website	Products	Purchase	Support	Community	About Us	Resources	Legal
-------------------------------	--------------------------	--------------------------	-------------------------	---------------------------	--------------------------	---------------------------	-----------------------

How does Weak Password detection help you?

The **Weak Password Detection** option lets you set up how IDERA SQL Secure enforces password health. When setting up this option, take the following points into account:

- Users should not use blank passwords, passwords with common words, or passwords that match a login name.
- The SQL Logins of your audited SQL Server instances will be checked against a list of known words used in weak passwords.
- SQL Secure allows you to specify a custom list that includes words and phrases you have restricted in order to ensure passwords meet corporate security policies.
- Password detection is enabled by default for all SQL Server instances registered with SQL Secure.




SQL Secure determines the password health for all SQL logins but not for Windows user accounts or groups who have privileges on the audited SQL Server instance.

Weak password detection

The password analysis is performed during snapshot collection. When a snapshot is taken, the passwords of all SQL logins on the target SQL Server instances are collected and then compared against the default weak password list as well as any custom lists you defined. Each password is also compared against the name of its login.

The result (a security check finding) is stored in the Repository database but the passwords themselves are not stored.

To configure your Weak Password Detection settings:

1. In the menu options, click **Tools > Configure Weak Password Detection**.
2. Select **Enable weak password detection**. SQL Secure uses a default list with over 2400+ words. In the **Detection Settings** you can:
 - Add new words to the default list by typing the additional words or phrases separated by a semicolon in the Additional Passwords textbox. If you want to access the Default Passwords list, click **View Default Password List**.
 - Customize the password analysis by importing a custom list. For this purpose, type the name of the list file (text file *.txt) or click the ellipsis button  to browse a file in your computer. Format the text file such that each word or phrase is located on a separate line. If you want to view the imported list, click **View Custom Password List**. To specify a different text file, click **Remove List**, and then add the new file.
3. Click **OK**.



Determine which policy assessments should analyze password health. For each assessment, review its settings to ensure the **Weak Passwords** security check is enabled.

Test your configuration by [taking a snapshot](#) and then [reviewing the security check findings](#) for your target servers.

About the Default Weak Passwords list

The Default Weak Passwords list was compiled by industry experts. This list includes over 2,400 common words and phrases used in passwords that are considered weak (easy to guess or hack), including blank passwords. By default, SQL Secure uses this list to analyze your enterprise's password health, comparing each SQL login password to the list, then reporting the result as a security check finding.

You can add specific words and phrases to the default list, such as popular Internet memes like "kitteh" and "double rainbow." You can also add a custom list, such as words restricted by your corporate password policy.

Security Checks that enforce password health

To audit and enforce password health, enable the **Weak Passwords** security check in your assessment policies. This security check is enabled by default in the Idera Level 2 and Level 3 [policy templates](#).

Detected types of password health

As SQL Secure analyzes the password health of your SQL logins, it records one of the following results. These findings are displayed in the corresponding [Login Properties window](#) and the [Login Vulnerability report](#).

Password health results	What it means
Blank	The password for this login is either blank or null, which means no password is required for authentication or successful connection to databases hosted by your audited SQL Server instances.
Matches login name	The password for this login matches the name of the login.

N/A	The password for this login was not checked, most likely because either the login is a Windows user account or weak password detection is disabled.
OK	This login most likely has a strong password because the password does not match any of the words and phrases in the Default Weak Passwords list or the additional and custom passwords you specified.
Weak	The password for this login matches one or more of the words and phrases in the Default Weak Passwords list or the additional and custom passwords you specified.

About password detection

When weak password detection is disabled, SQL Secure stops collecting password health data. All previously collected data remains stored in the SQL Secure Repository database and can be evaluated using your policy assessments. For future assessments, SQL Secure will no longer report on whether any SQL login passwords are considered weak but it will continue to report on whether a password is blank.

If the **Weak Passwords** security check is enabled for a policy assessment and the snapshot you selected does not include password health data, the **Snapshot May Be Missing Data** security check will warn you that weak password detection has been disabled and password health data is not available to analyze.



To stop reporting on password health, disable the **Weak Passwords** security check in your policy assessments.

SQL Secure tells you who has access to what on your SQL Server databases. [Learn more >>](#)

IDERA Website	Products	Purchase	Support	Community	About Us	Resources	Legal
-------------------------------	--------------------------	--------------------------	-------------------------	---------------------------	--------------------------	---------------------------	-----------------------

Add server to begin auditing

Before auditing with IDERA SQL Secure, you need to register those SQL Server instances you want to monitor. You can register servers using the **Register a SQL Server** wizard or by importing a file containing details of your SQL Server instances in .CSV format. The wizard is recommended if you have only a few instances while the import option is best for larger environments. For more information about importing your SQL Server instances, see .



Take into account that you have to complete the **Register a SQL Server** wizard for every SQL Server instance you want to monitor before it can be audited by SQL Secure.

In the **Register a SQL Server** wizard, you will be able to specify the SQL Server location, credentials to use for auditing, object filter criteria, the schedule of your audits, and email notifications configuration. Once you have set up your SQL Server instance for auditing, SQL Secure will apply your settings and display the registered instance in the Security Summary and Explore Permissions tree panes. These configuration settings are stored in the Repository.

Access the Register a SQL Server wizard

You can open this wizard from the following locations:

- **File** menu - **Register a SQL Server** option
- **Security Summary** view - **Register a SQL Server** option in the ribbon menu options from the **Summary**, **Settings**, or **Users** tabs.

Register a SQL Server using the Register a SQL Server wizard

SQL Server instances must first be added to SQL Secure before the auditing process can begin. The Register a SQL Server wizard guides you through several sections that allow you to specify the required settings for SQL Secure to audit your server. In this wizard you can:

- Select the SQL Server instance you want to audit with SQL Secure
- Specify the credentials used to connect to your SQL Server instance and collect data
- Select which objects you want SQL Secure to audit in your instance
- Schedule collection times for snapshots
- Configure your email notifications
- Add the server to existing policies
- Choose if you want to take a snapshot after registration
- Review all configured settings in the wizard


SQL Secure tells you who has access to what on your SQL Server databases. [Learn more >>](#)

IDERA Website	Products	Purchase	Support	Community	About Us	Resources	Legal
--------------------------	-----------------	-----------------	----------------	------------------	-----------------	------------------	--------------

Select a SQL Server

In the **Select a SQL Server** section of the **Register a SQL Server** wizard, specify the SQL Server instance you want to add to IDERA SQL Secure for auditing.

To specify an instance:

1. Type the name of the instance you would like to audit.
2. Click the ellipsis button  to access a list of monitored SQL Servers in your domain, browse to locate your respective instance, then click **OK** to add it.
3. Click **Next** to go to the following section and [Specify your connection credentials](#).



You can add as many instances as your SQL Secure license provides. For more information, see [Managing Your SQL Secure Licenses](#).

SQL Secure tells you who has access to what on your SQL Server databases. [Learn more >>](#)

IDERA Website	Products	Purchase	Support	Community	About Us	Resources	Legal
-------------------------------	--------------------------	--------------------------	-------------------------	---------------------------	--------------------------	---------------------------	-----------------------

Specify connection credentials

The **Specify Connection Credentials** section of this wizard allows you to designate the credentials that IDERA SQL Secure will use to access the SQL Server instance you are adding. You can specify either SQL Server login or Windows account credentials.

In this section you have to specify the following credentials:

Item	Description
SQL Server credentials to connect to audited SQL Server	<p>Choose one of the following options:</p> <ul style="list-style-type: none"> • Select Windows Authentication and enter the credentials in the fields provided. • Click SQL Server Authentication to use the default credentials of your SQL Server Agent.
Windows Credentials to gather Operating System and Active Directory objects - These credentials are used to connect to the target server to gather Active Directory objects, file, and registry key permissions.	<p>Select one of the following options:</p> <ul style="list-style-type: none"> • Check the Use same Windows Authentication as above box to use the windows credentials specified above. • Specify a different Windows account that SQL Secure will use to use to gather information about OS and AD objects.



Case Sensitive accounts

Take into account that if the login configuration for the SQL Server you want to audit is case-sensitive, you must enter your login credentials in the case-sensitive format.



Permissions and Privileges

You should keep in mind the following permissions for the accounts specified in this section:

- The SQL Server login must belong to the sysadmin fixed role on the target instance.
- The Windows account must have Windows Administrator privileges on the target instance to collect group membership information.
- The account specified for gathering information about OS and AD objects must have admin access to the target server and at least login access to the SQL Secure Repository.

After you specify your connection credentials, click **Next** to go to [Specify which SQL Server objects to audit](#).

SQL Secure tells you who has access to what on your SQL Server databases. [Learn more](#) > >

IDERA Website	Products	Purchase	Support	Community	About Us	Resources	Legal
-------------------------------	--------------------------	--------------------------	-------------------------	---------------------------	--------------------------	---------------------------	-----------------------

Define folders for file system permissions checks

In the **Specify Audit Folders** section you can specify which folders will be audited for collecting file system permission information.

Click **Add** and type a mapped drive folder or a folder in UNC format. You can add as many folders as you require.

If you want to change or delete any of the previously added folders, click **Edit** or **Remove** respectively.

Click **Next** to go to [adding Server Group Tags](#).

SQL Secure tells you who has access to what on your SQL Server databases. [Learn more > >](#)

IDERA Website	Products	Purchase	Support	Community	About Us	Resources	Legal
--------------------------	-----------------	-----------------	----------------	------------------	-----------------	------------------	--------------

Add server group tags

In the **Add to Server Group Tag** section you can specify which tags you want to apply to the SQL Server you are registering. Tags allow you to group SQL Servers for better management as you are making changes to the group as a whole instead of to each SQL Server individually. By default, the **All Servers** tag is already added.

Select the tag you want to apply, and then click **Add**. You can add as many tags as you require. If you want to change or delete any of the previously added tags, click **Edit** or **Remove** respectively.

If no tag is selected, SQL Secure applies the **All Servers** tag.

Click **Next** to go to [specifying connection credentials](#).

SQL Secure tells you who has access to what on your SQL Server databases. [Learn more >>](#)

IDERA Website	Products	Purchase	Support	Community	About Us	Resources	Legal
--------------------------	-----------------	-----------------	----------------	------------------	-----------------	------------------	--------------

Select SQL Server objects to audit

In the **Select SQL Server Objects to Audit** section of this wizard, you can specify which the objects IDERA SQL Secure will audit to collect security information. By default, SQL Secure audits all SQL Server objects.

To select objects to audit:

1. Check the objects you want to audit in the list.
2. For those objects that have scope options, click the blue text in the **Scope matches** column, and select the appropriate option (User, System, System or User).
3. For those objects that have naming options, click the blue text in the **Name matches** column, and a new window opens with the following options:
 - Names matching **Any**
 - Names matching **Like** where you can type several name strings (wildcards allowed). To add a name, type in the respective **Enter match string** box and click **Add**. The added names will be listed in the **Match Strings** box. You can use the option **Remove** to delete match string names from the list.
4. SQL Secure displays at the bottom section of this window a summary of all selected objects and their specified settings.
5. Click **Next** to go to [Schedule Snapshots](#).



When you are selecting objects to audit, be aware that you need to include all the objects your policies need to appropriately assess security risks.

SQL Secure tells you who has access to what on your SQL Server databases. [Learn more](#) > >

IDERA Website	Products	Purchase	Support	Community	About Us	Resources	Legal
-------------------------------	--------------------------	--------------------------	-------------------------	---------------------------	--------------------------	---------------------------	-----------------------

Schedule snapshots

The **Schedule Snapshots** section allows you to choose the best times to collect data from your SQL Server instance.

By default, snapshots are scheduled to run at 3:00 am every Sunday morning (using the local time of the computer hosting the IDERA SQL Secure Repository). The first snapshot is taken at the first scheduled snapshot collection time. You can manually take a snapshot at any time by right-clicking the SQL Server instance in the Explore Permissions view and then selecting **Take Snapshot** from the context menu.



SQL Secure requires that a user be logged in as the SQL Secure Administrator to view snapshot schedules.

To change the default schedule, click **Change** and select the new time and frequency. When possible, schedule snapshots to run during non-peak or off-hour times.

Schedule Snapshots window actions

Item	Description
Keep snapshot for [number] days before allowing them to be groomed.	Specify the number of days that you want to store snapshots in the SQL Secure Repository. Specify a number between 1 and 10000 days. By default, this value is set to 60 days.
Enable Scheduling	Select this option to enable the audit snapshot schedule. If this option is disabled, you have to take snapshots manually.
Change	Click this button to change the default snapshot collection schedule (3:00 am every Sunday morning). A new window opens where you can specify: <ul style="list-style-type: none"> The schedule to be Daily, Weekly, or Monthly The respective settings according to the type of schedule selected. For example if you choose Weekly, you can select which days of the week SQL Secure will collect the data and how frequently the schedule will run, for instance, every 1 or 2 weeks. The specific time of the day when the information will be collected, its frequency, and the Starting and Ending dates for this schedule option.

SQL Server Agent Status

Additionally, this section of the wizard allows you to see the status of your SQL Server Agent. Take into account that SQL Secure uses the SQL Server Agent for data collection and grooming. This Agent is located in the SQL Server hosting the Repository Database. You can see in this section whether the Agent status is Started or Stopped.

Click **Next** to go to the following section to [Configure your email notifications](#).

View snapshot properties

To view the properties of a specific snapshot, go to the **Explore Permissions** view, expand the SQL Server from which the snapshot was taken, right-click the respective snapshot, and select **Properties** from the context menu. For more information about what properties you can see, go to [View Snapshot Properties](#).

In this same view, you can also see the list of snapshots and baselines for a specific SQL Server. To see this information select your required server from the Audited SQL Servers tree and SQL Secure displays an **Audit History** section on the respective **Server Summary**. For more information about this view, go to [View single server summary](#).

SQL Secure tells you who has access to what on your SQL Server databases. [Learn more >>](#)

IDERA Website	Products	Purchase	Support	Community	About Us	Resources	Legal
-------------------------------	--------------------------	--------------------------	-------------------------	---------------------------	--------------------------	---------------------------	-----------------------

Enable email notification

The **Configure Email Notification** section allows you to configure the way email notifications are sent after a snapshot is collected. You can set the following notifications:

- Email notifications sent after a snapshot is collected successfully, or only if there are warnings or errors. (Always, On Warning and Error, or Only On Error)
- Email notifications sent depending on the level of the security risks discovered. (Any Risk, On High and Medium Risks, or Only on High Risks)

Once you have configured when notifications are sent, specify who should receive these emails by specifying the appropriate email address in the **Email Recipient** field. To enter multiple email addresses, separate each address with a semi-colon.

If you do not want to receive email notifications for snapshots status or security findings, uncheck **Send Email Notification after Data Collection** and **Send Email Notification for Security Findings**.



Email notifications cannot be sent until IDERA SQL Secure has been configured to communicate with your SMTP provider. You can configure these settings by selecting **Tools > Configure SMTP Email** from the menu bar. For more information, see [Configure Email Settings](#).

Click **Next** to go to the [Add to policies](#) section.



Take into account that when you have no policies created yet, the wizard will go directly to the [Take a Snapshot](#) section. However, the new registered SQL Server will be automatically added to the default **All Servers** policy and to any other policies defined with **Automatic Policy Membership**.

SQL Secure tells you who has access to what on your SQL Server databases. [Learn more > >](#)

IDERA Website	Products	Purchase	Support	Community	About Us	Resources	Legal
-------------------------------	--------------------------	--------------------------	-------------------------	---------------------------	--------------------------	---------------------------	-----------------------

Add server to existing policies

The **Add to Policies** section allows you to include your newly registered instance to any existing custom policies. This section displays only when you have created policies whose server membership has been explicitly defined. For example, if you created a policy that included only your test SQL Server 2012 instance (rather than, for example, all SQL Server 2012 instances), this window will list that policy and allow you to include the newly registered instance.

In this section you can see two lists:

- The **User-defined Policy Membership** - where you can select which policies should include the SQL Server instance you are registering.
- The **Automatic Policy Membership** - where you can view those policies where your SQL Server instance will be added automatically.

Click **Next** to go to the [Take Snapshot](#) section.

SQL Secure tells you who has access to what on your SQL Server databases. [Learn more >>](#)

IDERA Website	Products	Purchase	Support	Community	About Us	Resources	Legal
-------------------------------	--------------------------	--------------------------	-------------------------	---------------------------	--------------------------	---------------------------	-----------------------

Choose to take snapshot now

The **Take Snapshot** section gives you the option to collect audit data at the end of the registration process. Choose this option when you want to immediately perform a security assessment on the newly registered instance. Note that you can also manually take a snapshot later by selecting **Take Snapshot** on the **Explore Permissions** view (Click [here](#) for more information about Snapshots). IDERA SQL Secure must collect data from the Registered Server to assess and audit security risks and access rights.

If you want to take a snapshot as soon as finish registering your SQL Server instance, make sure to check the option **Yes, collect data upon completion of the registration process**.

Click **Next** to go [Registration Summary](#) section.

SQL Secure tells you who has access to what on your SQL Server databases. [Learn more](#) > >

IDERA Website	Products	Purchase	Support	Community	About Us	Resources	Legal
-------------------------------	--------------------------	--------------------------	-------------------------	---------------------------	--------------------------	---------------------------	-----------------------

Review registration summary

Review the provided summary for the instance you are adding to IDERA SQL Secure, and then click **Finish**. If you want to change a setting now, click **Back** to return to the appropriate section. You can also change audit settings later using the [Audited SQL Server Properties](#) window.

When you finish this wizard, SQL Secure enables auditing on the selected SQL Server instance.

SQL Secure tells you who has access to what on your SQL Server databases. [Learn more > >](#)

IDERA Website	Products	Purchase	Support	Community	About Us	Resources	Legal
-------------------------------	--------------------------	--------------------------	-------------------------	---------------------------	--------------------------	---------------------------	-----------------------

Import SQL Server instances

IDERA SQL Secure requires that you register any SQL Server instances that you want to monitor before auditing begins. The **Register a SQL Server** option allows you to add instances to SQL Secure one at a time. For environments having many SQL Server instances, a quick time saver is to import a .csv file. The **Import SQL Servers** option lets you quickly upload a file containing the ServerName, AuthType (0 = Windows Authentication, 1 = SQL Server Authentication), User, Password, UseSameCredentials (0 = false, 1 = true), WindowsUser, and WindowsUserPassword data for the instances in your environment that you want to audit. Once imported, new SQL Server instances are registered directly in the repository with default settings. If the SQL Server instance already exists in the repository, then SQL Secure updates the login credentials for the server.



After importing your SQL Server instances, be sure to go to the Server Group Tags view to add the new servers to tag for better management. For more information about tags, see [Manage server group tags](#).

To import SQL Server instances:

1. In the Security Summary view, click **Import SQL Servers** at the top of the Summary tab. Alternatively, you can go to **File** menu and select **Import SQL Servers**.
OR
In the Manage SQL Secure view, click **Import SQL Servers** at the top of the Repository Status window. Alternatively, you can go to **File** menu and select **Import SQL Servers**.
The **Import SQL Servers** window opens.
2. Locate the file you want to import. Note that the file must be in the .csv format.
3. Click **Open**, and then click **OK**. SQL Secure validates the file format and displays the message, "Any registered servers found in the import file will have their credentials updated based on those specified in the file."
4. Click **OK**.

SQL Secure tells you who has access to what on your SQL Server databases. [Learn more > >](#)

IDERA Website	Products	Purchase	Support	Community	About Us	Resources	Legal
-------------------------------	--------------------------	--------------------------	-------------------------	---------------------------	--------------------------	---------------------------	-----------------------

Use filters to specify which data is collected

IDERA SQL Secure uses snapshot filters to control the data collected from your audited SQL Server instances. Each filter rule defines which data, such as permissions on user tables in a specific database, is collected and included in the snapshot.

By default, SQL Secure collects all available audit data. You can edit this default filter rule or delete it after you have defined your custom filter.



Filters applied per Instance

Custom filters are applied at the instance level and are unique to that instance. You can create a different filter for each instance. You can also create more than one filter, depending on your assessment needs. When multiple filters are defined, SQL Secure aggregates them, collecting all data identified by all the filters associated with this instance.

Go to [Add Filters](#) to view about specifying filter properties, databases, and objects.

SQL Secure tells you who has access to what on your SQL Server databases. [Learn more > >](#)

IDERA Website	Products	Purchase	Support	Community	About Us	Resources	Legal
-------------------------------	--------------------------	--------------------------	-------------------------	---------------------------	--------------------------	---------------------------	-----------------------

Add new filter

The **Add Filter** wizard allows you to choose the appropriate criteria to use when collecting snapshot information. By default, IDERA SQL Secure collects all security information.



Consider using the default filter settings in your initial policy assessments until you know exactly which data your policies will require. Using the default filter settings ensures that all the data required by your policies is collected

Access this wizard

To open the **Add Filter** wizard:

1. Right-click the server you want to edit, and select **Properties**. You can find your registered filters on the **Explore Permissions** (Audited SQL Servers tree) or **Security Summary** (Servers in Policy) views.
2. Select the **Filters** tab.
3. Click **New Filter** on the top section.

Add Filter wizard

The **Add Filter** wizard lets you designate what types of permission and security data will be collected. Use this wizard to store your filters in the Repository database, which are then used by SQL Secure when taking [snapshots](#).

SQL Secure tells you who has access to what on your SQL Server databases. [Learn more > >](#)

IDERA Website	Products	Purchase	Support	Community	About Us	Resources	Legal
-------------------------------	--------------------------	--------------------------	-------------------------	---------------------------	--------------------------	---------------------------	-----------------------

Specify filter properties

After you open the **Add Filter** wizard, click **Next** and access the **Specify filter properties** section. This window allows you to name your filter and give it a description. It is important to give your filter a name you can easily distinguish.

Click **Next** to access the [Specify Databases and objects](#) section.

SQL Secure tells you who has access to what on your SQL Server databases. [Learn more >>](#)

IDERA Website	Products	Purchase	Support	Community	About Us	Resources	Legal
-------------------------------	--------------------------	--------------------------	-------------------------	---------------------------	--------------------------	---------------------------	-----------------------

Specify databases and objects

This window allows you to select which databases you want to audit using IDERA SQL Secure.

Options	Description
User databases and System databases	For some objects, the Scope Matches column allows you to select if you want to use System , User , or both (System or User) databases types for your snapshot.
Databases names matching	<ul style="list-style-type: none"> • Select Any if you want to include all databases names in your snapshot. • If you want to specify strings that your filter will use to match the names of your databases, click Any on the Name matches column, and a new window opens. In the list of available elements, click the elements you want to move to the Selected list, and then click Add. You can search for a specific element by typing a specific string in the Enter match string field (you can use wildcards), and then click Add. The string added to the Match strings field. You can also remove strings from this box by selecting the string and clicking Remove.

To create the filter click **OK**.

SQL Secure tells you who has access to what on your SQL Server databases. [Learn more >>](#)

IDERA Website	Products	Purchase	Support	Community	About Us	Resources	Legal
-------------------------------	--------------------------	--------------------------	-------------------------	---------------------------	--------------------------	---------------------------	-----------------------

Edit filter settings

The **Filter Properties** window allows you to edit the properties of your snapshot filter. You can edit the name and description of your filter, see when it was last modified, and choose which audit data you want to collect in your snapshots.



Consider using the default filter settings in your initial policy assessments until you know exactly which data your policies will require. Using the default filter settings ensures that all the data required by your policies is collected.

Access this window

To access the **Filter Properties** window:

1. Right-click a SQL Server instance in the Policy Servers tree in the **Security Summary** view, and then select **Properties**.
The **Audited SQL Server properties** window opens.
2. Click the **Filters** tab.
A list of all available filters is displayed.
3. Select the filter you want to edit, and then click **Properties**.
The **Filter properties** window opens where you can edit the name, description, and the objects you want to include in your snapshot. For more information about selecting objects and determining their settings, go to [Specify database objects](#).

SQL Secure tells you who has access to what on your SQL Server databases. [Learn more >](#)

IDERA Website	Products	Purchase	Support	Community	About Us	Resources	Legal
-------------------------------	--------------------------	--------------------------	-------------------------	---------------------------	--------------------------	---------------------------	-----------------------

Use snapshots to collect audit data

A snapshot is a set of audit data that IDERA SQL Secure has collected from a specific SQL Server instance. You can configure snapshot filters to select which SQL Server objects you want to audit. You can take snapshots [manually](#), as you need fresh data, or [schedule snapshots](#) to be taken at regular intervals.

SQL Secure uses audit snapshots to capture SQL Server user and object permission settings. These snapshots are listed in the **Explore Permissions** view by expanding the respective servers of the Audited SQL Servers tree. When you click a Snapshot, information about the snapshot is displayed on the right section of the console where the following tabs are displayed: Snapshot Summary, User Permissions, Role Permissions, and Object Permissions.

The **Snapshot Summary** tab provides detailed information about your snapshot, including the time it was taken, the collection statistics, audit summary information, filter information, and a listing of any Suspect Windows accounts or unavailable databases that were encountered while the Snapshot was being taken. For more information on unresolved Windows accounts, see [Identify Suspect Windows accounts](#). For more information on unavailable databases, see [Identify Unavailable Databases](#).

Data located on the Snapshot Summary

The Snapshot Summary contains the following types of information:

Snapshot Properties

Provides the basic status of the selected snapshot, the time it was collected, how long the collection took to complete, whether or not it has been selected as a baseline, and any comments associated with it.

Audit Summary

Lists the statistics of the snapshot. These statistics include the number of objects, permissions, databases, logins, Windows accounts, Windows well-known groups associated with the snapshot, and whether Weak Password Detection is enabled or not.



To collect and review data about the password health of your SQL logins, you need to enable the [Weak password detection](#).

Windows Accounts

Provides a partial list of the Windows users and groups that have access to the selected SQL Server instance either by a direct SQL Login or inherited via group membership.

OS Windows Accounts

Provides a partial list of the Windows users and groups that have access to OS objects but do not interact with SQL Server objects.

Suspect Windows Accounts

Lists the Accounts that SQL Secure was unable to collect data on. This can occur when SQL Secure does not have the proper rights to collect information on these users, or if the account was deleted. For more information, see [Identify suspect Windows accounts](#).

Suspect OS Windows Accounts

Lists the Accounts that SQL Secure was unable to collect data on. This can occur when SQL Secure does not have the proper rights to collect information on these users, or if the account was deleted. For more information, see [Identify suspect Windows accounts](#).

Unavailable Databases

Lists the databases that SQL Secure was unable to collect SQL Server security data on. This can happen when a database is unavailable during SQL Secure data collection; for example, a database being backed up is unavailable for data collection. For more information, see [Identify unavailable databases](#).

Filters

Provides the filter information associated with the selected snapshot. For more information, see [Add new filter](#).

SQL Secure tells you who has access to what on your SQL Server databases. [Learn more >>](#)

IDERA Website	Products	Purchase	Support	Community	About Us	Resources	Legal
-------------------------------	--------------------------	--------------------------	-------------------------	---------------------------	--------------------------	---------------------------	-----------------------

Take snapshot

To immediately collect a data snapshot (audit a SQL Server instance), right-click the server to audit, and select **Take Snapshot** from the context menu. You can right-click a server from the **Security Summary** view (Server in Policy tree) or **Explore Permissions** view (Audited SQL Servers tree).



The **Take a Snapshot** option can be found on several places in the IDERA SQL Secure console such as:

- **Snaphshots** top menu - **Take Snapshot Now**
- **Explore Permissions** view - **Take Snapshot** option located in the **SQL Server Properties** of the **Server Summary** when you click a server of the Audited SQL Servers tree.
- **Explore Permissions** view - **Take Snapshot** option located on top of the **Snapshot Summary** when you click an existing snapshot of the Audited SQL Servers tree.

SQL Secure tells you who has access to what on your SQL Server databases. [Learn more >>](#)

IDERA Website	Products	Purchase	Support	Community	About Us	Resources	Legal
-------------------------------	--------------------------	--------------------------	-------------------------	---------------------------	--------------------------	---------------------------	-----------------------

Schedule snapshots for routine data collection

The **Schedule Snapshots** section allows you to choose the best times to collect data from your SQL Server instance.

By default, snapshots are scheduled to run at 3:00 am every Sunday morning (using the local time of the computer hosting the IDERA SQL Secure Repository). The first snapshot is taken at the first scheduled snapshot collection time. You can manually take a snapshot at any time by right-clicking the SQL Server instance in the Explore Permissions view and then selecting **Take Snapshot** from the context menu.



SQL Secure requires that a user be logged in as the SQL Secure Administrator to view snapshot schedules.

To change the default schedule, click **Change** and select the new time and frequency. When possible, schedule snapshots to run during non-peak or off-hour times.

Schedule Snapshots window actions

Item	Description
Keep snapshot for [number] days before allowing them to be groomed.	Specify the number of days that you want to store snapshots in the SQL Secure Repository. Specify a number between 1 and 10000 days. By default, this value is set to 60 days.
Enable Scheduling	Select this option to enable the audit snapshot schedule. If this option is disabled, you have to take snapshots manually.
Change	Click this button to change the default snapshot collection schedule (3:00 am every Sunday morning). A new window opens where you can specify: <ul style="list-style-type: none"> The schedule to be Daily, Weekly, or Monthly The respective settings according to the type of schedule selected. For example if you choose Weekly, you can select which days of the week SQL Secure will collect the data and how frequently the schedule will run, for instance, every 1 or 2 weeks. The specific time of the day when the information will be collected, its frequency, and the Starting and Ending dates for this schedule option.

SQL Server Agent Status

Additionally, this section of the wizard allows you to see the status of your SQL Server Agent. Take into account that SQL Secure uses the SQL Server Agent for data collection and grooming. This Agent is located in the SQL Server hosting the Repository Database. You can see in this section whether the Agent status is Started or Stopped.

Click **Next** to go to the following section to [Configure your email notifications](#).

View snapshot properties

To view the properties of a specific snapshot, go to the **Explore Permissions** view, expand the SQL Server from which the snapshot was taken, right-click the respective snapshot, and select **Properties** from the context menu. For more information about what properties you can see, go to [View Snapshot Properties](#).

In this same view, you can also see the list of snapshots and baselines for a specific SQL Server. To see this information select your required server from the Audited SQL Servers tree and SQL Secure displays an **Audit History** section on the respective **Server Summary**. For more information about this view, go to [View single server summary](#).

SQL Secure tells you who has access to what on your SQL Server databases. [Learn more >>](#)

IDERA Website	Products	Purchase	Support	Community	About Us	Resources	Legal
-------------------------------	--------------------------	--------------------------	-------------------------	---------------------------	--------------------------	---------------------------	-----------------------

Designate a baseline snapshot

A baseline snapshot will not be deleted in the normal IDERA SQL Secure grooming process.

To mark a snapshot as a baseline you can use any of the following paths (both available in the **Explorer Permissions** view):

- Expand the SQL Server instance of your Audited SQL Servers tree, right-click the respective snapshot, and choose **Mark as Baseline**
- Click the respective SQL Server of your Audited SQL Servers tree. The **Audit History** section of the **Server Summary** lists all available snapshots (you can see here if any of them are marked as baseline or not). Right-click the selected snapshot and choose **Mark As Baseline**.

When you select a Snapshot with the option **Mark as Baseline**, a **Baseline Snapshot** window opens where you can enter a comment associated with the selected baseline. Click **OK** to continue.

SQL Secure tells you who has access to what on your SQL Server databases. [Learn more > >](#)

IDERA Website	Products	Purchase	Support	Community	About Us	Resources	Legal
-------------------------------	--------------------------	--------------------------	-------------------------	---------------------------	--------------------------	---------------------------	-----------------------

Set snapshot grooming schedule

Grooming is the process of deleting audit snapshots from the IDERA SQL Secure Repository. Grooming allows you to keep only the permissions data you need for future reporting. SQL Secure allows you to schedule snapshot grooming at the enterprise and at the individual SQL Server instance levels. Keep in mind that baseline snapshots and snapshots associated with saved assessments cannot be groomed.



Grooming should be scheduled for off-peak hours so that it does not interfere with your normal business operation. Depending on the amount of data collected, grooming can be a performance intensive operation.



To keep a snapshot, mark it as a baseline. For more information, see [Designate a baseline snapshot](#).

You can configure the enterprise level grooming schedule on the **Grooming schedule** window.

To schedule the grooming schedule at the enterprise level:

1. Select from the menu toolbar **Snapshots > Grooming Schedule**. The **Grooming Schedule** window opens. By default the grooming process occurs every Monday at 12:00 AM
2. If you want to change the default grooming schedule, click **Change**. A **Job Schedule** window opens.
3. Edit the schedule according to your requirements. You can specify if you want to have a Daily, Weekly, or Monthly grooming schedule and define the respective frequency settings.
4. Click **OK** to save the schedule.

If you do not want to have a grooming schedule, you can disable the option **Enable Grooming Schedule**.

Additionally, the **Grooming Schedule** window informs you the SQL Server Agent Status of the SQL Server hosting the Repository Database. SQL Secure uses this agent for data collection and grooming.



In addition to routine snapshot grooming, the grooming process deletes all the snapshots that are associated with any SQL Server instances you have removed from the SQL Secure Console

Set a grooming schedule at the SQL server instance level

Snapshot retention is the number of days SQL Secure will continue to store all your non-baseline audit snapshots in the SQL Secure Repository.

To schedule grooming at the SQL Server instance level:

1. Right-click the SQL Server instance you want to configure in the Audited SQL Servers tree of the **Explore Permissions** view and select **Properties**.
2. The **Audited SQL Server Properties** window opens, select the **Schedule** tab.
3. Specify the number of days between 1 and 10000 that SQL Secure will keep snapshots before grooming them.
4. Click **OK** to save changes.

SQL Secure tells you who has access to what on your SQL Server databases. [Learn more > >](#)

IDERA Website	Products	Purchase	Support	Community	About Us	Resources	Legal
-------------------------------	--------------------------	--------------------------	-------------------------	---------------------------	--------------------------	---------------------------	-----------------------

Explore Security Settings

IDERA SQL Secure allows you to view the permission settings of individual users, roles, and objects, at a particular point in time, for each SQL Server instance that has been added to SQL Secure for auditing.

The **Explore Permissions** view allows you to review the following security information:

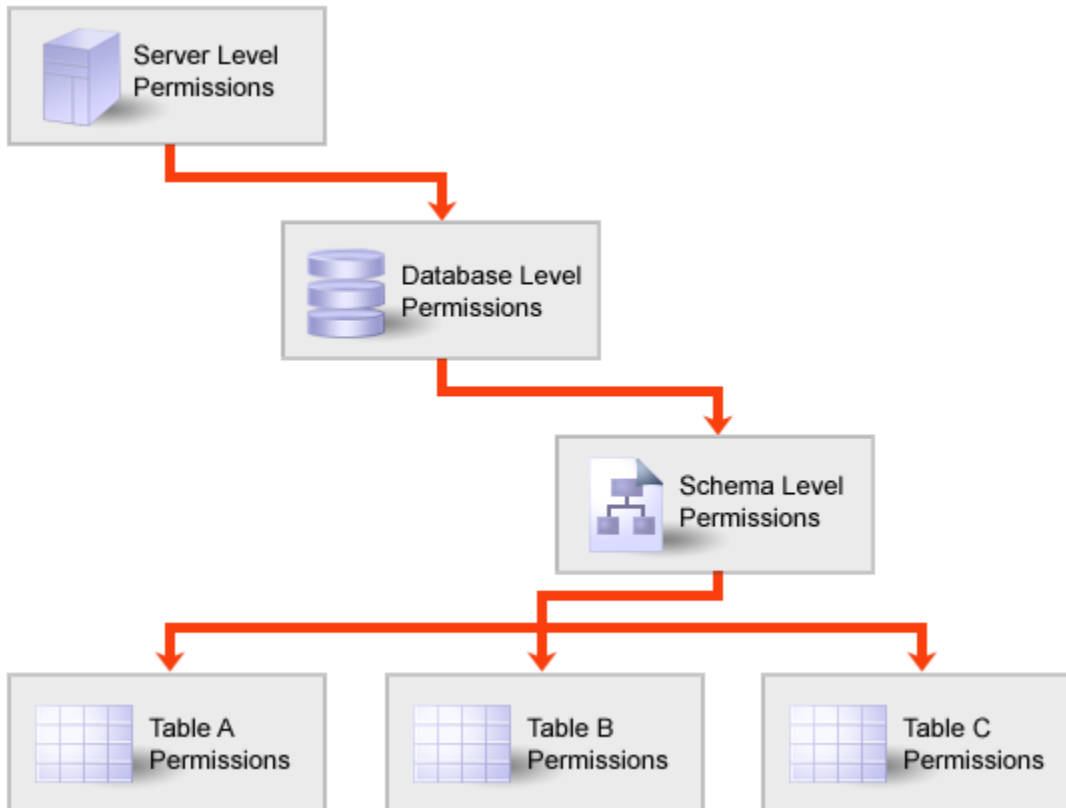
- Enterprise level permissions
- SQL Server level permissions
- Individual user permissions

Assigned permissions are permissions that are explicitly granted or denied to a user, group, or role for a particular server or database object. A user, group, or role can have more than one assigned permission. Effective permissions are the net effect of assigned permissions, permissions inherited from the group or role membership, and covering permissions (SQL Server 2005 and later).

Analyzing permissions

It is important to understand that when analyzing a user's permissions, SQL Secure shows multiple permissions when users have inherited object permissions from a parent role on the server. For example; User A has been given explicit delete permissions at the server, database, schema, and table levels. Your company is now restricting the rights to a particular table and you need to revoke User A's right to delete. To accomplish this task, revoke the user's right to delete at the particular table level and also at the parent levels.

The following illustration depicts an example permissions scenario:



Experiencing irregularities when searching user and object permissions

There may be times when it seems as though the permissions for a user or table have changed drastically when no changes have actually occurred. The following table lists some of the possible causes:

Cause	Solution
A user or table is deleted and then the same name is used again in the future.	Make sure that best practices are used when adding and deleting user and table names, or properly note the change to avoid confusion.
A user or table name is changed	Properly note the change to avoid confusion.

A user or table is deleted from the system	Properly note the change to avoid confusion.
--	--

SQL Secure allows you to audit all users and object permissions on SQL Server instances that have been registered with SQL Secure. For more information about SQL Server permissions, see Microsoft Books Online.

SQL Secure tells you who has access to what on your SQL Server databases. [Learn more > >](#)

IDERA Website	Products	Purchase	Support	Community	About Us	Resources	Legal
-------------------------------	--------------------------	--------------------------	-------------------------	---------------------------	--------------------------	---------------------------	-----------------------

Explore object permissions

To view Object Permissions in IDERA SQL Secure, in the **Explore Permissions** view follow these steps:

1. Click a snapshot from the Audited SQL Servers tree on the left.
2. Select the **Object Permissions** tab to explore SQL Server permission information for all database and server objects, as well as the password health of SQL logins.
3. Use the tree structure to navigate to the object for which you need permissions information, and click it.
4. Permissions information for that object will be displayed. You can view permissions information for every object that was included in your snapshot filter.

View the properties of the SQL Server object

From the **Object Permissions** tab, right-click the object you want more information on, and then select **Properties**. SQL Secure displays the **Object Properties** window and lists information relevant to the object type selected. For example, when you view Login Properties, you can review the security settings applied to this login plus its most recent password health.



It could take up to a minute, depending on your specific configuration, to populate the **Object Properties** window.

According to the type of object you select, SQL Secure will display the object's Properties window. Click the following links to view a better description of the objects' specific properties window:

- [Database Properties](#)
- [SQL Login Properties](#)

SQL Secure tells you who has access to what on your SQL Server databases. [Learn more > >](#)

IDERA Website	Products	Purchase	Support	Community	About Us	Resources	Legal
-------------------------------	--------------------------	--------------------------	-------------------------	---------------------------	--------------------------	---------------------------	-----------------------

View database properties

The IDERA SQL Server **Database Properties** window displays the permissions information associated with the selected database. You can view:

- The owner and status of the selected database
- Whether the guest SQL Server login is enabled on this database
- The account or login (grantee) that was granted or denied permissions on the database
- The type of permission, and whether it was granted or denied
- The account or login (grantor) granting or denying this permission
- The source permission, object, and type from which the effective permission was inherited

You can view **Explicit Only** permissions or **Include fixed role and inherited** permissions, by checking the appropriate option and clicking **Show Permissions**. You can also save or print the database object permissions information by clicking the appropriate icon above the permissions table.

SQL Secure tells you who has access to what on your SQL Server databases. [Learn more > >](#)

IDERA Website	Products	Purchase	Support	Community	About Us	Resources	Legal
-------------------------------	--------------------------	--------------------------	-------------------------	---------------------------	--------------------------	---------------------------	-----------------------

View SQL login properties

To access the **Login Properties** window for a specific login account in IDERA SQL Server, expand the Security folder in the Snapshot tree, select the **Logins** object, and then right-click the specific login on the table of the right and select **Properties**.

Use the **Login Properties** window to review the SQL login security properties for the selected login as well as its most recent password health.

Password health indicates whether or not the password associated with the account is considered weak. You can [configure how SQL Secure detects weak passwords](#).



By default, the IDERA Level 2 and Level 3 [policy templates](#) enforce password health.

Possible password health states include:

Password health state	What it means
Blank	The password for this login is either blank or null, which means no password is required for authentication or successful connection to databases hosted by your audited SQL Server instances.
Matches login name	The password for this login matches the name of the login.
N/A	The password for this login was not checked, most likely because the login is a Windows user account.
OK	This login most likely has a strong password because the password does not match any of the words and phrases in the Default Weak Passwords list or the additional and custom passwords you specified.
Weak	The password for this login matches one or more of the words and phrases in the Default Weak Passwords list or the additional and custom passwords you specified.

Available tabs on the Login Properties window

The **General** tab summarizes the key security settings and login properties typically found on the General, Server Role, and Status tabs in the Microsoft SQL Server client. For more information, see Microsoft Server Books Online.

The **Permissions** tab summarizes the key security settings and login properties typically found on the Explicit Permissions pane of the Securables tab of the Microsoft SQL Server client. For more information, see Microsoft Server Books Online.

SQL Secure tells you who has access to what on your SQL Server databases. [Learn more > >](#)



IDERA Website	Products	Purchase	Support	Community	About Us	Resources	Legal
-------------------------------	--------------------------	--------------------------	-------------------------	---------------------------	--------------------------	---------------------------	-----------------------

Explore role permissions

The **Role Permissions** window of IDERA SQL Secure allows you to explore SQL Server permission information for specific roles on audited SQL Servers in your enterprise.

Find role permissions for a particular database

To view Role Permissions, in the **Explore Permissions** view follow these steps:

1. Click a snapshot from the Audited SQL Servers tree on the left.
2. Select the **Role Permissions** tab.
3. **Select a database to analyze** by either typing the database name into this box or by clicking the ellipsis button , selecting the database you want to analyze, and then clicking **OK**.
4. **Select a role to analyze** by either typing the name of the role into the field or by clicking the ellipsis button , selecting the role you want to analyze, and then clicking **OK**.
5. Click the **Show Permissions** button to see the results.

Change the audit data

To change which audit data you are exploring, click the hyperlink text, on top of the Summary section, that lists the date and time of the currently selected snapshot (by default, this date and time represents the last successful snapshot). SQL Secure opens a new window that displays all available snapshots, their status, and whether they are baseline snapshots or not.

Additionally, you can select any of the available snapshots and click **Properties** to access the respective Snapshot Properties window.

SQL Secure tells you who has access to what on your SQL Server databases. [Learn more > >](#)

IDERA Website	Products	Purchase	Support	Community	About Us	Resources	Legal
-------------------------------	--------------------------	--------------------------	-------------------------	---------------------------	--------------------------	---------------------------	-----------------------

Role permissions summary

The IDERA SQL Secure **Summary** tab on the **Role Permissions** tab includes SQL Server permission settings for the role you specified in the Role Permissions search criteria. Use the **Summary** tab to view the Role properties, role members, and information about their logins.

SQL Secure tells you who has access to what on your SQL Server databases. [Learn more >>](#)

IDERA Website	Products	Purchase	Support	Community	About Us	Resources	Legal
-------------------------------	--------------------------	--------------------------	-------------------------	---------------------------	--------------------------	---------------------------	-----------------------

Assigned role permissions

The IDERA SQL Secure **Assigned Permissions** tab lists all the explicitly defined and inherited permissions that apply to calculating the role members' effective permissions. You can view permissions information for the selected role and any parent role to which it belongs.

Usually this information is grouped by type of object. You can expand any type of object and see the properties of the objects that correspond to that type.

SQL Secure tells you who has access to what on your SQL Server databases. [Learn more >>](#)

IDERA Website	Products	Purchase	Support	Community	About Us	Resources	Legal
--------------------------	-----------------	-----------------	----------------	------------------	-----------------	------------------	--------------

Effective role permissions

The IDERA SQL Secure **Effective Permissions** tab lists all the effective permissions the selected role has on objects in the target database. Effective permissions are the net effect of assigned permissions and permissions inherited from any parent roles.

Click **Calculate Effective Permissions** to view all the effective permissions the selected role has (at the time the data collection was taken) on the SQL Server instance being audited.



Be aware that calculating effective permissions can take several minutes to run.

Available tabs

The **Effective Permissions** tab contains server and database permission information for the selected role. This includes the object names and types, the type of access granted to the role members, and who granted these permissions.



You can save the permissions information to an Excel spreadsheet, print the permissions search, group or select columns to filter information. You can find these options on the top right section of the **Effective Permissions** section or by right-clicking any available object and choosing the appropriate option.

SQL Secure tells you who has access to what on your SQL Server databases. [Learn more >>](#)



IDERA Website	Products	Purchase	Support	Community	About Us	Resources	Legal
-------------------------------	--------------------------	--------------------------	-------------------------	---------------------------	--------------------------	---------------------------	-----------------------

Explore user permissions

The IDERA SQL Secure Explore User Permissions window allows you to explore SQL Server permission information for specific users on audited SQL Servers in your enterprise.

Find the permissions associated with a particular user

To view **User Permissions**, in the **Explore Permissions** view follow these steps:

1. Click a snapshot from the Audited SQL Servers tree on the left.
2. Select the **Users Permissions** tab.
3. Select a user to analyze, it could be a **Windows User or Group** or **SQL Login**.
4. Type the account name of the user for whom you would like to search permissions or use the ellipsis button  to browse all users and groups contained in the collected audit data (snapshot).
5. To view about the options for filtering and finding your users, go to [Select a Windows Account](#) or [Select a SQL Server Login](#).
6. Select the level of permission to analyze, it could be a **Server Only** or a specific **Server and Database**. If you select **Server Only**, SQL Secure searches the permissions in all your current SQL Server instance. If you select **Server and Database**, you can type a specific database inside your SQL Server or click the ellipsis button  to see all available databases in your server.
7. Click **Show Permissions**. **User Permission** information appears on the bottom half of the window. The information is displayed on two sections: **Server Logins** and **Database Users**. The data is also separated into three tabs: **Summary**, **Assigned Permissions**, and **Effective Permissions**.

You can use the icons on the top right section to save your results or print out a listing of the user's permissions.



Explore Security Settings

For more information on permissions, see [Explore Security Permissions](#).

Change the audit data

To change which audit data you are exploring, click the hyperlink text that lists the date and time of the currently selected snapshot (by default, this date and time represents the last successful snapshot).

Check the password health of a user's login

Use the [Object Permissions](#) tab to check the password health a specific SQL login. You can also [configure](#) how SQL Secure detects and enforces password health.

SQL Secure tells you who has access to what on your SQL Server databases. [Learn more > >](#)

IDERA Website	Products	Purchase	Support	Community	About Us	Resources	Legal
-------------------------------	--------------------------	--------------------------	-------------------------	---------------------------	--------------------------	---------------------------	-----------------------

Select a Windows account



When you select the IDERA SQL Secure option **Windows User or Group** as the user to analyze, you can click the ellipsis button to open the **Select Windows User** window to browse for all the Windows users contained in the snapshot you are exploring. In this window you can:

Search for a particular account

Your list may include many users and groups. SQL Secure makes the process of finding particular users easy. Click the **Filter** icon that is present in each column of the **Select Windows User** window, and then either select the group from the list, or click **Custom** to sort the list using conditions.

When you choose **Custom**, the **Enter filter criteria for Domain** window opens. In this window you can add as many conditions as you require for filtering your accounts. Click **Add a condition** and specify any of the following options for the operator:

Sorting Option	Description
Starts with	Enter the first character or characters in the column to filter your list.
Contains	Enter a combination of letters or a name to filter your column list.
Ends with	Enter the last character or characters in the column to filter your list.
Does not start with	Enter the first character or characters in the column to omit from your listing.
Does not contain	Enter a combination of letters or name to omit from your list.
Does not end with	Enter the last character or characters in the column you want to omit from the listing.
Does not match	Enter the title you would like to omit from your column listing.
Not Like	Enter the name in the column you would like to omit from your column listing and all those names that are similar.

Then, specify the respective values in the **Operand** column.

Add or delete as many conditions as you want, and then click **OK**.

Search Active Directory

Alternatively, you can click **Browse Active Directory** to search Active Directory for the target Windows account or group. This action allows you to select the user or group from your Active Directory domain controller rather than from the selected snapshot. It is possible the user or group you select has not been granted permissions on the audited SQL Server instance.



To successfully view the user permissions, ensure your login account has permission to access the Active Directory domain controller.

SQL Secure tells you who has access to what on your SQL Server databases. [Learn more > >](#)

IDERA Website	Products	Purchase	Support	Community	About Us	Resources	Legal
--------------------------	-----------------	-----------------	----------------	------------------	-----------------	------------------	--------------

Select a SQL Server login



When you select to analyze a SQL Server Login through IDERA SQL Secure, you can click the ellipsis button to open the **Select SQL Login** window that lists all of the SQL logins contained in the snapshot you are exploring.

You can filter this list by clicking the filter on the top right section of the **Type** column. You can filter by All, Custom, Blanks, NonBlanks, SQL Login.

If you select **Custom**, a new window for Enter filter criteria for type opens. In this window, you can add as many conditions as you require. To view more information about the operators for these conditions, you can go to [Select a Windows User](#).

Select the login whose permissions you want to explore, and then click **OK**.

SQL Secure tells you who has access to what on your SQL Server databases. [Learn more >>](#)

IDERA Website	Products	Purchase	Support	Community	About Us	Resources	Legal
-------------------------------	--------------------------	--------------------------	-------------------------	---------------------------	--------------------------	---------------------------	-----------------------

User permissions summary

The IDERA SQL Secure **Summary** tab of the **User Permissions** Explorer contains SQL Server permission settings for the Windows account or SQL Server login you specified in the User Permissions search criteria.

Use the **Summary** tab to view which login permissions the individual user has, including the SQL Server roles to which the user belongs. You can print or save the results to an Excel spreadsheet.

SQL Secure tells you who has access to what on your SQL Server databases. [Learn more > >](#)

IDERA Website	Products	Purchase	Support	Community	About Us	Resources	Legal
-------------------------------	--------------------------	--------------------------	-------------------------	---------------------------	--------------------------	---------------------------	-----------------------

Assigned user permissions

The IDERA SQL Secure **Assigned Permissions** tab lists all the explicitly defined permissions that apply to calculating the users' effective permissions. This includes groups, roles, and aliases; as well as, covering permissions available in SQL Server 2005 or later.

SQL Secure tells you who has access to what on your SQL Server databases. [Learn more >>](#)

IDERA Website	Products	Purchase	Support	Community	About Us	Resources	Legal
-------------------------------	--------------------------	--------------------------	-------------------------	---------------------------	--------------------------	---------------------------	-----------------------

Effective user permissions

The IDERA SQL Secure **Effective Permissions** tab lists all the effective permissions the user has on server and database objects (contained within the audit filter criteria setup by the user). **Effective permissions** are the net effect of assigned permissions, permissions inherited from the group or role membership, and covering permissions (SQL Server 2005 and later).

Be aware that calculating effective permissions can take several minutes to run, depending on the number of permissions that have been granted and the complexity of your security model.

Click **Calculate Effective Permissions** to view all the effective permissions the selected user has (at the time the data collection was taken) on the SQL Server instance being audited.

Available tabs

The **Effective Permissions** tab contains server and database permission information for the selected user. This includes the object names and types, the type of access granted to the user, and who granted these permissions.

You can save the permissions information to an Excel spreadsheet or print the permissions search. To save or print the permissions information, click the grid on the top right section, and choose the appropriate option.

SQL Secure tells you who has access to what on your SQL Server databases. [Learn more >>](#)

IDERA Website	Products	Purchase	Support	Community	About Us	Resources	Legal
--------------------------	-----------------	-----------------	----------------	------------------	-----------------	------------------	--------------

View all audited servers

When you click the **Audited SQL Servers** tree in IDERA SQL Secure, on the right side of the console you can review which SQL Server instances and databases are being audited by SQL Secure.

Audited SQL Servers

Server

Provides the name of the SQL Server instance.

Version

Provides the version of SQL Server that is running on each instance.

Last Audit

Provides the date and time when audit data was last collected for this instance.

Audit Status

Provides the status of the last snapshot taken for this instance.

Databases

According to the SQL Server you select, you can its database information.

Database

Provides the name of each database hosted on the selected instance.

Status

Provides the status of each database, such as whether the database is available or offline.

Owner

Provides the name of the owner for each database.

Guest Enabled

Indicates whether the guest account is enabled on the database.

SQL Secure tells you who has access to what on your SQL Server databases. [Learn more > >](#)

IDERA Website	Products	Purchase	Support	Community	About Us	Resources	Legal
-------------------------------	--------------------------	--------------------------	-------------------------	---------------------------	--------------------------	---------------------------	-----------------------

View single server summary

To view IDERA SQL Secure information related to a specific SQL Server, click the server under the Audited SQL Servers tree, and on the right side of the console, SQL Secure displays the respective server summary information. The **Server Summary** window allows you to view the following:

- **SQL Server properties.** SQL Server Properties displays the name of the instance, the version and edition of the SQL Server being used, and the Windows Operating System the SQL Server instance is operating on.
- **Auditing status.** On the right section of the Server Summary, the Auditing Status displays the status of the last collection, the date and time of the next scheduled collection, and basic statistics for the latest snapshot.
- **Audit history.** Audit History provides detailed information about your snapshot. The table below describes the information displayed in this section.

Information contained in Audit History

The following table describes the information displayed in each of the columns:

Item	Description
Date/Time	The date and time when the snapshot was taken.
Status	The status of the snapshot (audit data collection).
Comments	Description of any issues the collector encountered.
Baseline	Whether or not the snapshot is marked as a baseline.
Objects	The number of objects audited in the snapshot.
Permissions	The number of permissions collected in the snapshot.
Logins	The number of logins collected in the snapshot.
Windows Accounts	The number of Windows accounts collected in the snapshot.

SQL Secure tells you who has access to what on your SQL Server databases. [Learn more >>](#)

IDERA Website	Products	Purchase	Support	Community	About Us	Resources	Legal
----------------------	-----------------	-----------------	----------------	------------------	-----------------	------------------	--------------

View snapshot summary

The IDERA SQL Secure **Snapshot Summary** tab lists statistics and other information about the selected snapshot. To access this information, expand the SQL Server for which you want to see its snapshots and then select a specific Snapshot.

Each snapshot is a listing of permission settings on a SQL Server instance at a particular point in time. Snapshots help you assess and manage your security settings. This provides a powerful tool you can use to diagnose security problems and quickly see where changes occur.

The **Snapshot Summary** displays the following sections:

- **Snapshot properties.** Gives general information about the snapshot, the status, the collection time, the duration, whether it is marked as a baseline snapshot or not, and any additional comments.
- **Audit Summary.** Displays the main summary information retrieved by the snapshot such as number of objects, permissions, databases, logins, windows accounts, OS controlled windows groups, and whether Weak Password Detection is enabled or not (Click [here](#) to enable/disable Weak Health Detection)
- **Accounts.** [Windows accounts](#), [OS Windows accounts](#), [Suspect Windows accounts](#), [Suspect OS Windows accounts](#), [Unavailable databases](#), and [Filters](#).



Login counts may differ from what is displayed in SQL Server 2005 or later. This count displays the number of Server Principles collected. In SQL Server 2005 or later, Server Principles include Logins, Server Roles, and Certificates, while in SQL Server 2000, principles include only Logins.

Configuration before collecting snapshots

Before snapshots are taken, you must tell SQL Secure what permission data you would like to collect and when you want SQL Secure to collect it.

You can specify these settings in **Audited SQL Server Properties** window that you can access by clicking the **Configure Audit Settings** in the upper section of the **Snapshot Summary**.

Permission Data

Configure the permission data that it is most important to you to be taken by the snapshot.

To configure these settings, in the **Audited SQL Server Properties** window, select the **Filters** tab, then specify those filters that will help you collect the data you need.

For more information about defining filters, go to [Add Filter](#).

Snapshot schedule configuration

Snapshots capture security permission settings on SQL Server instances at configured intervals. At the scheduled time, a SQL Secure job is executed and data is collected from the SQL Server instance to the Repository database. This data set represents a single snapshot and is accessed directly by the SQL Secure Console. SQL Secure allows you to define when snapshots are taken.

You can specify these settings in the **Schedule** tab of the **Audited SQL Server Properties** window.

For more information of how to change the schedule collection time, go to [Schedule snapshots](#).



Scheduling snapshots

Consider taking snapshots on a routine, scheduled basis. Because snapshots are taken over time, they can be viewed to see when changes are made to user or object permissions.

Grooming Snapshots

Snapshots are managed through the grooming process. Grooming allows you to determine which snapshots should be deleted from the SQL Secure Repository. You can schedule grooming to occur on a routine basis, ensuring you keep only the snapshots you need. For more information, see [Set Snapshot Grooming](#).



Keep in mind

- Snapshots associated with saved assessments cannot be groomed.

- Snapshots that have been marked as baselines are not groomed

Mark a snapshot as a baseline

Baseline snapshots are snapshots that will not be deleted in the grooming process. To mark snapshots as baseline, you can right-click the snapshot and choose **Mark as Baseline**.

When a snapshot should be marked as baseline	Importance
When you take your first snapshot	To have a starting point to use to identify changes to permissions over time
At the end of the month, quarter, or year	To track compliance to your database security policies
When you implement a new security model	To identify unwanted changes or issues with the new model
When you notice problems or irregularities in permission settings in a snapshot	To analyze the issue to correct problems and change permissions settings



Viewing which snapshot is marked as baseline

To view which snapshot is marked as baseline, click the respective SQL Server. The **Audit History** section of the **Server Summary** properties displays a list of all snapshots in this server where you can find a **Baseline** column that informs you which snapshot is marked as a baseline and which ones are not.

Managing your snapshots

In addition to the setting above, you can perform the following actions with Snapshots.

- **Delete snapshots.** Right-click the respective snapshot (from the Audited SQL Servers tree or the **Audit History** of the **Server Summary**) and select **Delete Snapshot**.
- **Collect audit data manually.** Select **Take Snapshot Now** from the upper section of the **Snapshot Summary** or click the respective SQL Server, go to the **Snapshots** menu, and click the same option.

Resolve group names and group memberships across multiple domains

Using a single account to resolve group names and enumerate group memberships can be problematic when SQL Server grants permissions to accounts across multiple externally trusted domains.

In this situation, the server account specified on the Audited SQL Server Properties window should be an account that has been granted access to these external domains. This can be accomplished by either setting up two-way trusts between the account's domain and the external domains, or by creating pass-through accounts on all the external domains.

SQL Secure tells you who has access to what on your SQL Server databases. [Learn more >>](#)

IDERA Website	Products	Purchase	Support	Community	About Us	Resources	Legal
-------------------------------	--------------------------	--------------------------	-------------------------	---------------------------	--------------------------	---------------------------	-----------------------

View Windows accounts in snapshot

The IDERA SQL Secure **Windows Accounts** tab lists the collected Active Directory users and groups that have permissions on SQL Server objects such as database tables. This tab also displays the associated domain, account name, type, and access information for each account.

Difference between Windows and OS Windows accounts

Windows Accounts

Users and groups that have access to SQL Server objects, such as database tables, either through association with a SQL login or permissions inherited from group membership

OS Windows Accounts

Users and groups that have access to OS objects, such as registry keys or files, either through direct permission assignment or group membership

SQL Secure tells you who has access to what on your SQL Server databases. [Learn more > >](#)

IDERA Website	Products	Purchase	Support	Community	About Us	Resources	Legal
-------------------------------	--------------------------	--------------------------	-------------------------	---------------------------	--------------------------	---------------------------	-----------------------

View OS Windows accounts in snapshot

The IDERA SQL Secure **OS Windows Accounts** tab lists the collected Active Directory users and groups that have permissions on OS objects such as registry keys. This tab also displays the associated domain, account name, type, and access information for each account.

Difference between Windows and OS Windows accounts

Windows Accounts

Users and groups that have access to SQL Server objects, such as database tables, either through association with a SQL login or permissions inherited from group membership

OS Windows Accounts

Users and groups that have access to OS objects, such as registry keys or files, either through direct permission assignment or group membership

SQL Secure tells you who has access to what on your SQL Server databases. [Learn more > >](#)

IDERA Website	Products	Purchase	Support	Community	About Us	Resources	Legal
-------------------------------	--------------------------	--------------------------	-------------------------	---------------------------	--------------------------	---------------------------	-----------------------

Identify suspect Windows accounts

The IDERA SQL Secure **Suspect Windows Accounts** tab lists the Windows user accounts about which SQL Secure was unable to retrieve information when the snapshot was taken. Windows accounts are Active Directory users and groups that have permissions on SQL Server objects.

For each suspect account, the following information is available:

Column	Description
Domain	Lists the domain the suspect account resides in
Account	Lists the name of the account
Type	Lists the type of account that is suspect

Additionally, in this tab you can set any of the following options available in the upper right corner of this section:

Option	Description
Show group by box	Allows you to organize the list by the column headers
Save as Excel File	Allows you to save your suspect windows accounts list to an Excel file
Print	Allows you to print out your list



You can also click any column header and select to display All, Blanks, Non Blanks, or filter Custom criteria. For more information on how to add conditions to filter criteria for domain, click [here](#).

When SQL Secure considers an account suspect

A Windows account is considered suspect when SQL Secure cannot validate the account in Active Directory. Some common causes are:

- The user account has been deleted
- The collection credentials do not have sufficient permissions to access Active Directory
- A one-way trust exists between the domain of the collection credentials and the domain of the Windows account
- The account is a well-known group, such as Everyone or Terminal Server User, whose membership is hidden by Active Directory and therefore cannot be collected



You can use a pass-through account to successfully collect Windows account information when encountering one-way trusted domains. A pass-through account is an account that has the same name and password as the account specified for gathering group membership information. A pass-through account does not require elevated Windows privileges in the trusted domain. For more information, search for "pass-through account" on the [Microsoft Help and Support Web site \(support.microsoft.com\)](https://support.microsoft.com).

SQL Secure tells you who has access to what on your SQL Server databases. [Learn more >>](#)

IDERA Website	Products	Purchase	Support	Community	About Us	Resources	Legal
-------------------------------	--------------------------	--------------------------	-------------------------	---------------------------	--------------------------	---------------------------	-----------------------

Identify suspect OS Windows accounts

The IDERA SQL Secure **Suspect OS Windows Accounts** tab lists the Windows user accounts about which SQL Secure was unable to retrieve information when the snapshot was taken. OS Windows accounts are Active Directory users and groups that have permissions on OS objects such as registry keys.

For each suspect account, the following information is available:

Column	Description
Domain	Lists the domain the suspect account resides in
Account	Lists the name of the account
Type	Lists the type of account that is suspect

You can set one of the following options:

Option	Description
Group By	Allows you to organize the list by the column headers
Save as Excel File	Allows you to save your suspect windows accounts list to an Excel file
Print	Allows you to print out your list



You can also click any column header and select to display All, Blanks, Non Blanks, or filter Custom criteria. For more information on how to add conditions to filter criteria for domain, click [here](#).

When SQL Secure considers an account suspect

An OS Windows account is considered suspect when SQL Secure cannot validate the account in Active Directory. Some common causes are:

- The user account has been deleted
- The collection credentials do not have sufficient permissions to access Active Directory
- A one-way trust exists between the domain of the collection credentials and the domain of the Windows account
- The account is a well-known group, such as Everyone or Terminal Server User, whose membership is hidden by Active Directory and therefore cannot be collected



You can use a pass-through account to successfully collect Windows account information when encountering one-way trusted domains. A pass-through account is an account that has the same name and password as the account specified for gathering group membership information. A pass-through account does not require elevated Windows privileges in the trusted domain. For more information, search for "pass-through account" on the [Microsoft Help and Support Web site \(support.microsoft.com\)](https://support.microsoft.com).

SQL Secure tells you who has access to what on your SQL Server databases. [Learn more >>](#)

IDERA Website	Products	Purchase	Support	Community	About Us	Resources	Legal
-------------------------------	--------------------------	--------------------------	-------------------------	---------------------------	--------------------------	---------------------------	-----------------------

Identify unavailable databases

The IDERA SQL Secure **Unavailable Databases** tab lists the databases about which SQL Secure was unable to collect SQL Server security data.

SQL Secure displays one of the following status messages for each database listed:

Status Message	Description
Database is loading or exclusively locked	SQL Secure is unable to audit the database because it is either being backed up or has been otherwise locked.
Suspect	SQL Secure is unable to report any data on the database.
Not Accessible	SQL Secure is unable to access the database. This could be because the database has been moved or deleted.

You can use any of the following options available in the upper corner of this section:

Option	Description
Show group by box	This button allows you to organize the list by the column headers
Save as Excel File	This button allows you to save your suspect windows accounts list to an Excel file
Print	This button allows you to print out your list

SQL Secure tells you who has access to what on your SQL Server databases. [Learn more >>](#)

IDERA Website	Products	Purchase	Support	Community	About Us	Resources	Legal
-------------------------------	--------------------------	--------------------------	-------------------------	---------------------------	--------------------------	---------------------------	-----------------------

View filters for a snapshot

The IDERA SQL Secure **Filter** tab lists the collection filters that SQL Secure uses to collect audit data from your registered SQL Server instances and to create a snapshot. Each filter rule defines which data, such as permissions on user tables in a specific database, is collected and included in this snapshot. For more information about how filters work, see [Use Filters to Specify which Data is Collected](#).

SQL Secure tells you who has access to what on your SQL Server databases. [Learn more](#) > >

IDERA Website	Products	Purchase	Support	Community	About Us	Resources	Legal
-------------------------------	--------------------------	--------------------------	-------------------------	---------------------------	--------------------------	---------------------------	-----------------------

View snapshot properties

The IDERA SQL Secure **Snapshot Properties** window contains detailed information about your snapshot, including:

- Date and time audit data was collected, and the status
- Collection statistics
- How audit data was [filtered](#) during collection
- Listing of any [suspect Windows accounts](#) or [unavailable databases](#)

Access the Snapshot Properties window

You can access the **Snapshot Properties** window by right-clicking a snapshot of the respective SQL Server under the Audited SQL Servers tree of the **Explore Permissions** view.

You can also access this window by clicking the relevant SQL Server, going to the **Audit History** section of the **Server Summary**, and right-clicking the respective Snapshot.

SQL Secure tells you who has access to what on your SQL Server databases. [Learn more > >](#)

IDERA Website	Products	Purchase	Support	Community	About Us	Resources	Legal
-------------------------------	--------------------------	--------------------------	-------------------------	---------------------------	--------------------------	---------------------------	-----------------------

Assess Your Security Model

The IDERA SQL Secure **Security Summary** view allows you to check the status of your security policies at the enterprise and SQL Server instance levels. This view includes the overall policy status, a security report card that lists security risks, the settings of each of your SQL Server instances, and the associated user accounts.

Information available at the enterprise level

To view the **Security Summary** view at the enterprise-level, make sure you click **All Servers** in the Policy tree. This view includes the following enterprise-level information:

Summary tab

Policy Status

Displays the number of [security risks associated with the selected policy](#) and a break down of the risk levels.

Enterprise Security Report Card

Displays the [risks found on all SQL Server instances](#) assigned to the selected policy.

Server Summary

Displays the summary of SQL Servers included in the selected policy with statistics of the number of High, Medium, and Low Risks.

Settings tab

Allows you to [view and compare general and security-related settings](#) across your SQL Server instances.

Users tab

Lists the [user accounts and account settings](#) for the SQL Server instances assigned to the selected policy.

Information available the server level

To view the **Security Summary** view at a server-level, make sure you click the respective SQL Server in the left tree. This view includes the following server-level information:

Summary tab

Server Status

Displays the [number of security risks found](#) by your policy on the selected SQL Server instance.

Server Security Report Card

Displays all [risks discovered on a specific SQL Server instance](#) assigned to the selected policy.

SQL Server Info

Displays the main information of the selected SQL Server such as name, when last data was collected, version, edition, and Windows OS.

Settings tab

Lists the [general and security-related settings](#) for your SQL Server instance.

Users tab


Lists the [user accounts and account settings](#) for the associated SQL Server instance.

SQL Secure tells you who has access to what on your SQL Server databases. [Learn more > >](#)

IDERA Website	Products	Purchase	Support	Community	About Us	Resources	Legal
-------------------------------	--------------------------	--------------------------	-------------------------	---------------------------	--------------------------	---------------------------	-----------------------

Analyze enterprise security

The IDERA SQL Secure Enterprise **Security Summary** displays the status of your security policies at the enterprise level. By default, SQL Secure displays the **All Servers** policy assessment.

 By default, the **All Servers** policy enforces the IDERA Level 2 - Balanced template. For more information, see how [policy templates](#) can help you achieve your SQL Server security goals.

To see the Enterprise **Security Summary** for a specific policy, select the policy from the Policies tree on the Security Summary view. The following information is available from the Enterprise Security Summary:

- [Enterprise Security Report Card](#)
- [Enterprise Security Settings](#)
- [Enterprise Security Users](#)

SQL Secure tells you who has access to what on your SQL Server databases. [Learn more > >](#)

IDERA Website	Products	Purchase	Support	Community	About Us	Resources	Legal
-------------------------------	--------------------------	--------------------------	-------------------------	---------------------------	--------------------------	---------------------------	-----------------------

View Enterprise Report Card

Through the IDERA SQL Secure **Security Summary** view you can see the **Enterprise Report Card** for a selected policy. For this purpose click the respective policy in the Policies tree and in the **Summary** tab you can see this report card.

The **Enterprise Security Report Card** lists the security check findings for all SQL Server instances that have been assigned to the selected policy.

The default view of the **Enterprise Security Report Card** displays all the associated security findings, from highest to lowest risk, as configured in your policy. You can select security risk categories along the left side of the report card to filter the report card accordingly.

The **Enterprise Security Report Card** lists the number of security check violations found along with the level of risks associated with these findings. This status includes findings for all servers associated with the selected policy.



You can choose which columns to display on this list, group by columns, save the information, and print it, by going to the menu grid located on the top right section.

In addition to the **Summary** tab, the following tabs can provide detailed information on the associated risks:

Settings

The [Settings tab](#) lists the detailed SQL Server settings associated with the SQL Server instances assigned to your policy.

Users

The [Users tab](#) lists the security settings of the SQL Server logins and Windows accounts associated with the SQL Server instances assigned to your policy.

SQL Secure tells you who has access to what on your SQL Server databases. [Learn more >>](#)

IDERA Website	Products	Purchase	Support	Community	About Us	Resources	Legal
-------------------------------	--------------------------	--------------------------	-------------------------	---------------------------	--------------------------	---------------------------	-----------------------

View settings across all servers

The IDERA SQL Secure Security Summary view allows you to see the Settings for a selected policy. For this purpose click the respective policy in the Policies tree, then go to the **Settings** tab.

The **Settings** tab lists the security settings collected for all SQL Server instances associated with this policy. By default, SQL Secure sorts this data **By Setting** which you can change to **By Server** in the grid menu bar located on the top right section.

When you double-click a specific SQL Server instance from the **Servers in Policy** tree, SQL Secure displays the individual **Settings** tab for the selected instance.



You can choose which columns to display on this list, group by columns, save the information, and print it, by going to the menu grid located on the top right section.

SQL Secure tells you who has access to what on your SQL Server databases. [Learn more > >](#)

IDERA Website	Products	Purchase	Support	Community	About Us	Resources	Legal
-------------------------------	--------------------------	--------------------------	-------------------------	---------------------------	--------------------------	---------------------------	-----------------------

View user security across all servers

The IDERA SQL Secure **Security Summary** view allows you to see the **Users** for a selected policy. For this purpose click the respective policy in the Policies tree, then go to the **Users** tab.

The **Users** tab allows you to view all the user accounts associated with the SQL Server instances assigned to the selected policy.



You can right-click on a particular user account row and select **Show Permissions** to explore user permissions and see more detailed security information about the selected account.

Information displayed on the Users tab

The following information is displayed on the **Users** tab:

Login Name

The full login name of the associated account

SQL Server

Name of the SQL Server instance the login is associated with

Type

Login permission type (Windows Group or SQL Login)

Server Access

Whether or not the user has access on the SQL Server instance

Server Deny

Whether or not the user is denied access to the SQL Server instance

Disabled

Whether or not the user account is disabled

Expiration Checked

Whether or not the password expiration is checked

Policy Checked

Whether or not the associated policy is checked for this user account

Password Health

Whether or not the password associated with the account is considered weak. You can configure [how SQL Secure detects weak passwords](#). Possible password health states include:

Password health state	What it means
Blank	The password for this login is either blank or null, which means no password is required for authentication or successful connection to databases hosted by your audited SQL Server instances.
Matches login name	The password for this login matches the name of the login.
N/A	The password for this login was not checked, most likely because the login is a Windows user account.
OK	This login most likely has a strong password because the password does not match any of the words and phrases in the Default Weak Passwords list or the additional and custom passwords you specified.
Weak	The password for this login matches one or more of the words and phrases in the Default Weak Passwords list or the additional and custom passwords you specified.

Default Language

The language that is set as the default for the user account

Default Database

The database that this login connects to and queries when no other database is specified



You can choose which columns to display on this list, group by columns, save the information, and print it, by going to the menu grid located on the top right section.

SQL Secure tells you who has access to what on your SQL Server databases. [Learn more > >](#)

IDERA Website	Products	Purchase	Support	Community	About Us	Resources	Legal
--------------------------	-----------------	-----------------	----------------	------------------	-----------------	------------------	--------------

Analyze server security

The IDERA SQL Secure **Security Summary** view displays the status of your security policies at the instance level. To see the Server Security Summary for a policy, expand the corresponding policy node in **Servers in Policy** tree, and then select the target SQL Server instance.

The following tabs are available from the Server Security Summary:

- [Server Security Report Card](#)
- [Server Security Settings](#)
- [Server Security Users](#)

SQL Secure tells you who has access to what on your SQL Server databases. [Learn more > >](#)

IDERA Website	Products	Purchase	Support	Community	About Us	Resources	Legal
-------------------------------	--------------------------	--------------------------	-------------------------	---------------------------	--------------------------	---------------------------	-----------------------

View Server Report Card

To view the IDERA SQL Secure **Server Security Report Card** for a specific SQL Server instance, go to the **Security Summary** view, and then select the respective instance from the **Servers in Policy** tree, SQL Secure displays this report card in the **Summary** tab.

The **Server Security Report Card** lists the security checks evaluated for the selected SQL Server instance.

The default view of this report card displays all the associated security findings, from highest to lowest risk, as configured in your policy. You can select security risk categories along the left side of the report card to filter the report card accordingly.

The **Server Status** section lists the number of security check violations found along with the level of risk associated with these findings. This status reflects the findings for the selected instance only.

The **SQL Server Info** section displays the most important information for the selected instance like the time when the audit data was collected, the version, edition, and Windows OS on the respective instance.



You can choose which columns to display on this list, group by columns, save the information, and print it, by going to the menu grid located on the top right section.

Get more information on discovered risks

The following tabs of SQL Secure can provide detailed information on the associated risks:

Settings

The [Settings](#) tab lists the detailed SQL Server settings associated with the selected SQL Server instance.

Users

The [Users](#) tab lists the SQL Server logins and Windows accounts associated with the SQL Server instance.

SQL Secure tells you who has access to what on your SQL Server databases. [Learn more > >](#)

IDERA Website	Products	Purchase	Support	Community	About Us	Resources	Legal
-------------------------------	--------------------------	--------------------------	-------------------------	---------------------------	--------------------------	---------------------------	-----------------------

View settings on this instance

To view the settings for a specific SQL Server instance in IDERA SQL Secure, go to the **Security Summary** view, select the respective instance from the **Servers in Policy** tree, then go to the **Settings** tab.

The **Settings** tab lists the security settings collected for the selected SQL Server instance. By default, SQL Secure sorts this data by setting name. To sort by instance name, click **By Server** in the grid menu bar located in the upper right section.



You can choose which columns to display on this list, group by columns, save the information, and print it, by going to the menu grid located on the top right section.

SQL Secure tells you who has access to what on your SQL Server databases. [Learn more >>](#)

IDERA Website	Products	Purchase	Support	Community	About Us	Resources	Legal
--------------------------	-----------------	-----------------	----------------	------------------	-----------------	------------------	--------------

View user security on this instance

To view the users for a specific SQL Server instance in IDERA SQL Secure, go to the **Security Summary** view, select the respective instance from the **Servers in Policy** tree, and then go to the **Users** tab.

The **Users** tab allows you to view all the user accounts associated with the selected SQL Server instance.



You can right-click on a particular user account row and select **Show Permissions** to explore user permissions and see more detailed security information about the selected account.

The following information is displayed on the **Users** tab:

Login Name

The full login name of the associated account

Type

Type of login (SQL Login, Windows User, Windows Group, and Certificate Mapped Login)

Server Access

Whether or not the user has access on the SQL Server instance

Server Deny

Whether or not the user has denied access to the SQL Server instance

Disabled

Whether or not the user account is disabled

Expiration Checked

Whether or not the password expiration is checked

Policy Checked

Whether or not the associated policy is checked for this user account

Password Health

Whether or not the password associated with the account is considered weak. You can configure how [SQL Secure detects weak passwords](#). Possible password health states include:

Password health result	What it means
Blank	The password for this login is either blank or null, which means no password is required for authentication or successful connection to databases hosted by your audited SQL Server instances.
Matches login name	The password for this login matches the name of the login.
N/A	The password for this login was not checked, most likely because either the login is a Windows user account or weak password detection is disabled.
OK	This login most likely has a strong password because the password does not match any of the words and phrases in the Default Weak Passwords list or the additional and custom passwords you specified.
Weak	The password for this login matches one or more of the words and phrases in the Default Weak Passwords list or the additional and custom passwords you specified.

Default Language

The language that is set as the default for the user account

Default Database

The database that this login connects to and queries when no other database is specified



You can choose which columns to display on this list, group by columns, save the information, and print it, by going to the menu grid

located on the top right section.

SQL Secure tells you who has access to what on your SQL Server databases. [Learn more > >](#)

IDERA Website	Products	Purchase	Support	Community	About Us	Resources	Legal
--------------------------	-----------------	-----------------	----------------	------------------	-----------------	------------------	--------------

Define policies for custom assessments

Policies are security standards implemented to monitor specific risks on one or more SQL Server instances. IDERA SQL Secure uses policies to assess your SQL Server security models by performing specific security checks. Each security check has a default value and associated risk level based on known industry regulations and best-practices. You can add, remove, or edit security checks in any policy.

Once a policy is configured, SQL Secure examines your audit data and displays any found risks in the **Security Summary** view. You can create multiple security policies, allowing you the flexibility to have several different standards that cover the varying security needs of your environment. Consider using the built-in [policy templates](#) to create policies that enforce industry standards and best-practice security guidelines.



You can configure SQL Secure to send email notifications as security risks are found. For example, you can receive notifications when high and medium risks are found. For more information, see [Email Notifications](#).

You can perform the following actions:

- [Create Policies](#)
- [Edit Policy Settings](#)
- [Import Policies](#)
- [Export Policies](#)

SQL Secure tells you who has access to what on your SQL Server databases. [Learn more >>](#)

IDERA Website	Products	Purchase	Support	Community	About Us	Resources	Legal
-------------------------------	--------------------------	--------------------------	-------------------------	---------------------------	--------------------------	---------------------------	-----------------------

Use policy templates to harden your security model

You can use the IDERA and industry standard policy templates built in to IDERA SQL Secure to further harden your SQL Server security model. By creating policies from these templates, you can enforce consistent security settings across your enterprise and proactively assess when and where vulnerabilities exist. You can also customize new policies based on these templates to further address your specific security needs.

Consider using policy templates when you:

- Must enforce an industry standard such as CIS, SRR, HIPAA, or PCI
- Need a more robust and comprehensive assessment of your security model than what Microsoft Best Practices can offer

Available templates

Idera Level 1 - Basic Protection

Establishes a realistic entry-level baseline for SQL Server databases whose third-party applications do not interface with the World Wide Web. This template enforces MSBPA guidelines as well as additional security checks for logins, permissions, and other vulnerabilities.

Idera Level 2 - Balanced Protection

Establishes a more secure baseline for production SQL Server databases that are configured to support external connectivity while protecting against the most popular intrusion tactics. This template combines the CIS and MSBPA guidelines as well as additional security checks for permissions, configurations, and other vulnerabilities.

Idera Level 3 - Strong Protection

Enables the maximum security checks for mission-critical SQL Server databases that support Web-based, B2B, B2C, or external clients to prevent unauthorized disclosure and data tampering. This template combines Idera Level 1 and Level 2 guidelines with SRR regulations. Also included are additional security checks for auditing, permissions, surface area configurations, and other vulnerabilities.

CIS for SQL Server 2000

Enforces security check settings derived from the Center for Internet Security - Security Configuration Benchmark for Microsoft SQL Server 2000, V 1.0, December, 2005.

CIS for SQL Server 2005 or later

Enforces security check settings derived from the Center for Internet Security - Security Configuration Benchmark for Microsoft SQL Server 2005, V 1.2.0, January 12, 2010. This version can also be applied to SQL Server 2008 and later.

HIPAA Guidelines for SQL Server

Leverages the Health Insurance Portability and Accountability Act (HIPAA) guideline as well as the Department of Defense Database Security Technical Implementation Guide (STIG) version 8 release 1.7. These guidelines target conditions that undermine the integrity of security, contribute to inefficient security operations and administration, or may lead to interruption of production operations for health information that resides on Microsoft SQL Server.

MS Best Practices Analyzer

Enforces security check settings derived from the Microsoft SQL Server 2005 Best Practices Analyzer Security Recommendations.

PCI 2.0 Guidelines for SQL Server

Enforces security check settings derived from the Payment Card Industry (PCI) v2.0 regulatory standard. This standard applies to mission-critical databases hosted by internal or external services that store payment card information.

SNAC for SQL 2000

Enforces security check settings derived from the Guide to the Secure Configuration and Administration of Microsoft SQL Server 2000, Network Applications Team of the Systems and Network Attack Center (SNAC).

SRR Checklist for SQL Server 2000

Enforces security check settings derived from the DISA for a security readiness review (SRR) of a Microsoft SQL Server RDBMS installed in a Windows NT or Windows 2000 host operation system environment.

SRR Checklist for SQL Server 2005 or later

Enforces security check settings derived from the Database Security Readiness Review (SRR) v8 r1.7. This SRR targets conditions that undermine the integrity of security, contribute to inefficient security operations and administration, and may lead to interruption of production operations. This version can also be applied to SQL Server 2008 and later.

Select a template

Use the industry standard policy templates, such as the CIS for SQL Server 2005 template, when your environment needs to meet the exact

security criteria defined by that regulatory organization. However, your environment may contain SQL Server instances that only need to follow your corporate security policies. In those cases, you can create new or enhance existing corporate policies based on the built-in Idera security level templates.

The Idera Level 1, Level 2, and Level 3 templates allow you to mature your SQL Server security model over time, graduating from a solid baseline to an intermediate level to a more advanced and hardened approach. Each level is based on regulatory models and industry best-practices as well as additional security checks that identify vulnerabilities other standards do not address. The default **All Servers** policy enforces the Idera Level 2 - Balanced template.

Use the following table to determine which Idera security level template fits your current security needs and how your environment fits into the overall security maturation model.

Idera Level	Maturation Level	Security Level	Types of SQL Server Instances	Types of Business	Regulatory Model	Unique Security Checks
1 - Basic Protection	Beginner	Baseline	Test, development, and low-risk production instances	Services internal groups by hosting data for third-party applications and does not require connections to external clients	MSBPA plus additional checks	<ul style="list-style-type: none"> SA account has blank password Any SQL Server login has blank password Public server role has been granted permissions
2 - Balanced Protection	Intermediate	Medium	Average production instances	Services internal and external groups that require external connectivity to hosted data	CIS and MSBPA plus additional checks	<ul style="list-style-type: none"> Sysadmins own trustworthy databases Public server role has been granted permissions File permissions on executables are not acceptable SQL logins have weak passwords
3 - Strong Protection	Advanced	High	Mission-critical, sensitive, and high-risk production instances	Services internal and external groups by hosting data for Web-based, B2B, B2C, or external clients	CIS, MSBPA, and SRR, plus additional checks and auditing	<ul style="list-style-type: none"> Required administrative accounts do not exist xp_cmdshell proxy account exists SA account is not using password policy Public database role has unacceptable permissions SSIS database role and stored procedure permissions OS version is at acceptable level

SQL Secure tells you who has access to what on your SQL Server databases. [Learn more > >](#)

IDERA Website	Products	Purchase	Support	Community	About Us	Resources	Legal
--------------------------	-----------------	-----------------	----------------	------------------	-----------------	------------------	--------------

Add new policy

The **Create Policy** wizard allows you to add a custom policy to IDERA SQL Secure. As a part of this wizard, you will name the policy, select the security checks and their associated risk levels, assign the SQL Server instances you want to assess, and specify additional internal review notes to include in the Risk Assessment report. When you create a policy, you can choose one of the built-in templates based on known industry regulations and best-practices.

To open the **Create Policy** wizard, click **Create a Policy** on the Policy Actions ribbons of any of the tabs of the **Security Summary** view.



Individual SQL Server instances can belong to multiple security policies. For more information on adding SQL Server instances to a policy, see [Assign SQL Servers to Policy](#).

When you open the **Create Policy** wizard you need to configure the following actions:

- [Select policy template](#)
- [Specify policy properties](#)
- [Select Security Checks](#)
- [Assign SQL Servers to policy](#)
- [Enter internal review notes](#)
- [Review policy summary](#)

How policies work

By default, SQL Secure assesses the latest audit data for each SQL Server instance, using the policy's security check criteria to identify issues. You can also choose to assess audit data from a historical point in time.

Review the policy assessment in the following ways:

Security Summary

The [Enterprise and Server Security Summary](#) displays the results of your policy assessments.

Reports

You can [run reports](#), such as the Risk Assessment report, on the policy or on specific SQL Server instances.

Email Notifications

You can [configure email notifications](#) to be sent, at each scheduled snapshot, when security risks are encountered.

SQL Secure tells you who has access to what on your SQL Server databases. [Learn more >>](#)

IDERA Website	Products	Purchase	Support	Community	About Us	Resources	Legal
-------------------------------	--------------------------	--------------------------	-------------------------	---------------------------	--------------------------	---------------------------	-----------------------

Select policy template

When you open the **Create Policy** wizard in IDERA SQL Secure, the Welcome window of this wizard opens, click **Next** to access the first section: **Select the Policy Template**.

The **Select the Policy Template** section allows you to choose between:

- Create a new policy "from scratch"
- Base your policy on a built-in template

Policy templates are boilerplate policies whose security check definitions reflect known industry regulations and security best-practices. Although, you may choose to start with a template, you can later add, edit, or remove security checks as needed. For more information, see how [policy templates](#) can help you achieve your SQL Server security goals.

You can also create policy templates by exporting configuration settings from a specific policy to an XML file. Then, you can later reuse these settings by creating new policies based on this template. For more information, see [Import Policy](#).

Click **Next** to go to the [Name the Policy](#) section.

[SQL Secure](#) tells you who has access to what on your SQL Server databases. [Learn more > >](#)

IDERA Website	Products	Purchase	Support	Community	About Us	Resources	Legal
-------------------------------	--------------------------	--------------------------	-------------------------	---------------------------	--------------------------	---------------------------	-----------------------

Specify policy properties

The **Name the Policy** section allows you to give your policy a name and a description. It is important to give your policies easily identifiable names and provide descriptions that help you select the appropriate policy during audits. The policy name and description can be changed later using the [Policy Properties](#) window.

Click **Next** to go to the [Configure the Policy](#) Section.

[SQL Secure](#) tells you who has access to what on your SQL Server databases. [Learn more > >](#)

IDERA Website	Products	Purchase	Support	Community	About Us	Resources	Legal
-------------------------------	--------------------------	--------------------------	-------------------------	---------------------------	--------------------------	---------------------------	-----------------------

Select security checks

The **Configure the Policy** section allows you to define the security checks this policy should use to evaluate your audit data.

Security checks assess the vulnerability of specific Windows OS and SQL Server objects based on your criteria. After security checks are configured and your SQL Server instances are assigned to the policy, you can view the assessment results on the **Security Summary** view and on the **Risk Assessment** report.

In addition, you can configure email notifications to be sent out when a particular risk level has been passed. For more information, see [Configure Email Notifications](#).



When security checks are setup for your policies, it is important that accurate criteria is entered. For example, a typo in the Windows Operating System Version metric criteria could cause erroneous findings.

Configure check settings

When you select security checks, you can configure the check settings on the right side of this window. Below the **Name** and **Description** of the respective security check you can find the following fields:

Report Text

This text displays on your policy reports, such as the **Risk Assessment** report. By default, SQL Secure provides a report text question for each security check. You can edit this question to better fit it to your audit reporting needs.

For example, the Protocols security check includes the report text "Are unexpected Protocols enabled?". If unexpected protocols are enabled, the report displays this question as well as the SQL Server instances on which the vulnerability was found.

External Cross Reference

This field allows you to cross reference a security vulnerability included in your report to a number or name contained in an external security standard, such as a specific HIPAA regulation.

Risk Level

This option allows you to set the severity of the risk for this security check finding. The risk level is important because it reflects how severe or risky a particular security finding is for your environment, allowing you to further customize security checks to meet your exact auditing needs. For example, finding an enabled Guest account on one instance may be a high risk, but on another instance it may be a low risk. The risk level also determines where the corresponding security finding appears on the policy or assessment Report Card and whether or not email notifications will be sent.

Criteria

Some security checks allow you to configure the assessment criteria, such as specific user accounts, stored procedures, or the login audit level. Text entered in this field must use the exact spelling of the object being checked. Use the option **Edit** and a new window opens where you can specify multiple criteria items (one per line). To delete any previous specified criteria, click the corresponding item, and then **Remove**.



If criteria for security checks is entered incorrectly, it may fail to correctly display its finding in the Report Card.



Some security check criteria support using the percent wildcard character (%) to specify objects whose names apply a naming convention. For example, to specify all users whose logon starts with `sql`, enter the following syntax: `domain\sql%`.

Even though you are creating a policy "from scratch", SQL Secure has enabled several common security checks you may need, to help you configure your policy quickly and easily. These security checks are also included in the default **All Servers** policy. You can add, edit, or disable any security check as needed.



By default, the **All Servers** policy enforces the Idera Level 2 - Balanced template. For more information, see how [policy templates](#) can help you achieve your SQL Server security goals.

The **Import Settings** option allows you to import security check definitions from either a built-in policy template or an existing policy whose settings you previously exported.

Click **Next** to go to the [Assign SQL Servers to the Policy](#) section.

SQL Secure tells you who has access to what on your SQL Server databases. [Learn more > >](#)

IDERA Website	Products	Purchase	Support	Community	About Us	Resources	Legal
-------------------------------	--------------------------	--------------------------	-------------------------	---------------------------	--------------------------	---------------------------	-----------------------

Assign SQL Servers to Policy

The **Assign SQL Servers to the Policy** window allows you to choose the registered SQL Server instances you want to audit and add them to the policy you are creating. Each registered SQL Server instance can belong to multiple policies.

To select SQL Server instances you can select from the options that group SQL Server versions or choose **Select SQL Server instances** and check those specific instances you want to include.



You can use **Audited SQL Servers** tab of the **Policy Properties** window to change which instances belong to this policy. For more information, see [Audited SQL Servers](#).

Click **Next** to go to the [Internal Review Notes](#)

SQL Secure tells you who has access to what on your SQL Server databases. [Learn more > >](#)

IDERA Website	Products	Purchase	Support	Community	About Us	Resources	Legal
-------------------------------	--------------------------	--------------------------	-------------------------	---------------------------	--------------------------	---------------------------	-----------------------

Enter Internal Review Notes

Use the **Internal Review Notes** section to specify text or questions that IDERA SQL Secure should include in your Risk Assessment and Assessment Comparison reports. These notes can serve as a questionnaire to be used for manually gathering additional data that may be required in your assessment.



You can use the option **Check Spelling** to make sure the information displayed on your report is well written.

Click **Next** to go to the [Completing SQL Secure New Policy Wizard](#) section.

[SQL Secure](#) tells you who has access to what on your SQL Server databases. [Learn more > >](#)

IDERA Website	Products	Purchase	Support	Community	About Us	Resources	Legal
-------------------------------	--------------------------	--------------------------	-------------------------	---------------------------	--------------------------	---------------------------	-----------------------

Review policy summary

The **Completing SQL Secure New Policy Wizard** section lists all the details of the policy you are creating. Click **Finish** to add your policy to IDERA SQL Secure. Your new policy will now display in the Policies tree on the **Security Summary** view where you can see the assigned SQL Server instances and determine their compliance with your policy.

SQL Secure tells you who has access to what on your SQL Server databases. [Learn more > >](#)

IDERA Website	Products	Purchase	Support	Community	About Us	Resources	Legal
-------------------------------	--------------------------	--------------------------	-------------------------	---------------------------	--------------------------	---------------------------	-----------------------

Edit policy settings

The **Policy Properties** window allows you to quickly edit your policy settings. Changes made on the **Policy Properties** window are instantly applied to your policy.

In the **Security Summary** view you can open the **Policy Properties** window by using any of the following options:

- Right-click your policy from the Policies tree and select **Properties**
- Select your policy and click **Edit settings** in the ribbon options available at any of the tabs (Summary, Settings, Users)

The following windows are available on the **Policy Properties** window:

- [General Policy Settings](#)
- [Security Checks](#)
- [Audited SQL Servers](#)
- [Internal Review Notes](#)

SQL Secure tells you who has access to what on your SQL Server databases. [Learn more > >](#)

IDERA Website	Products	Purchase	Support	Community	About Us	Resources	Legal
-------------------------------	--------------------------	--------------------------	-------------------------	---------------------------	--------------------------	---------------------------	-----------------------

Change policy properties

The **General** tab of the **Policy Properties** window allows you to update the name and description of the selected policy. The policy name appears in the **Security Summary** view under the Policies tree.

SQL Secure tells you who has access to what on your SQL Server databases. [Learn more > >](#)

IDERA Website	Products	Purchase	Support	Community	About Us	Resources	Legal
--------------------------	-----------------	-----------------	----------------	------------------	-----------------	------------------	--------------

Change policy security checks

Security checks assess the vulnerability of specific Windows OS and SQL Server objects based on your criteria. After security checks are configured and your SQL Server instances are assigned to the policy, you can view the results on the Security Overview window and on the Risk Assessment Report.

In addition, you can configure email notifications to be sent out when a particular risk level has been passed. For more information, see [Configure Email Settings](#).



When security checks are setup for your policies, it is important that accurate criteria is entered. For example, a typo in the Windows Operating System Version metric criteria could cause erroneous findings.

Available fields

The **Security Checks** of the **Policy Properties** tab allows you to update the following fields:

Criteria

Some security checks allow you to configure the assessment criteria, such as specific user accounts, stored procedures, or the login audit level. Text entered in this field must use the exact spelling of the object being checked. Use the option **Edit** and a new window opens where you can specify multiple criteria items (one per line). To delete any previous specified criteria, click the corresponding item, and then **Remove**.



If criteria for security checks is entered incorrectly, it may fail to correctly display its finding in the Report Card.



Some security check criteria support using the percent wildcard character (%) to specify objects whose names apply a naming convention. For example, to specify all users whose logon starts with sql, enter the following syntax: domain\sql% .

External Cross Reference

Allows you to cross reference a security vulnerability included in your report to a number or name contained in an external security standard.

Report Text

The text entered in this field appears on your policy reports. For example, the Protocols security check includes the report text "Are unexpected Protocols enabled?". When unexpected protocols are enabled, the report displays the SQL Server instances where the risk is encountered.

Risk Level

Allows you to set the severity of the risk posed by this finding. The risk level is important because it reflects how severe or risky a particular security finding is for your environment, allowing you to further customize security checks to meet your exact auditing needs. For example, finding an enabled Guest account on one instance may be a high risk, but on another instance it may be a low risk. The risk level also determines where the corresponding security finding appears on the policy or assessment Report Card and whether or not email notifications will be sent.

SQL Secure tells you who has access to what on your SQL Server databases. [Learn more >>](#)

IDERA Website	Products	Purchase	Support	Community	About Us	Resources	Legal
-------------------------------	--------------------------	--------------------------	-------------------------	---------------------------	--------------------------	---------------------------	-----------------------

Change SQL Servers audited by policy

The **Audited SQL Servers** tab allows you to change which registered SQL Server instances are assigned to this policy. You can add or remove instances from this policy to better match your auditing needs. Each registered SQL Server instance can belong to multiple policies.

The **Audited SQL Servers** tab is located in the **Policy Properties** window.

Edit the instance list by either selecting one of the version-group options or by selecting instances specifically, and then click **OK**. SQL Secure automatically re-assesses the policy based on this new scope.

SQL Secure tells you who has access to what on your SQL Server databases. [Learn more > >](#)

IDERA Website	Products	Purchase	Support	Community	About Us	Resources	Legal
-------------------------------	--------------------------	--------------------------	-------------------------	---------------------------	--------------------------	---------------------------	-----------------------

Change Internal Review Notes in policy

The **Internal Review Notes** tab allows you to edit the manually-collected data applied to your policy. Manually-collected data is security information that cannot be gathered and assessed through IDERA SQL Secure.

You can find the **Internal Review Notes** tab in the **Policy Properties** window.

SQL Secure includes your Internal Review Notes to the Risk Assessment report, providing a fuller picture of your security status. These notes can also serve as a questionnaire to be used for manually gathering additional data that may be required to fully enforce your policy.

To edit these notes, click inside the provided text box and enter your changes.



You can use the **Check Spelling** option to make sure the text you typed in the Internal Review Notes is well written.

SQL Secure tells you who has access to what on your SQL Server databases. [Learn more >>](#)

IDERA Website	Products	Purchase	Support	Community	About Us	Resources	Legal
-------------------------------	--------------------------	--------------------------	-------------------------	---------------------------	--------------------------	---------------------------	-----------------------

Export policies

The **Export Policy** window allows you to save the currently selected policy as a template to base other policies on.

To export your policy follow these steps:

1. Select your policy from the Policies tree in the **Security Summary** view
2. Right-click and select **Export Policy**
3. SQL Secure opens the **Exporting Policy Security Checks** window where you can review which checks are enabled in your selected policy and which ones are selected for exporting. Edit the security checks you want to export in the Export column. Take into account that you cannot edit the settings of any security check. Click **OK**.
4. Browse to the desired location you want to store your policy template, type a file name, and click **Save**.

SQL Secure tells you who has access to what on your SQL Server databases. [Learn more >>](#)

IDERA Website	Products	Purchase	Support	Community	About Us	Resources	Legal
-------------------------------	--------------------------	--------------------------	-------------------------	---------------------------	--------------------------	---------------------------	-----------------------

Import policies

The **Import Policy** window allows you to choose to either add a policy template or to import a previously exported policy to the Policy tree. Once the policy is selected, you can configure the policy and select the SQL Server instances to add to the policy.

To import a policy follow these steps:

1. Right-click any section in the **Policies** tree of the **Security Summary** view and select **Import Policy**
2. The **Import Policy** window opens with the following options:
 - **Import from policy template** - Select this option if you want to import from a policy template. Click the template to import, then click **OK**. For more information, see how [policy templates](#) can help you achieve your SQL Server security goals.
 - **Import previously exported policy** - Select this option if you want to import a previously exported template. Click **Browse** to locate your policy template, click **Open**, and then **OK**.
3. Once you select the source for importing your policy (from policy template or previously exported policy) follow these steps:
 - In the **Importing Policy Security Checks** window, you can review in the Import column which security checks you want to import. Click **OK**.
 - The **Importing Policy** window opens where you can edit the properties of the policy (name, description), the security checks you want this policy to perform, specific settings for a security check, the SQL Server instances added to the policy, and the Internal Review Notes. For more information about the settings of a policy, go to [Add new policy](#). Take into account that you need to change the name of the selected policy to import a new one. Click **OK**.

SQL Secure tells you who has access to what on your SQL Server databases. [Learn more >>](#)

IDERA Website	Products	Purchase	Support	Community	About Us	Resources	Legal
-------------------------------	--------------------------	--------------------------	-------------------------	---------------------------	--------------------------	---------------------------	-----------------------

Policy assessments

By creating and comparing policy assessments, you can integrate your IDERA SQL Secure policies into your existing audit process. The recommended assessment workflow is:

1. [Save as draft](#).
2. [Publish assessment](#).
3. [Approve assessment](#).

Use saved assessments in an existing audit process

Your Audit Process Step	Corresponding Assessment Step
Prepare for upcoming audit.	Create a draft assessment from an existing policy or previously approved assessment.
Set up the security requirements requested by the auditors.	Update the draft assessments to address the audit requirements. You can change the security check settings , choose different audit data , and add or remove SQL Server instances .
Get your security status and findings.	Run the draft assessment using audit data from a specific point in time.
Identify differences from last time this audit was performed.	Compare the draft assessment to a previously approved assessment.
Distribute the assessment findings to an internal team to investigate any new violations or discrepancies.	Publish the assessment and distribute to the team. To distribute the assessment, run the Risk Assessment report , and then print or save the results.
Confirm that violations were fixed.	Take a new snapshot and then run the published assessment using your new audit data.
Document any discrepancies as known issues.	Add an explanation note for each security check finding that is a known issue.
Give assessment to auditors.	Run the Risk Assessment report , and then print or save the results.
Apply feedback from auditors.	Update the published assessment to address the auditors' feedback. You can change the security check settings , add or remove explanation notes , and change which instances are being audited .
Obtain "sign-off".	Approve the assessment.

SQL Secure tells you who has access to what on your SQL Server databases. [Learn more > >](#)

IDERA Website	Products	Purchase	Support	Community	About Us	Resources	Legal
-------------------------------	--------------------------	--------------------------	-------------------------	---------------------------	--------------------------	---------------------------	-----------------------

Save new assessment

Use the **Save as New Assessment** option to create a new assessment that uses the same audit data and settings of an existing assessment. Specify a unique name and description for this new assessment, and then click **OK**.

To **Save as New Assessment** use any of the following options

- Right-click an existing policy or assessment from the Policies tree of the **Security Summary** view. Select **Save as New Assessment**.
- Select an existing policy or assessment from the Policies tree of the **Security Summary** view. Click **Save as New Assessment** from the ribbon options of the **Summary** tab.

Both options open a new window where you have to specify the name for the new assessment and the description.



Consider using a name and description whose details will help you later when you refer back to this assessment.



Explanation notes associated with security checks in the selected assessment are not copied to the new assessment. To transfer notes from one assessment to another, [compare the assessment security checks](#) and then select which explanation notes you want to copy.

SQL Secure tells you who has access to what on your SQL Server databases. [Learn more >>](#)

IDERA Website	Products	Purchase	Support	Community	About Us	Resources	Legal
-------------------------------	--------------------------	--------------------------	-------------------------	---------------------------	--------------------------	---------------------------	-----------------------

Refresh audit data

Use the **Refresh Audit Data** option to change which audit data (snapshots) this assessment is using to perform the assigned security checks. Choosing a different set of audit data may alter the assessment findings. After you choose a new data set, IDERA SQL Secure updates the assessment.

Consider refreshing the audit data when:

- Your environment has changed and you need to re-run the assessment against the most recent audit data
- You have responded to a high or medium finding by adjusting a security setting in your environment and need to validate your change
- You want to run the same assessment against a point in time in the past, such as last week or last month

Baseline snapshots can be used as a guide about how your SQL Server security model should be configured. By running your policy against baseline snapshots only, you can test the thoroughness of this guide.

To change the audit data follow these steps:

- Select your assessment from the Policies tree of the **Security Summary** view.
- Click **Refresh Audit Data** from the ribbon options of the **Summary** tab, a new window opens.
- Specify the date until which the audit data will be taken into account. You can include a specific time by checking **Include Time**.
- Optionally, you can select to **Use Baseline snapshot data only**.
- You can choose to **View Selected Snapshots** to review the baseline snapshots that will be used for this assessment. This list includes all available snapshots that were collected up to the specified time period.
- Click **OK**.

SQL Secure tells you who has access to what on your SQL Server databases. [Learn more > >](#)

IDERA Website	Products	Purchase	Support	Community	About Us	Resources	Legal
--------------------------	-----------------	-----------------	----------------	------------------	-----------------	------------------	--------------

Edit Assessments

Edit the settings of your assessment by using the **Assessment Properties** window to change basic properties or how the assessment performs its security evaluation.

To access this window, click the respective assessment or policy on the Policies tree of the **Security Summary** view, then select **Edit Settings** from the ribbon options. You can also right-click the assessment and select **Properties** to access the same window.

You can edit in the following tabs:

- [General](#) - Edit properties, such as the description
- [Security Checks](#) - Choose different security checks
- [Audited SQL Servers](#) - Change which SQL Server instances are audited by this assessment
- [Internal Review Notes](#) - Edit the internal review notes associated with this assessment

SQL Secure tells you who has access to what on your SQL Server databases. [Learn more > >](#)

IDERA Website	Products	Purchase	Support	Community	About Us	Resources	Legal
-------------------------------	--------------------------	--------------------------	-------------------------	---------------------------	--------------------------	---------------------------	-----------------------

Change assessment properties

The **General** tab of the **Assessment Properties** window allows you to update the name and description of the selected assessment as well as any notes you want to provide.

The **Notes** field allows you to enter notes, questions, and other information about this assessment. Use these notes as a "cheat sheet" to remember details about your environment or security assessment from one audit to another. This approach ensures you gather all the data you need.

SQL Secure tells you who has access to what on your SQL Server databases. [Learn more > >](#)

IDERA Website	Products	Purchase	Support	Community	About Us	Resources	Legal
-------------------------------	--------------------------	--------------------------	-------------------------	---------------------------	--------------------------	---------------------------	-----------------------

Change assessment security checks

Security checks assess the vulnerability of specific Windows OS and SQL Server objects based on your criteria. The security checks performed by the selected assessment were copied from the policy associated with this assessment. You can modify the criteria of these checks to better fit your auditing needs for this assessment. Changes made to the assessment security checks will not affect the associated policy.

Available fields

You can update the following fields:

Report Text

The text entered in this field appears on your policy reports. For example, the Protocols security check includes the report text "Are unexpected Protocols enabled?". When unexpected protocols are enabled, the report displays the SQL Server instances where the risk is encountered.

External Cross Reference

Allows you to cross reference a security vulnerability included in your report to a number or label contained in an external policy, industry standard, or government regulation.

Risk Level

Allows you to set the severity of the risk posed by this finding. The risk level is important because it reflects how severe or risky a particular security finding is for your environment, allowing you to further customize security checks to meet your exact auditing needs. For example, finding an enabled Guest account on one instance may be a high risk, but on another instance it may be a low risk. The risk level also determines where the corresponding security finding appears on the policy or assessment Report Card and whether or not email notifications will be sent.

Criteria

Some security checks allow you to enter criteria the policy will check for, such as specific user accounts, stored procedures, or the login audit level. Text entered into these fields must be the exact spelling of the object or user being checked.



If the criteria for any given security check is entered incorrectly, the risk will appear in the Security Report Card. Select the risk and you can see the correct criteria names in the Details section. Open the Policy details window and enter the correct name on the Security Checks tab.



Some security check criteria support using the percent wildcard character (%) to specify objects whose names apply a naming convention. For example, to specify all users whose logon starts with sql, enter the following syntax: `domain\sql%`.

Any criteria you introduce, you can change it with the option **Edit**, or delete it by using **Remove**.

SQL Secure tells you who has access to what on your SQL Server databases. [Learn more > >](#)

IDERA Website	Products	Purchase	Support	Community	About Us	Resources	Legal
-------------------------------	--------------------------	--------------------------	-------------------------	---------------------------	--------------------------	---------------------------	-----------------------

Change SQL Servers audited by assessment

The **Audited SQL Servers** tab allows you to change which registered SQL Server instances are assigned to this assessment within IDERA SQL Secure. You can add or remove instances from this assessment to better match your current auditing needs. Each registered SQL Server instance can belong to multiple assessments.

Edit the instance list, and then click **OK**. SQL Secure automatically re-runs the assessment based on this new scope.

SQL Secure tells you who has access to what on your SQL Server databases. [Learn more > >](#)

IDERA Website	Products	Purchase	Support	Community	About Us	Resources	Legal
-------------------------------	--------------------------	--------------------------	-------------------------	---------------------------	--------------------------	---------------------------	-----------------------

Change Internal Review Notes in assessment

The **Internal Review Notes** tab allows you to edit the manually-collected data applied to your assessment. Manually-collected data is security information that cannot be gathered and assessed through IDERA SQL Secure.

SQL Secure adds your **Internal Review Notes** to the Risk Assessment report, providing a fuller picture of your assessment status. These notes can also serve as a questionnaire to be used for manually gathering additional data that may be required in your assessment.

To edit these notes, click inside the provided text box and enter your changes.

SQL Secure tells you who has access to what on your SQL Server databases. [Learn more > >](#)

IDERA Website	Products	Purchase	Support	Community	About Us	Resources	Legal
-------------------------------	--------------------------	--------------------------	-------------------------	---------------------------	--------------------------	---------------------------	-----------------------

Edit explanation notes

Use the **Edit Explanation Notes** option to add or change the explanation notes associated with a selected security check. You can specify a different explanation note for each finding on each affected SQL Server instance.

Explanation notes let you clarify why a specific finding has been found. For example, you may need to justify why a high or medium risk finding should be ignored due to a special configuration or need in your environment.

To use this option, go to your respective assessment in the **Security Summary** view, click a security check on your **Server Security Report Card**, and then click **Edit Explanation Notes** on the ribbon options of the **Summary** tab. A new window opens for the selected security check where you can choose to mark the check as **Explained** and/or type **Notes**.

When a finding is marked as **Explained**, SQL Secure regards the finding as "ok" and changes the status of the security check in the assessment report card. **If you do not want the finding to be regarded as "ok"**, enter the appropriate note but leave the **Explained** option unchecked.



You can copy explanation notes from one assessment to another when you [compare the assessment security checks](#).

Available fields

When the **Edit Explanation Notes** window is opened, the following fields are available:

Server

Provides the name of the SQL Server instance on which the security check found a violation.

Risk

Provides the level of risk set for this security check (high, medium, or low).

Explained

Indicates whether this security check finding has been explained for the specified instance.

Notes

Displays the note that has been entered about each finding, per each affected SQL Server instance.

SQL Secure tells you who has access to what on your SQL Server databases. [Learn more >>](#)

IDERA Website	Products	Purchase	Support	Community	About Us	Resources	Legal
-------------------------------	--------------------------	--------------------------	-------------------------	---------------------------	--------------------------	---------------------------	-----------------------

Working with draft assessments

Use draft assessments to fine-tune your data and settings when you begin your audit process. A draft assessment represents the first step, or stage, in the audit process. Draft assessments typically contain your initial findings, including any discrepancies that should be investigated before your review.

When you save a new assessment, it is automatically set to draft mode. You can update and change draft assessments as often as you want. However, changes made in draft mode are not tracked. For more information about how to use saved assessments in your audit process, see [Save Assessments](#).

Use the draft mode to set up your assessment configuration settings to reflect the goals and requirements of your upcoming audit, identify discrepancies, and obtain internal feedback on your findings.

Available actions and tasks for Draft Assessments

The following options are available for draft assessments. You can find these options in the ribbon menu options of the **Summary** tab of your draft assessment. Most of these options are also available by right-clicking the assessment in the Policies tree of the **Security Summary** view.

Edit or View Assessment Settings

Allows you to edit or view the configuration settings for the draft assessment, such as the security checks the assessment performs. Go to [Edit Assessments](#) for more information and to view what settings you can change.



If your SQL Secure login does not have administrator permissions, you can only view assessment settings.

Refresh Audit Data

Allows you to re-run this assessment using different audit data (up to a specific point in time). Go to [Refresh Audit Data](#) for more information.

Publish Assessment

Allows you to publish this assessment. Publishing an assessment lets you safely distribute your findings and explanation notes. When an assessment is published, SQL Secure begins tracking each subsequent change applied to the assessment. Go to [Working with published assessments](#) for more information.

Use the [Change Log](#) tab to review this activity and ensure your audit data and resultant assessment is correct and accurate, and validate any updates.

Publish a draft assessment when it is ready for internal or external review by the audit team.

Save as New Assessment

Allows you to create a new assessment that uses the same settings and audit data as the selected assessment. When you save a new assessment, SQL Secure lists the assessment in the **Draft Assessment** folder under the associated policy in the Policies tree. Go to [Save new assessment](#) for more information.

Compare Assessments

Allows you to compare the findings and settings of a draft assessment against another saved assessment or the original policy. You can compare different types of assessments (draft, published, or approved). When you compare assessments against the original policy from which it was saved, you can identify changes that have occurred since the assessment had been saved. For more information, go to [Compare Assessments](#).

Remove from Assessment

Removes the selected SQL Server instance from the assessment. This option is available when you have selected a registered instance from the **Servers in Policy** tree.

Remove Assessment

Permanently deletes the selected assessment from the SQL Secure Repository.

SQL Secure tells you who has access to what on your SQL Server databases. [Learn more >>](#)

IDERA Website	Products	Purchase	Support	Community	About Us	Resources	Legal
-------------------------------	--------------------------	--------------------------	-------------------------	---------------------------	--------------------------	---------------------------	-----------------------

Working with published assessments

Use published assessments to apprise internal or external auditors of your security status and settings. A published assessment represents the review phase of your audit process. Published assessments typically contain the required security checks and an accurate security status for your audited instances, as well as any explanation notes regarding known violations or discrepancies.

When you publish an assessment, it is automatically set to the published mode. IDERA SQL Secure begins tracking each subsequent change applied to the assessment. Use the [Change Log](#) tab to review this activity.

Use the published mode to create and maintain a historical electronic trail of change activity, ensuring you can validate and document when, how, and why changes were made.

Approve a published assessment

Approving an assessment lets you safely archive your assessment for future reference. An approved assessment proves you are in compliance with specific corporate and government regulations, and have successfully completed an audit. For each subsequent audit, you can [start \(save\) a new assessment](#) using the approved assessment as a template.

Approve an assessment when the internal or external audit team has "signed off" on your assessment and it is ready to be archived. Approved assessments accurately represent your security status at a specific point in time and no longer require changes.

Actions and Tasks for Published Assessments

The following options are available in the ribbon menu options of the **Summary** tab of your published assessment.

Edit or View Assessment Settings

Allows you to edit or view the configuration settings for the published assessment, such as the security checks the assessment performs. Any changes performed to the assessment settings will be recorded in the [change log](#).



If your SQL Secure login does not have administrator permissions , you can only view assessment settings.

Refresh Audit Data

Allows you to re-run this assessment using different audit data (up to a specific point in time). Each time you refresh the audit data, SQL Secure registers the action in the [Change Log](#).

Approve

Allows you to approve this assessment. Approving an assessment lets you safely archive a final version of this assessment, preserving your findings and explanation notes. When an assessment is approved, SQL Secure locks the assessment, preventing you from changing or deleting the assessment settings as well as the associated audit data. However, you can manually add or remove notes about an approved assessment by editing the **Notes** field on the [Assessment Properties](#) window. You can also continue to use the [Change Log](#) tab to review activity that previously occurred on this assessment.

Save as New Assessment

Allows you to create a new assessment that uses the same settings and audit data as the selected published assessment. When you save a new assessment, SQL Secure lists the assessment in the **Draft Assessment** folder under the associated policy in the Policies tree.

Compare Assessments

Allows you to compare the findings and settings of the published assessment against another saved assessment or the original policy. You can compare different types of assessments (draft, published, or approved). When you compare this assessment against the original policy from which it was saved, you can identify changes that have occurred since the assessment had been saved.

Remove from Assessment

Removes the selected SQL Server instance from the assessment. This option is available when you have selected a registered instance from the **Servers in Policy** tree.

Remove Assessment

Permanently deletes the selected assessment from the SQL Secure Repository.

SQL Secure tells you who has access to what on your SQL Server databases. [Learn more > >](#)

IDERA Website	Products	Purchase	Support	Community	About Us	Resources	Legal
-------------------------------	--------------------------	--------------------------	-------------------------	---------------------------	--------------------------	---------------------------	-----------------------

View assessment change log

The **Change Log** tab lists all changes that have been made to the selected published assessment. After you publish an assessment, IDERA SQL Secure begins tracking any change that has been made to the assessment's settings. These changes may include the addition or removal of audited instances as well modifications to the security checks to be performed by the assessment.

The change log gives you an electronic, "paper trail" that documents exactly how a published assessment is being processed during an internal or external audit review.

Available actions and fields at the Change Log tab

In the **Change Log** tab you have the following available actions:

Edit or View Assessment Settings

Allows you to edit or view the configuration settings for the published assessment, such as the security checks the assessment performs. Any changes performed to the assessment settings will be recorded in the Log entries.



If your SQL Secure login does not have administrator permissions , you can only view assessment settings.

Refresh Audit Data

Allows you to re-run this assessment using different audit data (up to a specific point in time). Each time you refresh the audit data, SQL Secure registers the action in the [Change Log](#).

The following columns are displayed in the **Log Entries**:

Changed At

Provides the date and time at which the change occurred.

Assessment Status

Indicates the assessment status (published or approved) at the time of this change. Once an assessment is approved, only the assessments notes can be changed. Changes are not tracked when an assessment is in the draft status.

Changed By

Provides the name of the SQL Secure login who applied the change.

Change

Describes what change was applied.

SQL Secure tells you who has access to what on your SQL Server databases. [Learn more > >](#)

IDERA Website	Products	Purchase	Support	Community	About Us	Resources	Legal
-------------------------------	--------------------------	--------------------------	-------------------------	---------------------------	--------------------------	---------------------------	-----------------------

Working with approved assessments

Approved assessments accurately represent your security status at a specific point in time. An approved assessment represents the final step, or stage, in your audit process. Approved assessments typically contain your accepted and official security status in response to an audit. When you approve an assessment, it is automatically locked and set to approved mode.

Use the approved mode to safely archive the assessment, preserving your findings and explanation notes.

To approve assessments:

- The assessment must be published. Go to [Working with published assessments](#) for more information.
- Select your published assessment from the Policies tree of the **Security Summary** view and click **Approve** in the ribbon menu options of the **Summary** tab of your published assessment.



You can perform the following actions in the approve mode:

- Manually add or remove notes about an approved assessment by editing the **Notes** field on the assessment [Properties](#) window.
- Continue to use the [Change Log](#) tab to review activity that previously occurred on this assessment. However, no other changes are allowed.

Actions and Tasks for Approved Assessments

The following options are available in the **Summary** tab of a selected approved assessment:

View Assessment Settings

Allows you to view the configuration settings for an approved assessment, such as the security checks performed by the assessment.

Compare Assessments

Allows you to compare the findings and settings of an approved assessment against another saved assessment or the original policy. You can compare different types of assessments (draft, published, or approved). When you compare this assessment against the original policy from which it was saved, you can identify changes that have occurred since the assessment had been saved.

Save as New Assessment

Allows you to create a new assessment that uses the same settings and audit data as the selected assessment. When you save a new assessment, SQL Secure lists the assessment in the **Draft Assessment** folder under the associated policy in the Policies tree.

SQL Secure tells you who has access to what on your SQL Server databases. [Learn more >>](#)

IDERA Website	Products	Purchase	Support	Community	About Us	Resources	Legal
-------------------------------	--------------------------	--------------------------	-------------------------	---------------------------	--------------------------	---------------------------	-----------------------

Compare assessments

Use the **Assessment Comparison** window to compare any two assessments saved from the same policy. You can compare assessments previously saved from the default [All Servers policy](#) or from any custom policy you created. For example, you may want to compare a draft assessment of this quarter's **All Servers** audit to an approved assessment of last quarter's **All Servers** audit.

To compare assessments:

- Select one of the assessments you want compare and click **Compare Assessments** in the ribbon options of the **Summary** tab of your selected assessment.
- The selected assessment is displayed in **Assessment 1**, click the drop-down options to select another assessment or the corresponding policy. Notice, it will only display the respective policy and its associated assessments. You can select from draft, published, or approved assessments.
- You can select to compare All Servers or a specific SQL Server instance from the list of available instances in the drop-down options.
- Select the **Assessment 2** to which you want to compare Assessment 1.

The **Compare Assessment** results will be displayed in the section below with the following three tabs:

- [Compare Summaries](#)
- [Compare Security checks](#)
- [Compare Internal Review Notes](#)



For more information about how to use assessments in your existing audit process, see [Save Assessments](#).

SQL Secure tells you who has access to what on your SQL Server databases. [Learn more >>](#)

IDERA Website	Products	Purchase	Support	Community	About Us	Resources	Legal
-------------------------------	--------------------------	--------------------------	-------------------------	---------------------------	--------------------------	---------------------------	-----------------------

Compare assessment summaries

Use the **Compare Summaries** tab on the **Assessment Comparison** window to identify any differences in the security status of the two selected assessments. IDERA SQL Secure highlights each difference in yellow in the **Assessment Status** of each assessment.

The **Report Card Comparison Summary** shows where findings are equal (=) or not equal ().

From this tab, you can:

- Identify changes in risk level
- Compare security check findings
- Monitor whether security checks are enabled or disabled
- Monitor whether SQL Server instances are added or removed
- Review security status for all instances audited by each assessment

For a detailed comparison of each security check, see the [Compare Security Checks](#) tab. For more information, see [Compare Assessments](#).

SQL Secure tells you who has access to what on your SQL Server databases. [Learn more > >](#)

IDERA Website	Products	Purchase	Support	Community	About Us	Resources	Legal
-------------------------------	--------------------------	--------------------------	-------------------------	---------------------------	--------------------------	---------------------------	-----------------------

Compare assessment security checks

Use the **Compare Security Checks** tab on the **Assessment Comparison** window to identify any differences in the security check settings of the two selected assessments.

The **Security Checks Comparison Summary** displays what differences have been found between the security checks of both assessments using (=) and () to show where the differences are. Security Checks can be different in the Findings, Explanation Notes, Display Settings, and/or Criteria.

By using the options in the top right section you can:

- **Show All** security checks or **Show Differences Only**
- **Select Columns** to be displayed
- **Group by box**
- **Save**
- **Print**

Compare security check settings

The **Details** section allows to see, for each security check, the specific details in the following tabs:

Findings

Displays the findings returned by the selected security check when run by each assessment. The findings also display in the **Details** tab of the assessment **Report Card** at the enterprise and server levels.

Explanation Notes

Indicates whether an explanation note has been entered for this security check. Explanation notes are available from the assessment **Report Card** at the enterprise and server levels. To enter or edit an explanation note, select the target security check from the **Report Card**, and then click the **Explanation Notes** tab.

Display Settings

Provides the Risk Level, Report Text, and External Cross Reference assigned to this security check. For more information about these settings, see [Select Security Checks](#).

Criteria

Provides the criteria used to assess whether your audited instances are in compliance with this security check.

For a comparison of the overall security status, see the [Compare Summaries](#) tab. For more information, see [Compare Assessments](#).

SQL Secure tells you who has access to what on your SQL Server databases. [Learn more >>](#)

IDERA Website	Products	Purchase	Support	Community	About Us	Resources	Legal
-------------------------------	--------------------------	--------------------------	-------------------------	---------------------------	--------------------------	---------------------------	-----------------------

Compare Internal Review Notes

Use the **Compare Internal Review Notes** tab on the **Assessment Comparison** window to identify any differences in the internal review notes associated with the two selected assessments. IDERA SQL Secure displays both notes and identifies whether notes are equal (=) or not equal ().

For more information, see [Compare Assessments](#).

SQL Secure tells you who has access to what on your SQL Server databases. [Learn more > >](#)

IDERA Website	Products	Purchase	Support	Community	About Us	Resources	Legal
-------------------------------	--------------------------	--------------------------	-------------------------	---------------------------	--------------------------	---------------------------	-----------------------

Select audit data for assessment

Choosing a different set of audit data may alter the policy findings. After you choose a new data set, IDERA SQL Secure updates the policy. Use the [Refresh Audit Data](#) option to change the audit data for your policy.

By default, SQL Secure always uses the most recent audit data available.

When to select different audit data

Consider refreshing the audit data when:

- Your environment has changed and you need to re-run the assessment against the most recent audit data
- You have responded to a high or medium risk by adjusting a security setting in your environment and thus need to validate your change
- You want to run the same policy against a point in time in the past, such as last week or last month

Use only baseline snapshots

Baseline snapshots can be used as a guide about how your SQL Server security model should be configured. By running your policy against baseline snapshots only, you can test the thoroughness of this guide.

SQL Secure tells you who has access to what on your SQL Server databases. [Learn more >>](#)

IDERA Website	Products	Purchase	Support	Community	About Us	Resources	Legal
-------------------------------	--------------------------	--------------------------	-------------------------	---------------------------	--------------------------	---------------------------	-----------------------

Report on SQL Server Security

The **Reports** component of IDERA SQL Secure allows you to generate reports on SQL Server permissions. Use reports to confirm regulatory compliance and enforce security policies.

SQL Secure contains two different ways to access reports. Quick Reports are reports that have been built into SQL Secure to allow you to quickly generate reports that answer the most common SQL Server security questions. You can also generate reports using Microsoft Reporting Services. Microsoft Reporting Services allows you to build powerful, custom reports for a comprehensive auditing solution.

SQL Secure allows you to:

- [Generate reports within the SQL Secure interface](#)
- [Generate reports using Microsoft Reporting Services](#)

SQL Secure tells you who has access to what on your SQL Server databases. [Learn more > >](#)

IDERA Website	Products	Purchase	Support	Community	About Us	Resources	Legal
-------------------------------	--------------------------	--------------------------	-------------------------	---------------------------	--------------------------	---------------------------	-----------------------

How to use the Deploy Reports wizard

You can deploy the IDERA SQL Secure Reports to your existing Microsoft Reporting Services installation.

If you previously deployed SQL Secure Reports, verify which version of Reporting Services is currently running in your environment. SQL Secure supports Reporting Services version 2005 or later.



If you are upgrading reports from SQL Secure 2.0, delete all of the previously-installed SQL Secure reports before deploying new reports.

To integrate your SQL Secure Reports with your existing Microsoft Reporting Services Installation you must deploy them by clicking **Deploy Reports to Reporting Services** in the **Microsoft Reporting Services** section of the **Reports** view. The **Deploy Reports to Reporting Services** window opens, click **Next** and you will access the following sections:

- [Connect to Reporting Services](#)
- [Specify Repository as report data source](#)
- [Specify the Reports virtual directory](#)
- [Finish the Reports Deployment](#)

SQL Secure tells you who has access to what on your SQL Server databases. [Learn more >>](#)

IDERA Website	Products	Purchase	Support	Community	About Us	Resources	Legal
-------------------------------	--------------------------	--------------------------	-------------------------	---------------------------	--------------------------	---------------------------	-----------------------

Connect to Reporting Services

The **Connect to Reporting Services** section of the **Deploy Reports to Reporting Services** wizard allows you to specify the Report Server to which you want to deploy the IDERA SQL Secure Reports. The Deploy Reports wizard automatically applies connection settings based on a default Microsoft Reporting Services installation. You can use the default connection settings, or specify custom connection settings.

To specify connection settings, click **Show advanced connection options**, and then enter the appropriate settings.

Click **Next** to go to the next section where you can [specify the repository as report data source](#).



To successfully deploy reports, you must have Content Manager rights on the Report Server. For more information, see the Reporting Services Books Online.

SQL Secure tells you who has access to what on your SQL Server databases. [Learn more >>](#)

IDERA Website	Products	Purchase	Support	Community	About Us	Resources	Legal
-------------------------------	--------------------------	--------------------------	-------------------------	---------------------------	--------------------------	---------------------------	-----------------------

Specify Repository as report data source

The IDERA **SQL Secure Repository** section of the **Deploy Reports to Reporting Services** wizard allows you to determine:

- **Repository Server** - Specify the name of the SQL Server instance that hosts the Repository
- **Repository Credentials** - The Windows user account SQL Secure should use to connect to the Repository. You can use the same account that the Collection Service runs under, or you can specify a different account. The specified account should have permission to execute stored procedures on the Repository database.

Click **Next** to go to the next section where you can [specify the Reports virtual directory](#).

SQL Secure tells you who has access to what on your SQL Server databases. [Learn more > >](#)

IDERA Website	Products	Purchase	Support	Community	About Us	Resources	Legal
-------------------------------	--------------------------	--------------------------	-------------------------	---------------------------	--------------------------	---------------------------	-----------------------

Specify the reports virtual directory

This **Report Deployment Location** section allows you to specify the name of the folder where the reports should be stored. This folder belongs to the Virtual Directory specified in the Reporting Services connection settings, and is displayed when you access the reports using the Report Manager interface.

You can also specify whether you want to overwrite existing reports. Click **Overwrite existing reports** to enable this option. By overwriting existing reports, you ensure all deployed reports are current. ***If you decide not to overwrite existing reports***, the Deploy Reports wizard installs only the reports that are new or updated in this version of IDERA SQL Secure.

Click **Next** to continue to the [Summary section](#) before finishing the wizard.

SQL Secure tells you who has access to what on your SQL Server databases. [Learn more > >](#)

IDERA Website	Products	Purchase	Support	Community	About Us	Resources	Legal
-------------------------------	--------------------------	--------------------------	-------------------------	---------------------------	--------------------------	---------------------------	-----------------------

Finish the Reports deployment

Review the provided summary, and then click **Finish**. When you finish this wizard, IDERA SQL Secure installs the corresponding RDL files in the specified virtual directory on your Report Server.

If you want to change a setting now, click **Back** to return to the appropriate window. You can also change your deployment settings later through the Report Manager interface installed with Microsoft Reporting Services.

SQL Secure tells you who has access to what on your SQL Server databases. [Learn more > >](#)

IDERA Website	Products	Purchase	Support	Community	About Us	Resources	Legal
-------------------------------	--------------------------	--------------------------	-------------------------	---------------------------	--------------------------	---------------------------	-----------------------

Use the Console to generate reports

IDERA SQL Secure includes built-in reports specially designed to generate commonly requested audit reports using the SQL Server permission data collected in your snapshots.

SQL Secure built-in reports allow you to quickly and easily meet the demands of on-the-spot audits, routine audits, and long-term event trending. Each report provides detailed information about events in your SQL Server environment.



Using the Console to generate reports against large audit data sets can result in degraded performance. For example, when the selected snapshot is large (contains thousands of objects and permissions), the report performance may be impacted. ***If you experience degraded performance***, try increasing the Console timeout value and, if the performance issues continue, run the report with Microsoft Reporting Services instead.

Generate a report

To report on audit data:

1. In the console tree pane, click **Reports**.
2. In the view pane, select the report you want to generate.
3. Specify the appropriate parameters for the selected report, and then click **View Report**.

Available general reports

Report Name	Report Description
Audited SQL Servers	Displays all the SQL Server instances that are being audited by SQL Secure
Cross Server Login Check	Displays all SQL Server instances where a selected user has access
Data Collection Filters	Displays the data collection filters for all SQL Server instances
Risk Assessment	Displays all policy and risk assessment results. You can customize this text using the Policy Properties window. For more information, see Internal Review Notes .
Activity History	Displays all SQL Secure activity history
SQL Secure Users	Displays all SQL Secure users

Available entitlement reports

Report Name	Report Description
Suspect Windows Accounts	Displays all the suspect Windows Accounts that have Server Logins or Server Files Permissions. For more information, see Suspect Windows accounts .
Suspect SQL Logins	Displays all the suspect SQL Server Accounts that do not have any assigned permissions, i.e. databases, objects, or server files.
Server Logins and User Mappings	Displays all Server Logins and associated Database User Mappings for each SQL Server instance being audited
User Permissions	Displays permissions for a user across all SQL Server instances
All User Permissions	Displays all objects with permissions in the database for all SQL Server instances
Server Roles	Displays all direct members of Server Roles on all SQL Server instances
Database Roles	Displays all direct members of Database Roles on all SQL Server instances

Available vulnerability reports

Report Name	Report Description
Mixed Mode Authentication	Displays all SQL Server instances where Windows Authentication is not the only login method
Guest Enabled Databases	Displays all databases on a SQL Server instance where the Guest user has access
OS Vulnerability via XSPs	Displays all extended stored procedures that allow access to operating system features that could compromise system security
Vulnerable Fixed Roles	Displays all SQL Server instances that contain fixed roles assigned to public or guest
System Administrator Vulnerability	Displays all SQL Server instances that include built-in Administrators as members of the sysadmin role
Dangerous Windows Groups	Displays all SQL Server instances that grant access to any OS controlled Windows Group
Database Chaining Enabled	Display all SQL Server instances that have cross-database ownership chaining enabled
Mail Vulnerability	Displays all SQL Server instances with SQL Mail stored procedures
Login Vulnerability	Displays any SQL logins that have weak (easily guessed or hacked) passwords and lists their security properties, including the state of their password health.

Available comparison reports

Report Name	Report Description
Assessment Comparison	Displays any differences identified in the security settings and findings of two assessments.
Snapshot Comparison	Displays any differences identified in the configuration settings and audit data of two snapshots.

SQL Secure tells you who has access to what on your SQL Server databases. [Learn more >>](#)

IDERA Website	Products	Purchase	Support	Community	About Us	Resources	Legal
-------------------------------	--------------------------	--------------------------	-------------------------	---------------------------	--------------------------	---------------------------	-----------------------

Use Reporting Services to generate reports

IDERA SQL Secure includes the ability to take the existing built-in SQL Secure reports and seamlessly integrate them into Microsoft Reporting Services. For each built-in SQL Secure report, the Deploy Reports wizard installs a Report Definition Language (RDL) file. These RDL files define the report layout and parameters, using the data source (SQL Secure Repository) you specified during install. Reporting Services automatically acknowledges these files, allowing you to immediately generate and view reports on audit data using the Reports Manager Web interface.

You can view, customize, and develop new reports based on any of the built-in SQL Secure reports to fit your unique auditing needs. Reports can be viewed in an existing SQL Server environment that uses a dedicated Report Server. If you decide to use Microsoft Reporting Services, consider the following best practices:

- Save your new and modified reports to a separate folder
- Use a different file name for modified reports

For more information about the Reporting Services architecture, see the Reporting Services Books Online. For more information about developing custom reports using Microsoft Reporting Tools, see the Reporting Services Books Online.

Microsoft Reporting Services and SQL Secure

You can implement Reports on any computer running Reporting Services. The following installation scenario illustrates how you can implement Microsoft Reporting Services reports in an existing SQL Server environment that uses a dedicated Report Server.

Required permissions for Microsoft Reporting Services

Microsoft Reporting Services Reports leverage the existing role-based security model provided with Reporting Services. These reports support Windows authentication (mixed mode on SQL Server) and require the following permissions and rights to successfully generate reports on your audit data.

Assessing the appropriate role on the SQL Secure folder in Report Manager, the individual report files inherit the permissions you set. By default, the Deploy Reports Wizard writes the report files to the C:\Program Files\IderaSQLSecure\Reports folder on the Report Server computer.

Account	Action	Requirement
Logon account used for install	Write RDL files to the Report server computer and configure reports	Write access to the Report Server file system and Content Manager role
Proxy user	Connect to the Repository and read data per report parameters	Read access to the Repository databases
Administrator	Configure reports and set security	Content Manager role
End user (auditor or manager)	Generate and view audit reports	Browse role

Install reports

The [Deploy Reports wizard](#) allows you to specify the proxy user account credentials and deploy the reports. Perform this deployment for each Repository that contains data you want to audit using Reports. Once installed, click the **View Deployed Reports** link at the bottom of the SQL Secure Reports window to find your reports.

Set up permissions for auditors to generate reports

To grant auditors the ability to view and generate reports, create a SQL Server login and grant the **Can view** and **Report on audit data** permissions. Ensure that this account has the **Browse** role on the root folder.

SQL Secure tells you who has access to what on your SQL Server databases. [Learn more > >](#)

IDERA Website	Products	Purchase	Support	Community	About Us	Resources	Legal
-------------------------------	--------------------------	--------------------------	-------------------------	---------------------------	--------------------------	---------------------------	-----------------------

Manage SQL Secure

The **Manage SQL Secure** view lets you easily and quickly change your IDERA SQL Secure configuration and review SQL Secure activity. From the **Manage SQL Secure** view, you can access the following information:

Repository Status

Allows you to [view status of the SQL Server instances](#) that are registered with SQL Secure, SQL Secure licenses, and the SQL Server Agent used for collecting data.

Logins

Allows you to [view a list of logins that are active in SQL Secure](#).

Policies

Allows you to [view and change properties of existing policies](#), view which assessments have been saved for each policy, or create a new policy.

SQL Secure Activity

Allows you to [see the logged events](#) associated with changes or actions that occur within SQL Secure.

SQL Secure tells you who has access to what on your SQL Server databases. [Learn more > >](#)

IDERA Website	Products	Purchase	Support	Community	About Us	Resources	Legal
-------------------------------	--------------------------	--------------------------	-------------------------	---------------------------	--------------------------	---------------------------	-----------------------

View the SQL Secure Repository status

The **Repository Status** window allows you to view status of the SQL Server instances that are registered with IDERA SQL Secure, SQL Secure licenses, and the SQL Server Agent used for collecting data.

System Status

The **System Status** section lists the SQL Server instance where the Repository resides and the version of SQL Server being utilized. In addition, the total number of SQL Secure licenses, the amount of space the Repository is using, and the time of the last Repository grooming is listed. For more information on grooming, see [Grooming Snapshots](#).

License Summary

The **License Summary** provides a graphical representation of the total number of SQL Server instances that can be monitored using your current SQL Secure licenses, the number of SQL Server instances currently being monitored by SQL Secure, and the number of additional SQL Server instances that can be monitored by SQL Secure. For more information, see [Managing Your SQL Secure Licenses](#).

SQL Server Agent Status

The **SQL Server Agent Status** section displays the current status of the SQL Server Agent that SQL Secure uses to collect security information.

If the SQL Server Agent is stopped, you must start the agent on the SQL Server instance hosting the Repository or snapshots cannot be taken. For more information, see Microsoft Books Online.

Audited SQL Servers Status

The **Audited SQL Servers** section lists each audited SQL Server registered with SQL Secure. The list contains the status, last successful collection, and last collection attempted for each of the audited SQL Servers. Right-click a SQL Server instance in the list to explore user or object permissions, view the SQL Server instance summary, register a new SQL Server instance, remove the SQL Server instance from SQL Secure, configure the snapshot collection, manually take a snapshot, refresh, or view the properties of the SQL Server instance.

The following information is provided for each SQL Server instance:

Property	Column Description
SQL Server	Displays the name of the SQL Server instance that is being audited
Status	Displays any warnings or errors that may have occurred with the last snapshot
Last Successful Collection	Displays the date and time that the latest snapshot was taken and completed successfully
Last Collection	Displays the date and time that the last snapshot was attempted (whether or not it was completed successfully)
Collector Job Status	Describes the current status of the SQL Server job running the audit data collection

SQL Secure tells you who has access to what on your SQL Server databases. [Learn more >>](#)

IDERA Website	Products	Purchase	Support	Community	About Us	Resources	Legal
-------------------------------	--------------------------	--------------------------	-------------------------	---------------------------	--------------------------	---------------------------	-----------------------

Manage SQL Secure logins

The **Logins** window allows you to view a list of logins that are active in IDERA SQL Secure. This list provides the name, type of login, SQL Server access, and permissions in SQL Secure for each login. From this window, you can add new logins, delete logins, and edit login properties.



A user must have a SQL Secure login to use SQL Secure features, such as Reports.

Each SQL Secure access level maps to a specific SQL Server role that SQL Secure provides in the Repository. You can assign these SQL Secure roles to an existing login using SQL Server Enterprise Manager or Management Studio.

The following information is displayed in the **Logins** window:

Column	Description
Name	List the logins that are associated with the SQL Secure Repository database.
Type	Describes the type of login (Standard, windows Group, Windows User)
SQL Server Access	Describes the type of access the user has on the SQL Secure Repository database.
Permissions in SQL Secure	Describes the type of access the user has within the SQL Secure Console.

To know how to add or edit logins, go [Add New Login](#) and/or [Edit Login settings](#).

SQL Secure tells you who has access to what on your SQL Server databases. [Learn more > >](#)

IDERA Website	Products	Purchase	Support	Community	About Us	Resources	Legal
-------------------------------	--------------------------	--------------------------	-------------------------	---------------------------	--------------------------	---------------------------	-----------------------

Add new login

The IDERA **SQL Secure New Login** Wizard allows you to add new SQL Server logins to SQL Secure. In this wizard, you will be asked to supply the [Windows user account name](#) and [level of access](#) for the user you would like to add.

To access the **SQL Secure New Login** wizard, click **New Login** at the top of the **Logins** window in the **Manage SQL Secure** view. Alternatively, you can go to **File** menu and select **New SQL Secure Login**.

The **SQL Secure New Login** has the following sections:

- [Specify Login Properties](#)
- [Select permissions](#)
- [Review Login Summary](#)



A Repository login (database user) can be assigned SQL Secure permissions. These permissions control what tasks you are able to do in SQL Secure.

SQL Secure tells you who has access to what on your SQL Server databases. [Learn more >>](#)

IDERA Website	Products	Purchase	Support	Community	About Us	Resources	Legal
-------------------------------	--------------------------	--------------------------	-------------------------	---------------------------	--------------------------	---------------------------	-----------------------

Specify login properties

The **Add a new SQL Server login** window allows you to enter the Windows account name of the user you would like to add to IDERA SQL Secure. You can also specify whether or not you would like to grant access to this user. Follow these steps to add a new login:

1. Type the Windows user account in the **Name** field.
2. To grant the user access to SQL Secure, select the **Grant access** option, then click **Next**.

By selecting the **Deny access** option, the user will be blocked from accessing SQL Secure.



The user account must be entered in a domain\username and case-sensitive format.

SQL Secure tells you who has access to what on your SQL Server databases. [Learn more > >](#)

IDERA Website	Products	Purchase	Support	Community	About Us	Resources	Legal
-------------------------------	--------------------------	--------------------------	-------------------------	---------------------------	--------------------------	---------------------------	-----------------------

Select permissions

The **Set the SQL Secure Permission level** window allows you to choose whether or not the user should have access to IDERA SQL Secure and at what level. The user can have permissions to configure SQL Secure settings or only permissions to view audit data.



If you choose to grant permissions to configure audit settings, then you are assigning administrative level permissions; therefore, the login will be added to the sysadmin role on the SQL Server that hosts the Repository.

SQL Secure tells you who has access to what on your SQL Server databases. [Learn more > >](#)

IDERA Website	Products	Purchase	Support	Community	About Us	Resources	Legal
-------------------------------	--------------------------	--------------------------	-------------------------	---------------------------	--------------------------	---------------------------	-----------------------

Review login summary

Review the provided summary of the login you are creating, and then click **Finish**. When you finish this wizard, IDERA SQL Secure creates a SQL Server login with the specified permissions on the SQL Server instance that hosts the Repository databases.

If you want to change a setting now, click **Back** to return to the appropriate window. You can also change login settings later using the [Login Properties window](#).

[SQL Secure](#) tells you who has access to what on your SQL Server databases. [Learn more > >](#)

IDERA Website	Products	Purchase	Support	Community	About Us	Resources	Legal
-------------------------------	--------------------------	--------------------------	-------------------------	---------------------------	--------------------------	---------------------------	-----------------------

Edit login settings

IDERA SQL Secure allows you to edit individual login permissions (to SQL Secure) from the **Manage SQL Secure** view.

To edit SQL Secure login properties:

1. Select **Logins** from the **Manage SQL Secure** view.
2. In the list of Logins, right-click the login you want to edit and select **Properties**.
3. You can edit the **Security Access** properties (Grant or Deny access) or the **Permissions within SQL Secure** (where you decide if the login has Administrator server role or not). Click **OK** to queue your changes. The SQL Secure login has been edited and the new settings will apply the next time the user logs into SQL Secure.

SQL Secure tells you who has access to what on your SQL Server databases. [Learn more >>](#)

IDERA Website	Products	Purchase	Support	Community	About Us	Resources	Legal
--------------------------	-----------------	-----------------	----------------	------------------	-----------------	------------------	--------------

Manage policies

Use the **Manage Policies** view of the **Manage SQL Secure** view to obtain a quick overview of which policies are enabled and have saved assessments.

Available columns

These are the available columns in the **Policies** section:

Name

Provides the name of the policy

High Configured

Indicates how many high risk security checks were configured for this policy

Medium Configured

Indicates how many medium risk security checks were configured for this policy

Low Configured

Indicates how many low risk security checks were configured for this policy

Assessments

Indicates how many assessments have been saved from this policy.

Dynamic

Indicates whether this policy dynamically includes any newly registered SQL Server instance.

Review Notes

Indicates whether this policy has Internal Review Notes.

Description

Provides the description specified for this policy

Policy ID

Indicates the ID SQL Secure has defined for the policy

These are the available columns in the **Assessments** section:

Name

Provides the name of the assessment

High Configured

Indicates how many high risk security checks were configured for this assessment

High Icon

Indicates how many high risk findings this assessment had when last run

Medium Configured

Indicates how many medium risk security checks were configured for this assessment

Medium Icon

Indicates how many medium risk findings this assessment had when last run

Low Configured

Indicates how many low risk security checks were configured for this assessment

Low Icon

Indicates how many low risk findings this assessment had when last run

State

Provides the state (Draft, Published, Approved) of this assessment

Date

Indicates the date and time of the audit data used by this assessment. SQL Secure pulls the audit data from the snapshot that most closely matches this date and time

Description

Provides the description specified for this assessment

Assessment ID

Indicates the ID SQL Secure has defined for the assessment

SQL Secure tells you who has access to what on your SQL Server databases. [Learn more > >](#)

IDERA Website	Products	Purchase	Support	Community	About Us	Resources	Legal
-------------------------------	--------------------------	--------------------------	-------------------------	---------------------------	--------------------------	---------------------------	-----------------------

View SQL Secure activity

Each time a change or action occurs in IDERA SQL Secure, an event is logged. These logged events appear in the **SQL Secure Activity** view. This log includes collection activity, snapshot configuration changes, SQL Secure login changes, and any other changes made to your SQL Secure settings.

Available event data

The following columns are available in the **SQL Secure Activity** logs:

Column	Description
Type	Displays the type of event that occurred
Date and Time	Displays the date and time when the event occurred
SQL Server	Provides the name of the SQL Server instance where the event occurred
User	Provides the name of the user who initiated the event
Category	Provides the category of the event
Code	Displays a description of the code that is used in the event
Description	Displays a short description of the event



You can use the options in the upper section of this log to **Select Columns** to display, **Group by Box**, **Save** to an excel file, or **Print**.

SQL Secure tells you who has access to what on your SQL Server databases. [Learn more >>](#)

IDERA Website	Products	Purchase	Support	Community	About Us	Resources	Legal
-------------------------------	--------------------------	--------------------------	-------------------------	---------------------------	--------------------------	---------------------------	-----------------------

Manage server group tags

The **Server Group Tags** view lets you view a list of tags that are available in IDERA SQL Secure. Click a tag, and SQL Secure displays the list of SQL Servers within that tag at the bottom of the view. Use tags to group or organize instances for better management when taking snapshots. You can:

- snapshot all the servers you have registered
- snapshot a particular tagged group of servers
- snapshot a specific set of multiple tagged servers

For more information about snapshots, see [Use snapshots to collect audit data](#).

Managing tags

Users can create, edit, and delete tags using the Server Group Tags view available from the Manage SQL Secure view.

To create a server group tag:

- Click **Create Server Group Tag**.

To edit an existing tag:

1. Right-click the tag you want to edit, and then select .
2. Make the appropriate change(s), and then click .

To delete an existing tag:

- Right-click the tag you want to delete, and then select **Delete Tag**. SQL Secure removes the tag from the list and no longer offers the tag as an option when registering a server.

Adding servers to a tag

You can add servers to a server group tag using the following process or a similar process that occurs in the Register a SQL Server wizard.

To add a SQL Server to a tag:

1. In the **Manage SQL Secure** view, click the **Server Group Tags** option.
2. Right-click the tag to which you want to add a SQL Server, and then select **Add a server**.
3. Select the SQL Server(s) you want to add to the tag.

Creating a snapshot

Selecting SQL Servers to include in a snapshot is much faster when the servers all are tagged with the same server group tag. Use the following steps to take a snapshot from a tag already populated with the appropriate SQL Servers.

To take a snapshot of the servers in a tag:

1. In the **Manage SQL Secure** view, click the **Server Group Tags** option.
2. Take the snapshot using one of the following processes:
 - Select the tag you want to snapshot, and then select **Take Snapshot Now** from the Snapshots menu.
OR
 - Right-click the tag you want to snapshot, and then select **Take Snapshot Now**.
SQL Secure takes a snapshot of the servers in the selected server group tag.

SQL Secure tells you who has access to what on your SQL Server databases. [Learn more > >](#)

IDERA Website	Products	Purchase	Support	Community	About Us	Resources	Legal
-------------------------------	--------------------------	--------------------------	-------------------------	---------------------------	--------------------------	---------------------------	-----------------------

Configure email settings

The **SMTP Email Provider** window of IDERA SQL Secure allows you to enter your provider information, through which email notifications are distributed.

To configure your SMTP Email Provider:

1. Open the **SMTP Email Provider** window from the **Tools** menu option and select **Configure SMTP mail**.
2. Enter the **Email Server Information**: the SMTP address, port number, and the number of seconds to wait before timing out.
3. If the logon for the SMTP Email Provider requires authentication, check the **Server requires authentication** box and enter the user name and password.
4. Enter the name and address in the **Sender Information** section that will appear in the **From** field on the email notifications that are distributed by SQL Secure.
5. Click **OK**.



You can use the option **Test** to see if your SMTP email server configurations are correct.

SQL Secure tells you who has access to what on your SQL Server databases. [Learn more > >](#)

IDERA Website	Products	Purchase	Support	Community	About Us	Resources	Legal
-------------------------------	--------------------------	--------------------------	-------------------------	---------------------------	--------------------------	---------------------------	-----------------------

Manage your license

IDERA SQL Secure provides an intuitive, simple-to-use interface for license key management. You can view the status of the license keys and add licenses to audit additional instances.

When you reach the SQL Server limit dictated by your license, SQL Secure will not let you add new servers. Take into account the following scenarios:

- **If your trial period expires** - you will be prompted for a new license when you start the SQL Secure Console.
- **If a valid license is not provided** - then SQL Secure will shut down and no longer be accessible.



SQL Secure requires a license for each instance of SQL Server to be audited.

To view your **License Summary**, go to the **Repository Status** window of your **Manage SQL Secure** view. On the right side of this window, you can see a section called **License Summary** where SQL Secure displays bar graphs to help you compare between you number of Server Licenses, Audited Servers, and Remaining Licenses.

To manage your licenses, go to **File** menu, and select **Manage SQL Secure licenses**. In the new opened window you can see your License String, the number of servers it is for, and the number of days until it expires. In the License details you can also see the type of license you have, the exact date of expiration, and the repository for which is licensed.

Click **Add** to add a new license key.

SQL Secure tells you who has access to what on your SQL Server databases. [Learn more > >](#)

IDERA Website	Products	Purchase	Support	Community	About Us	Resources	Legal
-------------------------------	--------------------------	--------------------------	-------------------------	---------------------------	--------------------------	---------------------------	-----------------------

Delete a Data Snapshot

When you no longer want to keep a snapshot (and do not want to wait for the grooming process to occur), go to the **Explore Permissions** view, expand the SQL Server instance from which the snapshot was taken, select the respective snapshot, right-click it, and select **Delete snapshot**. A confirmation window appears, click **Delete** to continue.

SQL Secure tells you who has access to what on your SQL Server databases. [Learn more > >](#)

IDERA Website	Products	Purchase	Support	Community	About Us	Resources	Legal
--------------------------	-----------------	-----------------	----------------	------------------	-----------------	------------------	--------------

Edit audited SQL Server properties

The **Audited SQL Server Properties** window allows you to edit the way IDERA SQL Secure monitors your SQL Server instances. The **Audited SQL Server Properties** window contains general SQL Server instance information, credentials used to collect data, specified audit folders, snapshot filter settings, audit data collection schedule, email notifications settings, and policies the SQL Server pertains to.

To access the **Audited SQL Server Properties** window use any of the following options:

- Right-click the SQL Server instance from the **Explore Permissions** view and select **Configure Audit Settings**.
- Select the respective SQL Server in the **Servers in Policy** tree from the **Security Summary** view, and either right click to select **Configure Audit Settings** or select the same option from the ribbon options available in the **Summary**, **Settings**, or **Users** tabs.

SQL Secure tells you who has access to what on your SQL Server databases. [Learn more >>](#)

IDERA Website	Products	Purchase	Support	Community	About Us	Resources	Legal
-------------------------------	--------------------------	--------------------------	-------------------------	---------------------------	--------------------------	---------------------------	-----------------------

Change general properties

The **General** tab of IDERA SQL Secure contains basic information about your audited SQL Server, including the instance name, the SQL Server version, snapshot information, and security and auditing information.

Property Group	Description
Name, Version, and Operating System	Contains the name of the computer hosting the SQL Server instance belongs to, the SQL Server instance name, version number, edition, if replication is enabled or not, and if sa Account Password is empty or not.
Operating System	Contains the basic information of the operating system: server name, Windows OS, and if Server is Domain Controller
Snapshot	Contains basic snapshot information including the time and date of the current snapshot, the snapshot status, and when the last successful snapshot was taken.

SQL Secure tells you who has access to what on your SQL Server databases. [Learn more >>](#)

IDERA Website	Products	Purchase	Support	Community	About Us	Resources	Legal
----------------------	-----------------	-----------------	----------------	------------------	-----------------	------------------	--------------

Change connection credentials

The **Credentials** tab displays the credentials that IDERA SQL Secure uses to access the databases on the selected SQL Server instance. If you need to make changes to your credentials, change the information in the fields provided.

There are two types of credentials you need to specify:

Option	Description
SQL Server credentials to connect to audited SQL Server	<p>Choose one of the following options:</p> <ul style="list-style-type: none"> • Select Windows Authentication and enter the credentials in the fields provided. • Click SQL Server Authentication to use the default credentials of your SQL Server Agent.
Windows Credentials to gather Operating System and Active Directory objects - These credentials are used to connect to the target server to gather Active Directory objects, file, and registry key permissions.	<p>Select one of the following options:</p> <ul style="list-style-type: none"> • Check the Use same Windows Authentication as above box to use the windows credentials specified above. • Specify a different Windows account that SQL Secure will use use to gather information about OS and AD objects.



If the login configuration for the SQL Server you want to audit is case-sensitive, you must enter your login credentials in a case-sensitive format.



Permissions and Privileges

You should keep in mind the following permissions for the accounts specified in this section:

- The SQL Server login must belong to the sysadmin fixed role on the target instance.
- The Windows account must have Windows Administrator privileges on the target instance to collect group membership information.
- The account specified for gathering information about OS and AD objects must have admin access to the target server and at least login access to the SQL Secure Repository.

SQL Secure tells you who has access to what on your SQL Server databases. [Learn more >>](#)

IDERA Website	Products	Purchase	Support	Community	About Us	Resources	Legal
-------------------------------	--------------------------	--------------------------	-------------------------	---------------------------	--------------------------	---------------------------	-----------------------

Define folders

In the **Specify Audit Folders** section you can specify which folders will be audited for collecting file system permission information.

Click **Add** and type a mapped drive folder or a folder in UNC format. You can add as many folders as you require.

If you want to change or delete any of the previously added folders, click **Edit** or **Remove** respectively.

SQL Secure tells you who has access to what on your SQL Server databases. [Learn more > >](#)

IDERA Website	Products	Purchase	Support	Community	About Us	Resources	Legal
-------------------------------	--------------------------	--------------------------	-------------------------	---------------------------	--------------------------	---------------------------	-----------------------

Change audit filters

The **Filters** tab allows you to add a new filter, delete filters, and edit filter properties. Filters are the criteria used when collecting audit data for your snapshots.

Option	Description
New Filter	This button opens the Add Filter Wizard, which allows you to add filters to your snapshot. For more information, see Add new filter .
Delete Filter	Click this button to delete the selected filter.
Properties	This button opens the Filter Properties dialog window, which allows you edit the selected filter settings. For more information, see Edit filter settings .

Manage audit filters

To add a new audit filter

When you click **Add New Filter**, SQL Secure opens the **Add Filter** wizard. To add a new filter, follow the directions on the windows in the wizard. For more information, see [Add new filter](#).

To edit an audit filter

You can edit a filter by selecting the filter you want to edit, and then clicking **Edit** to show all the properties of the audit filter.

To delete an audit filter

Select the filter you want to delete and click **Delete** to remove the filter from SQL Secure.

Once you have configured your snapshot collection settings, you can view your updated snapshots to ensure that they are set up the way you intended.

SQL Secure tells you who has access to what on your SQL Server databases. [Learn more >>](#)

IDERA Website	Products	Purchase	Support	Community	About Us	Resources	Legal
-------------------------------	--------------------------	--------------------------	-------------------------	---------------------------	--------------------------	---------------------------	-----------------------

Change snapshot schedule

The **Schedule** tab allows you to choose the best times to generate a snapshot on your SQL Server instance. By default, snapshots are scheduled for every Sunday morning at 3:00 am. It is recommended that you schedule snapshots to occur during "off-peak" hours.

The **Schedule** tab contains the schedule, if any, that is currently being used for the SQL Server selected instance. To change the schedule, click **Change** and select the new time and frequency for snapshot collection.

The first snapshot is taken at the first scheduled snapshot collection time. Snapshots can also be taken manually right-clicking the SQL Server instance in the **Explore Permissions** view and selecting **Take Snapshot Now**.

The **Schedule** tab displays the following information:

Option	Description
Keep snapshot for [number] days	Type, or use the up and down arrows, to indicate the number of days that you want to store snapshots in the SQL Secure Repository.
Enable Scheduling	Check this box to enable the defined audit snapshot schedule
Change	Click this button to edit your audit snapshot collection schedule.



- To view all properties of a snapshot, click the respective snapshot below the respective SQL Server in the **Audited SQL Servers** tree of the **Explore Permissions** view.
- You can also right-click the snapshot from the **Audited SQL Servers** tree of the **Explore Permissions** view and select **Properties**. The **Snapshot Properties** window opens with all its corresponding settings.

SQL Secure tells you who has access to what on your SQL Server databases. [Learn more > >](#)

IDERA Website	Products	Purchase	Support	Community	About Us	Resources	Legal
-------------------------------	--------------------------	--------------------------	-------------------------	---------------------------	--------------------------	---------------------------	-----------------------

Change email notification

The **Email** tab allows you to configure the way email notifications are sent after a snapshot is collected. You can select to have email notifications sent after a snapshot is collected successfully, or only if there are warnings or errors. You can also select to have email notifications sent depending on the level of the security risks discovered.

Once you have configured when notifications are sent, enter the email address to send notifications to in the **Email Recipient** field. To enter multiple email addresses, separate each address with a semi-colon.



If you do not want to receive email notifications for snapshot status or security finding, unchecked the associated option.

SQL Secure tells you who has access to what on your SQL Server databases. [Learn more > >](#)

IDERA Website	Products	Purchase	Support	Community	About Us	Resources	Legal
-------------------------------	--------------------------	--------------------------	-------------------------	---------------------------	--------------------------	---------------------------	-----------------------

Change which policies audit this instance

The **Policies** tab allows you to modify the policies to which the selected SQL Server instance is assigned. There are two kinds of policy memberships:

User-defined policy membership

A manual policy is a policy that must be manually assigned to a SQL Server instance.

Automatic policy membership

An automatic policy is a policy that is configured so that all SQL Server instances are automatically assigned to it.

SQL Secure tells you who has access to what on your SQL Server databases. [Learn more > >](#)

IDERA Website	Products	Purchase	Support	Community	About Us	Resources	Legal
-------------------------------	--------------------------	--------------------------	-------------------------	---------------------------	--------------------------	---------------------------	-----------------------

Select audited SQL Server to explore data

When you want to explore user or object permissions, you can select a specific SQL Server in any of the views of IDERA SQL Secure, right-click it, and select the options **Explore user permissions** or **Explore Object permissions**. SQL Secure opens the respective tabs for the selected SQL Server.



If the SQL Server instance you want to select is not listed, the instance may not be [registered with SQL Secure](#).

SQL Secure tells you who has access to what on your SQL Server databases. [Learn more >>](#)

IDERA Website	Products	Purchase	Support	Community	About Us	Resources	Legal
-------------------------------	--------------------------	--------------------------	-------------------------	---------------------------	--------------------------	---------------------------	-----------------------

Troubleshooting WMI connectivity issues

The user account used by IDERA SQL Secure to gather Operation System and Active Directory objects must have administrator permissions on the remote server to be able to use WMI.

The most frequently encountered problems with WMI connectivity are:

- RPC traffic not getting through to the remote computer
- Invalid DCOM or WMI permissions
- Ports are not open or firewall is preventing access

The following Web links may provide additional information about how to troubleshoot WMI connectivity issues:

- [Securing a remote WMI Connection](#)
- [Help with Scripts](#)

Resolve WMI Issues using WbemTest

You can use the WbemTest (Windows Management Instrumentation Tester) tool to connect to a server and issue WMI queries. Download this tool from Microsoft TechNet. This tool can help you test and troubleshoot WMI issues.

To use WbemTest:

1. Run `wbemtest.exe`.
2. Click **Connect**.
3. In the **NameSpace test** box, enter `\\server\root\cimv2` where server is the name of the server you want to connect to.
4. Click **Connect**.
5. Click **Query**.
6. Enter `select*` from `win32_process`.
7. Click **Apply**.

If WbemTest was able to connect to the remote server and issue the query using WMI, you should see a query result with output. In this case, WMI to the required server is working and no further action is needed. For more information on the Windows Management Instrumentation Tester, refer to Windows Management Instrumentation Tester overview.

If you receive an error message, use the following processes to help identify and resolve the issue.

Error: The RPC Server Is Unavailable

This error usually indicates that the RPC traffic is not getting to the remote server, or there is no RPC listener on the remote server.

To troubleshoot this RPC error:

1. Ensure the Remote Procedure Call (RPC) service is running on the remote server.
2. Verify that there is a TCP listener on the remote server by running the `netstat -nao` command and verifying that there is the following entry: `TCP 0.0.0.0:135 0.0.0.0:0 LISTENING 1304`
3. In the Tools sub-directory, run `rpcping /s <servername> /t ncacn_tp_tcp` where `<servername>` is the name of the remote server. This command verifies that RPC can communicate with the remote server. The output should be similar to:
 - Completed 1 calls in 15 ms
 - 66 T/S or 15.000 ms/T
4. Ensure that the traffic is not being blocked by local or internal network firewalls. Either disable the firewall or configure the Windows firewall to allow incoming RPC traffic.
5. Try to use the remote server IP address instead of the server name. If the IP address works, you may have a DNS issue.
6. **If the remote server resides in a different domain**, the two domains may not trust each other, or the user account being used does not have administrator permissions on the remote server/domain.
7. **If both computers are in the same domain**, and the user account has administrator permissions, try rejoining both computers to the domain.

Error: Access Denied

This error can indicate permission issues.

To troubleshoot this access error:

1. If the remote computer is running Windows XP, make sure Force Guest is disabled. This setting forces any connection to be impersonated as Guest.
 - a. Open the Local Security Policy console from Administrative Tools.
 - b. Browse to **Security Settings > Local Policies > Security Options**.
 - c. Double-click Network Access: Sharing And Security Model For LocalAccounts.
 - d. Change the settings from `Guest Only` to `Classic`.
2. Ensure that DCOM is enabled on the remote server:

- a. Run `DcomCnfg` on the remote server.
 - b. Click **Component Services**.
 - c. Expand **Computers**.
 - d. Right click **My Computer** and select **Properties**.
 - e. Click the **Default Properties** tab.
 - f. Ensure **Enable Distributed COM** on this computer is checked.
3. Ensure the correct DCOM remote launch and activation permissions are configured:
 - a. Run `DcomCnfg` on the remote server.
 - b. Click **Component Services**.
 - c. Expand **Computers**.
 - d. Right click **My Computer** and select **Properties**.
 - e. Ensure **Enable Distributed COM** on this computer is checked.
 - f. Click the **Com Security** tab.
 - g. Under **Launch and Activation Permissions**, click **Edit Limits**.
 - h. In the Launch Permissions dialog box, make sure your user account or group is listed in the Groups or user names list. If your user account or group is not listed, click **Add** and add it to the list.
 - i. In the Launch Permission dialog box, select your user account or group in the Group or user names list. In the Allow column under Permissions for User, select **Remote Launch** and **Remote Activation**, and then click **OK**.
4. Ensure the correct DCOM remote access permissions are configured:
 - a. Run `DcomCnfg` on the remote server.
 - b. Click **Component Services**.
 - c. Expand **Computers**.
 - d. Right click **My Computer** and select **Properties**.
 - e. Ensure **Enable Distributed COM** on this computer is checked.
 - f. Click the **Com Security** tab.
 - g. Under **Access Permissions**, click **Edit Limits**.
 - h. In the Access Permission dialog box, select ANONYMOUS LOGON name in the Group or user names list. In the Allow column under Permissions for User, select **Remote Access**, and then click **OK**.
5. Ensure the correct WMI namespace permissions are configured.
 - a. Run `wmicmgmt.msc`.
 - b. Right-click **WMI Control**, and then select **Connect to another computer**.
 - c. Enter the remote server name, and then click **OK**.
 - d. Right-click **WMI Control**, and then select **Properties**.
 - e. In the Security tab, select the namespace, and then click **Security**.
 - f. Locate the appropriate account, and then check **Remote Enable** in the Permissions list.

Warning: The Network Path Was Not Found

This warning typically indicates that SQL Secure cannot access the target computer due to closed ports or firewall access settings. Ensure the appropriate port is open on the target computer and check your firewall configuration.

SQL Secure uses the default ports opened by the Windows operating system for local and remote communications. To learn about Windows port assignments, see [Article 832017](#) on the Microsoft Support site. To better understand how port assignments work when Windows Firewall has been configured, see "[Connecting Through Windows Firewall](#)" on the MSDN site.

SQL Secure tells you who has access to what on your SQL Server databases. [Learn more >>](#)

IDERA Website	Products	Purchase	Support	Community	About Us	Resources	Legal
-------------------------------	--------------------------	--------------------------	-------------------------	---------------------------	--------------------------	---------------------------	-----------------------