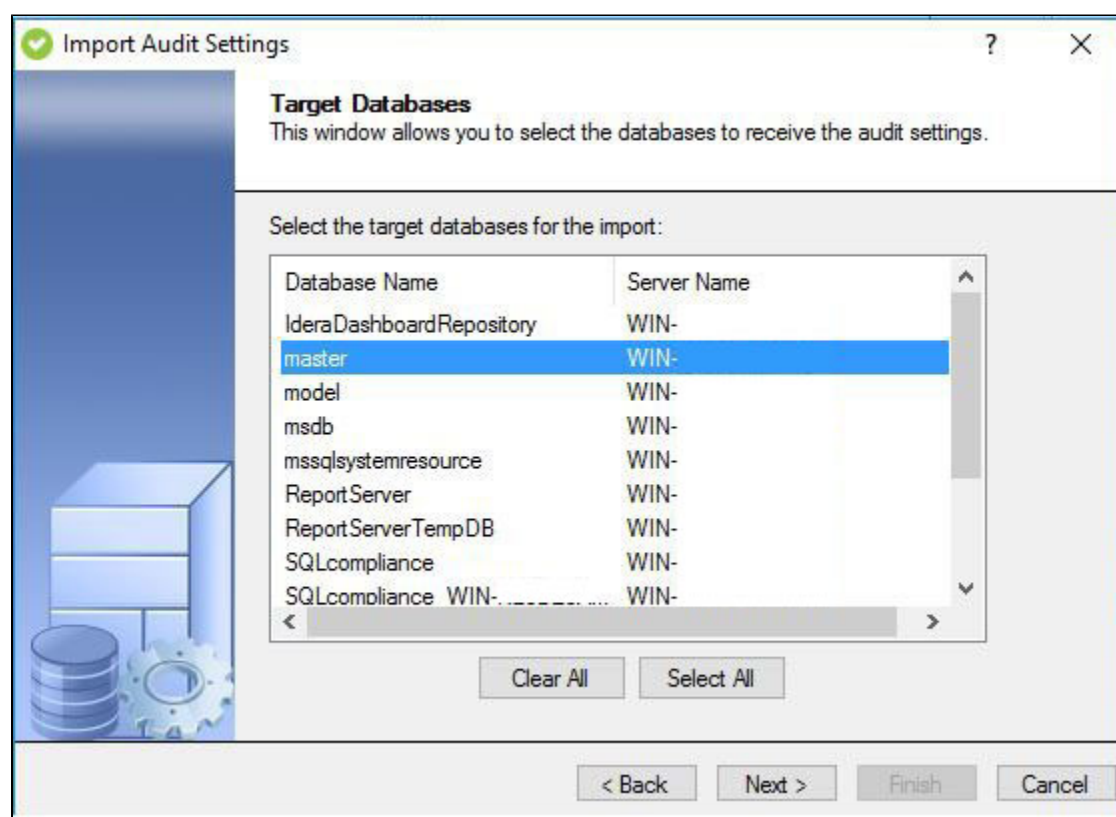


# Import Audit Settings wizard - Target Databases window

The Target Databases window of the Import Audit Settings wizard allows you to select which databases you would like to audit using the imported settings.

You can import audit settings to any audited database. To successfully collect audit data from the target database, ensure auditing is enabled at the database level.

**If you previously choose to import audit settings to target databases that matched the names of the source databases**, this window will only list the matching databases. To import audit settings to all databases, return to the Import Audit Settings window and clear the Only import for matching database names option.



## Available actions

### Clear All

Clears all audited databases.

### Select All

Selects all audited databases.