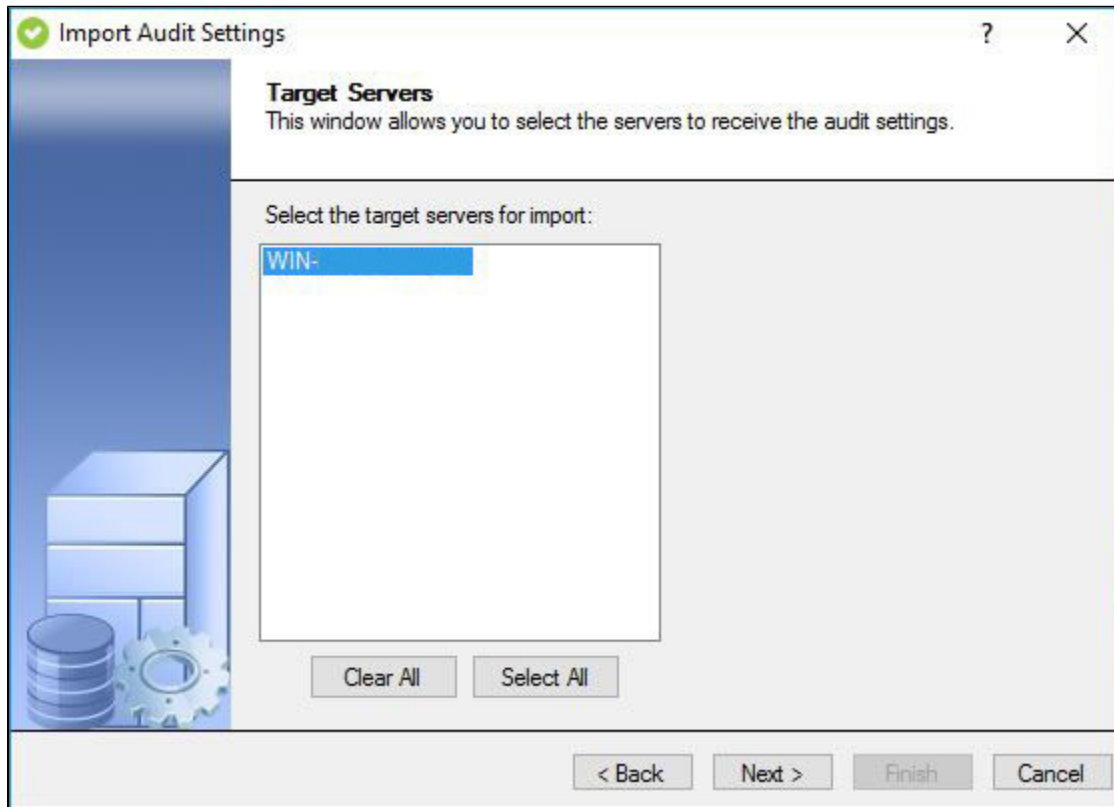


# Import Audit Settings wizard - Target Servers window

The Target Servers window of the Import Audit Settings wizard allows you to select which registered SQL Server instances you would like to audit using the imported settings.

You can import audit settings to any registered SQL Server instance. To successfully collect audit data from the target SQL Server instance, ensure auditing is enabled at the server level.



## Available actions

### Clear All

Clears all registered SQL Server instances.

### Select All

Selects all registered SQL Server instances.