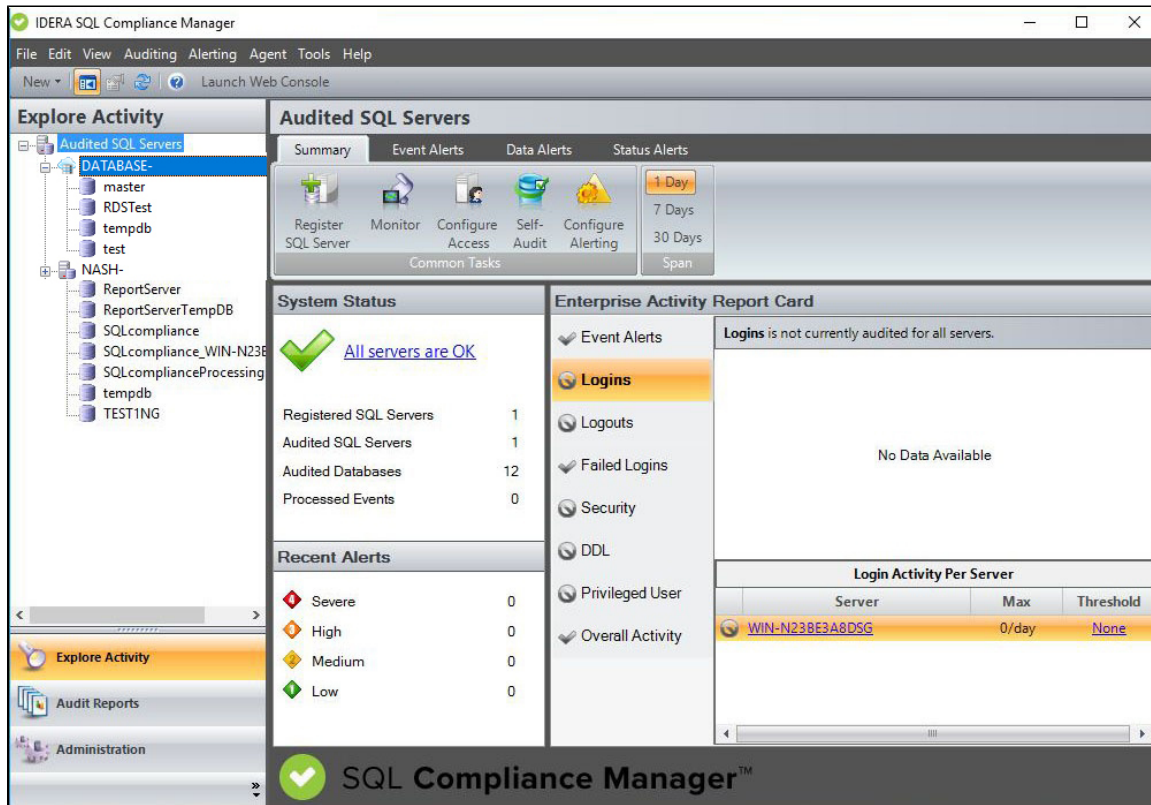


Explore Activity View

The SQL Compliance Manager Explore Activity view is the windows console main display screen which allows you to get an overview of the status of your SQL Server instances and hosted databases all in a consolidated view, while providing the means to drill into individual SQL Server or database configuration settings for more details. Select the Audited SQL Servers option from the expansion tree to display an overview of your registered servers, or select a registered instance to view the captured events and to set your desired configurations. In addition, you can also select a database to view detailed information or to set your configuration settings for that specific database.



Use the links below to learn more about the different level Explore Activity views:

- [Explore Activity - Audited SQL Servers View](#)
- [Explore Activity - Instance View](#)
- [Explore Activity - Database View](#)

[IDERA](#) | [Products](#) | [Purchase](#) | [Support](#) | [Community](#) | [Resources](#) | [About Us](#) | [Legal](#)