

Default Audit Settings tab

SQL Compliance Manager 5.6 implemented the capability to set default settings at both the Server Level and the Database Level. Previously, when a new server or database was registered users had the option to use the IDERA defaults, choose from a Regulation Guideline or customize the audit settings.

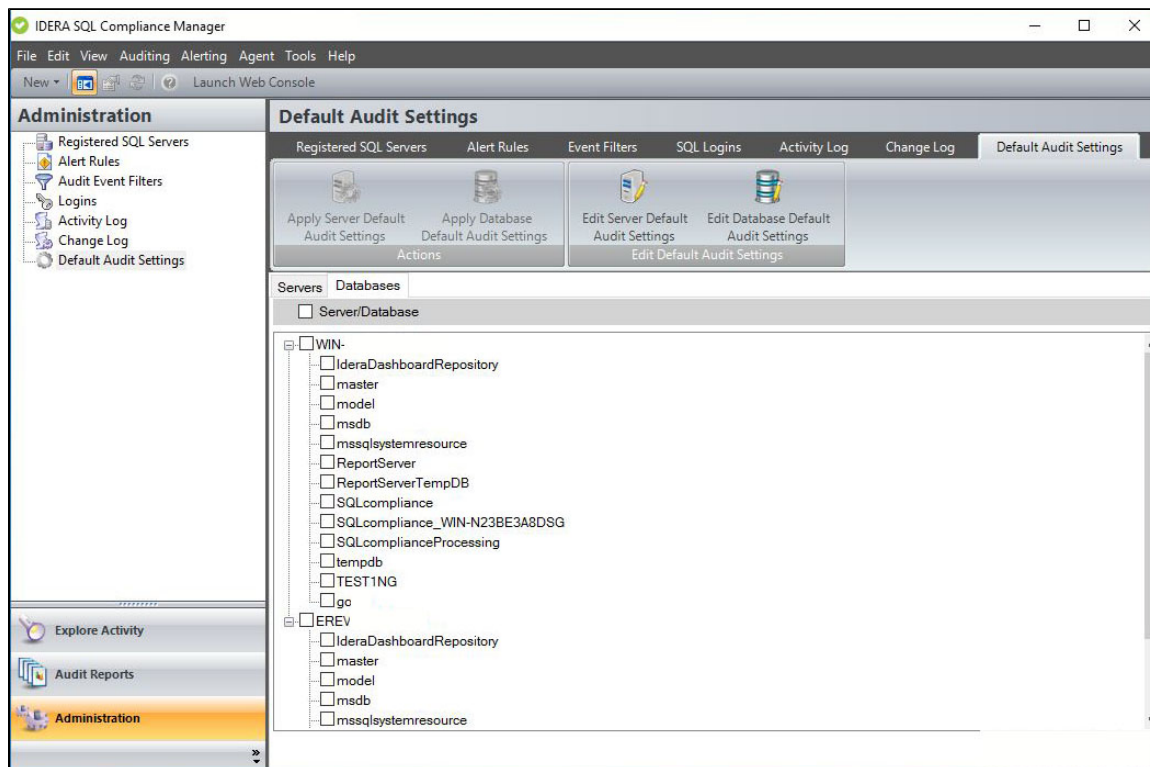
This new functionality makes it easy to set new Servers and Databases exactly the way users want without having to make additional updates to the configurations. In addition, users have the option to apply the previously configured default settings to selected Servers and Databases that are already being audited.

The default settings are the same settings that you would see in the properties for the Server or Database (except that they apply to the default and not a given Server or Database). Initially settings are set to the Idera Default Settings, subsequent visits to this page will reflect the default settings saved by the user. To learn more about the Idera default audit settings please visit the [Idera default audit settings](#) page.

The Default Audit Settings tab in the Administration view provides users with a list of their audited Servers and Databases to which they can choose to apply the default settings. Once your desired default audit settings are set, select from the list of servers or from the list of databases, the ones to which you wish to apply the default audit settings. For more information on how to edit the default settings please visit the [Edit Server Default Audit Settings](#) page or the [Edit Database Default Audit Settings](#) page.



Sensitive Columns and BAD are not available for the Database Default settings since those tables will vary greatly from database to database.



Available actions

Apply Server Default Audit Settings

Applies your previously configured Server Default Audit Settings to all the selected Servers from the Servers list. For more information, see [Apply Server Default Audit settings](#).

Apply Database Default Audit Settings

Applies your previously configured Database Default Audit Settings to all the selected Databases from the Databases list. For more information, see [Apply Database Default Audit settings](#).

Edit Server Default Audit Settings

Allows you to configure your desired server default audit settings. These settings can later be applied to any server registered in your environment. For more information, see [Edit Server Default Audit Settings](#).

Edit Database Default Audit Settings

Allows you to configure your desired database default audit settings. These settings can later be applied to any audited database in your environment. For more information, see [Edit Database Default Audit Settings](#).

Available columns

Servers

Displays a list of all registered servers available for selection.

Databases

Expand the Server to displays a list of all audited databases available for selection.

[IDERA](#) | [Products](#) | [Purchase](#) | [Support](#) | [Community](#) | [Resources](#) | [About Us](#) | [Legal](#)