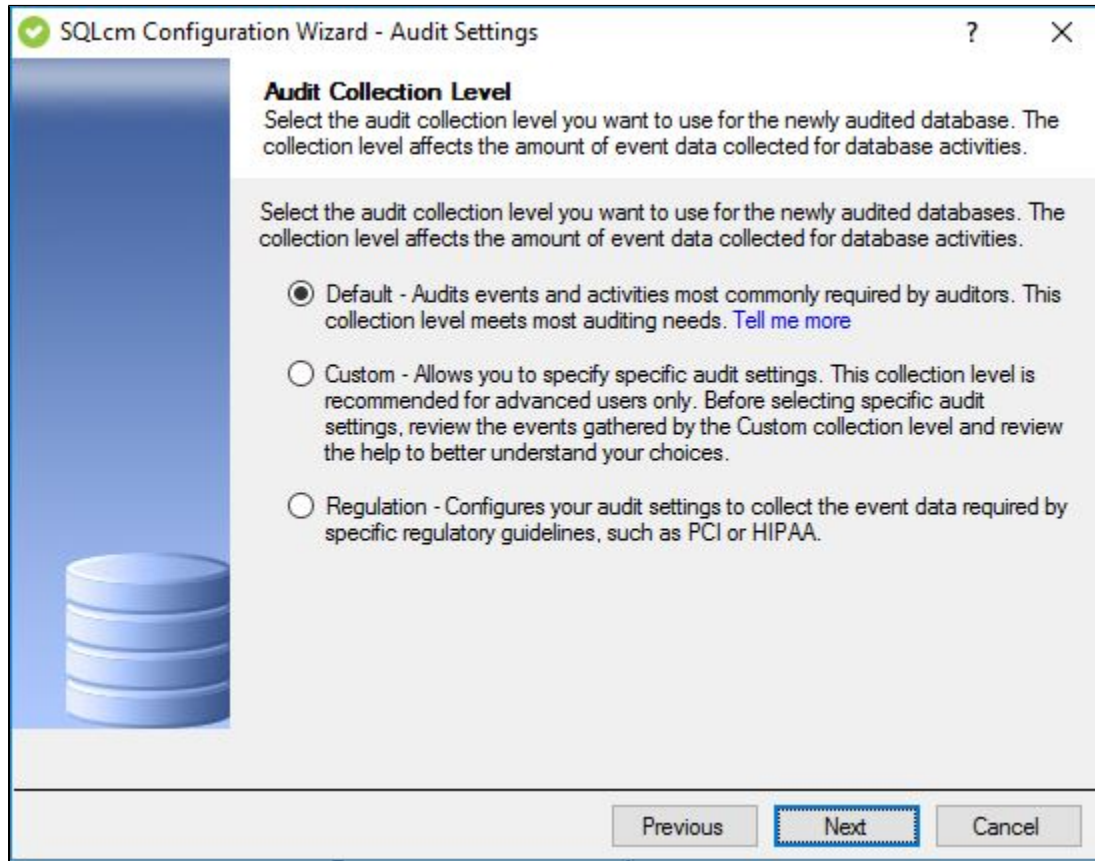


Configuration wizard Add Audited Database - Audit Collection Level window

The Audit Collection Level window of the Configuration wizard allows you to choose whether to use the default, custom, or regulation audit settings (audit collection levels) for the databases you selected for audit in IDERA SQL Compliance Manager.

Select the audit collection level you want to use, and then click **Next**.



Available fields

Default

The **Default** audit collection level allows you to collect the SQL Server events most commonly requested by auditors. This collection level audits the following activities and SQL events:

- Security changes
- Database definition (DDL)
- Administrative activities
- Successful operations only (operations that pass the SQL access check)

Custom

Choosing the **Custom** audit collection level allows you to specify the activities and SQL events you want to audit on these databases. You can also audit system tables. The **Custom** collection level is recommended for advanced users, or for cases in which only one type of data is required for compliance. Before using this collection level, review the event data gathered by the **Default** collection level.

Regulation

The **Regulation** audit collection level configures your audit settings to collect the event data required by specific regulatory guidelines, such as PCI DSS or HIPAA. You can review a list of the collected events on the Regulation Guidelines window of the SQL Compliance Manager Configuration Wizard. On the Summary window at the end of the wizard, click **View the Regulation Guideline Details** to review a summary of all the regulation guidelines applied to the selected database.

[IDERA](#) | [Products](#) | [Purchase](#) | [Support](#) | [Community](#) | [Resources](#) | [About Us](#) | [Legal](#)