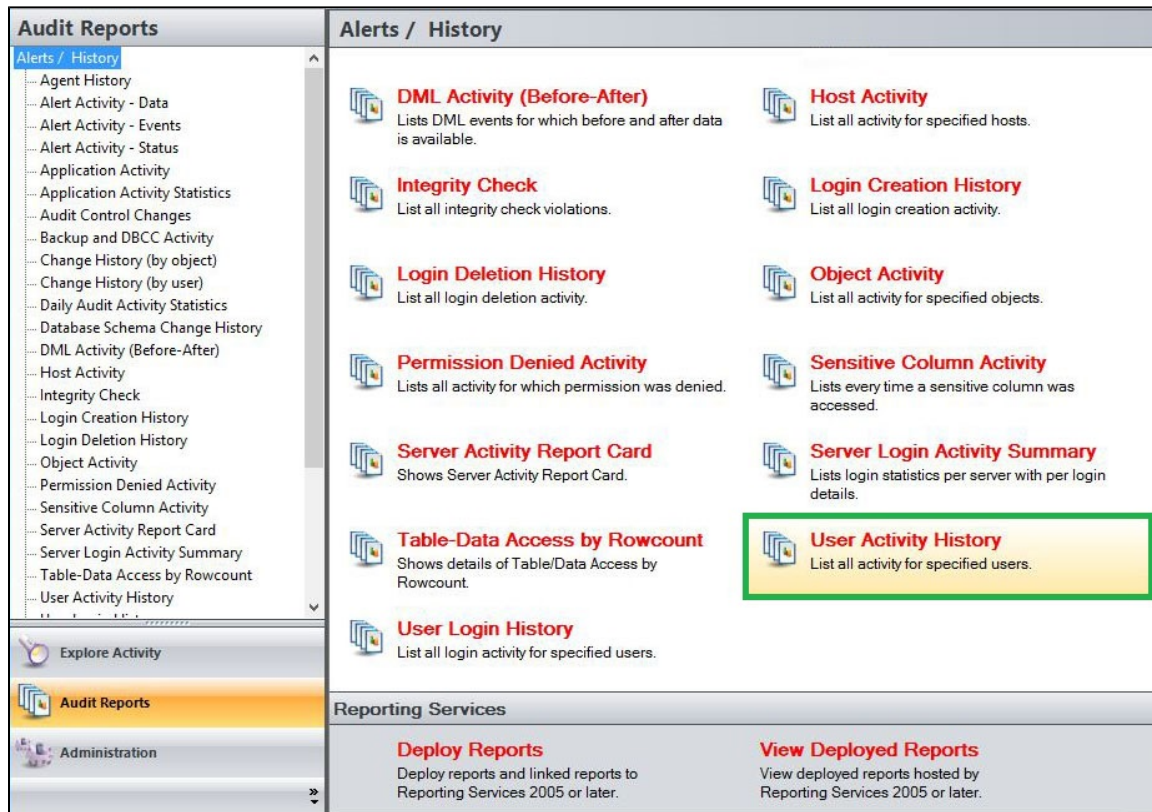


User Activity History Report

The User Activity History Report lists user activities performed on a specific SQL Server instance, and provides a history of user activity for specified users.



A filter can include a list of wildcards, separated by commas, where a wildcard is a string, which may contain asterisks. The following parameters are specific to the selected report and enable you to filter the data to include in the report.

Available actions

Server Instance

Allows you to select a registered instance on which you want to report. Select **ALL** to report on all instances.

Databases

Allows you to select or type the name of one or more databases on which you want to report.

Login

Allows you to select the login from the drop down list of available logins. Select **ALL** to report on all logins.

Start Date

Allows you to select the start date for the range from which you want to report.

End Date

Allows you to select the end date for the range from which you want to report.

Start Time - Hour

Allows you to select the exact starting hour of the day for the range from which you want to report.

Start Time - Min

Allows you to select the exact starting minute of the day for the range from which you want to report.

Start Time - AM/PM

Select between AM or PM from the drop down list to configure the Start Time for Each Day range from which you want to report.

End Time - Hour

Allows you to select the exact ending hour of the day for the range from which you want to report.

End Time - Min

Allows you to select the exact ending minute of the day for the range from which you want to report.

End Time - AM/PM

Select between AM or PM from the drop down list to configure the End Time for Each Day range from which you want to report.

Schema

Allows you to type the name of the schema on which you want to report.

Target Object

Allows you to type the name of one or more target objects on which you want to report.

Application

Allows you to type the name of one or more applications on which you want to report.

Host

Allows you to type the name of one or more hosts on which you want to report.

Category

Allows you to select the category type on which you want to report. Select a category type from the drop down menu to filter the report on.

Event

Allows you to type the name of one or more events on which you want to report.

Show SQL

Select between True or False from the drop down menu to filter the report by SQL Text.

Privileged Users Only

Select between True or False from the drop down list to report on Privileged Users only or to report on All User types.

Run Report

Click this button to Run the report.

Default columns

Host

The Host column displays the name of the host.

Login

The Login column displays the login name of the user who performed the event.

Application

The Application column displays the name of the application used to capture the event.

Database

The Database column displays the name of the database where the event was captured.

Event

The Event column displays a description of the event captured.

Schema Name

The Schema column displays the name of the event's schema.

Target Object

The Target Object column displays the name of the target object.

Details

The Details column provides details of the captured event.

Time

The Time column displays the date and time when the event was captured.

SQL

The SQL column when set to True, provides the SQL Statement for the captured event.

User Activity History

Server Instance: <ALL>

Database: *

Login: <ALL>

Start Date: 10/ 8/2019

End Date: 10/15/2019

Start Time for Each Day

End Time for Each Day

Start Time - Hour: 12

End Time - Hour: 11

Start Time - Min: 00

End Time - Min: 59

Start Time - AM/PM: AM

End Time - AM/PM: PM

Schema: *

Target Object: *

Application: *

Host: *

Category: <ALL>

Event: *

Show SQL: False

Privileged Users Only: False

Run Report

1 of 1

100%

SQL Compliance Manager™

User Activity History

From 10/8/2019 to 10/15/2019

From 12:00 AM to 11:59 PM

Server Instance: <ALL>

Database: All Databases

Login: <ALL>

Schema: All Schemas

Application: All Applications

Category: All Categories

Show SQL Text: No

Target Object: All Target Objects

Host: All Hosts

Event: All Events

User Type: All Users

Login

Host

Application

Database

Event

Schema

Target Object

Details

Time

SQL