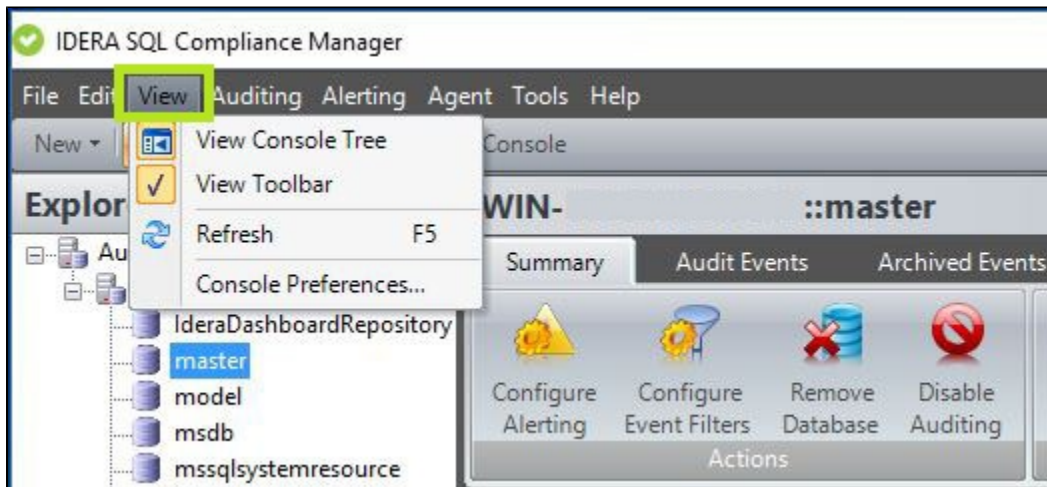


# SQL Compliance Manager Menu - View

The View option from the SQL Compliance Manager Menu allows users to configure the Console Preferences, as well as to choose whether to display or not the Console Tree view and the Toolbar view.



## Available actions

### View Console Tree

Allows users to choose whether to display or to hide the Console Tree pane.

### View Toolbar

Allows users to choose whether to display or to hide the Toolbar.

### Refresh

Refresh the SQL Compliance Manager Windows Console.

### Console Preferences

Opens the Console Preferences window, allowing users to configure how the IDERA SQL Compliance Manager Management Console displays events in the Audited Events tab. In the Console Preferences users can also define the number of alerts that display per view page.