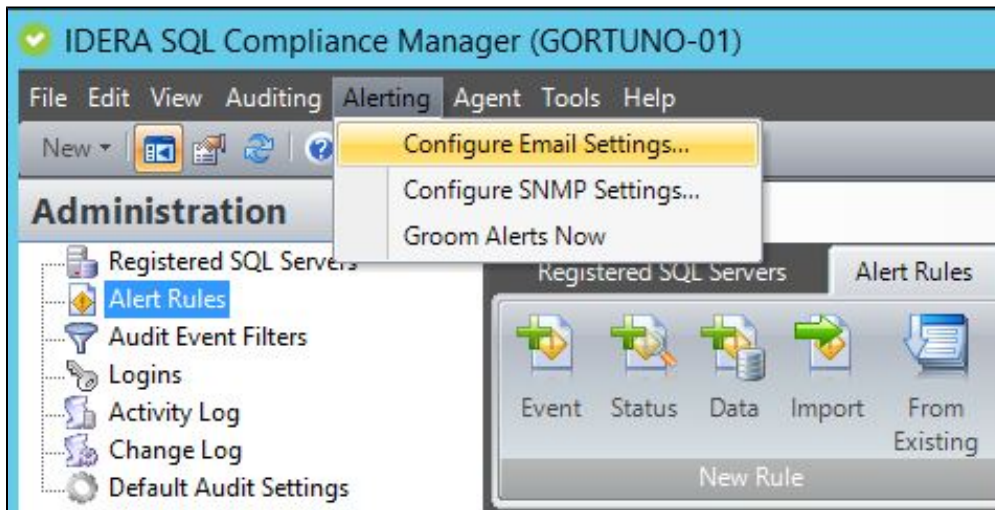


Configure Email Settings window

The Configure Email Settings window allows you to configure IDERA SQL Compliance Manager to connect to your mail server. This configuration is required to send alert email notifications.



Available actions

Test your configuration settings

Allows you to verify that SQL Compliance Manager can connect to your mail server using the specified settings. This test does not verify whether your mail server successfully sent the alert email notification to the specified recipients.

Available fields

SMTP Server

Allows you to specify the name of the computer on which your mail server is running.

Port

Allows you to specify which port your mail server uses for incoming communications.

Requires Authentication

Allows you to indicate whether the mail server requires authentication to connect to the server. ***If authentication is required,*** provide the user name and password SQL Compliance Manager should use to access the mail server.

SSL

Allows you to indicate whether the mail server is configured to use Secure Sockets Layer (SSL) for network communications.

Sender Address

Allows you to specify the email address SQL Compliance Manager should use to send the alert email notification.

SQL Compliance Manager monitor, audit and alert on SQL user activity and data changes.

[IDERA](#) | [Products](#) | [Purchase](#) | [Support](#) | [Community](#) | [Resources](#) | [About Us](#) | [Legal](#)