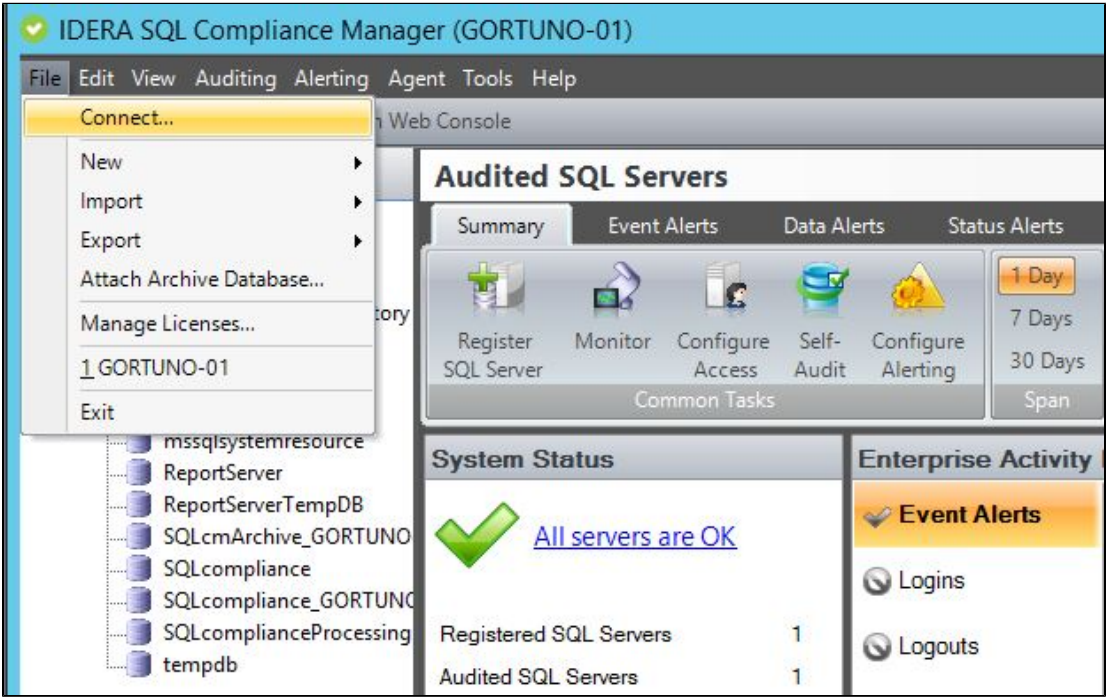


Connect to Repository window

The Connect to Repository window allows you to connect to a different installation of the IDERA SQL Compliance Manager Repository. You can type the name of the SQL Server instance that hosts the Repository databases or browse for the instance. **If the target SQL Server instance is not listed**, verify that the instance is available.

Specify the appropriate SQL Server instance, and then click **OK**.



SQL Compliance Manager monitor, audit and alert on SQL user activity and data changes.

IDERA | [Products](#) | [Purchase](#) | [Support](#) | [Community](#) | [Resources](#) | [About Us](#) | [Legal](#)