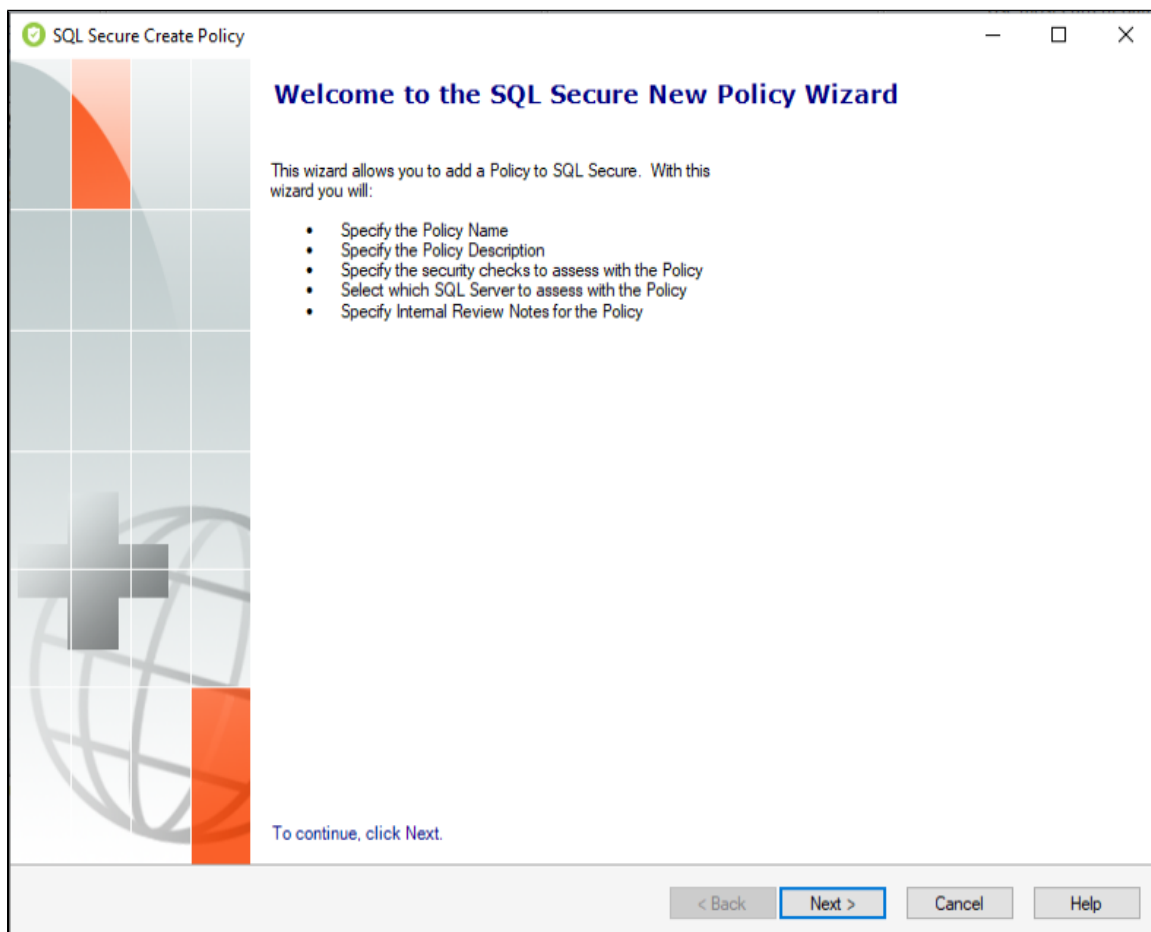


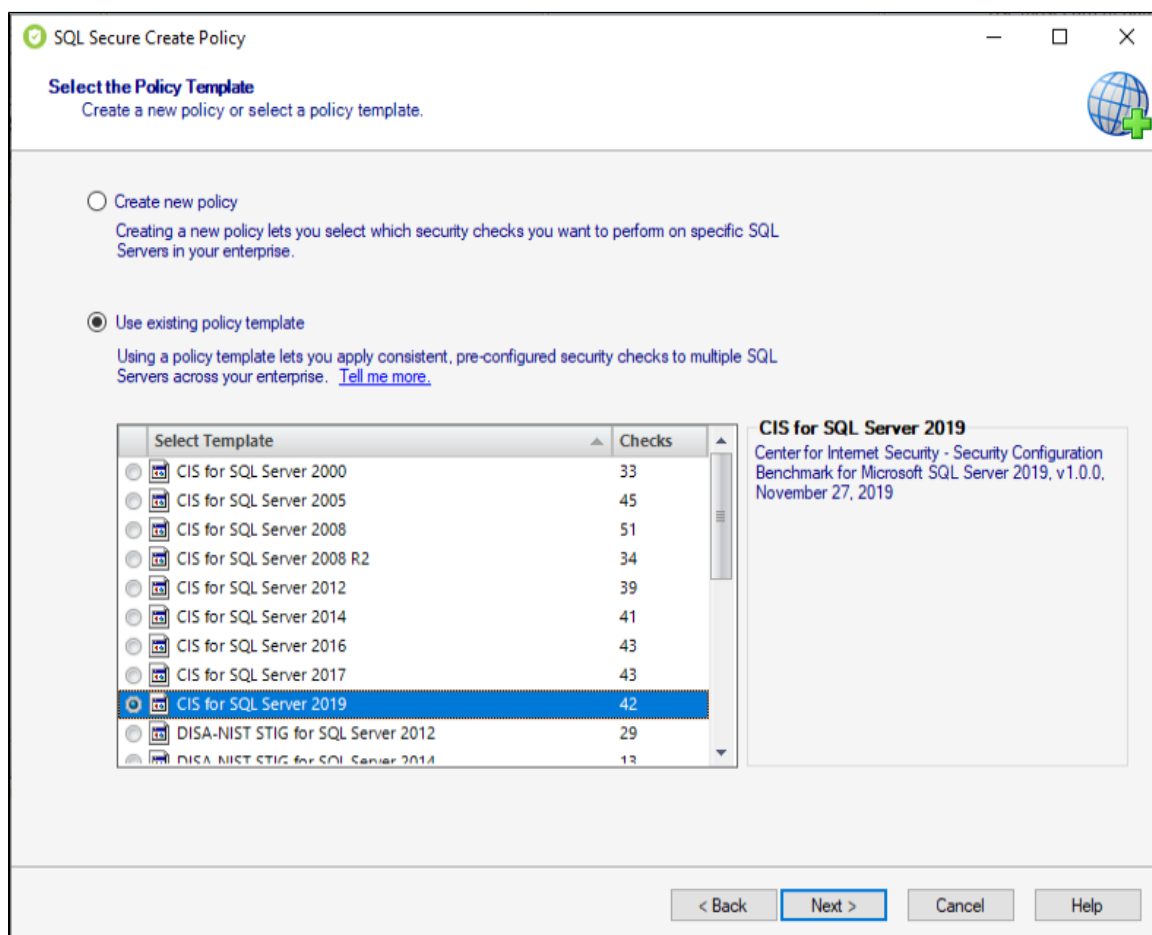
Select policy template

When you open the **Create Policy** wizard in IDERA SQL Secure, the Welcome window of this wizard opens, click **Next** to access the first section: **Select the Policy Template**.



The **Select the Policy Template** section allows you to choose between:

- Create a new policy
- Use existing policy template



Policy templates are boilerplate policies whose security check definitions reflect known industry regulations and security best-practices. Although, you may choose to start with a template, you can later add, edit, or remove security checks as needed. For more information, see how [policy templates](#) can help you achieve your SQL Server security goals.

You can also create policy templates by exporting configuration settings from a specific policy to an XML file. Then, you can later reuse these settings by creating new policies based on this template. For more information, see [Import Policy](#).

Click **Next** to go to the [Name the Policy](#) section.

IDERA | [Products](#) | [Purchase](#) | [Support](#) | [Community](#) | [Resources](#) | [About Us](#) | [Legal](#)