


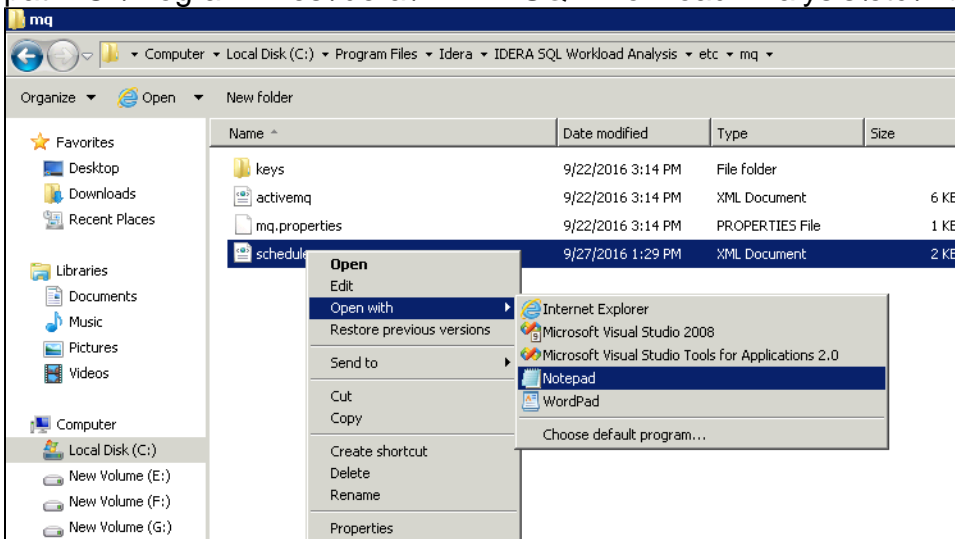
## Set your SQL Workload Analysis grooming schedule

Grooming is the process of deleting metrics stored in the repository that are older than a given date and time. This process is important because it optimizes the performance of processes such as data collection.

 When running an upgrade from SQLWA 1.6.3 version and above, the installer runs a clean-up routine before restarting the services.

In SQL Workload Analysis you can set your grooming schedule by following these steps:

1. Open the **schedule** file in a text editor such as Notepad, this file is located in the following path: C:\Program Files\Idera\IDERA SQL Workload Analysis\etc\mq

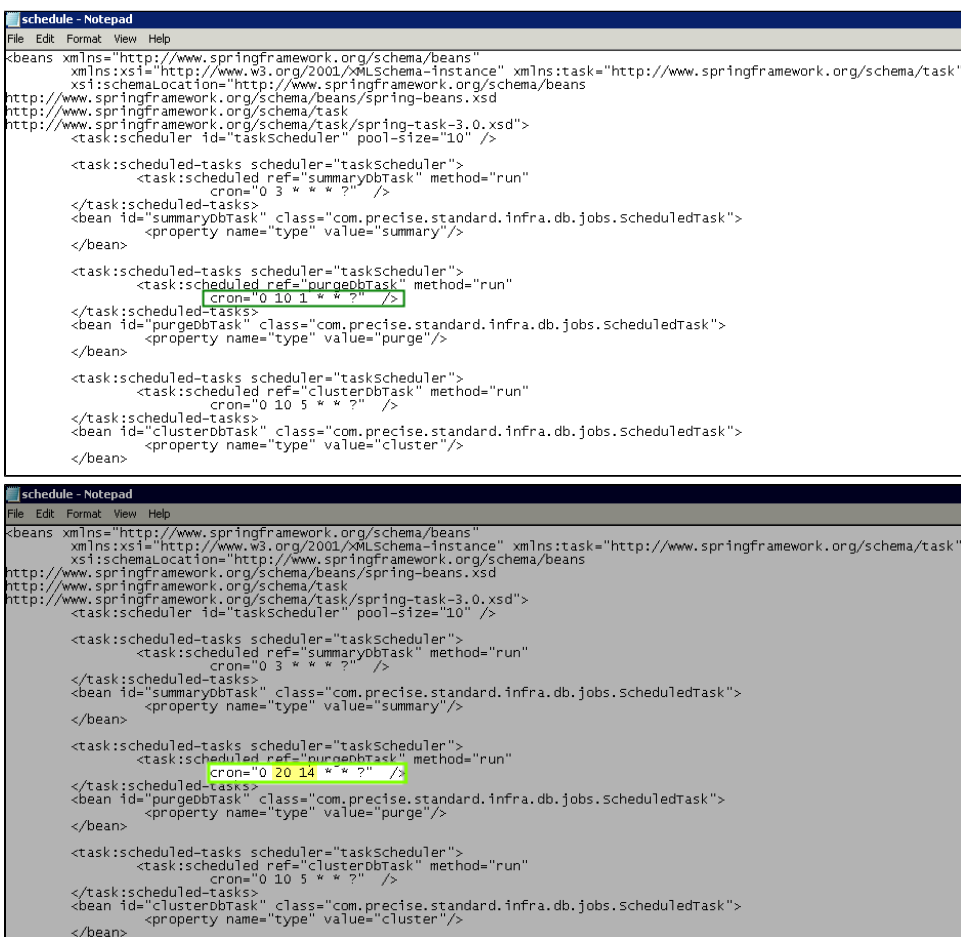


2. Search for the line that specifies the purge schedule in a standard cron format and edit the time value in a 24-hour format. For example, if you want to set your grooming for 8:00 PM of the 14th day of the month, the cron should be set at: **0 20 14 \* \*** in a standard cron format. Check the images below.



### Default grooming time

By default, the grooming schedule time is set at 10:00 AM on the 1st day of the month.



```

schedule - Notepad
File Edit Format View Help
<beans xmlns="http://www.springframework.org/schema/beans"
  xmlns:xsi="http://www.w3.org/2001/XMLSchema-instance" xmlns:task="http://www.springframework.org/schema/task"
  xsi:schemaLocation="http://www.springframework.org/schema/beans
http://www.springframework.org/schema/beans/spring-beans.xsd
http://www.springframework.org/schema/task
http://www.springframework.org/schema/task/spring-task-3.0.xsd">
  <task:scheduler id="taskScheduler" pool-size="10" />

  <task:scheduled-tasks scheduler="taskScheduler">
    <task:scheduled ref="summaryDbTask" method="run"
      cron="0 3 * * ?" />
  </task:scheduled-tasks>
  <bean id="summaryDbTask" class="com.precise.standard.infra.db.jobs.ScheduledTask">
    <property name="type" value="summary"/>
  </bean>

  <task:scheduled-tasks scheduler="taskScheduler">
    <task:scheduled ref="purgeDbTask" method="run"
      cron="0 10 1 * * ?" />
  </task:scheduled-tasks>
  <bean id="purgeDbTask" class="com.precise.standard.infra.db.jobs.ScheduledTask">
    <property name="type" value="purge"/>
  </bean>

  <task:scheduled-tasks scheduler="taskScheduler">
    <task:scheduled ref="clusterDbTask" method="run"
      cron="0 10 5 * * ?" />
  </task:scheduled-tasks>
  <bean id="clusterDbTask" class="com.precise.standard.infra.db.jobs.ScheduledTask">
    <property name="type" value="cluster"/>
  </bean>
</beans>

schedule - Notepad
File Edit Format View Help
<beans xmlns="http://www.springframework.org/schema/beans"
  xmlns:xsi="http://www.w3.org/2001/XMLSchema-instance" xmlns:task="http://www.springframework.org/schema/task"
  xsi:schemaLocation="http://www.springframework.org/schema/beans
http://www.springframework.org/schema/beans/spring-beans.xsd
http://www.springframework.org/schema/task
http://www.springframework.org/schema/task/spring-task-3.0.xsd">
  <task:scheduler id="taskScheduler" pool-size="10" />

  <task:scheduled-tasks scheduler="taskScheduler">
    <task:scheduled ref="summaryDbTask" method="run"
      cron="0 3 * * ?" />
  </task:scheduled-tasks>
  <bean id="summaryDbTask" class="com.precise.standard.infra.db.jobs.ScheduledTask">
    <property name="type" value="summary"/>
  </bean>

  <task:scheduled-tasks scheduler="taskScheduler">
    <task:scheduled ref="purgeDbTask" method="run"
      cron="0 20 14 * * ?" />
  </task:scheduled-tasks>
  <bean id="purgeDbTask" class="com.precise.standard.infra.db.jobs.ScheduledTask">
    <property name="type" value="purge"/>
  </bean>

  <task:scheduled-tasks scheduler="taskScheduler">
    <task:scheduled ref="clusterDbTask" method="run"
      cron="0 10 5 * * ?" />
  </task:scheduled-tasks>
  <bean id="clusterDbTask" class="com.precise.standard.infra.db.jobs.ScheduledTask">
    <property name="type" value="cluster"/>
  </bean>
</beans>

```

- Restart the SQL Workload Analysis services (IDERA Collector Service and IDERA Framework service).

[IDERA](#) | [Products](#) | [Purchase](#) | [Support](#) | [Community](#) | [Resources](#) | [About Us](#) | [Legal](#)