

# Monitor databases

SQL Diagnostic Manager allows you to monitor your database backups, restores, table sizes, table row counts, configurable options, and replication status. SQL Diagnostic Manager provides a graphical analysis of the used, unused, and index disk space of the database. You can also view the size and structure of database tables. SQL Diagnostic Manager provides a list of data size, text or image size, index page size, and the number of table rows, making reorganization and index creation decisions easy.

The following concepts are important to understand when using the Databases tab:

## Percentage of Database/Log Full

The **%Data Full** and **%Log Full** columns on the Database Summary and Database Files views refer to the current space used as a percentage of the potential maximum available space. The larger the number the closer you are to running out of space. These columns can have associated alert thresholds.

## Potential Maximum Available Space

The **Data Potential Growth** and **Log Potential Growth** columns on the Database Summary and Database Files views refer to the currently allocated space plus the available expansion space.

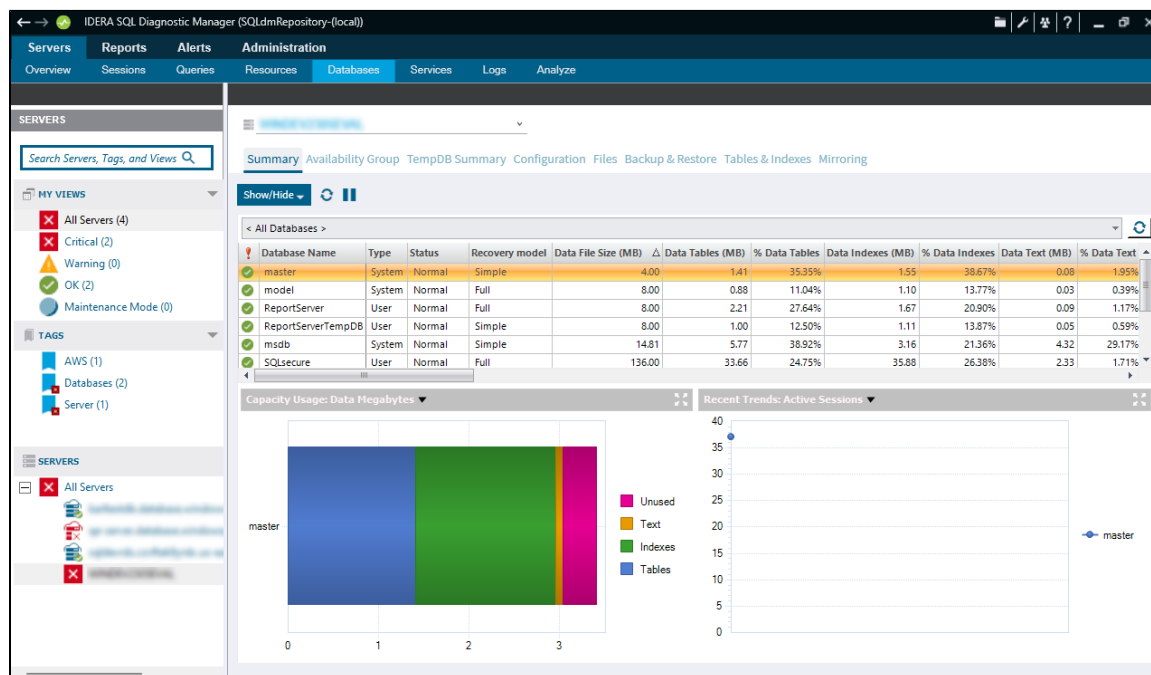
## Available Expansion Space

Available Expansion Space refers to the available disk space that files can grow into as determined by the growth settings for the files, the location of the files, and the free space on those disks.

Multiple database files as well as files from other databases can potentially compete for space on the same disk. For example, if the data and log files for several databases are on the same disk and the data file of one database expands, the available expansion space for all database files on the disk is immediately reduced.

# Access the Databases tab

Access this view by clicking the appropriate server and selecting the Databases tab.



# Alerts associated with the Databases tab

The following alerts are associated with the Databases tab:

## Database Full (Percent)

Percentage of the allowable disk space for the database currently used by the sum of data, text, and index. Allowable disk space for the database is calculated by considering the currently allocated space, auto-growth settings, and available disk space.

## Database Read/Write Error Occurred

Failure to read from or write to the hard disk.

## Database Status

Multiple types of [Database Status](#) alerts exist.

## Index Row hits (Percent)

The number of rows hit that part of a clustered index or an entire non-clustered index returns, indicating index effectiveness.

## Log Full (Percent)

Percentage of the allowable disk space for the database currently used by the transaction log. Allowable disk space for the database is calculated by taking the currently allocated space, auto-growth settings, and available disk space.

## Table Fragmentation (Percent)

Percentage of pages that are fragmented in each table in the database.