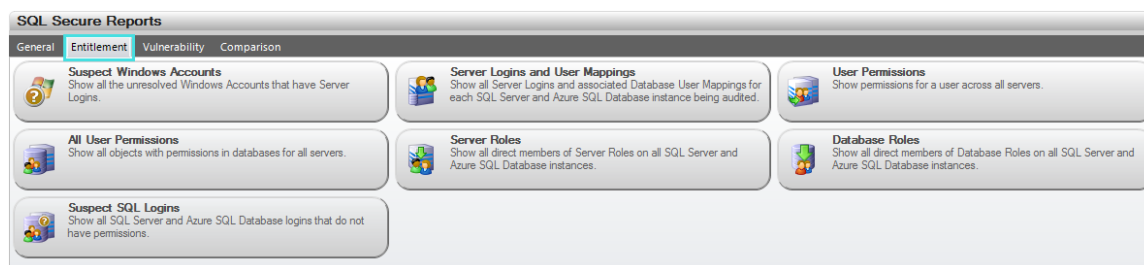


# Entitlement reports



Among the available reports you can find the following ones:

Report Name	Report Description
<a href="#">Suspect Windows Accounts</a>	Displays all the suspect Windows Accounts that have Server Logins or Server Files Permissions. For more information, see <a href="#">Suspect Windows accounts</a> .
<a href="#">Suspect SQL Logins</a>	Displays all the suspect SQL Server Accounts that do not have any assigned permissions, i.e. databases, objects, or server files.
<a href="#">Server Logins and User Mappings</a>	Displays all Server Logins and associated Database User Mappings for each SQL Server instance being audited
<a href="#">User Permissions</a>	Displays permissions for a user across all SQL Server instances
<a href="#">All User Permissions</a>	Displays all objects with permissions in the database for all SQL Server instances
<a href="#">Server Roles</a>	Displays all direct members of Server Roles on all SQL Server instances
<a href="#">Database Roles</a>	Displays all direct members of Database Roles on all SQL Server instances

[IDERA](#) | [Products](#) | [Purchase](#) | [Support](#) | [Community](#) | [Resources](#) | [About Us](#) | [Legal](#)