

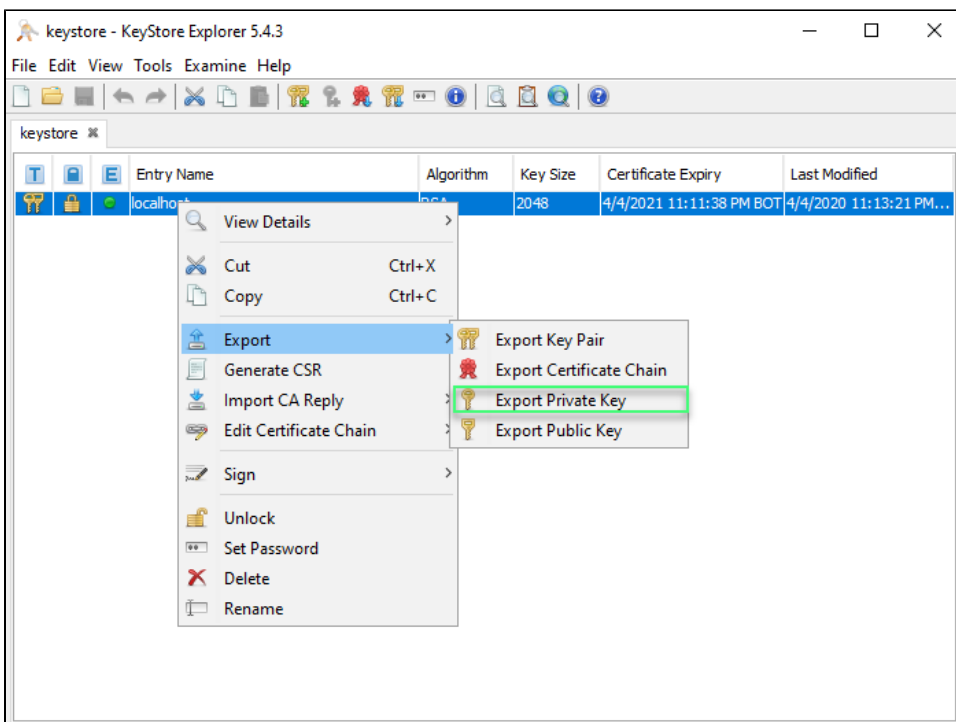
# Binding a certificate for SQL Diagnostic Manager

These instructions applied when SQLDM and Dashboard are installed on a local environment and they are the continuation of the [Resolving Dashboard certificate error message](#), which means that the Dashboard certificate was already created.

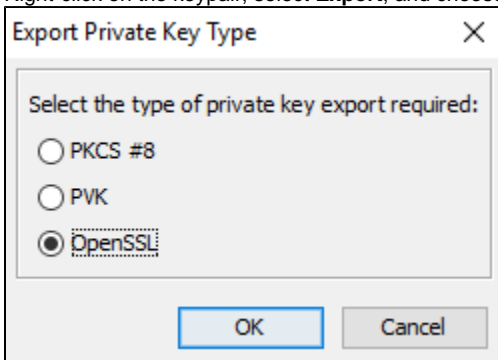
If you have not installed [KeyStore Explorer](#), download it, and install the application.

## Dashboard and SQL Diagnostic Manager installed on the same server

1. Launch the KeyStore Explorer application, as an Administrator.
2. Open the keystore file used for the IDERA Dashboard. When prompted for a password, enter "password", and click **OK**.

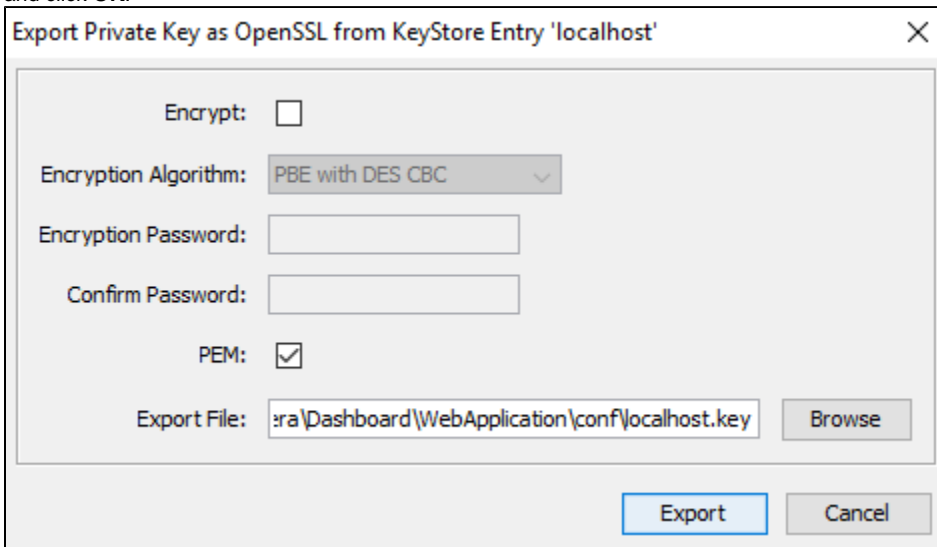


3. Right-click on the keypair, select **Export**, and choose **Export Private Key**.



4. When the Unlock Entry for the Keypair prompts, enter "password", and click **OK**.
5. On the Export Private Key Type window, select OpenSSL, and click **OK**.

6. On the Export Private Key as OpenSSL from Keystore Entry window, deselect the Encrypt option, update the Export File field if needed, and click **OK**.



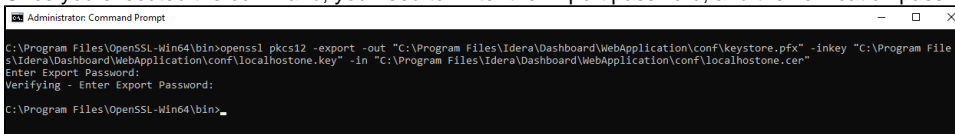
7. Install OpenSSL, you can find the available options for this software [OpenSSL](#). Once the installation is complete, launch the Command Prompt with elevated permissions.
8. Change the directory to the bin folder where the OpenSSL was installed. For example, enter the following command to change the directory:

```
cd "C:\Program Files\OpenSSL-Win64\bin"
```

9. Use the following command as an example to generate the PFX key using the private key and certificate that you previously created.
- "openssl pkcs12 -export -out <file path to the new personal information exchange file>.pfx -inkey <file path path to the private key>.key -in <file path to the certificate>.cer"*

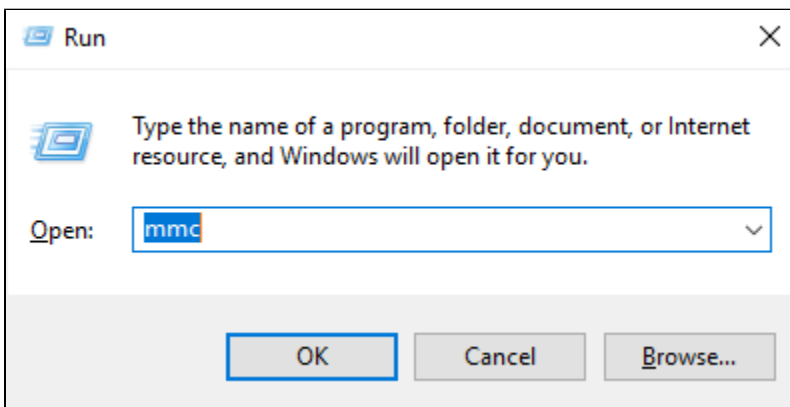
```
openssl pkcs12 -export -out "C:\Program Files\Idera\Dashboard\WebApplication\conf\keystore.pfx" -inkey "C:\Program Files\Idera\Dashboard\WebApplication\conf\localhostone.key" -in "C:\Program Files\Idera\Dashboard\WebApplication\conf\localhostone.cer"
```

Once you executed the command, you need to Enter the Export password, and the verification password:

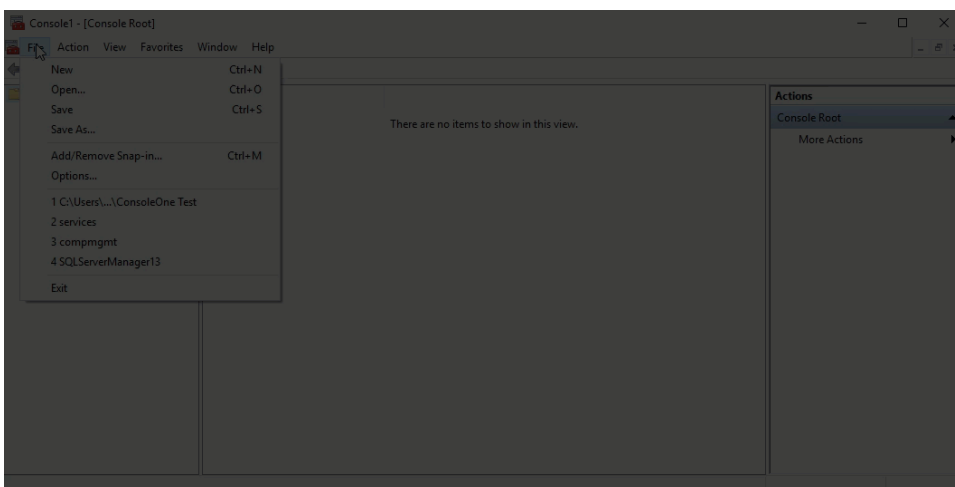


The PFX key has been created as a result of the command.

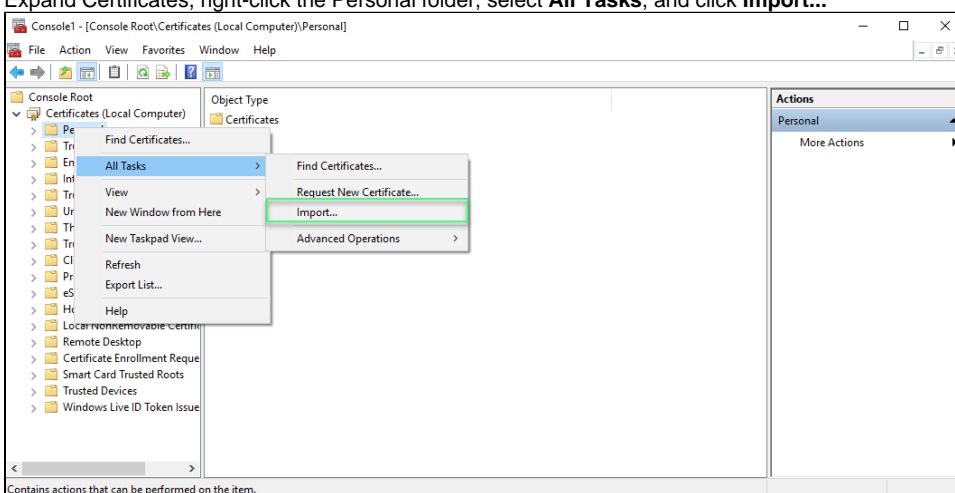
10. Open the Microsoft Management Console (MMC) by selecting Run from the Start menu, enter "mmc", and click **OK**.



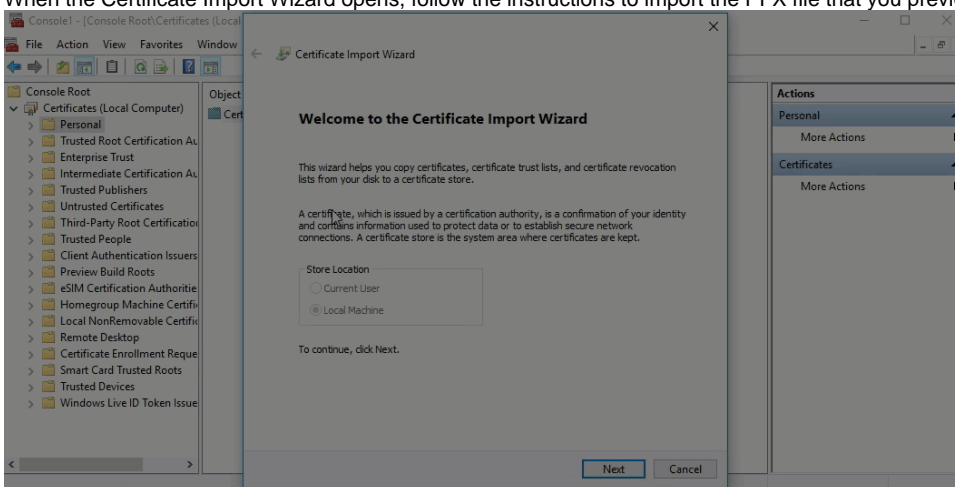
- When the MMC window opens, click **File** from the menu toolbar, and select **Add/Remove Snap-in...**
- The Add or Remove Snap-ins window opens, **Add** Certificates, and click **OK**.
- In the Certificates snap-in window, select Computer Account, and select **Next**.
- In the Select Computer Window, make sure Local Computer is selected, and click **Finish**.
- Close the Add or Remove Snap-in window by clicking **OK**.



11. Expand Certificates, right-click the Personal folder, select **All Tasks**, and click **Import...**



12. When the Certificate Import Wizard opens, follow the instructions to import the PFX file that you previously created.



13. Retrieve the thumbprint of the imported PFX key.
  - a. Double-click the imported PFX key.
  - b. On the Certificate window, go to the Details tab.
  - c. Scroll-down and click Thumbprint. You need to copy the characters from the box.



If the thumbprint has extra spaces between the hexadecimal numbers, remove them. For example, the thumbprint ""a9 09 50 2d d8 2a e4 14 33 e6 f8 38 86 b0 0d 42 77 a3 2a 7b"" should be edited to ""a909502dd82ae41433e6f83886b00d4277a32a7b"".

14. Follow these last steps to bind the new PFX key by using the commands below:
- Open CMD as an Administrator, execute the following command to delete existing bindings to the IDERA SQL Diagnostic Manager Rest Service:

```
netsh http delete ssl 0.0.0.0:5171
```

- Bind the PFX key by using the following command in an elevated command prompt session:



## GUID

The GUID for SQL Diagnostic Manager is "{0051d7ed-de72-46d3-ae44-97d566b1ca5a}".

```
netsh
http
add sslcert ipport=0.0.0.0:5171 certhash="<thumbprint of the PFX Key (remove spaces between)>"
appid="{0051d7ed-de72-46d3-ae44-97d566b1ca5a}" clientcertnegotiation=enable
```