

View past performance

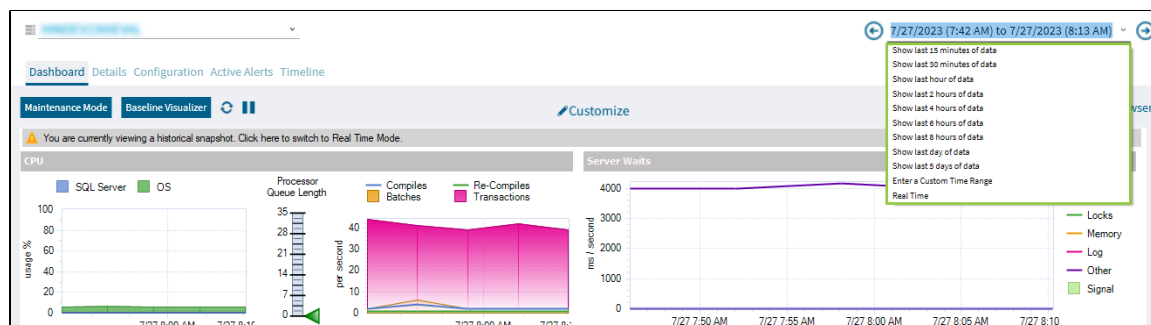
The History Browser is intended to provide information about the state of your SQL Server instance at the time a standard snapshot is taken. You can use this information to diagnose and resolve issues to keep the issue from happening again. The History Browser allows you to select a historical snapshot collected by the standard refresh and view the data that was collected using almost all the SQL Diagnostic Manager real-time views.

i By default, Session details and inactive alerts are stored for 31 days while standard metric information is stored for 365 days. You can edit these options on the [Grooming Options](#) window.

Historical Snapshot drop-down

SQL Diagnostic Manager has a historical snapshot drop-down in the top-right corner, the drop-down allows you to retrieve faster historical and real-time data. The following options are available for data retrieval:

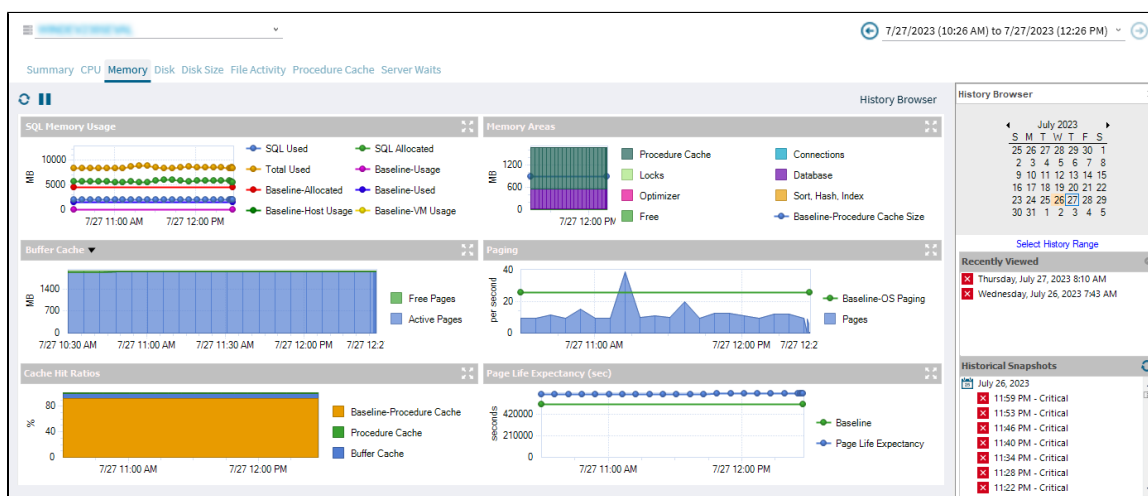
- Real Time
- Show last 15 minutes of data
- Show last 30 minutes of data
- Show last hour of data
- Show last 2 hours of data
- Show last 4 hours of data
- Show last 6 hours of data
- Show last day of data
- Show last 5 days of data
- Enter a Custom Time Range



Select a specific snapshot in time in the History Browser

To select a specific snapshot:

1. Open the History Browser.
2. Select the date from the calendar. You can also select the time range to filter the number of snapshots displayed.
3. Select the corresponding snapshot from the Historical Snapshots list.



The icons next to each snapshot represent the highest level of alert thresholds violated. These icons can help you identify a specific snapshot. In addition, you can hover over snapshots in the list to see the most critical alerts associated with the snapshot.

The alert status listed by snapshots in the History Browser may not reflect the latest status due to delays in writing history to the repository. This status corrects eventually in the History Browser.

Alerts with associated views that support historical snapshots

On the Alerts view, some of the alerts allow you to retrieve the associated view when the alert is activated. To access this view, right-click the alert and click **Show Historical View** in the **Details** pane.

The following table displays a list of alerts that provide an associated view in SQL Diagnostic Manager.

Alert	Associated View
Average Disk Milliseconds Per Read	Resources
Average Disk Milliseconds Per Transfer	Resources
Average Disk Milliseconds Per Write	Resources
Blocked Sessions (Count)	Sessions
Blocking Session Wait Time (Seconds)	Sessions
Client Computers (Count)	Sessions
Databases Read/Write Errors Occurred	Databases
Disk Reads Per Second	Resources
Disk Transfers Per Second	Resources
Disk Writes Per Second	Resources
Host CPU Usage (Percent)	Resources
Host Memory Usage (Percent)	Resources
Oldest Open Transactions (Minutes)	Sessions
OS Average Disk Queue Length (Count)	Resources
OS Average Disk Queue Length Per Disk (Count)	Resources
OS Disk Time (Percent)	Resources

OS Disk Time Per Disk (Percent)	Resources
OS Memory Usage (Percent)	Resources
OS Paging (Per Second)	Resources
OS Privileged Time (Percent)	Resources
OS Processor Queue Length (Count)	Resources
OS Processor Time (Percent)	Resources
Page Life Expectancy	Server
Session CPU Time (Seconds)	Sessions
SQL Server CPU Usage (Percent)	Resources
SQL Server Memory Usage (Percent)	Resources
SQL Server Response Time (Milliseconds)	Sessions
Tempdb Contention (ms)	Databases
User Connections (Percent)	Sessions
VM CPU Usage (Percent)	Resources
VM Memory Usage (Percent)	Resources

Views that support historical snapshots

Users may notify you of SQL Server problems that have happened in the past. Using the History Browser, you can go back to a point in time and view the state of your system and also compare system states at different points in time.

The following views support historical snapshots:

- Overview > Dashboard
- Overview > Details
- Overview > Active Alerts
- Sessions > Summary
- Sessions > Details
- Sessions > Locks
- Sessions > Blocking
- Queries > Signature Mode
- Queries > Statement Mode
- Queries > Query History
- Queries > Query Waits
- Resources > Summary
- Resources > CPU
- Resources > Memory
- Resources > Disk
- Resources > File Activity
- Resources > Server Waits
- Databases > Tempdb Summary
- Databases > Availability Group
- Analyze > History