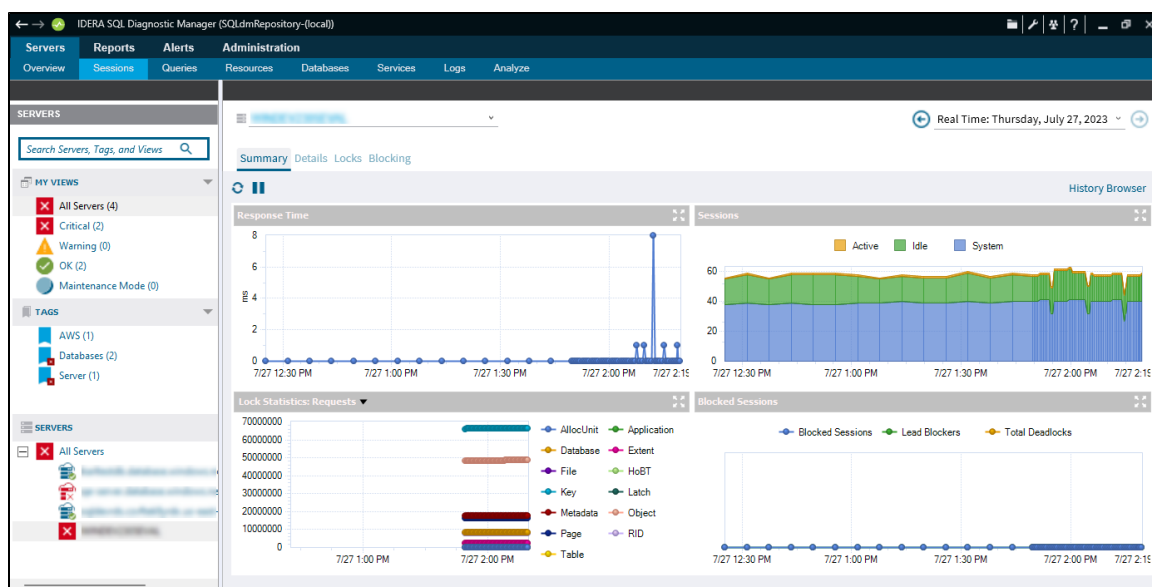


Monitor sessions

The Sessions tab contains the following views:

- **Summary:** You can view charts for each Sessions statistic, the following charts are displayed in the Summary tab:
 - Response Time
 - Sessions
 - Lock Statistics: Average Wait Time, Deadlocks, Requests, Timeouts, Waits, and Wait Time
 - Blocked Sessions
- **Details:** Allows you to create charts with the specific data items you need.
- **Locks:** Allows you to create charts based on each lock present on your SQL Server.
- **Blocking:** Allows you to create charts specific to all the Blocking sessions.



The Sessions tab provides the following options:

- The ability to diagnose performance bottlenecks caused by blocking or locked sessions.
- The ability to trace specific sessions to see why the session may be blocked or locked.
- The ability to kill sessions to improve system performance.

Access the Sessions tab

Access the Sessions tab by clicking the appropriate monitored SQL Server instance and clicking the Sessions tab.

Alerts associated with the Sessions tab

The following alerts are associated with the Sessions tab:

Blocked Sessions (Count)

The number of sessions blocked by other sessions holding requested locks.

Blocking Session Wait Time (Seconds)

The amount of time (in seconds) that a SQL Server session is blocking other sessions.

Client Computers (Count)

The number of unique client computers connected to the instance.

Deadlock

Refers to when two processes are waiting for a resource held by the other process.

Oldest Open Transaction (Minutes)

Displays the longest amount of time between a transaction using a Being Transaction statement and the corresponding Commit Transaction or Rollback Transaction statement, in minutes.

Query Monitor Events (Count)

The number of queries captured by Query Monitor on the monitored SQL Server instance during the last scheduled refresh.

Session CPU Time (Seconds)

Provides the CPU time (in seconds) used by SQL Server sessions.

SQL Server Response Time (Milliseconds)

Calculates the sum of the response time (in milliseconds) to send a batch of SQL statements to the server, process the query, and return the results to the SQL Diagnostic Manager Console.

User Connections (Percent)

The percentage of user connections allowed that are currently used.