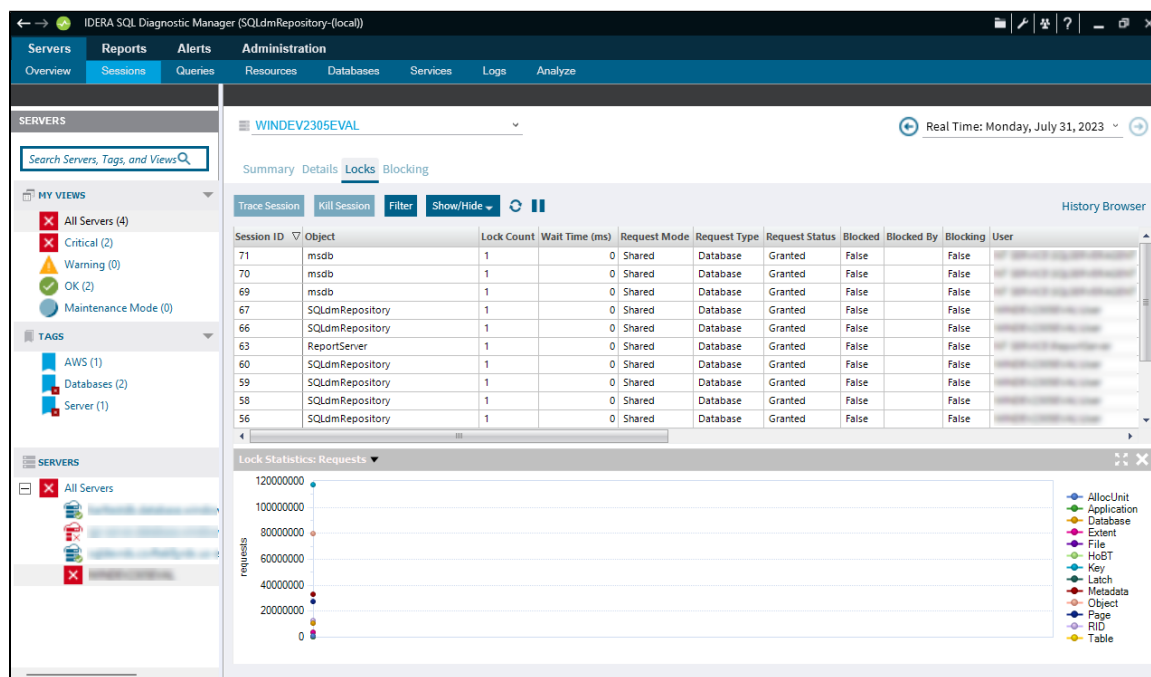


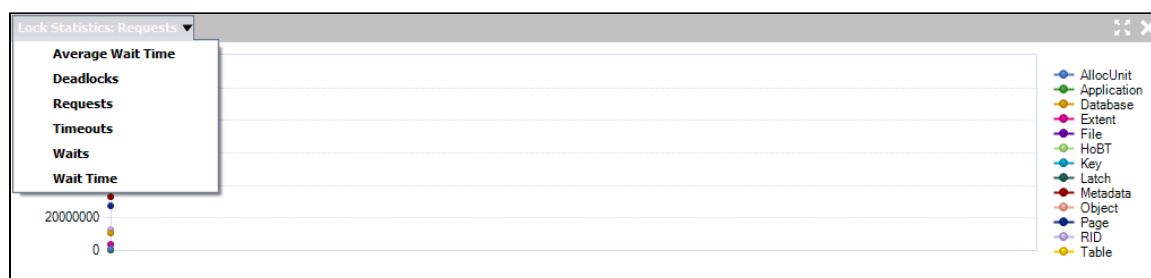
Analyze locked sessions

The Locked Sessions view shows which problem locks are causing data availability problems and unacceptable responses. Combining the information provided on the Problem Locks view (including the type of Lock) with the **Lock Statistics: Waits** chart on the Sessions Summary tab, you can pinpoint, correct, or reschedule automated applications that cause extensive row, table, or database locking.



Use the drop-down list in the chart title to select charts that include:

- Average Wait Time
- Deadlocks
- Requests
- Timeouts
- Waits
- Wait Time information



Right-click any of these charts and either print, save as an image, or export them to Microsoft Excel. In addition, you can select **Toolbar** for advanced customization options such as changing the chart color scheme and the type of chart shown.

Access the Locks view

You can open the Locks view of the SQL Diagnostic Manager Sessions tab by selecting the appropriate SQL Server instance and clicking **Sessions > Locks**.

Available SQL Server lock objects

The Lock Statistics chart includes the following objects:

AllocUnit

Represents a lock on an allocation unit.

Application

Represents a lock on an application-specific resource.

Database

Represents a lock on a database, including all objects in the database.

Extent

Represents a lock on a contiguous group of eight pages.

File

Represents a lock on a database file.

HoBT

(Heap or BTree) Represents a lock on a heap of data pages, or on the BTree structure of an index.

Key

Represents a lock on a row in an index.

Latch

Represents a lock on a latch.

Metadata

Represents a lock on a piece of catalog information, also called metadata.

Object

Represents a lock on an item such as a table, stored procedure, or view, including all data and indexes. The object represents anything that has an entry in sys.all_objects.

Page

Represents a lock on an 8 KB page in a database.

RID

(Row ID) Represents a lock on a single row in a heap.

Table

Represents a lock on a table.