

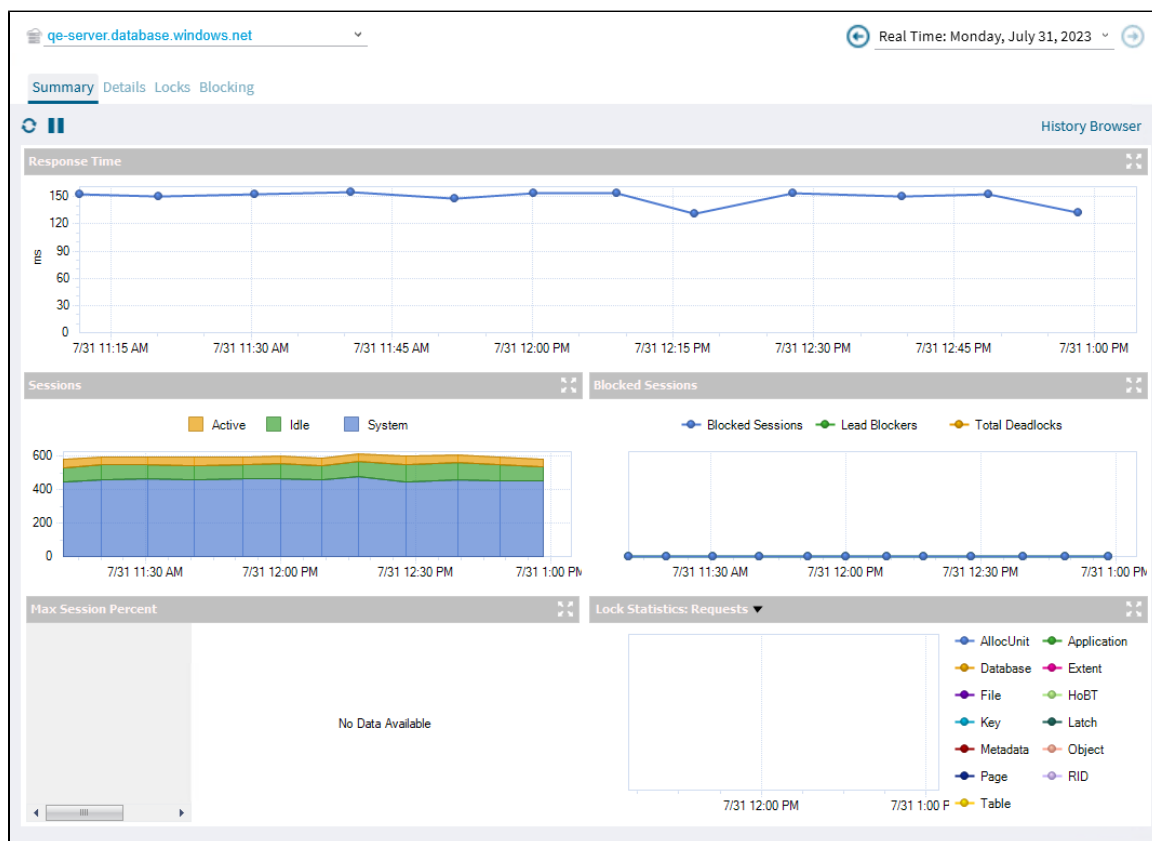
# Azure Sessions

The Sessions tab includes the Summary, Details, Locks, and Blocking screens.

## Summary

The Sessions Summary shows real-time charts for your monitored Azure SQL server, the following charts are displayed in this view:

- Response Time
- Sessions
- Blocked Sessions
- Max Session Percent
- Lock Statistic



## Details

The Sessions Details view provides an in-depth analysis of sessions running on your monitored Azure SQL server.

## Locks

On the Locked Sessions view, you can see which locks are causing data availability problems and unacceptable responses. At the bottom of the screen, the [Lock Statistics](#) chart has the same function as a non-cloud monitored server.

## Blocking

The Blocking view provides a blocking tree, along with Block Reports, and Deadlock Reports information. At the bottom of the screen, the Block Sessions chart represents the Blocked Sessions, Lead Blockers, and Total Deadlocks information.

[IDERA](#) | [Products](#) | [Purchase](#) | [Support](#) | [Community](#) | [Resources](#) | [About Us](#) | [Legal](#)