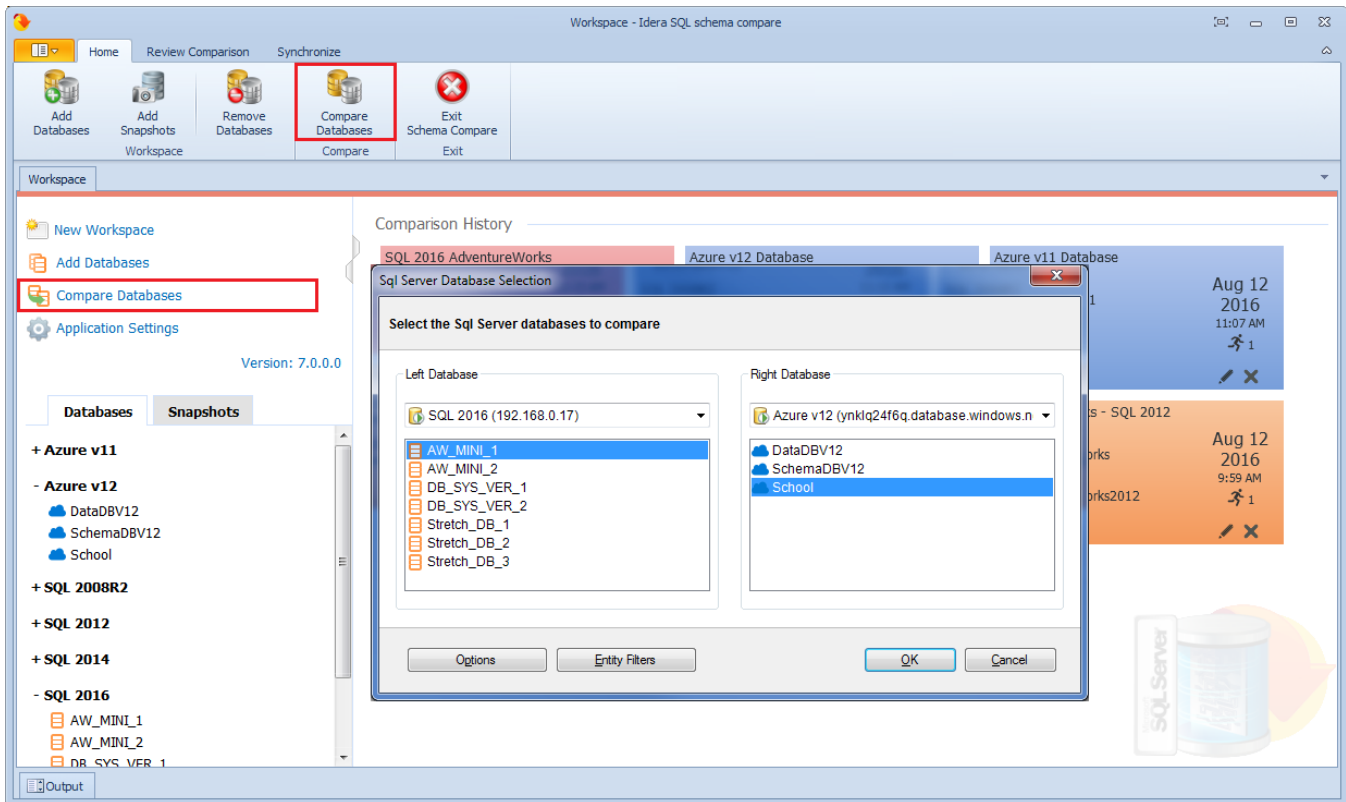


# SQL Schema Compare Comparing Schemas

To use SQL Schema Compare to start a comparison between two databases, click **Compare Databases** on the Home tab of the ribbon. The SQL Server Database Selection dialog window appears and allows you to choose the server(s) where the databases you wish to compare reside as well as the databases themselves.

From this window, you can also access the Comparison Options that will be applied during the comparison.



Total compare from data to schema with IDERA [SQL Comparison Toolset](#). [Learn more >>](#)

<a href="#">IDERA Website</a>	<a href="#">Products</a>	<a href="#">Purchase</a>	<a href="#">Support</a>	<a href="#">Community</a>	<a href="#">About Us</a>	<a href="#">Resources</a>	<a href="#">Legal</a>
-------------------------------	--------------------------	--------------------------	-------------------------	---------------------------	--------------------------	---------------------------	-----------------------