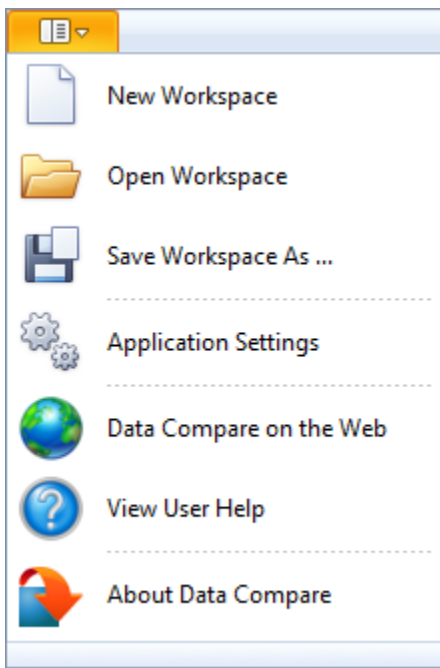


Saving and Loading Workspaces

Data Compare workspace stores the data in a set of xml files. There is always one master file that keeps SQL Server databases and credentials, and a separate xml file for each comparison session. The workspace is saved by default in a subfolder under the common folder for application data that is used by all users. It is usually found under \ProgramData\Idera\SQL comparison toolset\DataCompare\Workspace.

The workspace is managed automatically, so no action is required to save it or load it. However, if you wish to have multiple copies of the workspace, you can save it to a custom path. Functions for saving and loading the workspace are located in the quick menu of the application button:



i When you choose to save the workspace in a custom location, you specify the path and the name of the workspace master file. The session files will be saved in the same directory as the master file, but their names will be auto-generated. Similarly, when you load a workspace from a custom location, you select the workspace master file. Data Compare expects the session files to be in the same folder as the workspace master file.

IDERA Website	Products	Purchase	Support	Community	About Us	Resources	Legal
-------------------------------	--------------------------	--------------------------	-------------------------	---------------------------	--------------------------	---------------------------	-----------------------