

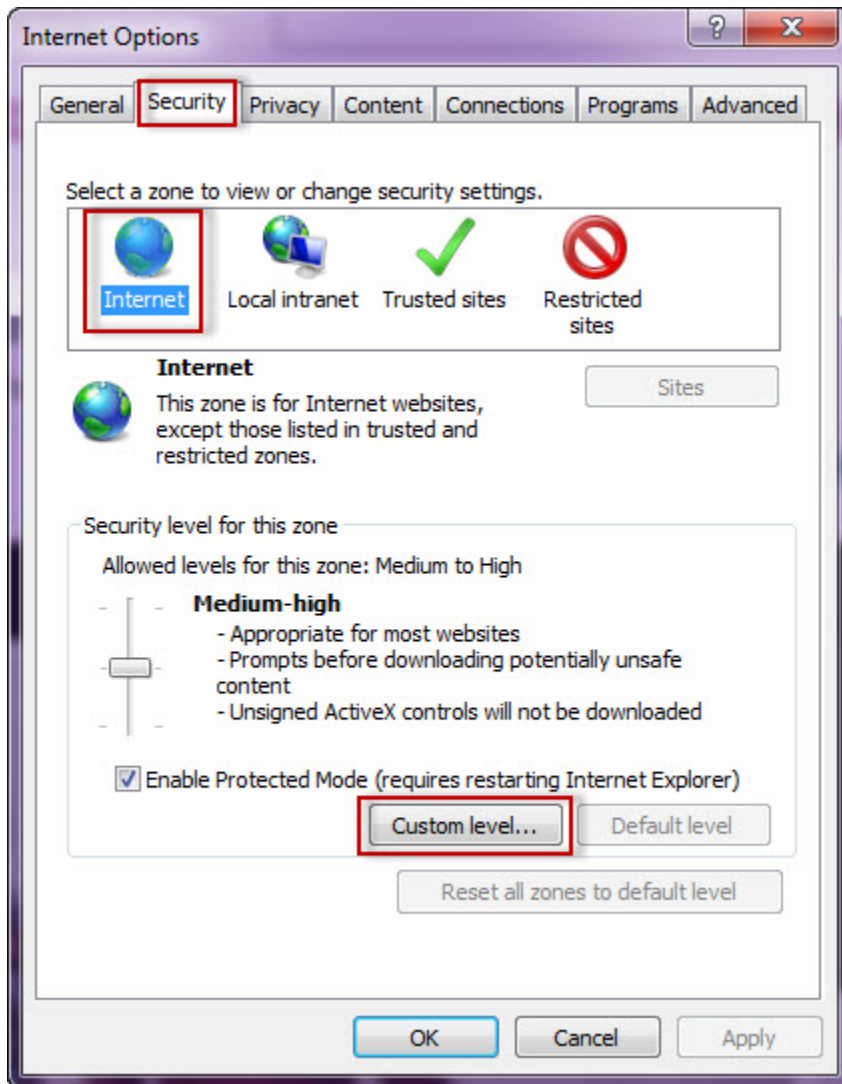
# Configuring your browser for Windows Authentication

In order to be able to use Windows Authentication to log into the IDERA Dashboard, you have to configure your browser settings.

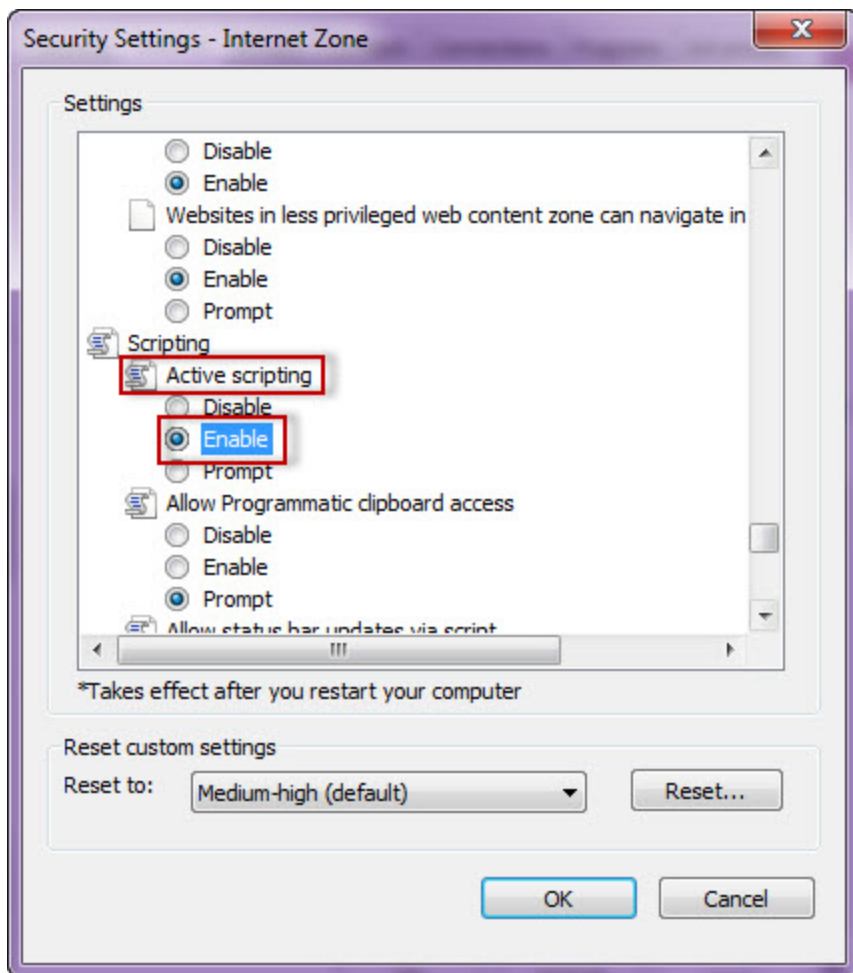
## Internet Explorer 9,10,11

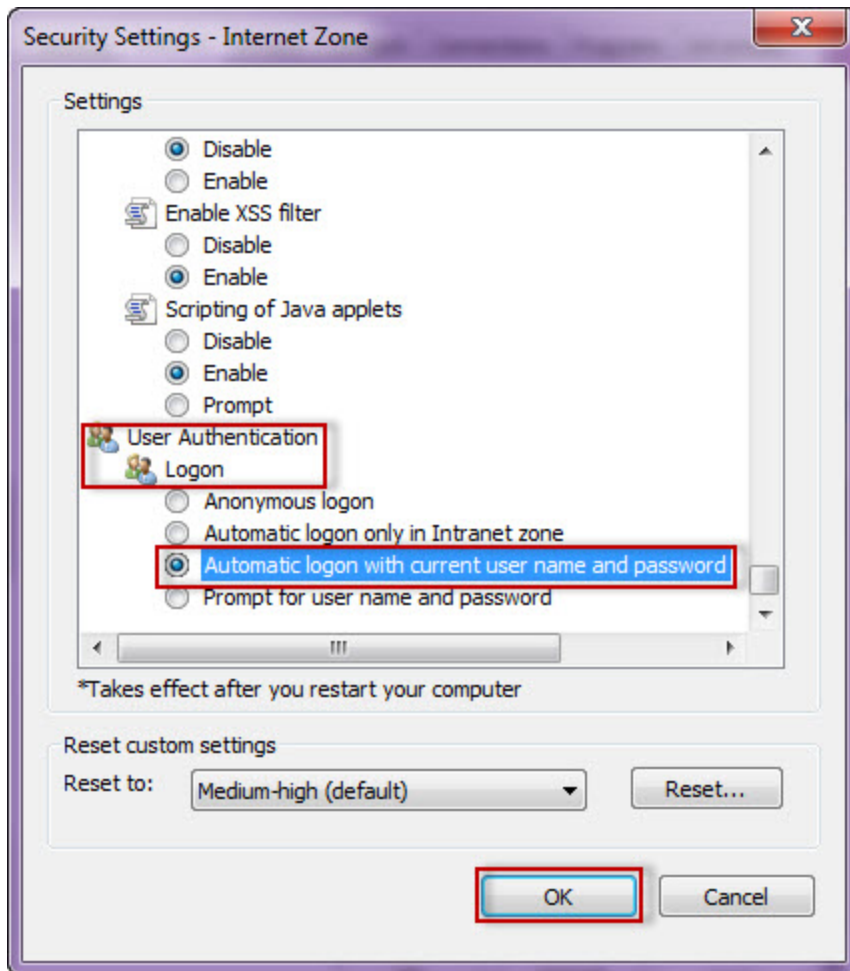
To configure these versions of **Internet Explorer** , follow these steps:

1. Go to **Internet Options**.
2. Click **Security**.
3. Click **Internet** and then **Custom Level**.

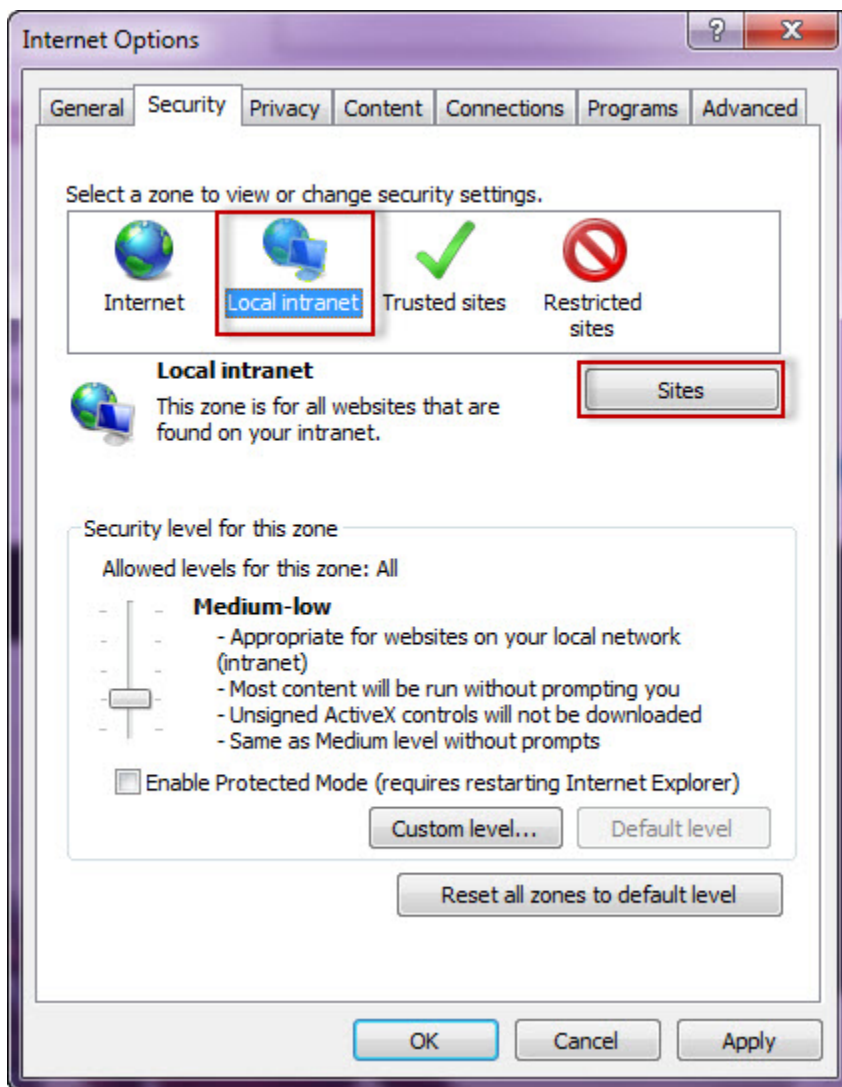


4. Go to Scripting/Active scripting and make sure **Enable** is selected.
5. Then go to User Authentication/Logon and make sure **Automatic logon with current user name and password** is selected.
6. Click **OK**.



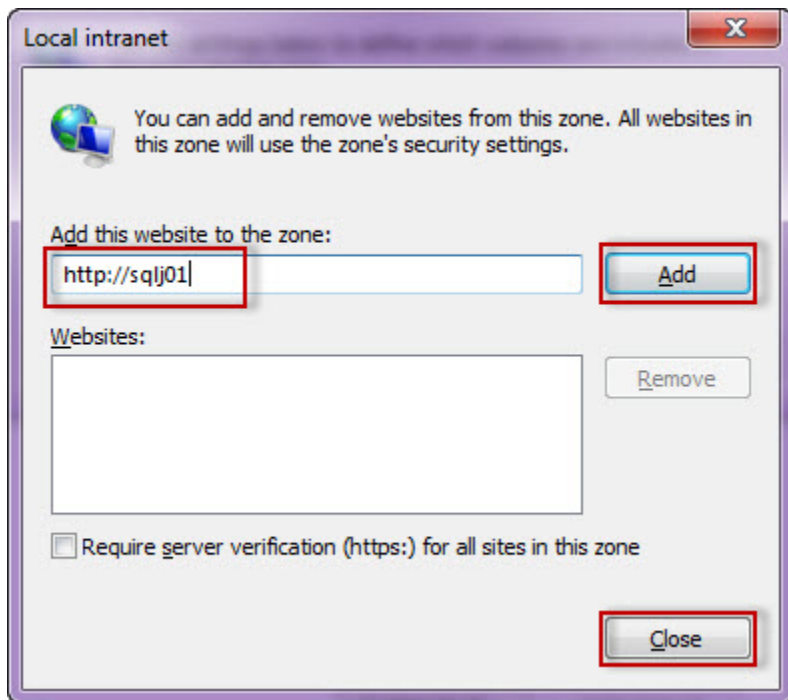


7. Click **Local intranet** and then **Sites**.



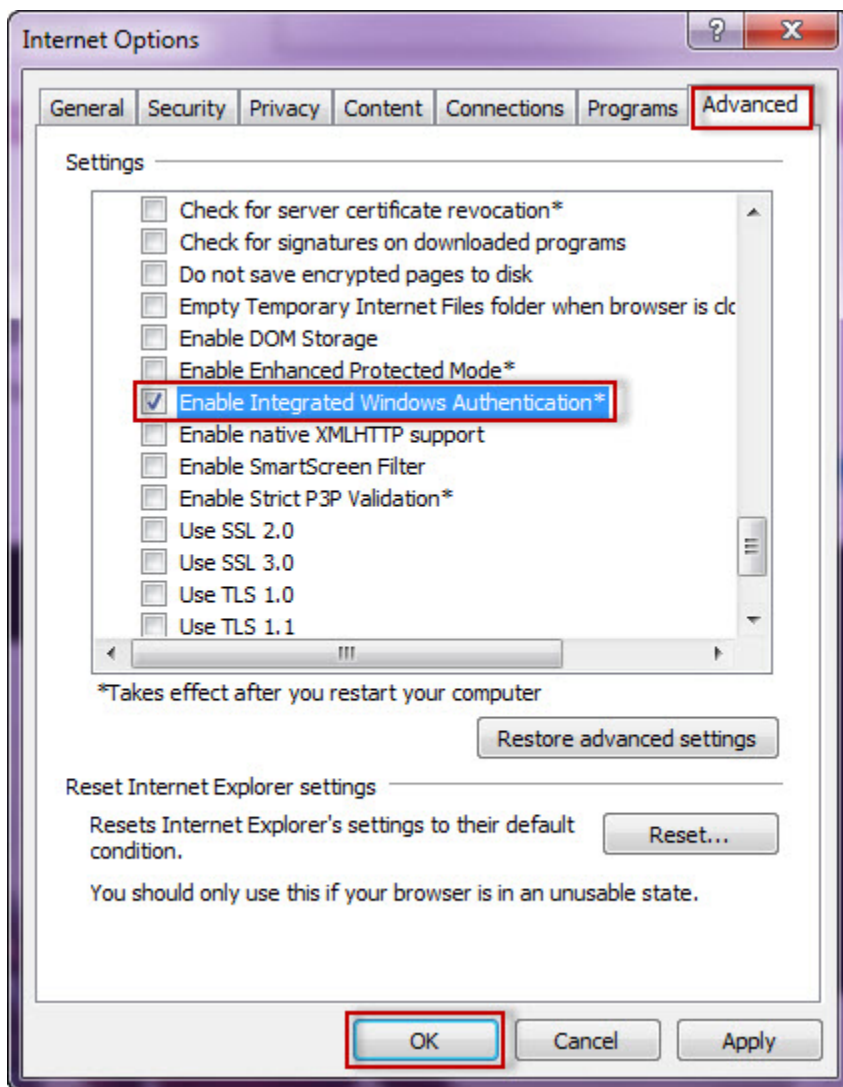
8. Type the URL you are going to use (e.g. `http://sqlj01`) and click **Add**.

9. Click **Close**.

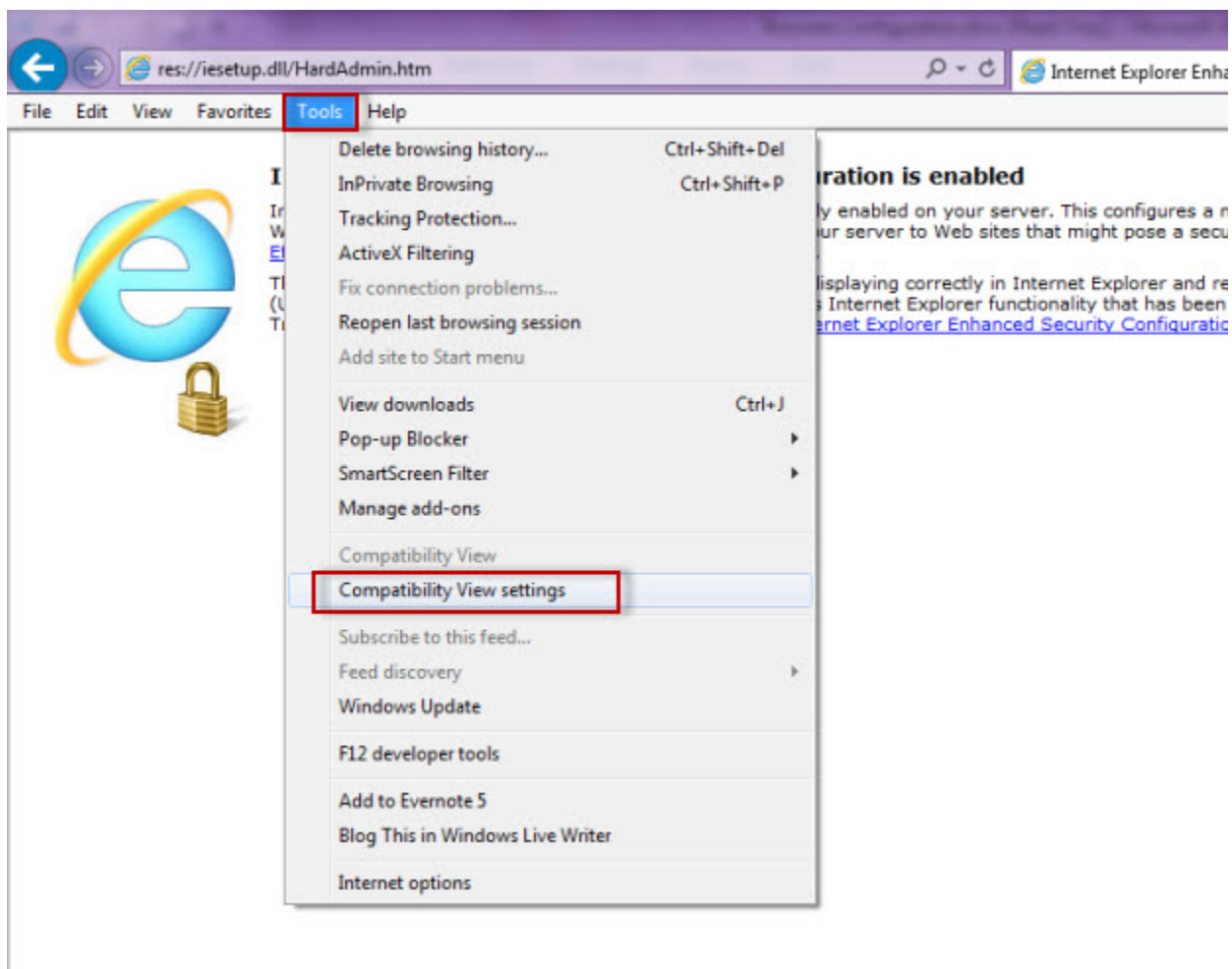


10. Go to **Advanced** and make sure **Enable Integrated Windows Authentication** is selected.

11. Click **OK**.

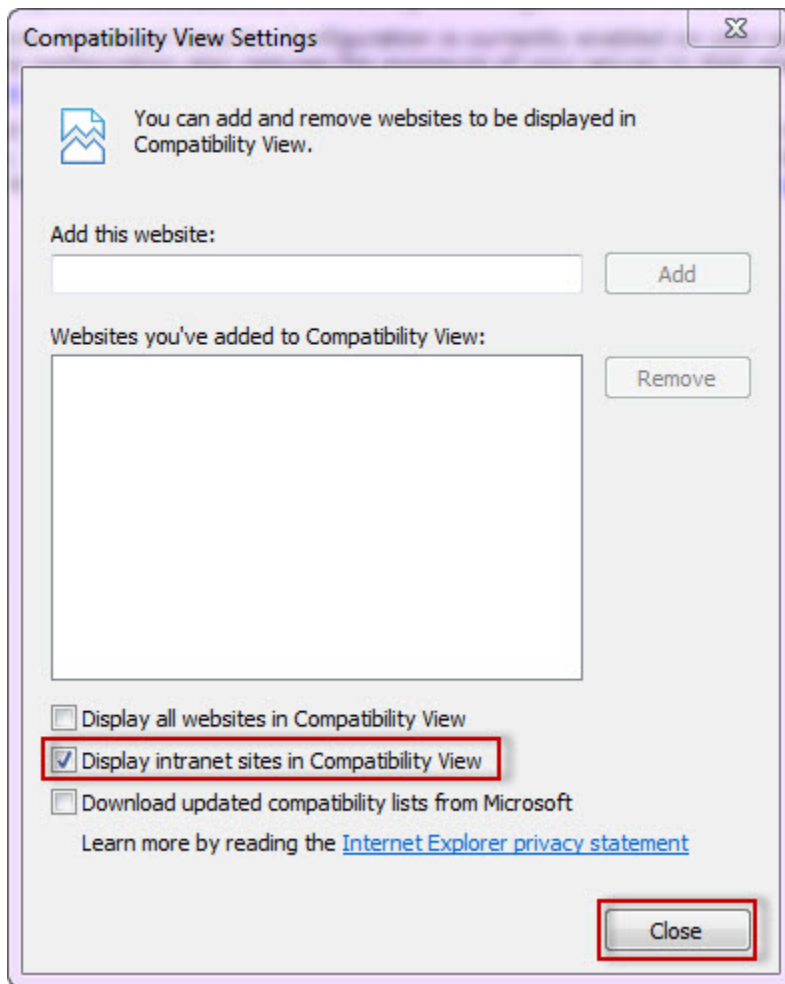


12. Go to **Tools** in the menu bar, and select **Compatibility View Settings**.



13. In the **Compatibility View Settings** window make sure **Display intranet sites in Compatibility View** is selected.

14. Click **Close**.



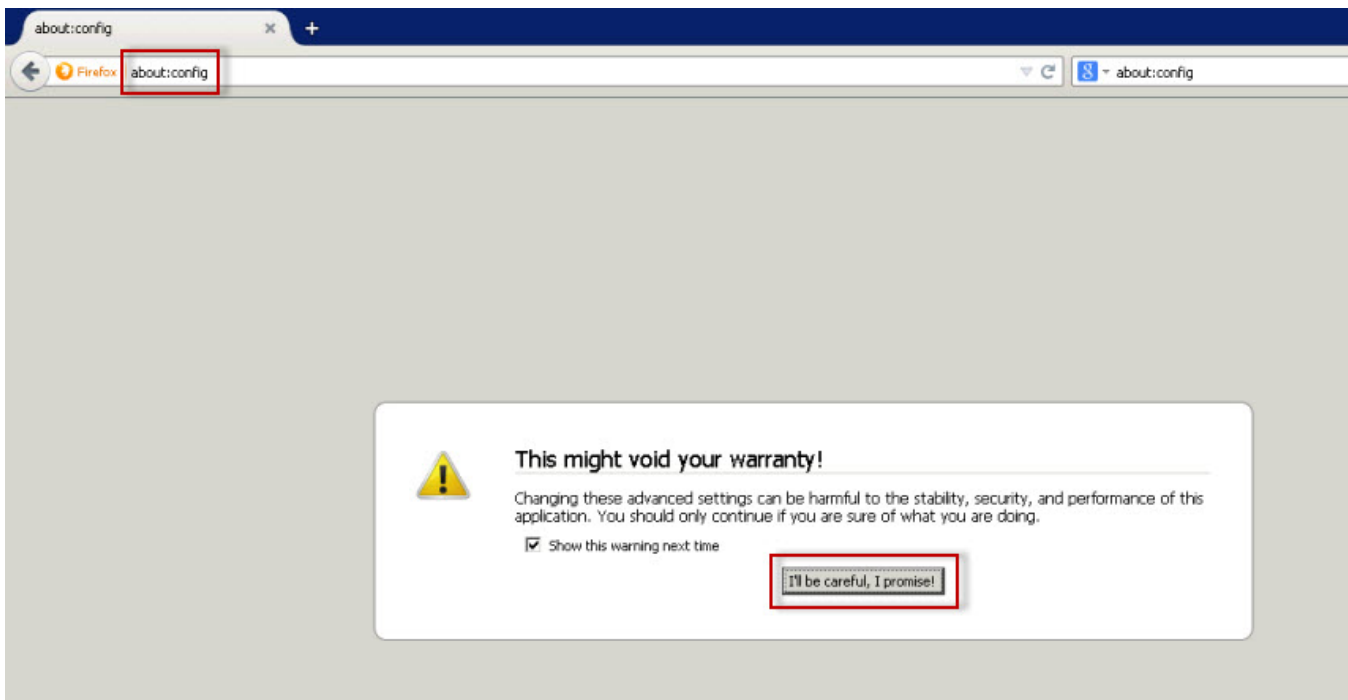
## Configuring Google Chrome and Mozilla Firefox

To configure **Google Chrome**, you can go to the following link: <http://dev.chromium.org/developers/design-documents/http-authentication>.

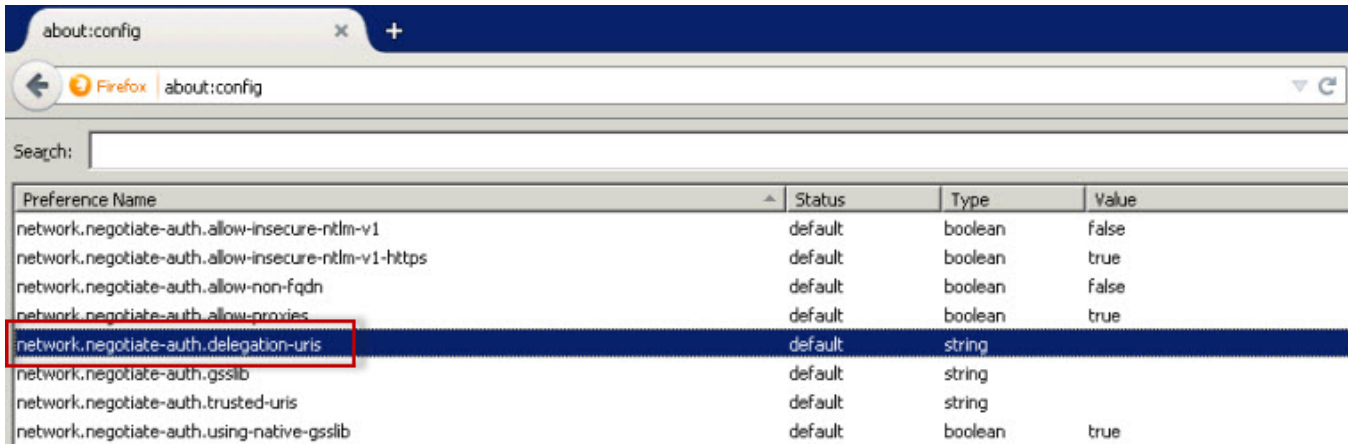
To configure **Mozilla Firefox**, view the following steps:

1. Open your Mozilla Firefox browser and type **about:config** .
2. Click **I'll be careful, I promise!**.





3. Search and double click **network.negotiate-auth.delegation-uris**.



4. Type **https://localhost:9291**. Click **OK**.

5. Search **network.automatic-ntlm-auth.trusted-uris**, double-click it and type the same value as before: **https://localhost:9291**. Click **OK**.

6. Close all instances of the Firefox browser to make the changes effective. Launch the browser again and access the application.

IDERA Dashboard provides an integrated user experience for the IDERA products in your environment.

[IDERA](#) | [Products](#) | [Purchase](#) | [Support](#) | [Community](#) | [Resources](#) | [About Us](#) | [Legal](#)