

Configure server baseline options

The Baseline Configuration tab of the Monitored SQL Server Properties window allows you to configure your server baseline options. SQL Diagnostic Manager calculates a baseline out of a pool of collected data based on the selected period and collection interval, and is represented by mean, standard deviation, minimum, maximum, and count statistics.

Some benefits of using this feature include:

- **Effective alert thresholds** - SQL Diagnostic Manager uses the baseline to provide alert recommendations which you can use to set effective [alert thresholds](#).
- **Effective baseline periods** - Use the [Baseline Visualizer](#) to clearly visualize when to establish baseline periods.
- **Alerting and recommendations** - [Enable alerting based on baseline violations](#).
- **Multiple baselines** - Define and schedule [multiple baselines](#) per server.
- **Quick propagation of baselines** - [Apply baselines to more than one instance](#).
- **Baseline display in metric graphs** - [View relevant baseline in effect](#) in various metric graphs of the Resources tab.



User accounts with the View privilege can access the Baseline Configuration window, but cannot make any changes. User accounts with the Modify privilege can make changes to the baseline configuration of their monitored SQL Server instances.

Access the Baseline Configuration tab

You can access the Baseline Configuration tab of the Monitor SQL Server Properties window by right-clicking the appropriate monitored SQL Server instance, and then selecting **Baseline Configuration**.

Monitored SQL Server Properties - AUT-2005-001\SQL2005 [?] [X]

General

Baseline Configuration

Query Monitor

Activity Monitor

Replication

Table Statistics

Custom Counters

Maintenance Mode

OS Metrics


Disk Drives

Cluster Settings


Wait Monitoring

Virtualization

Analysis Configuration

 Configure a performance baseline for your monitored SQL Server.

What date range should be used to calculate the performance baseline for this server?

 You should select a date range that represents the typical operation of your monitored SQL Server. This baseline will be used to offer recommendations to help you better configure your alerts in the future.

☒ Dynamic (calculates a dynamic baseline based on the last 7 days of collected data)

☐ Custom

From: 10/12/2016 To: 11/11/2016 **Manage Baseline**

Which days and time period within those days should be used to calculate the baseline?

Baseline Name: Default

☐ Sun ☒ Mon ☒ Tue ☒ Wed ☒ Thu ☒ Fri ☐ Sat

From: 08:00 AM To: 05:00 PM

Would you like to apply this baseline configuration to other SQL Servers?

Apply Baseline Configuration

OK **Cancel**

Select a baseline period

The baseline period you specify should represent a typical operation of the monitored SQL Server instances to which this baseline applies.

Dynamic

Calculates a dynamic baseline based on a moving window of the past seven days of collected data.

Custom

Allows you to set a specific time range that does not change.

Select days and time periods

SQL Diagnostic Manager allows you to select the date range used to calculate the performance baseline for one or more selected SQL Server instances. The day and time period fields allow you to select the days and times on which to base your alert baseline calculations. These settings apply to both the Automatic and Custom baseline selections.



When your SQL Server instances are not busy, clear the days and times to remove them from the calculation and provide a more realistic and accurate baseline.

Add multiple baselines

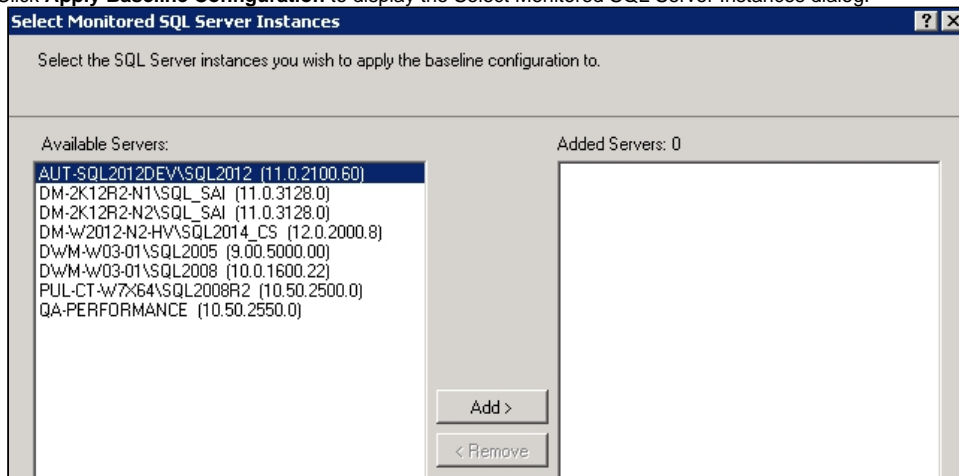
SQL Diagnostic Manager allows you to add and schedule multiple baseline periods in addition to the default one. Open the Add baseline window by clicking the **Manage Baseline** button. For more information, see [Schedule multiple baselines](#).

Apply the baseline to more than one instance

You can apply the baseline configuration from a specific server to additional instances not included when you originally created the baseline configuration.

To add a baseline configuration to additional instances:

1. Click **Apply Baseline Configuration** to display the Select Monitored SQL Server Instances dialog.



2. Select the appropriate instances from the **Available Servers** list, and then click **Add >** to move them to the **Added Servers** list.
3. Click **OK** to confirm your selection and allow SQL Diagnostic Manager to apply this configuration to other instances.



When verifying your baseline configuration changes for more than one instance in the [Change Log view](#), note that instance property changes are logged only once. In comparison, baseline configuration changes are logged as many times as the number of instances affected by the change.

Metrics used in baseline calculations

SQL Diagnostic Manager uses the following metrics when calculating a baseline for a monitored SQL Server instance:

- Available Memory
- [Batches Per Second](#)
- [Blocked Sessions](#)
- [Buffer Cache Hit Ratio](#)
- Buffer Cache Size
- Checkpoint Writes Per Second
- [Client Computers](#)
- Data File Count
- Data File Space Allocated
- Data File Space Used
- Data File Space Used (Percent)
- Database Count
- [Disk Queue Length](#)
- [Disk Time \(Percent\)](#)
- Distribution Latency
- Host CPU Usage
- Host CPU Usage MHz
- Host Disk Device Latency
- Host Disk Kernel Latency
- Host Disk Queue Latency

- Host Disk Read
- Host Disk Total Latency
- Host Disk Usage
- Host Disk Write
- Host Memory Swap In Rate
- Host Memory Swap Out Rate
- Host Memory Active
- Host Memory Ballooned
- Host Memory Consumed
- Host Memory Granted
- Host Memory Usage
- Host Net Received
- Host Net Transmitted
- Host Net Usage
- Full Scans Per Second
- Lazy Writer Writes Per Second
- Lock Waits Per Second
- Log File Count
- Log File Space Allocated
- Log File Space Used
- Log File Space Used (Percent)
- [Log Flushes Per Second](#)
- Logins Per Second
- Oldest Open Transaction (Minutes)
- Open Transactions
- OS CPU Privileged Activity
- OS CPU User Time
- OS Memory Used (Percent)
- OS Total Processor Activity
- Packet Errors Per Second
- [Packets Received Per Second](#)
- [Packets Sent Per Second](#)
- Page Life Expectancy
- Page Lookups Per Second
- [Page Reads Per Second](#)
- Page Splits Per Second
- [Page Writes Per Second](#)
- Pages Per Second
- Physical Memory
- Procedure Cache Hit Ratio
- Procedure Cache Size
- [Processor Queue Length](#)
- Read Ahead Pages Per Second
- Replication Latency (Seconds)
- Replication Subscribed
- [Response Time](#)
- SQL Compilations Per Second
- SQL CPU Activity
- SQL Memory Allocated
- [SQL Memory Used](#)
- [SQL Recompilations Per Second](#)
- System Processes
- System Processes Consuming CPU
- Table Lock Escalations
- Tempdb GAM Wait Time Milliseconds
- Tempdb PFS Wait Time Milliseconds
- Tempdb SGAM Wait Time Milliseconds
- Tempdb Size
- Tempdb Size Percent
- Undistributed Transactions
- Unsubscribed Transactions
- Used Memory (Percent)
- User Connections (Percent)
- User Processes
- User Processes Consuming CPU
- Version Store Generation
- Version Store Size
- VM CPU Ready
- VM CPU Swap Wait
- VM CPU Usage
- VM CPU Usage MHz
- VM Disk Read
- VM Disk Usage
- VM Disk Write
- VM Memory Active
- VM Memory Ballooned
- VM Memory Consumed
- VM memory Granted
- VM Memory Swap In Wait

- VM Memory Swap Out Rate
- VM Memory Swapped
- VM Memory Usage
- VM Net Received
- VM Net Transmitted
- VM Net Usage
- Workfiles Created Per Second
- Worktables Created Per Second

SQL **Diagnostic Manager** identifies and resolves SQL Server performance problems before they happen. [Learn more](#) > >

IDERA Website	Products	Purchase	Support	Community	About Us	Resources	Legal
-------------------------------	--------------------------	--------------------------	-------------------------	---------------------------	--------------------------	---------------------------	-----------------------