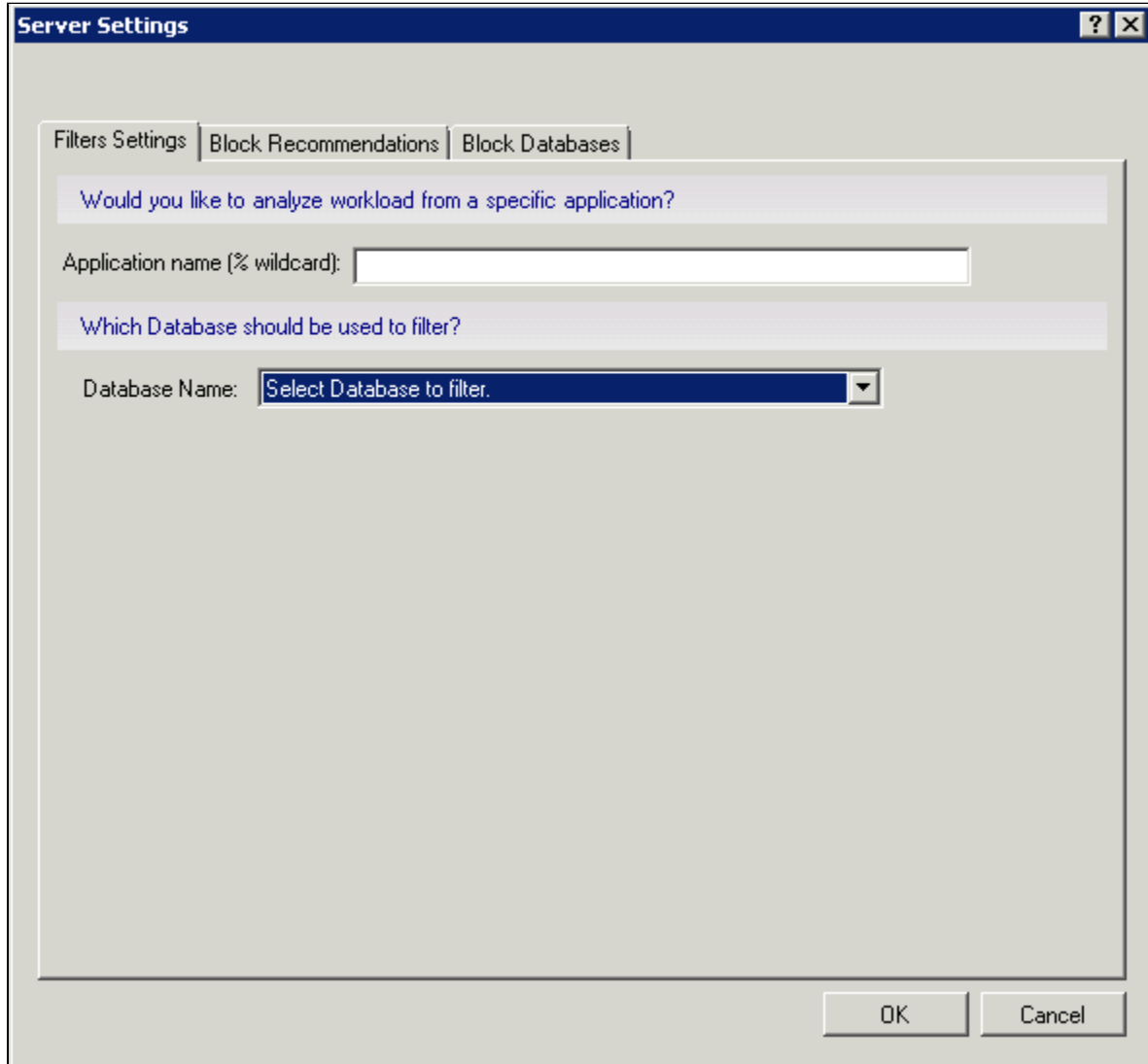


Fine-tune your analysis

SQL Diagnostic Manager provides several options to fine-tune your prescriptive analysis results. You can apply filters that allow you to focus on a specific application or database. You can also reduce analysis "noise" by blocking recommendations and databases for changes that you do not plan to make in your environment.

Apply filters



The screenshot shows the 'Server Settings' dialog box with the 'Filters Settings' tab selected. The dialog has a title bar with a question mark and a close button. Inside, there are three tabs: 'Filters Settings', 'Block Recommendations', and 'Block Databases'. The 'Filters Settings' tab contains two sections. The first section asks 'Would you like to analyze workload from a specific application?' and has a text input field for 'Application name (% wildcard):'. The second section asks 'Which Database should be used to filter?' and has a dropdown menu for 'Database Name:' with the text 'Select Database to filter.' inside it. At the bottom right, there are 'OK' and 'Cancel' buttons.

To apply filters in your analysis results:

1. Right-click the appropriate SQL Server instance from the **Servers** tree and select **Properties**.
2. Select **Analysis Configuration** when SQL Diagnostic Manager displays the Monitored SQL Server Properties window.
3. Click **Advanced Settings** to access the Server Settings window.
4. Select the Filter Settings tab.
5. Enter the filter information in the provided fields, using (%) as a wildcard.
6. Click **OK**.

Block your recommendations

AUT-2005-001\SQL2005 Launch SWA

Overview Sessions Queries Resources Databases Services Logs Analyze

Finding Text	Priority
The integrity of database [ML_TEST] has not been checked in 359.36 days	Medium
The integrity of database [msdb] has not been checked in 4049.44 days	Medium
The integrity of database [model] has not been checked in 42686.52 days	Medium
The integrity of database [master] has not been checked in 42686.52 days	Medium
SQL Server is experiencing relatively high levels of page splits and its memory is not under stress	Low
SQL Server password policy is vulnerable for login sa	Low
The SQL Server user right "Lock Pages in Memory" is not being used	Low
BUILTIN\Administrators is included in sysadmin Role	Low
Authentication set to Mixed Mode	Low
The collation of database SQLdmMobileRepository, SQL_Latin1_General_CI_AS_KS_WS is not under stress	Low
Disallow results from triggers is OFF	Low
Database [ML_TEST] is set to [FULL] recovery mode, and the transaction log has not been backed up	Low
Database [ML_TEST] has outdated backups	Low
Database [model] is set to [FULL] recovery mode, and the transaction log has not been backed up	Low
Database [SQLdmMobileRepository] has outdated backups	Low
Database [model] has outdated backups	Low
Database [master] has outdated backups	Low
Database [msdb] has outdated backups	Low
Database [master] is using Simple Recovery Model	Low
Database [SQLdmMobileRepository] is using Simple Recovery Model	Low
Database [msdb] is using Simple Recovery Model	Low

Block Objects

Please select the objects that should be blocked:

Recommendation Type

☐ Database integrity should be checked

Database

☐ master

Block Selected Cancel

The integrity of database [master] has not been checked in 42686.52 days

The physical integrity of a database [master] should be checked regularly to allow for early detection of errors so that downtime and data loss can be minimized.

Recommendation:
It is recommended that you run DBCC CHECKDB against database [master] to ensure there are no data integrity problems.

Database: **master**

Learn more about: [DBCC CHECKDB](#)

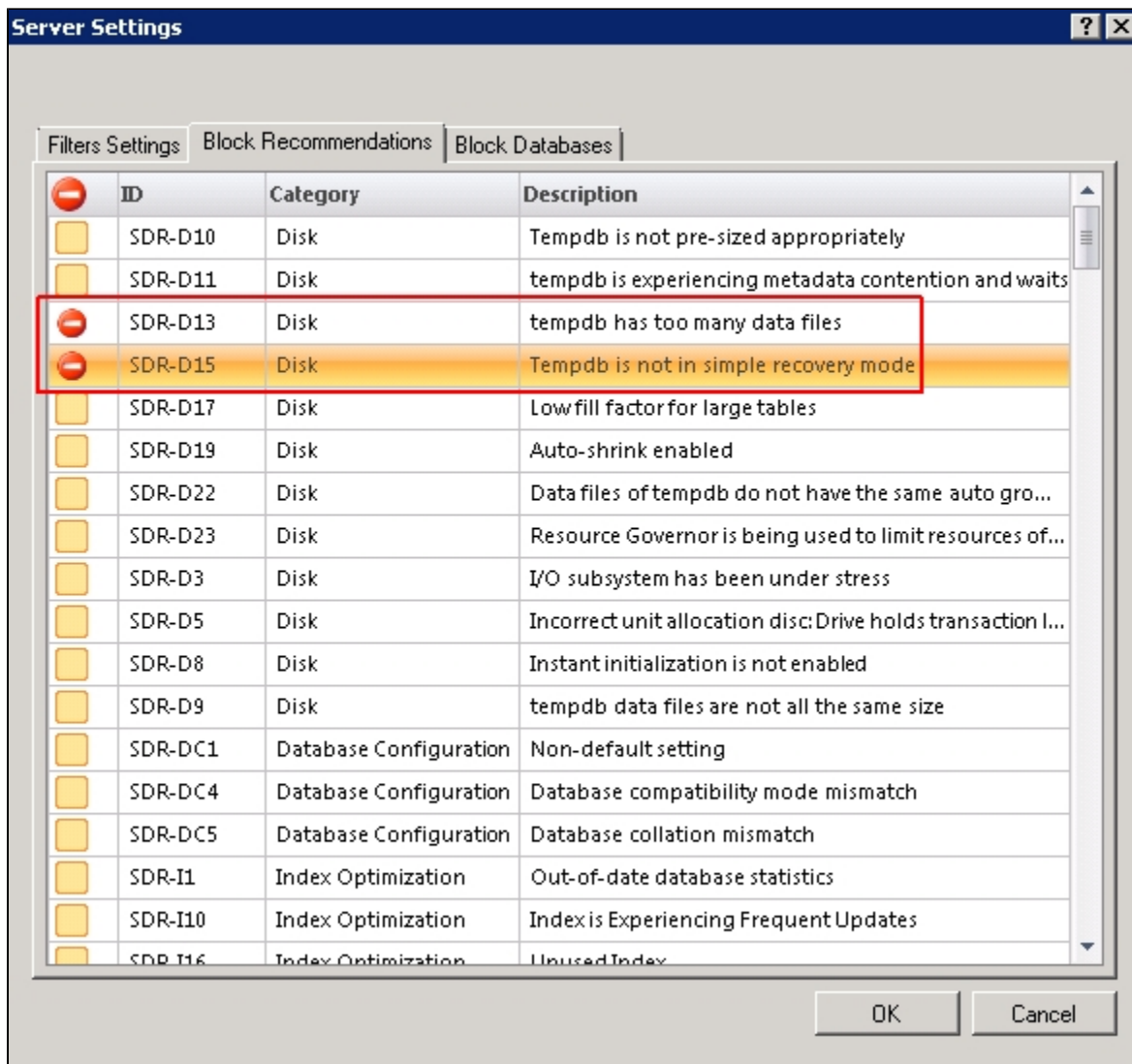
SDR-R3 Database integrity should be checked

To block recommendations from appearing in your analysis:

1. Select one or more recommendations returned from the analysis.
2. Click **Block** in the **Actions** group of the Analyze tab and the Block Objects screen displays.
3. Select the recommendation check box or boxes under Recommendation type.
4. Click **Block Selected**.

To block recommendations from the Server Settings window:

1. Right-click the appropriate SQL Server instance from the **Servers** tree and select **Properties**.
2. Select **Analysis Configuration** when SQL Diagnostic Manager displays the Monitored SQL Server Properties window.
3. Click **Advanced Settings** to access the Server Settings window.
4. Select the Block Recommendations tab.
5. Select the **Block** check-box next to each of the recommendations you want to block from future analyses.
6. Click **OK**.



Blocking a recommendation removes it from all future analyses results for this registered instance.

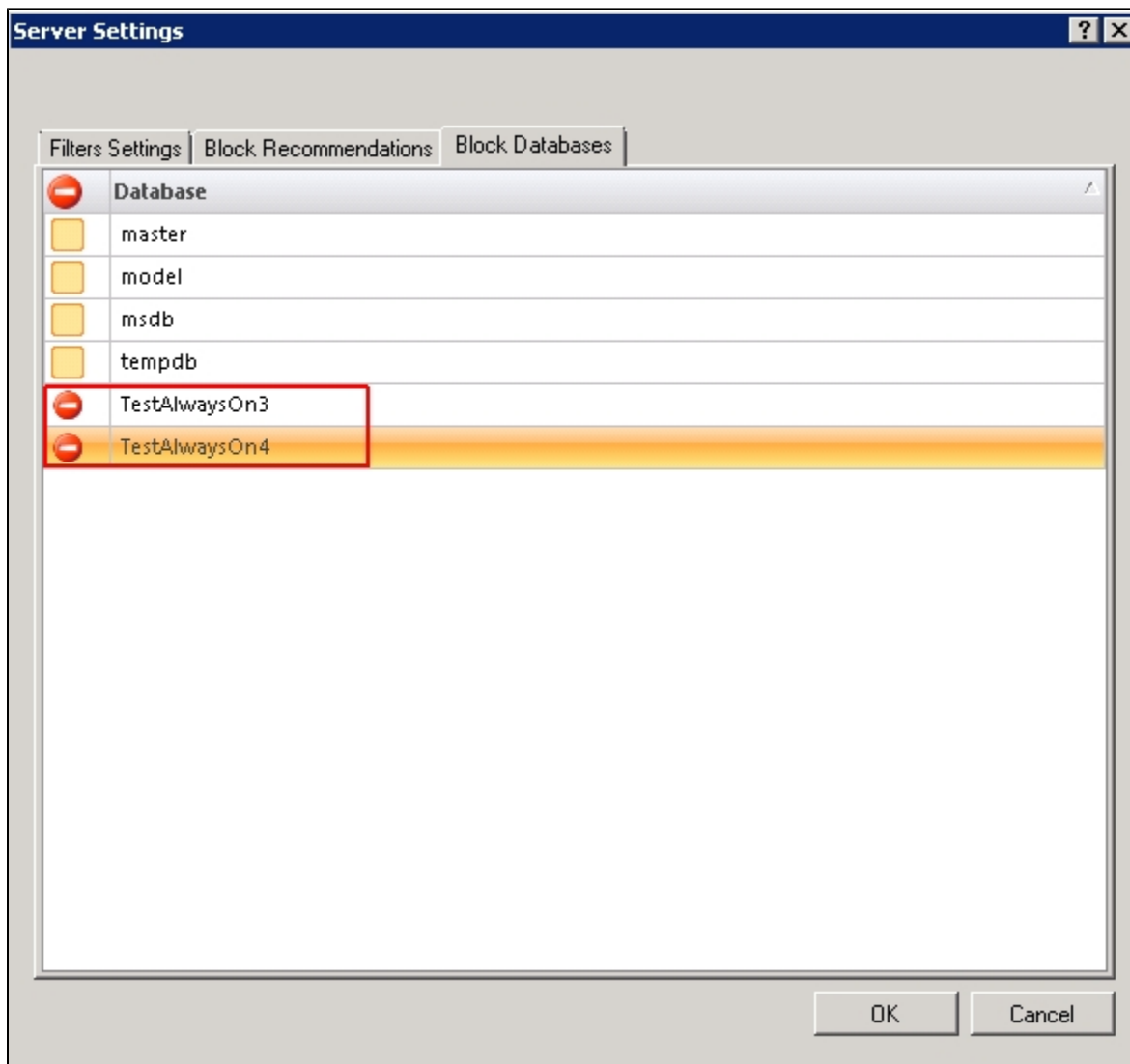
Block databases

To block databases from appearing in your analysis:

1. Access the Block Objects screen by selecting one or more recommendations and clicking **Actions > Block** in the Analyze tab.
2. Select the database check box or boxes under Database.
3. Click **Block Selected**.

To block databases from the Server Settings window:

1. Right-click the appropriate SQL Server instance from the **Servers** tree and select **Properties**.
2. Select **Analysis Configuration** when SQL Diagnostic Manager displays the Monitored SQL Server Properties window.
3. Click **Advanced Settings** to access the Server Settings window.
4. Select the Block Databases tab.
5. Select the **Block** check box next to each of the databases you want to block from future analyses.
6. Click **OK**.



Blocking a database removes it from all future analyses results for this registered instance.

Unblock your recommendations or databases

To unblock recommendations or databases to include them in your analysis:

1. Right-click the appropriate SQL Server instance from the **Servers** tree and select **Properties**.
2. Select **Analysis Configuration** when SQL Diagnostic Manager displays the Monitored SQL Server Properties window.
3. Click **Advanced Settings** to access the Server Settings window.
4. Select the Block Recommendations tab or the Block databases tab of the Server Settings window.
5. Scroll down the list of blocked recommendations or databases and find the recommendation or database you want to unblock.
6. Clear the **Block** box next to the appropriate recommendation or the **Block** box next to the appropriate database.
7. Click **OK**.

SQL Diagnostic Manager identifies and resolves SQL Server performance problems before they happen. [Learn more >>](#)

[IDERA Website](#)

[Products](#)

[Purchase](#)

[Support](#)

[Community](#)

[About Us](#)

[Resources](#)

[Legal](#)