


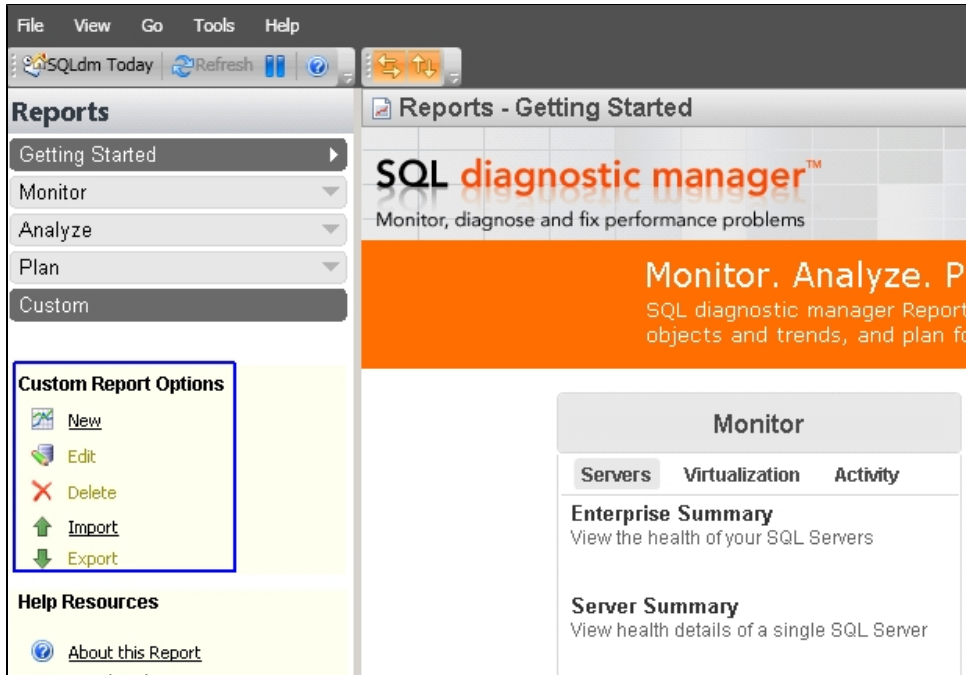
Import a custom report


The Custom Reports Import Wizard allows you to import already defined custom reports from the [IDERA Community Site](#). Custom reports can include any metric collected by SQL Diagnostic Manager.

 The Custom Reports Import and Export functionality applies only to reports created within SQL Diagnostic Manager. Also you can export or import these reports only within SQL Diagnostic Manager environments.

To import a custom report:

1. Open the Custom Reports Import Wizard by clicking the **Import** button in the Custom Report Options tree.

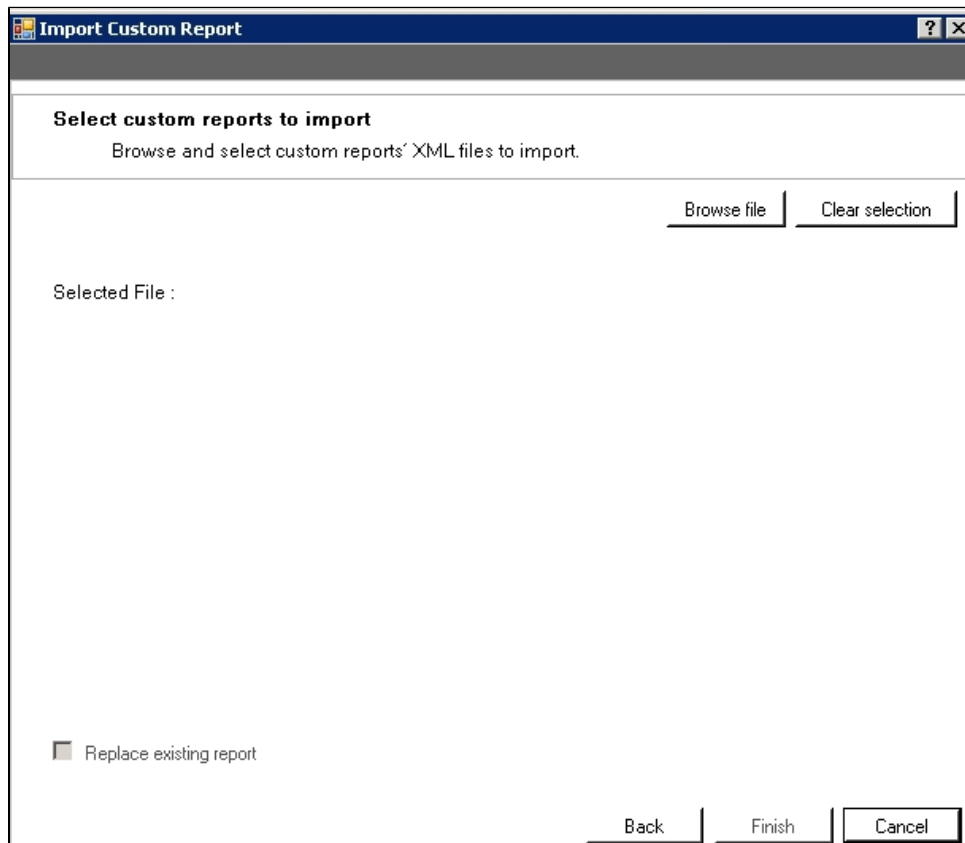


 You can also access to the Custom Report import wizard by clicking **Administration > Import/Export** from the navigation pane and selecting **Custom Report** in the import column.

2. On the **Welcome to the Custom Reports Import** page, click **Next**.



3. On the **Select custom reports to import** page, browse for custom reports' XML files to import.



4. If the report name is already in use but you wish to complete the import process, click **Replace existing report**.
5. If the imported custom report is valid. Click **Finish** to complete the import process and exit the Custom Reports Import Wizard.



Export a custom report

For instructions on exporting a custom report, see [Export a custom report](#).

SQL **Diagnostic Manager** identifies and resolves SQL Server performance problems before they happen. [Learn more](#) > >

[IDERA Website](#)[Products](#)[Purchase](#)[Support](#)[Community](#)[About Us](#)[Resources](#)[Legal](#)