


Query Details view

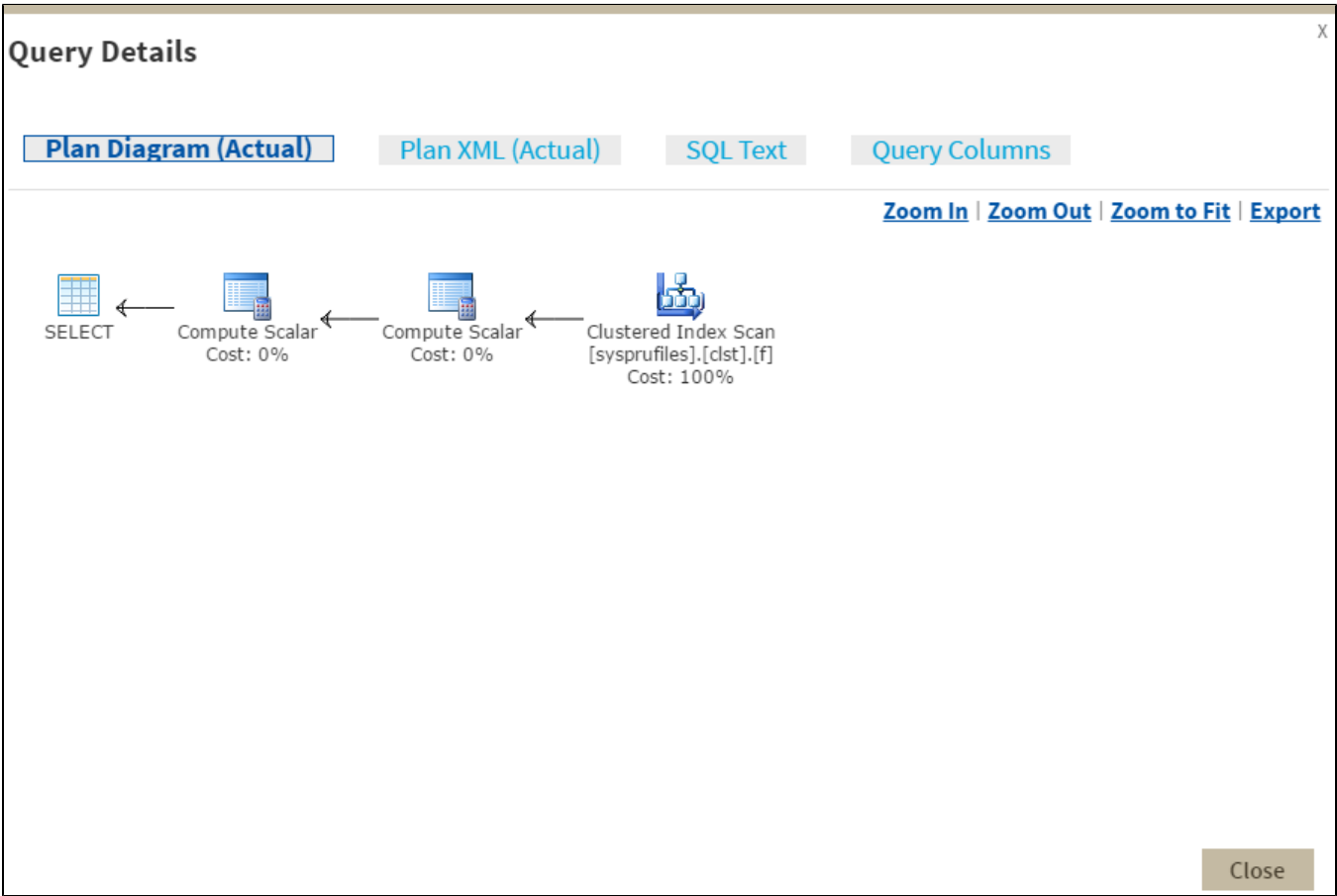
The Query Details view provides various views with detailed information on each query. The Query Details view is comprised of the following tabs:

- [Plan Diagram](#)
- [Plan XML](#)
- [SQL Text](#)
- [Query Columns](#)

 The Plan Diagram and Plan XML views are only available for instances running SQL Server 2008+.

Plan Diagram


The Plan Diagram is a visual representation of the query execution plan (actual or estimated) available in XML format in SQL Server. The Plan Diagram displays a view of the tree of operations that make up a query. This tree shows individual operation nodes, pertaining graphical execution plan icon, along with basic information such as operator name and operation percentage of total cost. Click image to view full size.



In the Plan Diagram view you can perform the following actions:

- Select individual operators and view the [set of properties for each operator](#).
- Increase the size of the image (**Zoom in**).
- Reduce the image size (**Zoom out**).
- Select a size for the view so that fits the current view size (**Zoom to fit**).
- Export image of Plan Diagram.

 The top three operators based on the percentage of total cost in a Plan Diagram are highlighted in yellow.

 **Estimated Query Plans**
SQL Diagnostic Manager displays information on whether the plan displayed is an estimated query plan or an actual one.

Plan XML

The Plan XML tab of the Query Details window displays the actual XML of the query execution plan. It has a syntax-highlighting (color-coded) XML viewer. Click image to view full size.



The screenshot shows the 'Query Details' window with the 'Plan XML (Actual)' tab selected. The XML content is displayed with syntax highlighting. The XML structure includes a root element 'ShowPlanXML' with attributes 'Build', 'Version', and 'xmlns'. Inside, there is a 'BatchSequence' element containing a 'Batch' element, which in turn contains 'Statements'. The first statement is 'StmtUseDb' and the second is 'StmtSimple'. The 'StmtSimple' element contains various attributes like 'QueryHash', 'QueryPlanHash', 'StatementCompId', 'StatementEstRows', 'StatementId', 'StatementOptmEarlyAbortReason', 'StatementOptmLevel', 'StatementSubTreeCost', 'StatementText', 'StatementSetOptions', 'QueryPlan', 'CompileMemory', 'CompileTime', 'RelOp', 'AvgRowSize', 'EstimateCPU', 'EstimateIO', 'EstimateRebinds', 'EstimateRows', and 'EstimatePages'.

```
1 <?xml version="1.0" encoding="UTF-16"?>
2 <ShowPlanXML Build="10.0.4000.0" Version="1.1" xmlns="http://schemas.microsoft.com/sqlserver/2004/07/showplan">
3   <BatchSequence>
4     <Batch>
5       <Statements>
6         <StmtUseDb Database="[Compatibility_level_80]"
7           StatementCompId="60" StatementId="1"
8           StatementText=" use [Compatibility_level_80]" StatementType="USE DATABASE"/>
9         <StmtSimple QueryHash="0xDA1E2882AB7AF339"
10           QueryPlanHash="0xDB8E0226AC0060CC"
11           StatementCompId="61" StatementEstRows="2"
12           StatementId="2"
13           StatementOptmEarlyAbortReason="GoodEnoughPlanFound"
14           StatementOptmLevel="FULL"
15           StatementSubTreeCost="0.00328636"
16           StatementText=" select [database]=DB_ID(), [file_id], [type], [page_count]=[size],
17 [pages_used]=fileproperty([name], 'SpaceUsed') from sys.database_files" StatementType="SELECT">
18           <StatementSetOptions ANSI_NULLS="true"
19             ANSI_PADDING="true" ANSI_WARNINGS="true"
20             ARITHABORT="false"
21             CONCAT_NULL_YIELDS_NULL="true"
22             NUMERIC_ROUNDABORT="false" QUOTED_IDENTIFIER="true"/>
23           <QueryPlan CachedPlanSize="24" CompileCPU="62"
24             CompileMemory="464" CompileTime="550">
25             <RelOp AvgRowSize="22" EstimateCPU="2e-007"
26               EstimateIO="0" EstimateRebinds="0"
27               EstimateRows="0" EstimatePages="0">
```

In the Plan XML view you can perform the following actions:

- Export and save XML file for review in other application such as SSMS or email query execution plan to other DBAs.



Save the file with **.sqlplan** extension to view the graphical query plan in SSMS.

SQL Text

The SQL Text tab of the Query Details window shows the underlying SQL Text for the query execution plan.

Query Details

X

Plan Diagram (Actual)

Plan XML (Actual)

SQL Text

Query Columns

Export

```
1  -- SQLInventoryManager -- Copyright © 2013-2014-2016, Idera, Inc., All
2      Rights Reserved. set transaction isolation level read
3      uncommitted; set lock_timeout 20000; set implicit_transactions
4      off; if @@trancount > 0 commit transaction; set language
5      us_english; set cursor_close_on_commit off; set
6      query_governor_cost_limit 0; set numeric_roundabort off; set
7      deadlock_priority low; set nocount on; use master;
8
9  if object_id('tempdb..#db_files') is not null drop table #db_files;
10
11  create table #db_files( [db_id] int, [file_id] int, [type] tinyint,
12      [page_count] bigint, [pages_used] bigint ) declare @cmd
13      nvarchar(4000) declare @db_name nvarchar(256) declare db_cursor
14      cursor static read_only for select name from sys.databases
15      where HAS_DBACCESS(name)=1 order by database_id open db_cursor
16      fetch next from db_cursor into @db_name while @@FETCH_STATUS =
17      0 begin set @cmd = N' use [' + replace(@db_name,']','[')] + '
18      ' + 'select [database]=DB_ID(), ' + '[file_id], ' + '[type], '
19      + '[page_count]=[size], '
20      + '[pages_used]=fileproperty([name], 'SpaceUsed') ' + 'from
21      sys.database_files' begin try insert into #db_files execute
22      (@cmd) end try begin catch -- try sys.master_files to get size
23      but not space used set @cmd = N'select
24      [db_id]=DB_ID(N''' + @db_name + '''), ' + '[file_id], ' + '[type], '
25      + '[page_count]=[size], ' + '[pages_used] = NULL ' + 'from
26      sys.master_files ' + 'where database_id =
27      DB_ID(N''' + @db_name + ''')' begin try insert into #db_files
```

Close

In the SQL Text view you can perform the following actions:

- Export and save SQL text for review.
- Access the Plan Diagram, Plan XML, and Query Columns tabs.

Query Columns

The Query Columns tab of the Query Details window shows all the referenced columns for the query execution plan.

Query Details

X[Plan Diagram \(Actual\)](#)[Plan XML \(Actual\)](#)[SQL Text](#)[Query Columns](#)[Export](#)

Database	Schema	Table	Column
[Compatibility_level_80]	[sys]	[sysprufiles]	fileid
[Compatibility_level_80]	[sys]	[sysprufiles]	filetype
N/A	N/A	N/A	Derived Column
N/A	N/A	N/A	Derived Column
N/A	N/A	N/A	Derived Column
N/A	N/A	N/A	Derived Column
N/A	N/A	N/A	Derived Column
N/A	N/A	N/A	Derived Column
N/A	N/A	N/A	Derived Column
[Compatibility_level_80]	[sys]	[sysprufiles]	size
N/A	N/A	N/A	Derived Column

[Close](#)

In the Query Columns view you can perform the following actions:

- Export and save information to a text file.

SQL [Diagnostic Manager](#) identifies and resolves SQL Server performance problems before they happen. [Learn more > >](#)

[IDERA Website](#)[Products](#)[Purchase](#)[Support](#)[Community](#)[About Us](#)[Resources](#)[Legal](#)