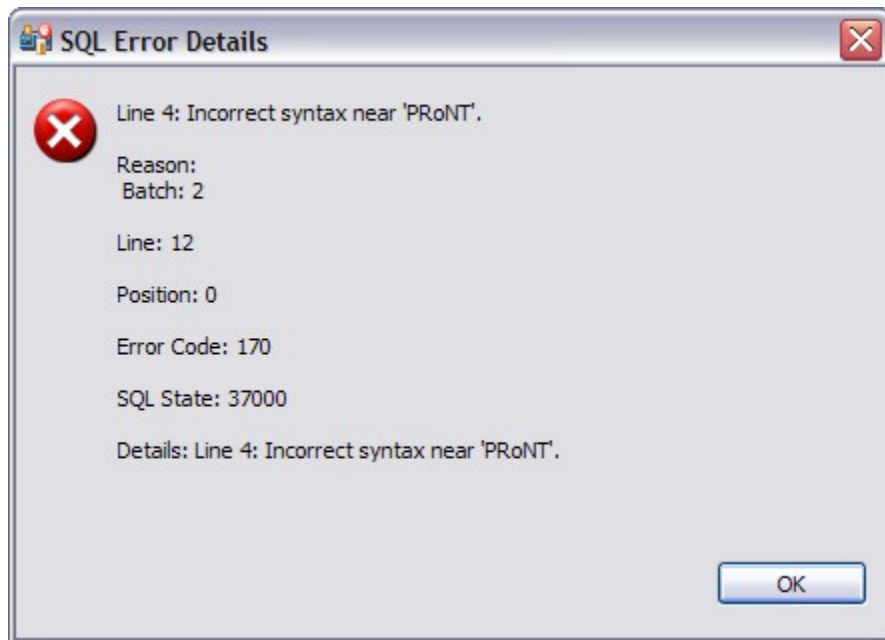


View log details

The SQL Error Log and Problems views contain functionality that enable you to view details regarding individual log entries, and in some cases, locate or fix those issues automatically.

To view details about SQL Errors entries

Right-click the error whose details you want to view, and then select **SQL Error Details**.



The SQL Error Details dialog provides information about the specified SQL error. Additionally, you can double-click the error to view the problem code in SQL Editor.

To view details about Problems

Right-click the entry whose details you want to view, and then select **Properties**. The **Properties** dialog appears, summarizing the issue.