


# Installing SQL Inventory Manager

This section guides you through the installation of IDERA SQL Inventory Manager. You can install IDERA SQL Inventory Manager on any computer that meets or exceeds the [product requirements](#).

Before you install IDERA SQL Inventory Manager, be sure to have:

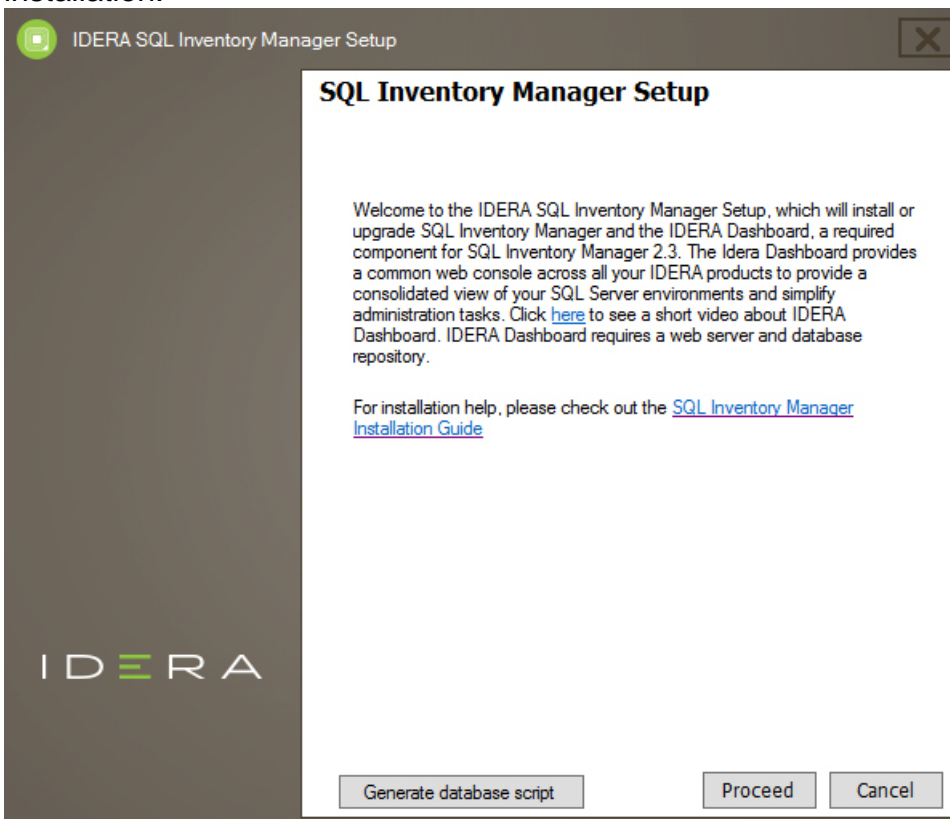
- A local administrator account on the machine you are installing the product.
- A host machine for SQL Inventory Manager services.
- A host SQL Server for the product databases.
- A service account with permissions to read/write and create databases and update their schemas.

 You can also grant IDERA SQL Inventory Manager Product Administrator permissions in the IDERA Dashboard. For more information, see [Managing users in the IDERA Dashboard](#).

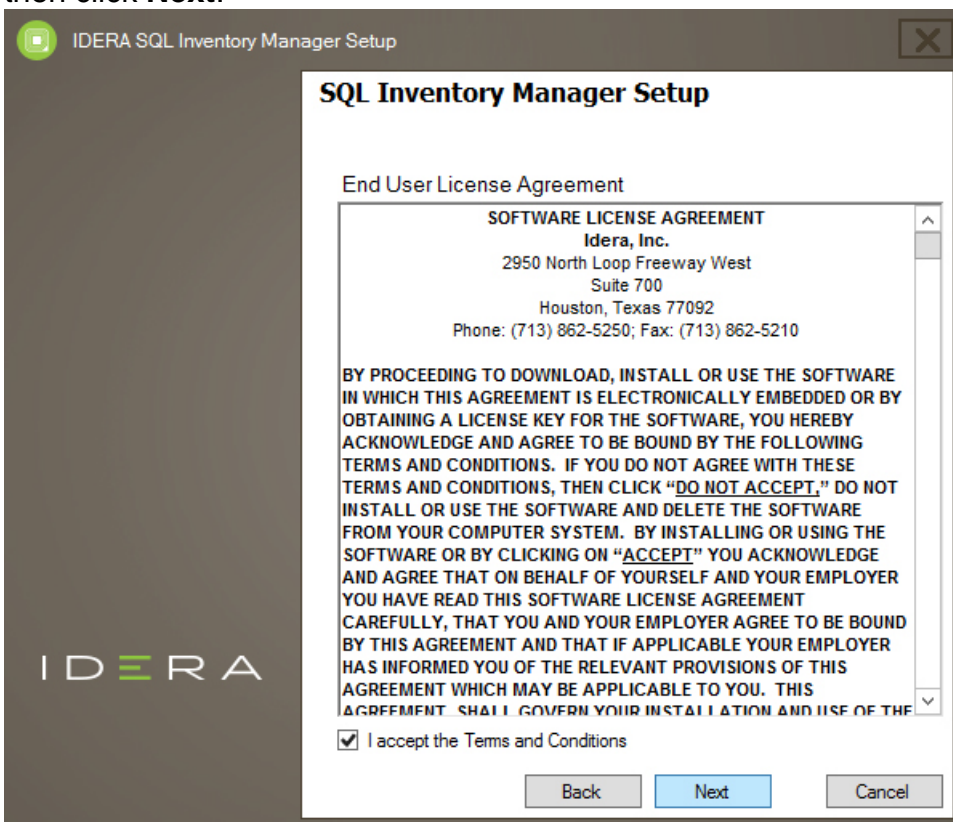
## Installing IDERA SQL Inventory Manager

Before you install IDERA SQL Inventory Manager, be sure to meet the requirements mentioned before. Open the installer and follow these steps:

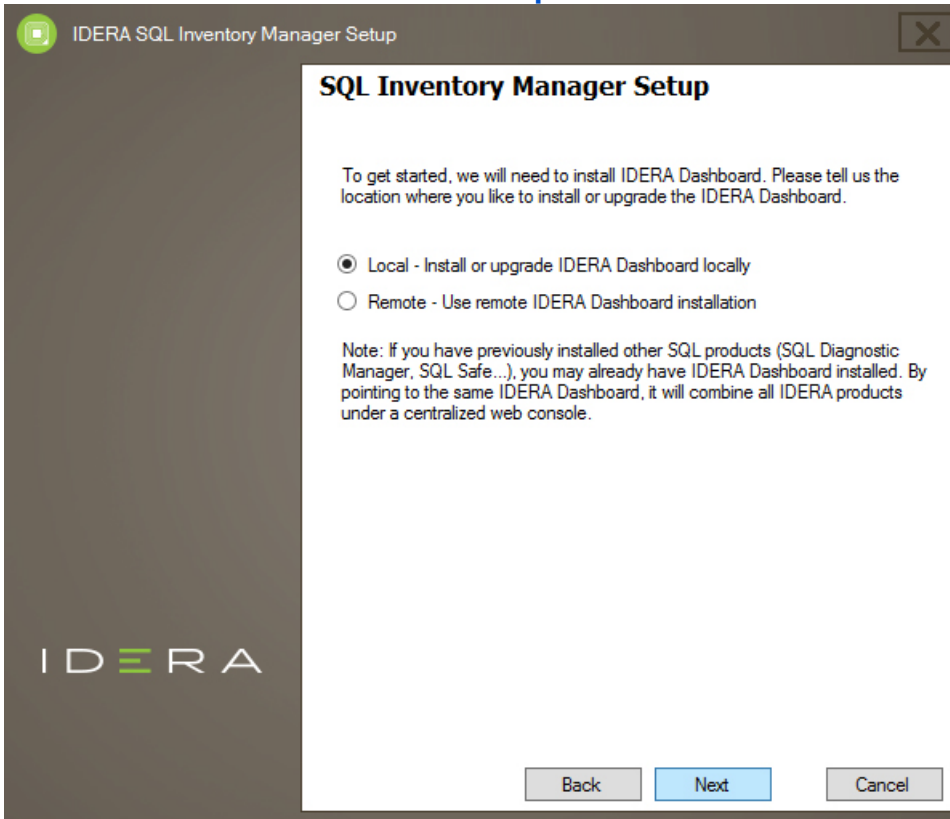
1. On the **IDERA SQL Inventory Manager Setup** window, click **Proceed** to continue with the installation.



2. Read the License Agreement. If you agree, click **I accept the Terms and Conditions** and then click **Next**.



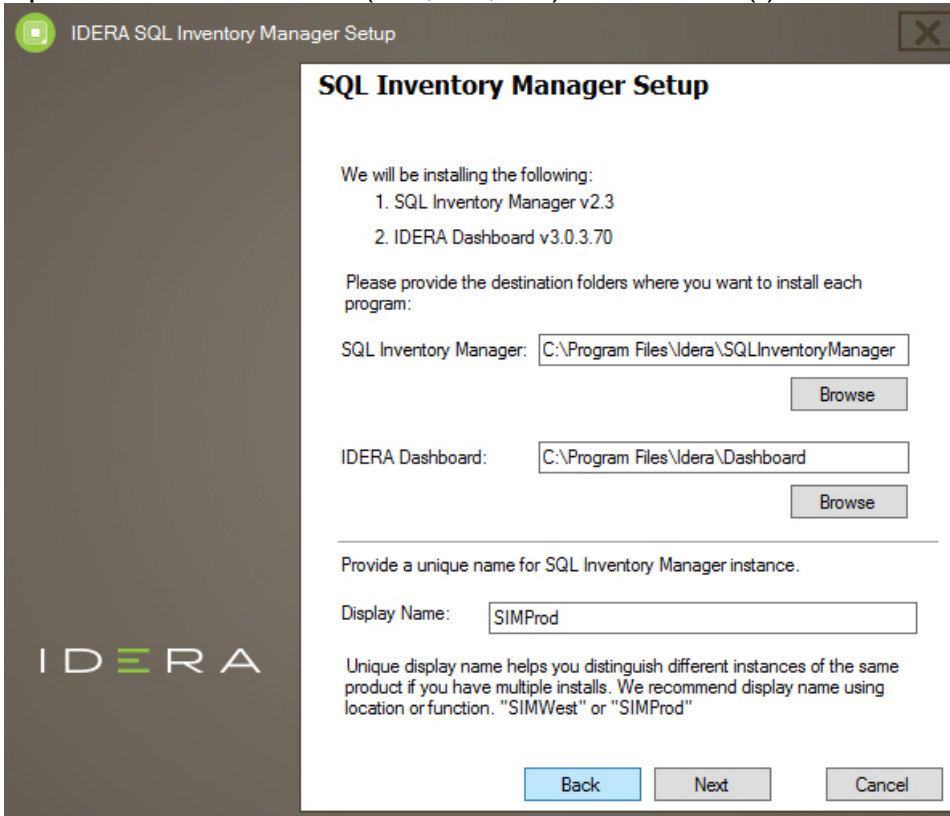
3. If you want to install IDERA Dashboard locally, choose **local** and click **Next**. If you want to register SQL Inventory Manager with an existing remote IDERA Dashboard installation, choose **Remote** and follow [these steps](#) .



4. If you want to change SQL Inventory Manager and IDERA Dashboard default path, click **Browse**.

On the Display Name box, type a unique name for this instance of IDERA SQL Inventory Manager and click **Next**. A Display Name allows you to identify each instance of IDERA SQL Inventory Manager or other IDERA products when you have more than one installation of the same product. IDERA recommends that you use a name based on a

location or function, such as **SIM-Prod** or **SIM-West**. Note that this field accepts only alphanumeric characters (A-Z, a-z, 0-9) and dashes (-).



5. Specify a **User Name** and a **Password** for the Service Account for IDERA Dashboard. Use the format `<Domain Name>\<User Name>`. IDERA SQL Inventory Manager uses this account to connect, discover, and gather configuration information from SQL Servers. The installer grants the "Log on as a Service" right to the account that you specify. Click **Next** to continue.  
If you want to use different credentials for the Service Account for SQL Inventory Manager,

clear the **Use the same as above** box, and type your credentials. IDERA SQL Inventory Manager uses this account when accessing the IDERA Dashboard to share data.

**IDERA SQL Inventory Manager Setup**

We will need to create Service Accounts for SQL Inventory Manager and IDERA Dashboard. The Service accounts will be used to collect information and will also be the default user to log into the applications. You can log into the IDERA Dashboard to create additional users.

Service Account for Idera Dashboard

Domain\UserName:

Password:

The "Log on as service" right will be granted to this account

---

Service Account for SQL Inventory Manager

☒ Use the same as above

Domain\UserName:

Password:

6. Specify a SQL Server Instance host and database names for the creation of the SQL Inventory Manager Repository database and the IDERA Dashboard Repository database respectively.

By default, the setup program uses your Windows logon account to create and access the Repository databases. If you want to use Microsoft SQL Server connection credentials,

select **Use Microsoft SQL Server Authentication** and click **Change** to enter the SQL Server credentials. Click **Next**.

**SQL Inventory Manager Setup**

Next we need to create the repository for SQL Inventory Manager IDERA Dashboard. Please provide the instance and database names for each repository.

**SQL Inventory Manager Repository**

SQL Server Instance:

Database Name:

Connection Credentials: By default, we will use Windows credentials that you provided to create the Repository.

☐ Use Microsoft SQL Server Authentication Change

**Idera Dashboard Repository**

SQL Server Instance:

Database Name:

Connection Credentials: By default, we will use Windows credentials that you provided to create the Repository.

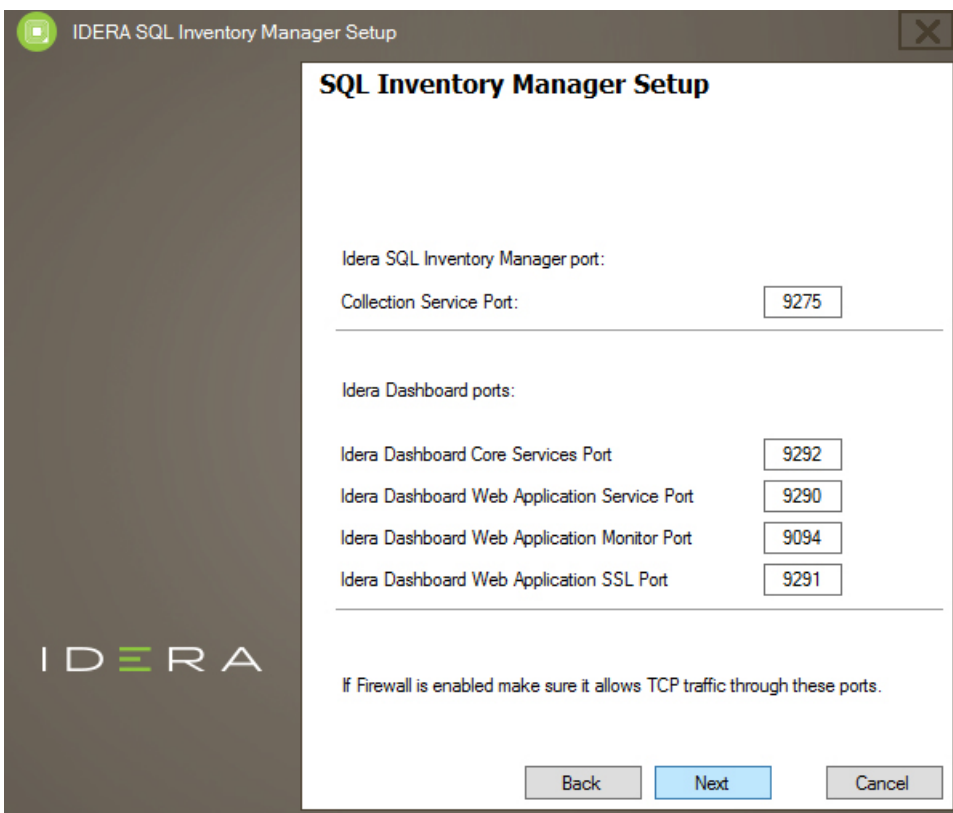
☐ Use Microsoft SQL Server Authentication Change

Back Next Cancel

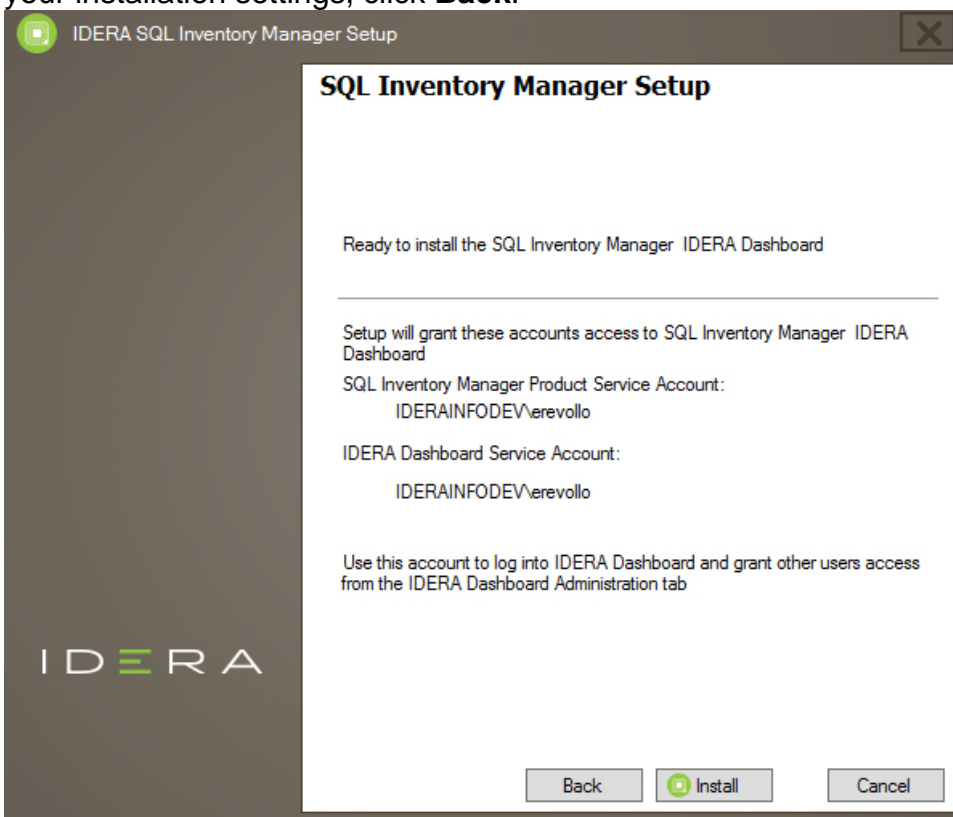
- Determine which ports you want to use for the Inventory Manager Collection Service and for the IDERA Dashboard services. You must verify that the Firewall allows TCP (Transmission Control Protocol) traffic through your specified ports. By default, IDERA SQL Inventory Manager uses ports 9275 and 9291 for the Collection and Web Application services respectively. Click **Next**.

**i** Port values should be between 1 and 65535.

Keep in mind, that browsers may block some specific ports. To check a list of all blocked ports on Mozilla Firefox, see [Mozilla Port Blocking](#).

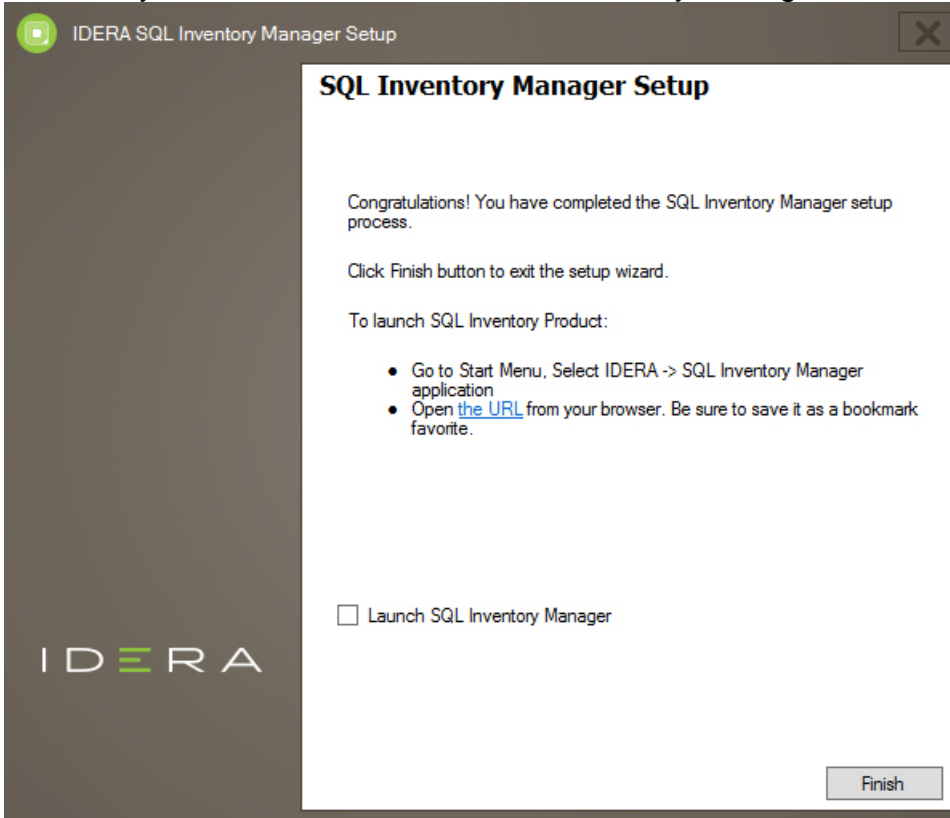


8. Click **Install** if you are ready to start the installation. If you want to review or change any of your installation settings, click **Back**.



9. After the installation is complete, you can select **Launch IDERA SQL Inventory Manager** to launch SQL Inventory Manager immediately after the installation window closes.

Alternatively, you can access IDERA SQL Inventory Manager web application through the following link: **http://<ServerName>:9291** where ServerName is the name of the machine on which you installed the IDERA SQL Inventory Manager services.



When IDERA SQL Inventory Manager launches on your browser, you should use your Windows user account with your respective password to log in to the product. Please take into account that IDERA SQL Inventory Manager does not store passwords.

IDERA [SQL Inventory Manager](#) lets you discover and visualize your SQL Server environment. [Learn more > >](#)

<a href="#">IDERA Website</a>	<a href="#">Products</a>	<a href="#">Purchase</a>	<a href="#">Support</a>	<a href="#">Community</a>	<a href="#">About Us</a>	<a href="#">Resources</a>	<a href="#">Legal</a>
-------------------------------	--------------------------	--------------------------	-------------------------	---------------------------	--------------------------	---------------------------	-----------------------