

IDERA Reports Utility

Your SQL Inventory Manager installation includes the IDERA Reports Utility. You can use this tool to deploy the [included reports](#) on your SSRS Instances. You can also use the IDERA Reports Utility to deploy other custom reports.



Note

IDERA Reports Utility needs to be present on the same server as the SIM services.

Accessing the report deploy utility

To access the IDERA Report Utility go to the **ReportUtility** folder inside the SQL Inventory Manager installation path. The default location for the IDERA Reports Utility is **C:\Program Files\Idera\SQLInventoryManager\ReportUtility**

Note: You may need to run it as Admin in some cases

Deploying reports

To deploy reports on your instances follow these steps:

1. Open IDERA Report Utility.

2. Type the required information.

Report Server Web Service URL: The location of the report server.

Target SQL Server: The server that hosts the SQL Inventory Manager repository database.

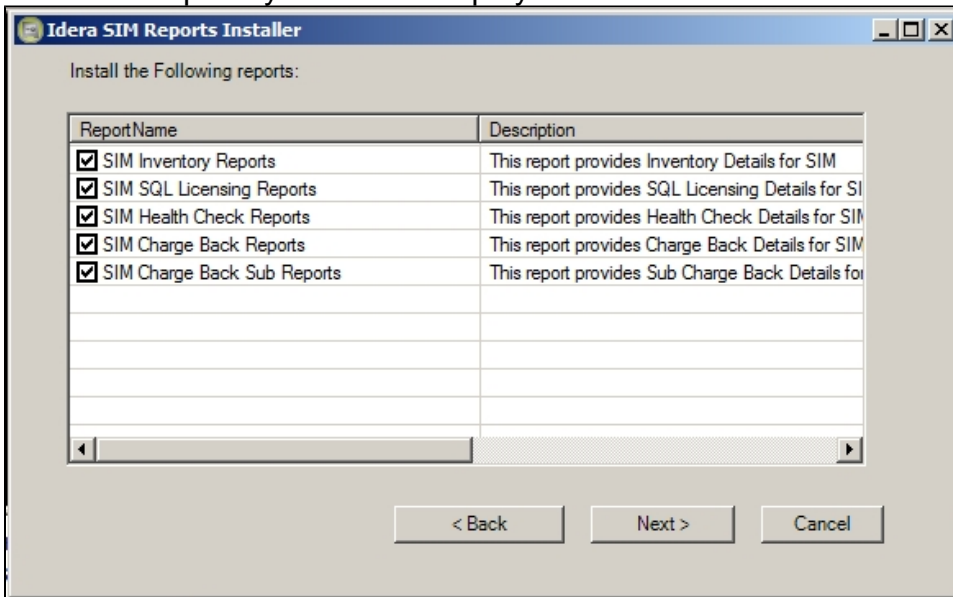
SQL Database: The SQL Inventory Manager repository database, the default name is SQLInventoryManagerRepository.

Login ID: A user ID with access rights to the Inventory Manager repository database.

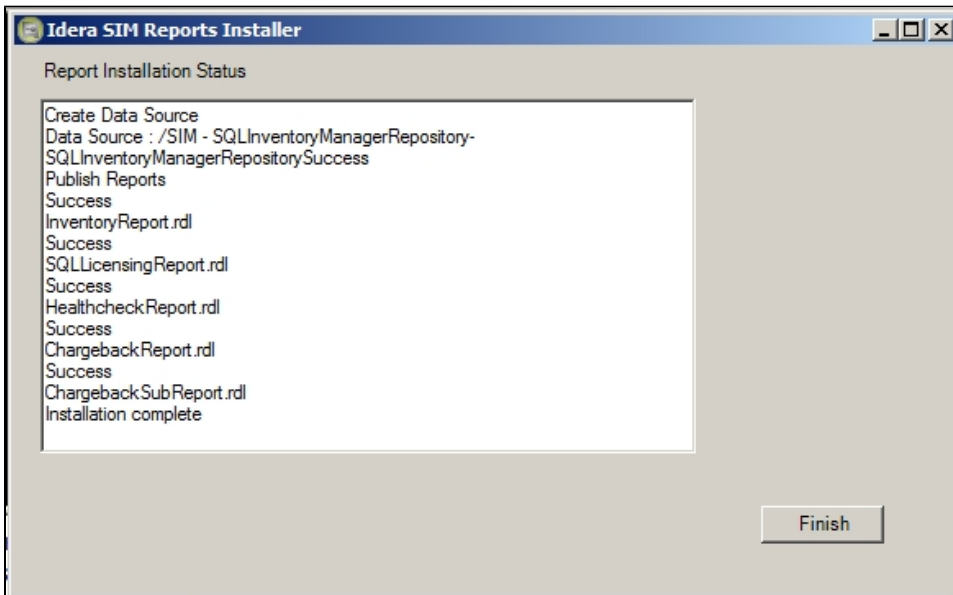
Password: A valid password for the previous user ID.

3. Click **Next**.

4. Select the reports you want to deploy and click **Next**.



5. Click **Finish** to close the window.



Adding custom reports

You can also add custom reports to your installation. To add custom reports go to the Reports Utility folder, the default location is **C:\Program Files\Idera\SQLInventoryManager\ReportUtility**, and follow these steps.

1. Place the reports you want to install inside the **Reports** folder.
2. Open the file **rdl.xml** located in the same folder as the Reports Utility.
3. Add and customize the following code, make sure to add it before the `</folder>` tag.

```
<reportfile>
    <name>The name of a Report</name>
    <file>Reports\filename.rdl</file>
    <description>Enter a description for your report.<
/description>
</reportfile>
```

4. Save the file and close it.
5. Run the IDERA Reports Utility

SQL Inventory Manager lets you discover and visualize your SQL Server environment. [Learn more](#) > >

IDERA Website	Products	Purchase	Support	Community	About Us	Resources	Legal
-------------------------------	--------------------------	--------------------------	-------------------------	---------------------------	--------------------------	---------------------------	-----------------------