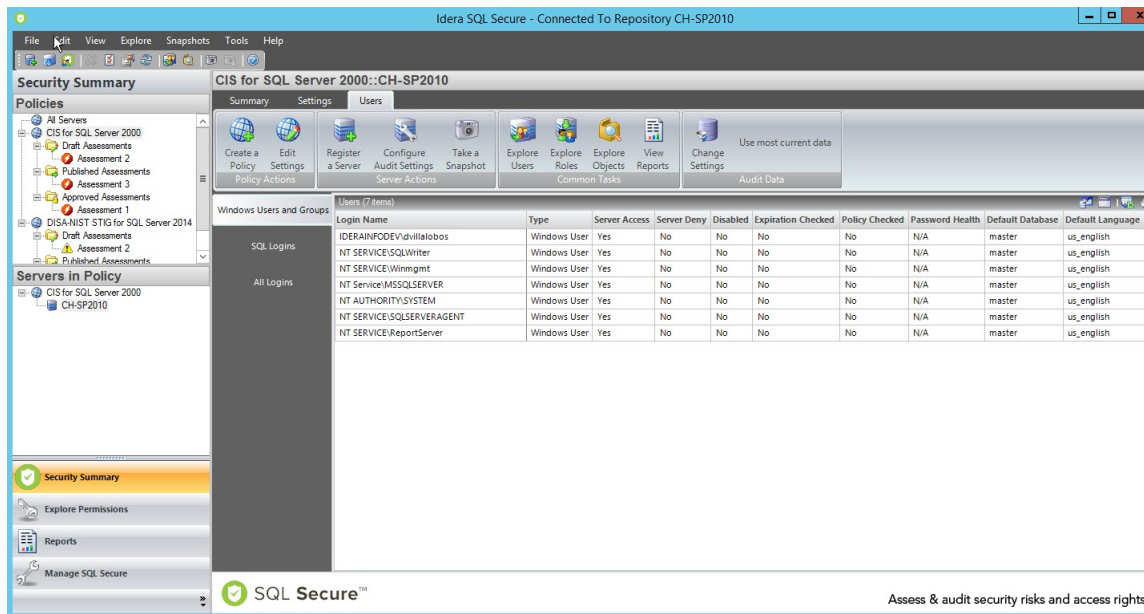


View user security across all servers

The IDERA SQL Secure **Security Summary** view allows you to see the Users for a selected policy. For this purpose click the respective policy in the Policies tree, then go to the **Users** tab.



The **Users** tab allows you to view all the user accounts associated with the SQL Server instances assigned to the selected policy.



You can right-click on a particular user account row and select **Show Permissions** to explore user permissions and see more detailed security information about the selected account.

Information displayed on the Users tab

You can filter user information according to the login type along the left side of the Users list, after you select a login category (Windows Users and Groups, Azure AD Users and Groups, SQL Logins, and All Logins), you can see the following information:

Login Name

The full login name of the associated account

SQL Server

Name of the SQL Server instance the login is associated with

Type

Login permission type (Windows Group or SQL Login)

Server Access

Whether or not the user has access on the SQL Server instance

Server Deny

Whether or not the user is denied access to the SQL Server instance

Disabled

Whether or not the user account is disabled

Expiration Checked

Whether or not the password expiration is checked

Policy Checked

Whether or not the associated policy is checked for this user account

Password Health

Whether or not the password associated with the account is considered weak. You can configure [how SQL Secure detects weak passwords](#). Possible password health states include:

Password health state	What it means
Blank	The password for this login is either blank or null, which means no password is required for authentication or successful connection to databases hosted by your audited SQL Server instances.
Matches login name	The password for this login matches the name of the login.
N/A	The password for this login was not checked, most likely because the login is a Windows user account.
OK	This login most likely has a strong password because the password does not match any of the words and phrases in the Default Weak Passwords list or the additional and custom passwords you specified.
Weak	The password for this login matches one or more of the words and phrases in the Default Weak Passwords list or the additional and custom passwords you specified.

Default Database

The database that this login connects to and queries when no other database is specified

Default Language

The language that is set as the default for the user account



You can choose which columns to display on this list, group by columns, save the information, and print it, by going to the menu grid located on the top right section.

[IDERA Website](#) | [Products](#) | [Buy](#) | [Support](#) | [Community](#) | [About Us](#) | [Resources](#) | [Legal](#)