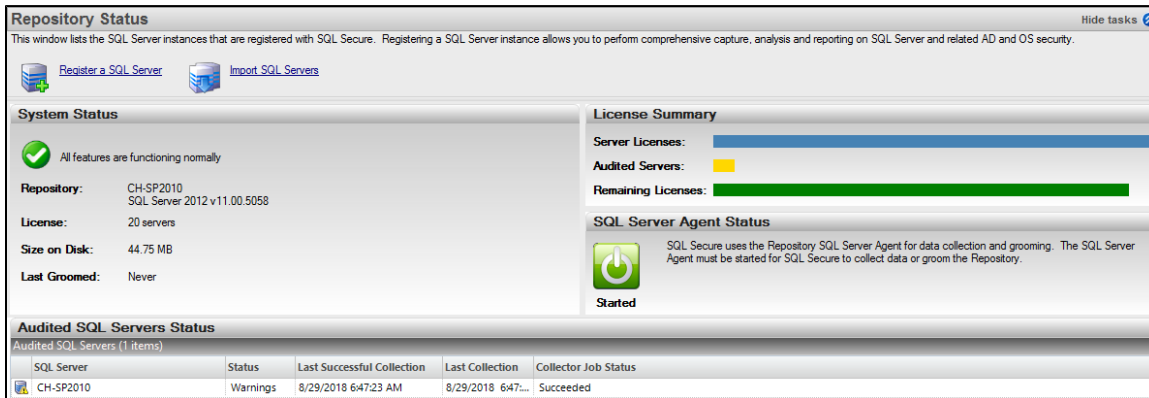


# View the SQL Secure Repository status

The **Repository Status** window allows you to view status of the SQL Server instances that are registered with IDERA SQL Secure, SQL Secure licenses, and the SQL Server Agent used for collecting data.



## System Status

The **System Status** section lists the SQL Server instance where the Repository resides and the version of SQL Server being utilized. In addition, the total number of SQL Secure licenses, the amount of space the Repository is using, and the time of the last Repository grooming is listed. For more information on grooming, see [Grooming Snapshots](#).

## License Summary

The **License Summary** provides a graphical representation of the total number of SQL Server instances that can be monitored using your current SQL Secure licenses, the number of SQL Server instances currently being monitored by SQL Secure, and the number of additional SQL Server instances that can be monitored by SQL Secure. For more information, see [Managing Your SQL Secure Licenses](#).

## SQL Server Agent Status

The **SQL Server Agent Status** section displays the current status of the SQL Server Agent that SQL Secure uses to collect security information.

**If the SQL Server Agent is stopped**, you must start the agent on the SQL Server instance hosting the Repository or snapshots cannot be taken. For more information, see [Microsoft Books Online](#).

## Audited SQL Servers Status

The **Audited SQL Servers** section lists each audited SQL Server registered with SQL Secure. The list contains the status, last successful collection, and last collection attempted for each of the audited SQL Servers. Right-click a SQL Server instance in the list to explore user or object permissions, view the SQL Server instance summary, register a new SQL Server instance, remove the SQL Server instance from SQL Secure, configure the snapshot collection, manually take a snapshot, refresh, or view the properties of the SQL Server instance.

The following information is provided for each SQL Server instance:

Property	Column Description
SQL Server	Displays the name of the SQL Server instance that is being audited
Status	Displays any warnings or errors that may have occurred with the last snapshot
Last Successful Collection	Displays the date and time that the latest snapshot was taken and completed successfully
Last Collection	Displays the date and time that the last snapshot was attempted (whether or not it was completed successfully)
Collector Job Status	Describes the current status of the SQL Server job running the audit data collection