

Comparing data

You can create a data comparison job to compare the data of two registered data sources, specify configuration adjustments and refine mapping parameters. After running the job, DB Change Manager can generate SQL scripts which you can run to synchronize any discrepancies. You can run the scripts to update data sources immediately, or store the scripts for later use.

DB Change Manager displays data comparison job results at row level, and it can automatically update mismatches or add missing rows at the table level.

The following tasks step you through creating and running a data comparison job:

- [Create a Data Comparison Job](#)
- [Describe and Save the Job](#)
- [Specify the Source and Target Data Sources](#)
- [Specify Execution, Mapping, Comparison, and Resolution Options](#)
- [Understand the Data Source Mapping Process](#)
- [Customize Database Mapping](#)
- [Inspect the Databases](#)
- [Customize Table Mapping](#)
- [Reconfigure the Data Source Mapping](#)
- [Set Job Notification Options](#)
- [Run the Data Comparison Job](#)
- [Review Comparison Results](#)

After comparing the data, you can synchronize it to match. For more information about this feature, see [Synchronizing Data Repositories](#).

Create a Data Comparison Job

You create, modify, and run a Data Comparison job in the Data Comparison Job editor. For more details about the editor, see [Data Comparison Job Editor](#).

To create a new data comparison job

Select **File > New > Data Comparison Job** and the Data Comparison Job editor opens.

To open an existing data comparison job

1. Select **File > Open Job**.
2. Select a data comparison job from the list.
3. Click **OK**.
The Data Comparison Job editor opens.

Describe and Save the Job

The Job Name and Description pane contains more than just the Name field. It shows where the job is stored in Project Explorer. When you click the Details button, you can see the project's directory path.

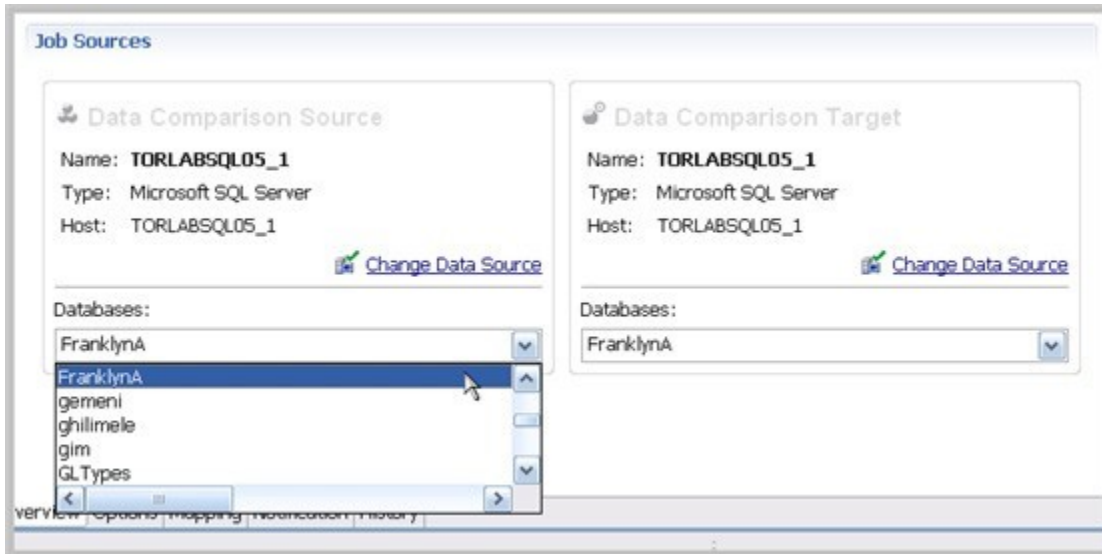
If the job will be used to monitor compliance against company standards or policies, you can add it to the [Compliance Explorer](#) list. This list lets you quickly see all the jobs that have recently passed or failed the compliance criteria you set.

To describe and save a job

1. Type a new name for the job in the **Name** field. Enter a meaningful name that will quickly and uniquely identify the job in other views and dialogs.
2. Add relevant information in the **Notes** field.
3. Click **Track Results in Compliance Explorer** if you want the job to be listed in the [Compliance Explorer](#). Compliance is used most commonly for configuration comparisons.
4. Click **File > Save** or **File > Save All**, or highlight the editor window and press **Ctrl+S**.

Specify the Source and Target Data Sources

The Data Comparison Source and Data Comparison Target boxes identify what data sources are compared when the job runs. When a data source is added to a job, its name, database type, and host are displayed. The Databases drop down menu lets you select from a list of the databases on the source.



To add a data source to a job

1. Click and drag a data source from Data Source Explorer to the **Data Comparison Source** or **Data Comparison Target** box, or click **Select Data Source** in the appropriate box and choose a data source from the dialog.

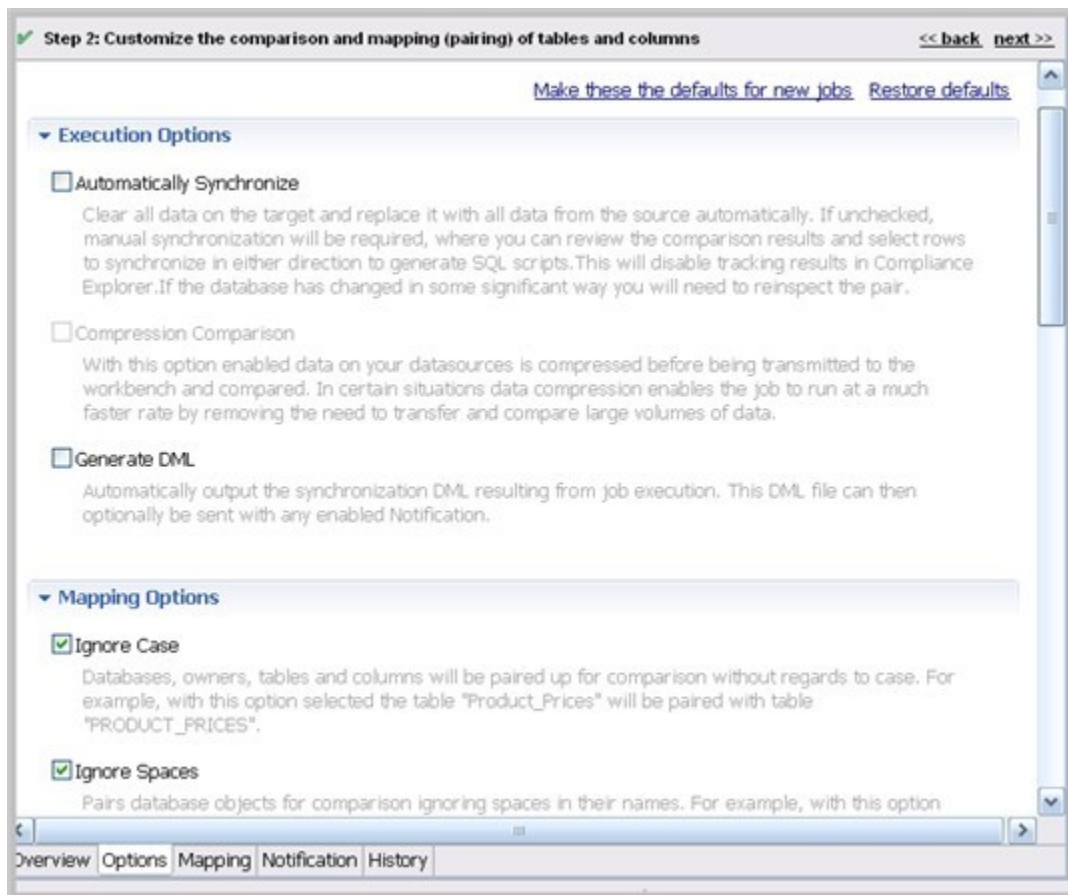


You can change a data source selection by clicking **Change Data Source** from the appropriate box, or by dragging a different data source to the box from Data Source Explorer.

2. Select the databases, or tables and views (depending on the type of database), from the **Databases** pulldown menu.
3. After you name the job and specify the data sources, click **Options**.

Specify Execution, Mapping, Comparison, and Resolution Options

You can set various options that control how a job is processed on the Options tab.



To set data comparison job options

1. Scroll down to see all the options and their descriptions, and select or deselect them as needed.
2. If an option is not available for the data source, the check box is greyed out. The options are described in the [DB Change Manager Preferences](#):
 - [Execution Options](#)
 - [Mapping Options](#)
 - [Comparison Options](#)
 - [Resolution Options](#)
3. When you are satisfied with the options, click **Mapping**.

To save options as defaults for future jobs

1. Set the options.
2. Click **Make these the defaults for new jobs**.

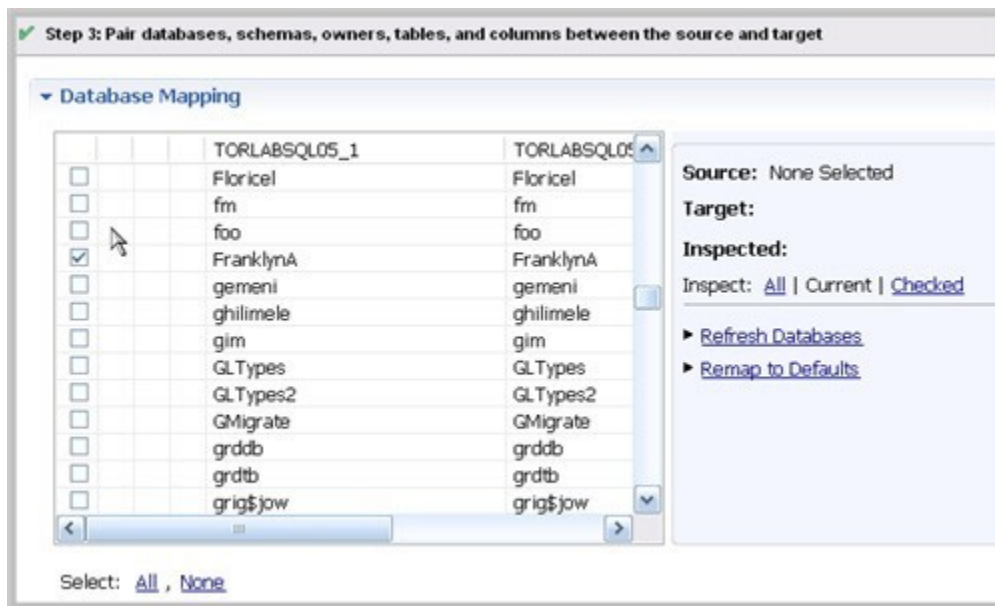
Understand the Data Source Mapping Process

Mapping is the process of pairing data source elements between the source and target of a job. These elements (databases, tables, and rows) are compared when the job runs to determine matches and mismatches between the two sources.

Mapping details are shown on the Mapping tab of the editor.

Customize Database Mapping

When you first click into the Mapping tab, the **Database Mapping** table lists the two data sources and lists all of their databases. If you previously selected a database in the Overview tab, it is selected. You can scroll right to see the **Last Inspected** column, which indicates that the pair has not yet been analyzed, or inspected, by DB Change Manager. The right side of the pane provides similar information.



To select databases to compare

Use the check boxes to select the databases you want to compare. The **Select All or None** option is helpful if there are many databases in the list.

To change the default target database

1. In the database row, select the target.
2. From the dropdown menu, select a new database.

Inspect the Databases

Before you can see the default, initial table mappings, you run an inspection process.


To run the database comparison inspection

On the right side of the Database Mapping pane, click one of the following Inspect options:

- **All** inspects all pairs in the table. This is not recommended if you have a large number of databases.
- **Current** inspects the current object mappings.
- **Checked** inspects only those pairs selected in the table.

 Alternatively, you can select a row and in the Table Mapping pane click **Yes, retrieve the objects in this pair**.

Once inspected, icons in the table that indicate how much of the selected objects matched. Hover over the icon to see more information.

<input type="checkbox"/>		foo	foo
<input checked="" type="checkbox"/>		FranklynA	FranklynA
<input type="checkbox"/>		gemeni	gemeni

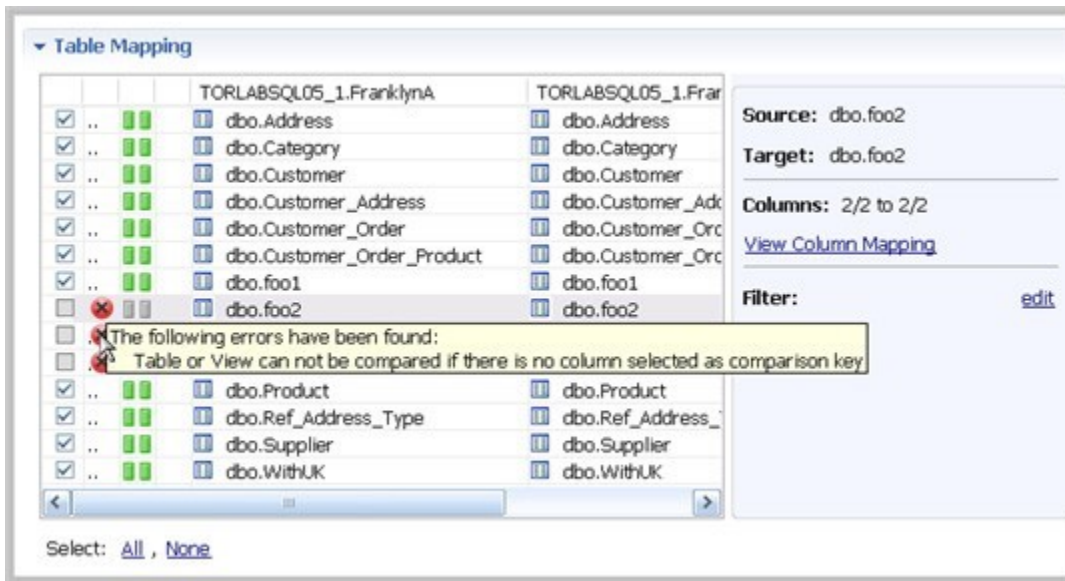
To restore the Database Mapping table to its original settings

In the Database Mappings pane, click **Remap to Defaults**.

All settings revert to the original object mappings saved with the job, based on the options you selected in the Mapping tab.

Customize Table Mapping

The Table Mapping pane lists the paired tables. The icons indicate whether mappings were complete, and if not, error icons indicate what problems were encountered, if any.

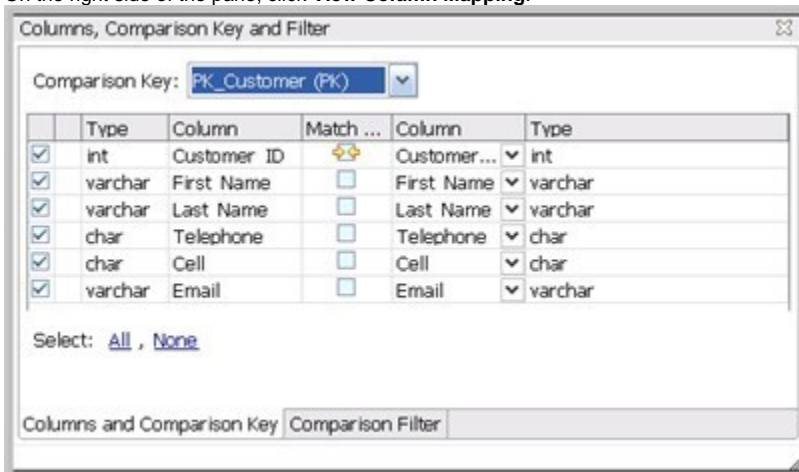


To change the mapping to a new target column


1. In the table row, select the target.
2. From the dropdown menu, select a new target column.

To view or update the column mappings of a pair of tables

1. Select a row by highlighting it with the cursor. (The check box is irrelevant for this task.)
2. On the right side of the pane, click **View Column Mapping**.



3. In the Columns and Comparison Key pane, you can:
 - Select or deselect columns to use in the comparison job. Because this could affect referential integrity, review [Resolution Options](#).
 - Change or add a comparison key if multiple keys are available. In the Comparison Filter pane, you can:
 - Write a WHERE clause to use during the comparison.
 - Create a different WHERE clause per table in the pair. Select **Separate Where Clause** and an additional text box is added for a second WHERE clause.

 When entering selective WHERE clauses, do not include the WHERE keyword; for example, use "AGE>12" instead of "WHERE AGE>12".

Reconfigure the Data Source Mapping

After configuring and running a comparison job, you may discover that you need to set different mapping options. You can reconfigure the way DB Change Manager maps data source elements and then run the job again.

To reconfigure the automatic mapping process

1. In the Options tab, select or deselect **Mapping Options**. The options are also described in [Mapping Options](#).



If you change the mapping options in **Preferences**, they will become the defaults for all new jobs.

2. In the Mapping tab, click **Refresh Databases and Owners** to update the automatic comparison.

Set Job Notification Options

When a job completes, DB Change Manager provides various ways of notifying you. See [Setting Job Notifications](#) for details.

Run the Data Comparison Job

After you have specified the options and mappings for a data comparison job, you can run it.

To run a job

1. Click **File > Save** to save the job before you run it.
2. In the upper right of the Data Comparison Job editor, click the **Run** icon.



While the process runs, the Results tab appears and displays the Comparison Summary pane. This information includes:

- Source and target data source names
- When the job started
- Estimated remaining time for the job to run
- Elapsed time of the job
- Names of objects currently being compared
- A progress bar showing percentage completion

Review Comparison Results

After a job run completes, the Results tab shows the Comparison Results table.

The screenshot shows the 'Comparison Summary' pane with the following details:

- April 27, 2010 6:50 PM
- ✓ All Rows Matched
- Total Rows Compared: 5878
- Elapsed Time: 00:12 (mm:ss)

Below the summary are buttons for 'View Report' and 'Export Results...'. At the bottom is the 'Comparison Results' table:

TORLABSOL...	TORLABSOL...	Progress	Compare Index	Results	Resolution
FranklynA	FranklynA	✓ Done	✓ 100% Mat...	View	

The Comparison Results table lists:

- The source and target databases
- Progress status; either **Done**, **Failed**, or, if no pairs were specified, **Nothing to Compare**
- The **Compare Index** percentage of matches
- The **Results Column View** icon links to details about the comparison job

After running a data comparison job, you may decide to synchronize one to the other. For more information, see [Synchronizing Data Repositories](#).

