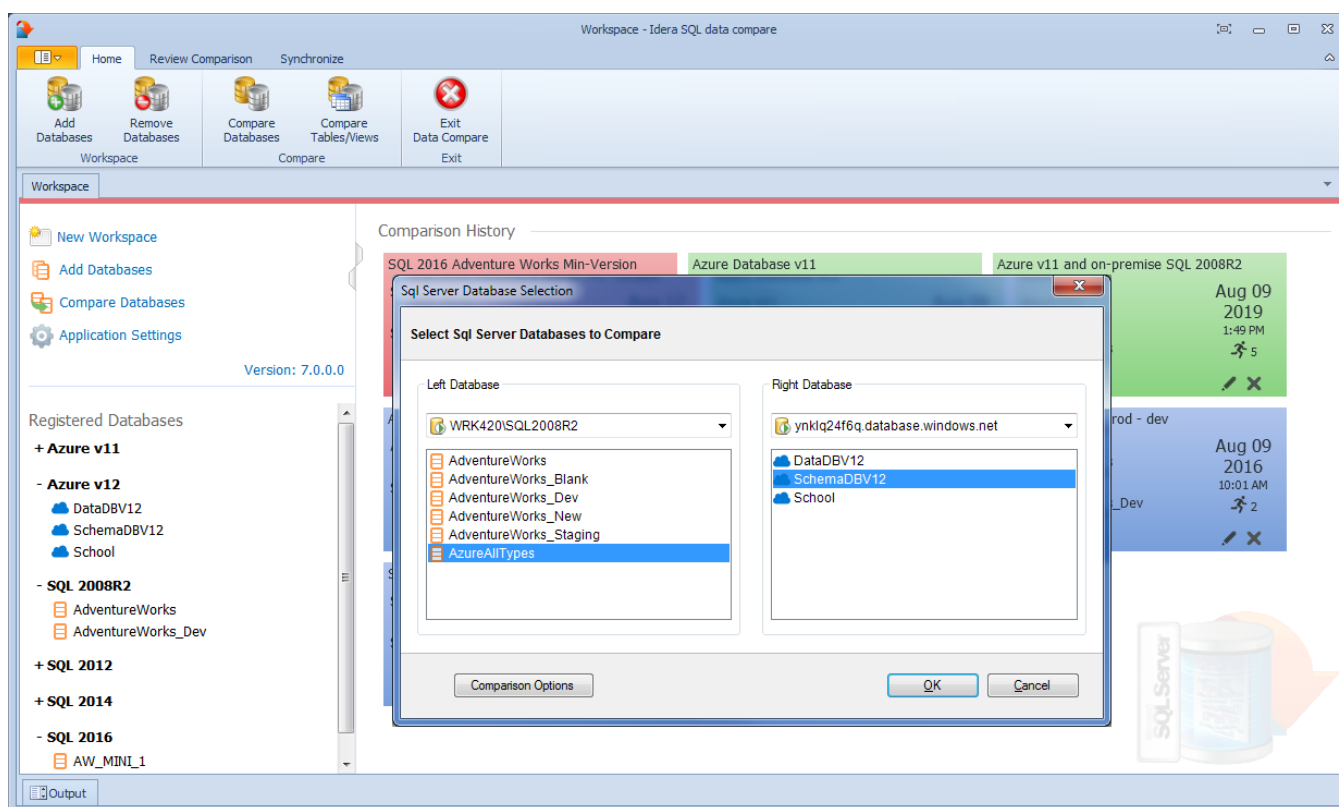


SQL Data Compare Comparing Databases

To start a comparison between two databases click on the IDERA SQL Data Compare **Compare Databases** button on the Home tab of the ribbon. The SQL Server Database Selection dialog window that appears allows you to chose the server(s) where the databases you wish to compare reside as well as the databases themselves.

From this window, you can also access the [Comparison Options](#) that are applied during the comparison.



Total compare from data to schema with IDERA [SQL Comparison Toolset](#). [Learn more >>](#)

IDERA Website	Products	Purchase	Support	Community	About Us	Resources	Legal
-------------------------------	--------------------------	--------------------------	-------------------------	---------------------------	--------------------------	---------------------------	-----------------------