

Upgrade to this release

This version of IDERA SQL Inventory Manager brings you new features that will help you improve the management of your environment. Upgrade to this new release so you can access and make the most of these features.

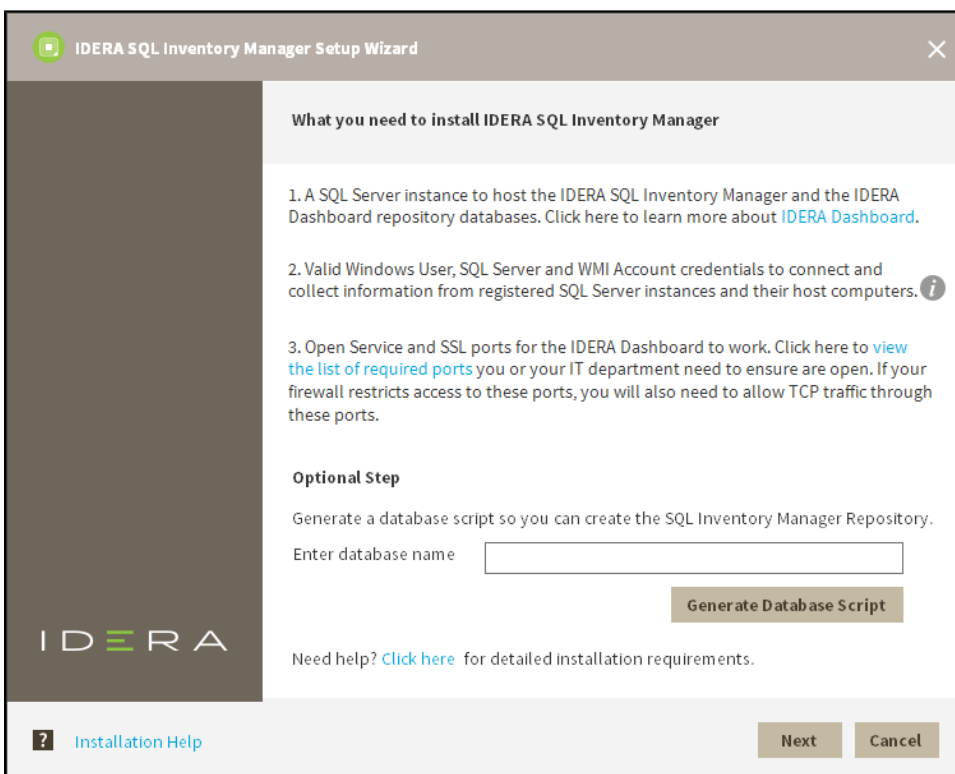
Click [here](#) to access the list of new features for this release.

Before upgrading, take into account the following checklist:

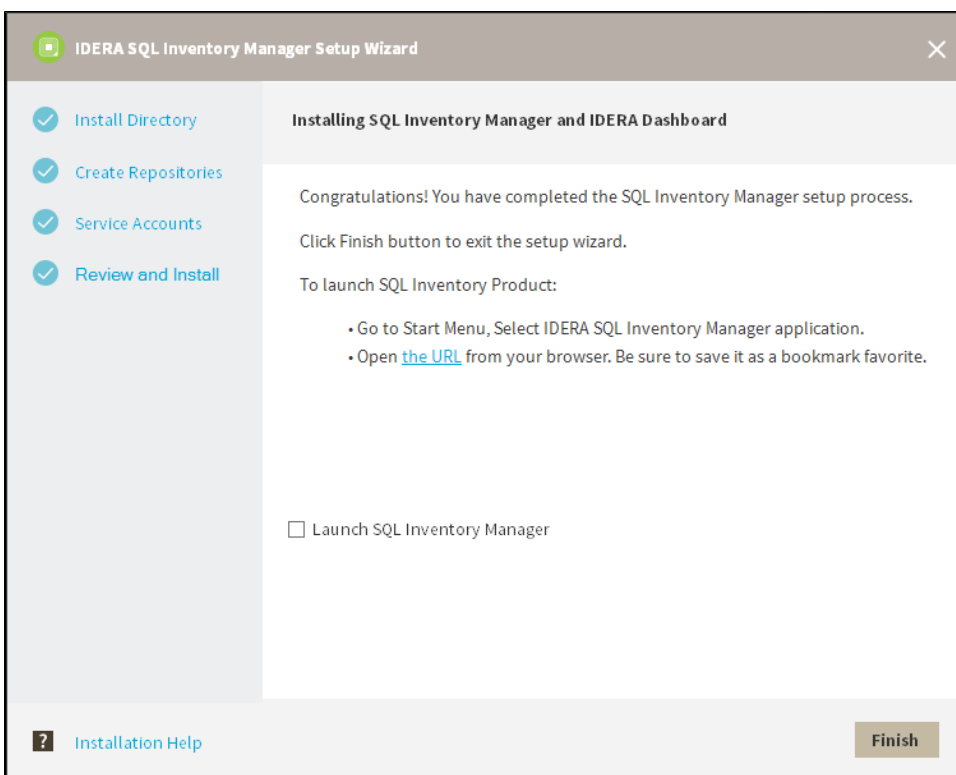
- Back up your IDERA SQL Inventory Manager and Repositories. The upgrade process will convert the repositories from the previous schema to the current schema. Once you finish the upgrade you cannot revert to previous repositories, be sure to take a backup in case you want to revert to a previous version of the schema.
- Make sure that your environment meets the [hardware](#) and [software requirements](#) for installing IDERA SQL Inventory Manager.
- Ensure you have the [required accounts and permissions](#).

To upgrade to this release:

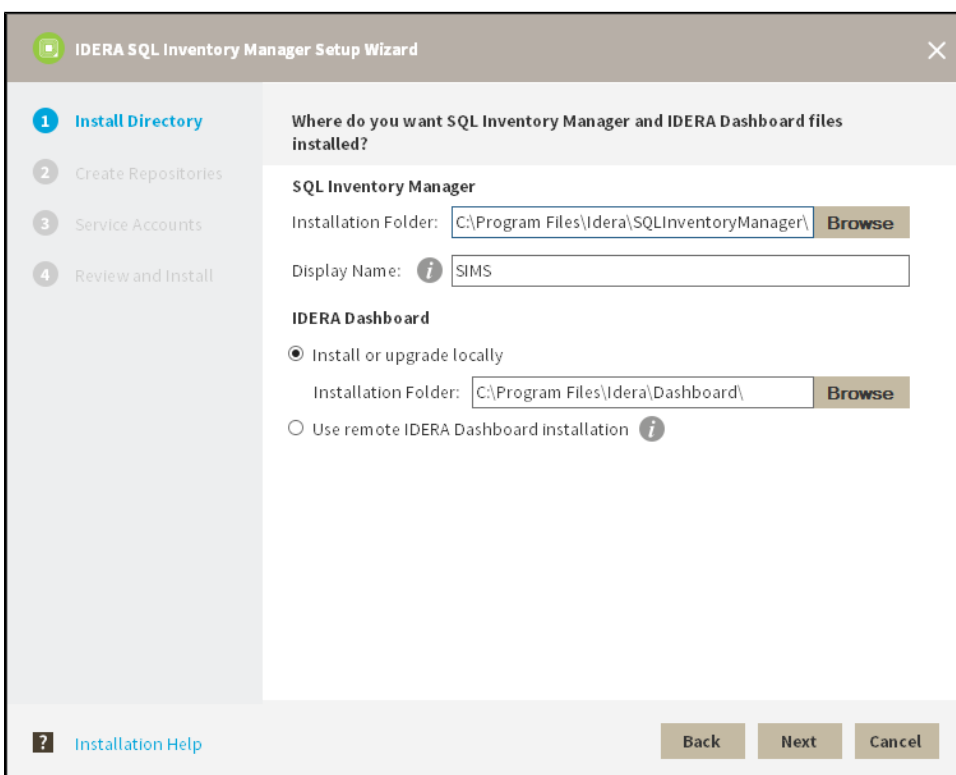
1. Open the installer, click **Next**.



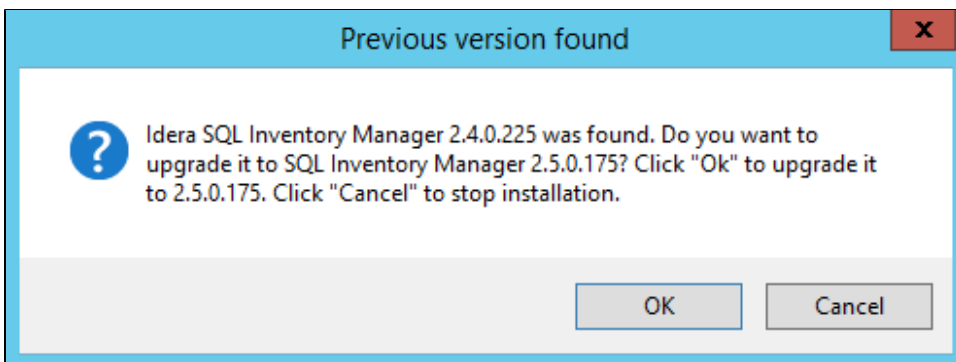
2. Read the License Agreement. If you agree, click **I accept the Terms and Conditions** and then click **Next**.



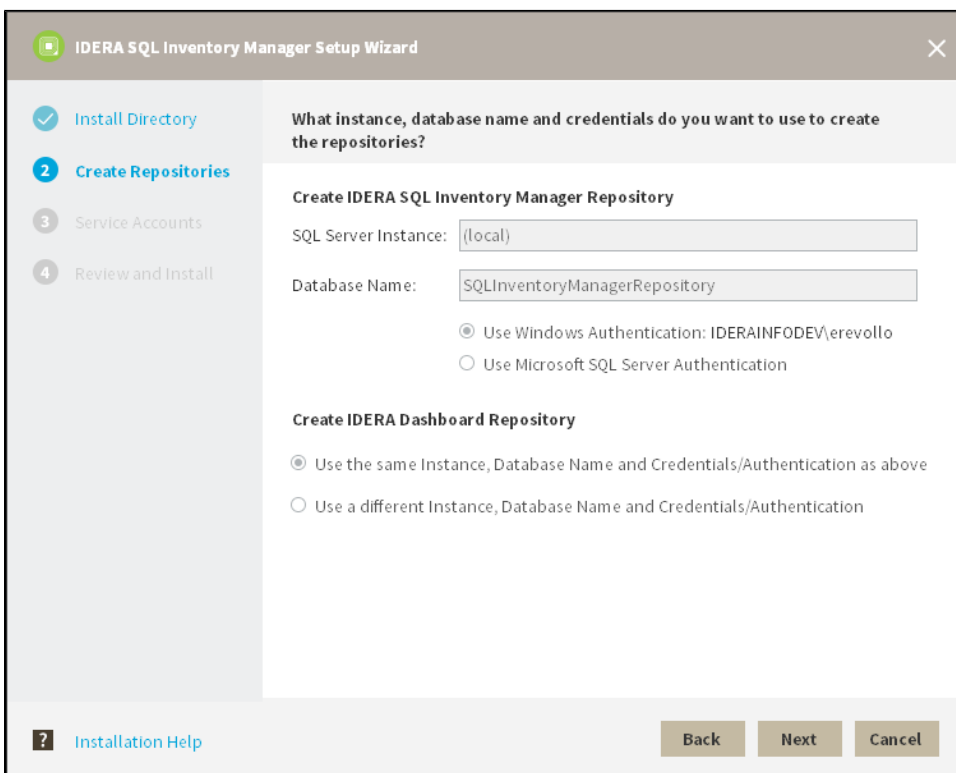
3. Select **Install or upgrade locally** and click **Next**.



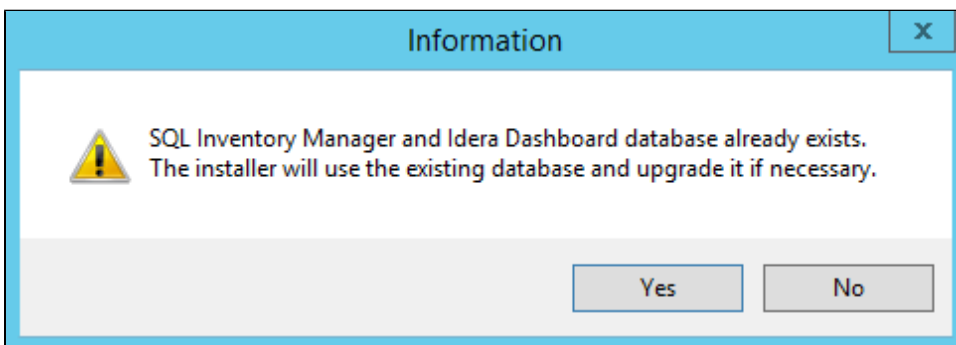
4. The IDERA SQL Inventory Manager installer detects if you have any previous installation and prompts you if you want to upgrade. Click **OK** to continue.



5. On the **Create Repository** section click **Next**.



6. The IDERA SQL Inventory Manager installer detects if you have any previous Repositories and prompts you to upgrade. Click **Yes** to upgrade your previously existing repositories.



7. Enter your service credentials and click **Next**. For more information you can refer to [Installing SQL Inventory Manager](#).

The screenshot shows the 'IDERA SQL Inventory Manager Setup Wizard' window. The left sidebar contains four steps: 'Install Directory' (checked), 'Create Repositories' (checked), '3 Service Accounts' (active), and '4 Review and Install'. The main content area is titled 'What service accounts do you want to use for SQL Inventory Manager and IDERA Dashboard?'. It includes a paragraph explaining that service accounts will be used for information collection and as the default user. Below this, there are two sections for service accounts. The first section, 'Service Account for IDERA SQL Inventory Manager', has a 'Domain\UserName:' field with the value 'IDERAINFODEV\erevollo' and an empty 'Password:' field. The second section, 'Service Account for IDERA Dashboard', has an information icon and two radio button options: 'Use the same Credentials/Authentication as above' (selected) and 'Use a different Credentials/Authentication'. At the bottom, there is an 'Installation Help' link with a question mark icon, and three buttons: 'Back', 'Next', and 'Cancel'.

IDERA SQL Inventory Manager Setup Wizard

✓ Install Directory
✓ Create Repositories
3 Service Accounts
4 Review and Install

What service accounts do you want to use for SQL Inventory Manager and IDERA Dashboard?

The Service Accounts will be used to collect information and will also be the default user to log into the application. You can log into the IDERA Dashboard to create additional users after installation.

Service Account for IDERA SQL Inventory Manager

Domain\UserName:

Password:

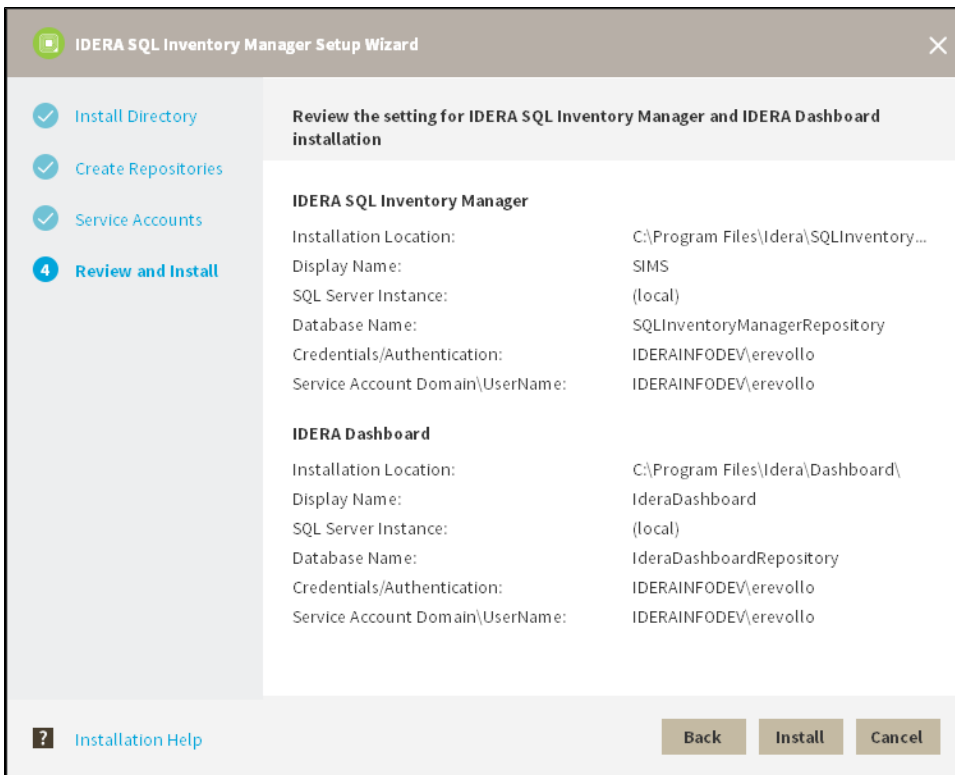
Service Account for IDERA Dashboard ⓘ

☒ Use the same Credentials/Authentication as above
☐ Use a different Credentials/Authentication

? Installation Help

Back Next Cancel

8. Review your settings and click **Install** to continue. If you want to change any of your settings click **Back**.




- After the installation is finished, you can choose to Launch IDERA SQL Inventory Manager immediately.

When IDERA SQL Inventory Manager launches on your browser, you should use your Windows user account with your respective password to log in to the product. Please take into account that IDERA SQL Inventory Manager does not store passwords

Keep in mind that with the upgrade to the latest version:

- You keep your previously registered instances and their respective data.
- Services continue to run on same port as before the upgrade.
- Home page Web URL does not change.

 Take into account that if you install a new version of IDERA SQL Inventory Manager in a distributed environment where previous versions of repositories were installed, these repositories will be updated but will remain linked to previous services. To avoid this issue you can:

- Uninstall the previous IDERA SQL Inventory Manager version to unlink repositories from previous services
- Upgrade to a new IDERA SQL Inventory Manager version, launching the installer from the server machine where the previous services were installed

[IDERA](#) | [Products](#) | [Purchase](#) | [Support](#) | [Community](#) | [Resources](#) | [About Us](#) | [Legal](#)