


Installing SQL Inventory Manager

This section guides you through the installation of Idera SQL Inventory Manager. You can install Idera SQL Inventory Manager on any computer that meets or exceeds the [product requirements](#).

Before you install SQL Inventory Manager, be sure to have:

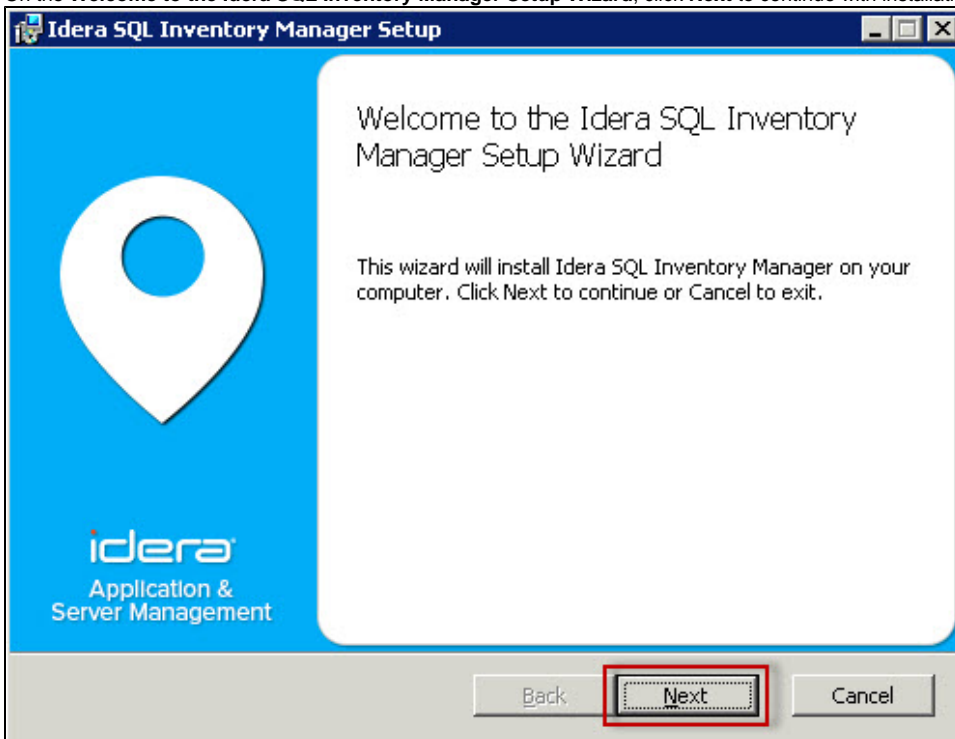
- The [Idera Dashboard](#) installed. SQL Inventory Manager integrates with the Idera Dashboard.
- A local administrator account on the machine you are installing the product.
- A host machine for SQL Inventory Manager services.
- A host SQL Server for the product databases.
- A service account with permissions to read/write and create databases and update their schemas.

 You can also grant SQL Inventory Manager Product Administrator permissions in the Idera Dashboard. For more information, see [Managing users in the Idera Dashboard](#).

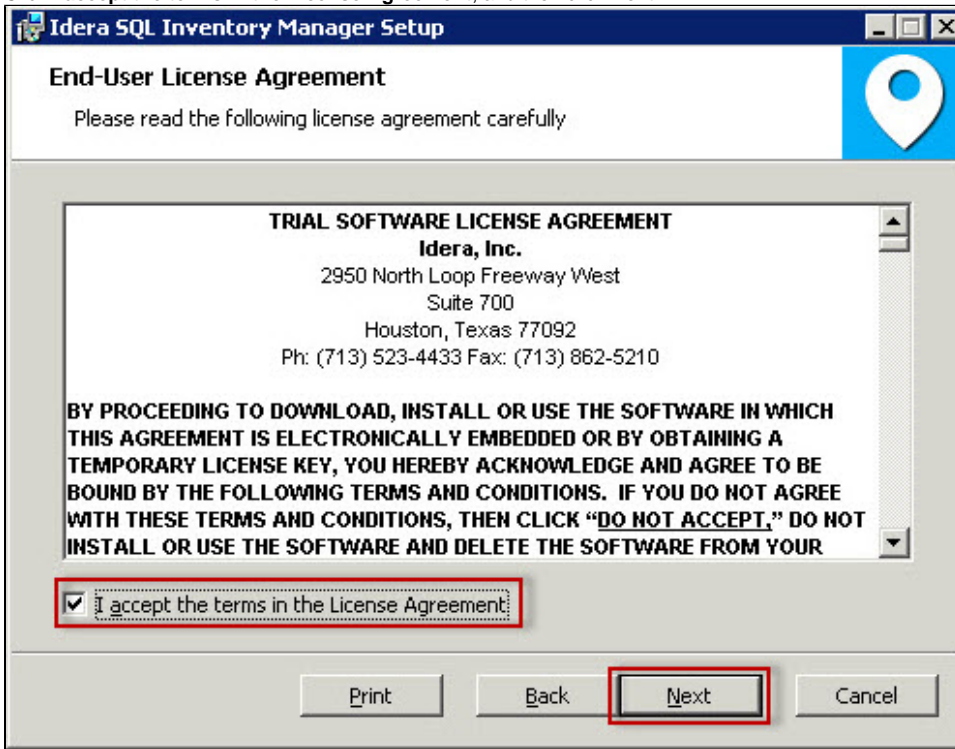
Installing Idera SQL Inventory Manager

Before you install SQL Inventory Manager, be sure to meet the requirements mentioned before. Open the installer and follow these steps:

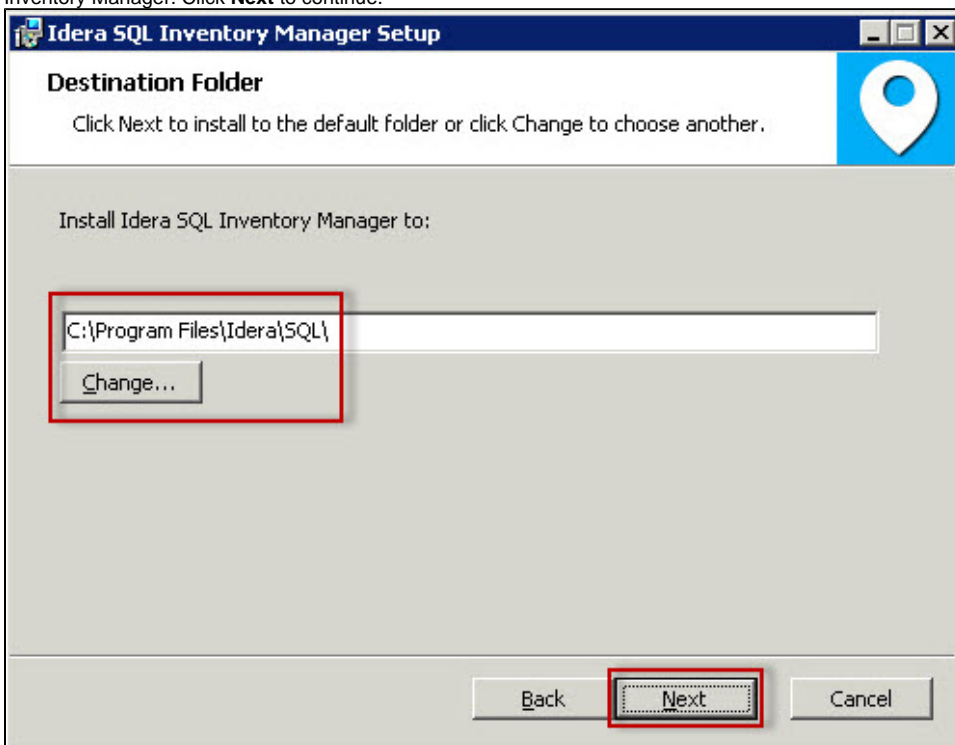
1. On the **Welcome to the Idera SQL Inventory Manager Setup Wizard**, click **Next** to continue with installation.



2. Click **I accept the terms in the License Agreement**, and then click **Next**.

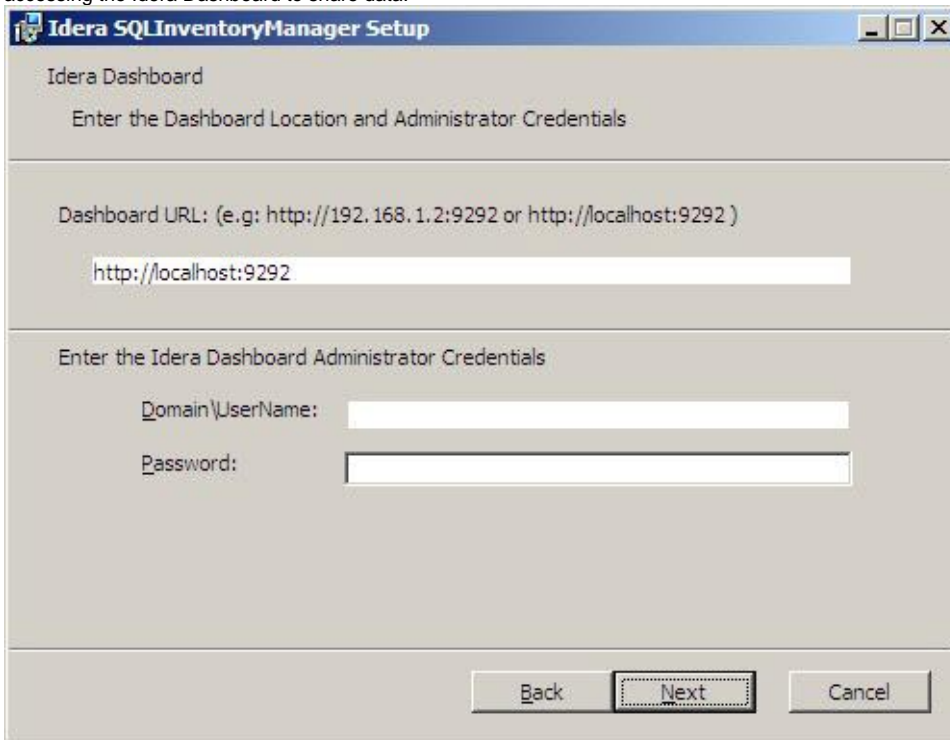


3. On the Destination Folder page, click **Next** to install to the default folder or click **Change** to select the directory where you want to install SQL Inventory Manager. Click **Next** to continue.

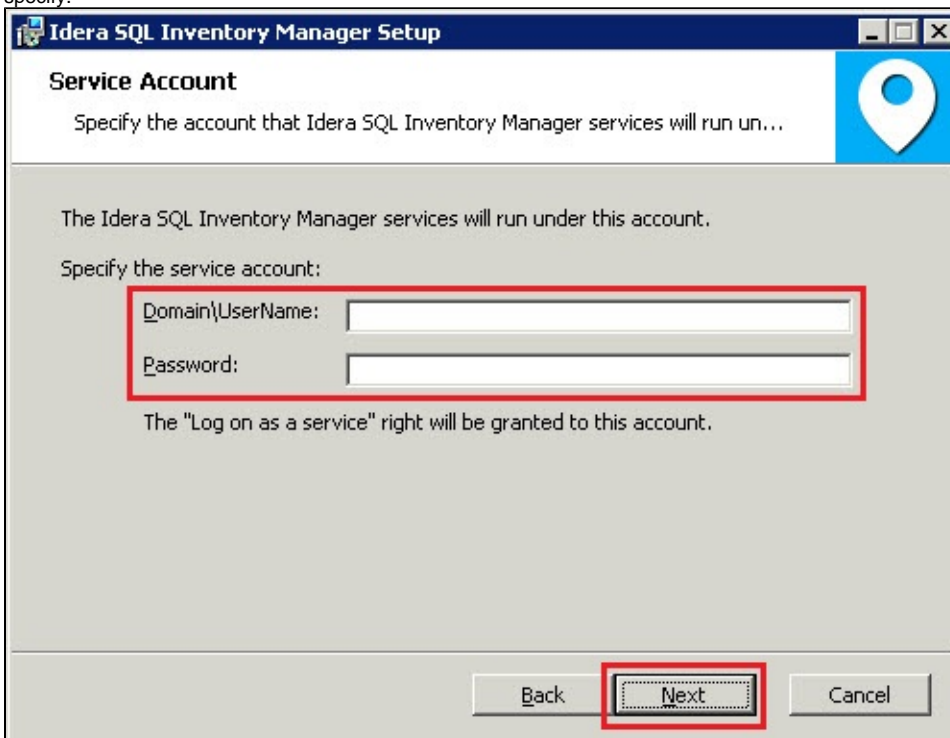


4. On the Idera SQL Inventory Manager Idera Dashboard page, specify:
- the URL of the Idera Dashboard
 - the Idera Dashboard Administrator User Name
 - the Idera Dashboard Administrator user account Password
5. Click **Next**.

6. Use the format `<Domain Name>\<User Name>` when typing the administrator credentials. SQL Inventory Manager uses this account when accessing the Idera Dashboard to share data.



7. On the Idera SQL Inventory Manager Service Account page, specify the **User Name** and **Password**, under which the services will run, and then click **Next**. Use the format `<Domain Name>\<User Name>` when typing the User Name. SQL Inventory Manager uses this account to connect, discover, and gather configuration information from SQL Servers. The installer grants the "Log on as a Service" right to the account that you specify.



8. On the Service Ports section, determine which ports you want to use for the SQL Inventory Manager Collection Service and for the Web Application Service. You must verify that the Firewall allows TCP (Transmission Control Protocol) traffic through your specified ports.

By default, SQL Inventory Manager uses ports 9275 and 9276 for the Collection and Web Application services respectively. Click **Next**.



Port values should be between 1 and 65535.

Keep in mind, that browsers may block some specific ports. To check a list of all blocked ports on Mozilla Firefox, click [here](#).

Idera SQL Inventory Manager Setup

Service Ports

Specify the ports to be used by SQL Inventory Manager services.

The Idera SQL Inventory Manager services will use these ports.

Specify the ports:

Collection Service Port:	9275
Web Application Service Port:	9276

If Firewall is enabled make sure it allows TCP traffic through these ports.

9. On the Idera SQL Inventory Manager Repository page, specify the host SQL Server instance where SQL Inventory Manager will create the Inventory Manager and Core databases and type their respective names. These databases store collected data, alert information, and alert configuration settings.

By default, the setup program uses your Windows logon account to create the Repository databases, but you can also choose to use Microsoft SQL Server connection credentials by checking the option **Use Microsoft SQL Server Authentication**. When you choose this option, a new

window automatically opens, type the respective SQL Server login and password.

The image shows two screenshots of the Idera SQL Inventory Manager Setup wizard. The first screenshot is the 'Service Ports' step, and the second is the 'Repository Databases' step. Both screenshots have a red box highlighting the 'Next' button.

Idera SQL Inventory Manager Setup

Service Ports

Specify the ports to be used by SQL Inventory Manager services.

The Idera SQL Inventory Manager services will use these ports.

Specify the ports:

Collection Service Port:	9275
Web Application Service Port:	9276

If Firewall is enabled make sure it allows TCP traffic through these ports.

Back Next Cancel

Idera SQL Inventory Manager Setup

Repository Databases

Specify the name and location of the SQL Inventory Manager repository da...

Specify the host SQL Server and the name of the Repository databases.

SQL Server Instance:	(local)
Inventory Manager Databa...	IderaInventoryManagerRepository
Core Database Name:	IderaCoreRepository

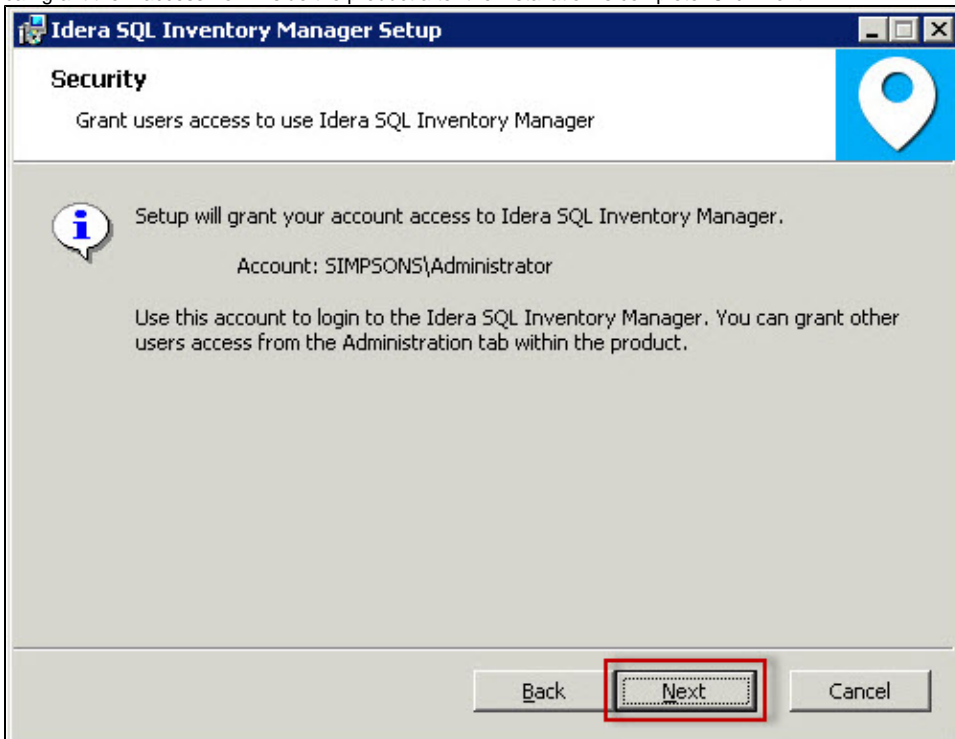
Connection Credentials:

By default, the setup program uses the credentials of your Windows logon account to create the Repository databases.

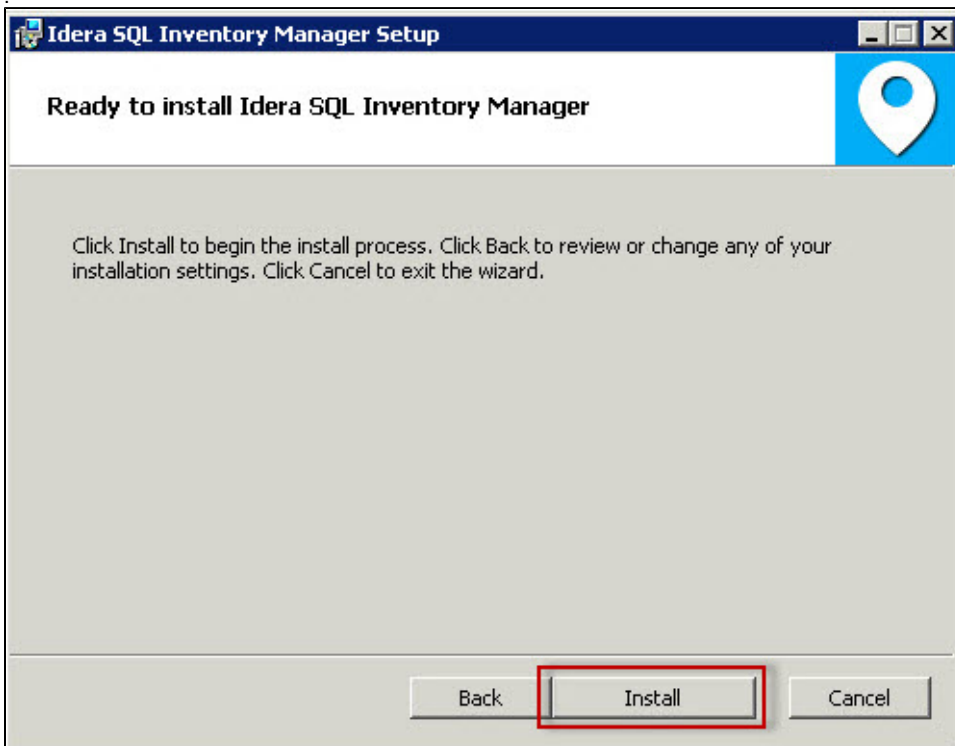
☐ Use Microsoft SQL Server Authentication Change...

Back Next Cancel

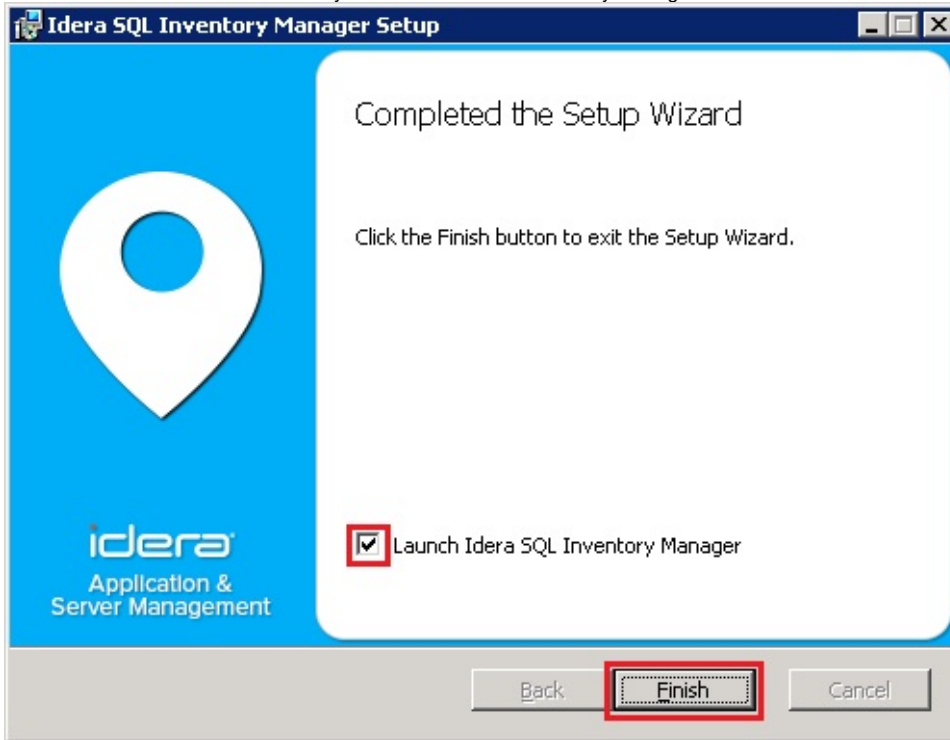
10. The user that installs SQL Inventory Manager has access to the product. If you need other users to have access to SQL Inventory Manager, you can grant them access from inside the product after the installation is complete. Click **Next**.



11. On the next section, click **Install** if you are ready to start the installation. If you want to review or change any of your installation settings, click **Back**.



12. After the installation is complete, click **Finish**. You can check the box for launching SQL Inventory Manager immediately after installation. Alternatively, you can access SQL Inventory Manager web application through the following link: <http://<ServerName>:9276> where ServerName is the name of the machine on which you installed the SQL Inventory Manager services.



What account should you use for logging in to SQL Inventory Manager?

When SQL Inventory Manager launches on your browser, you should use your Windows user account with your respective password to log in to the product. Please take into account that SQL Inventory Manager does not store passwords.

Need more help? Search the [Idera Customer Support Portal](#).

Idera Website	Products	Purchase	Support	Resources	Community	About Us	Legal
-------------------------------	--------------------------	--------------------------	-------------------------	---------------------------	---------------------------	--------------------------	-----------------------