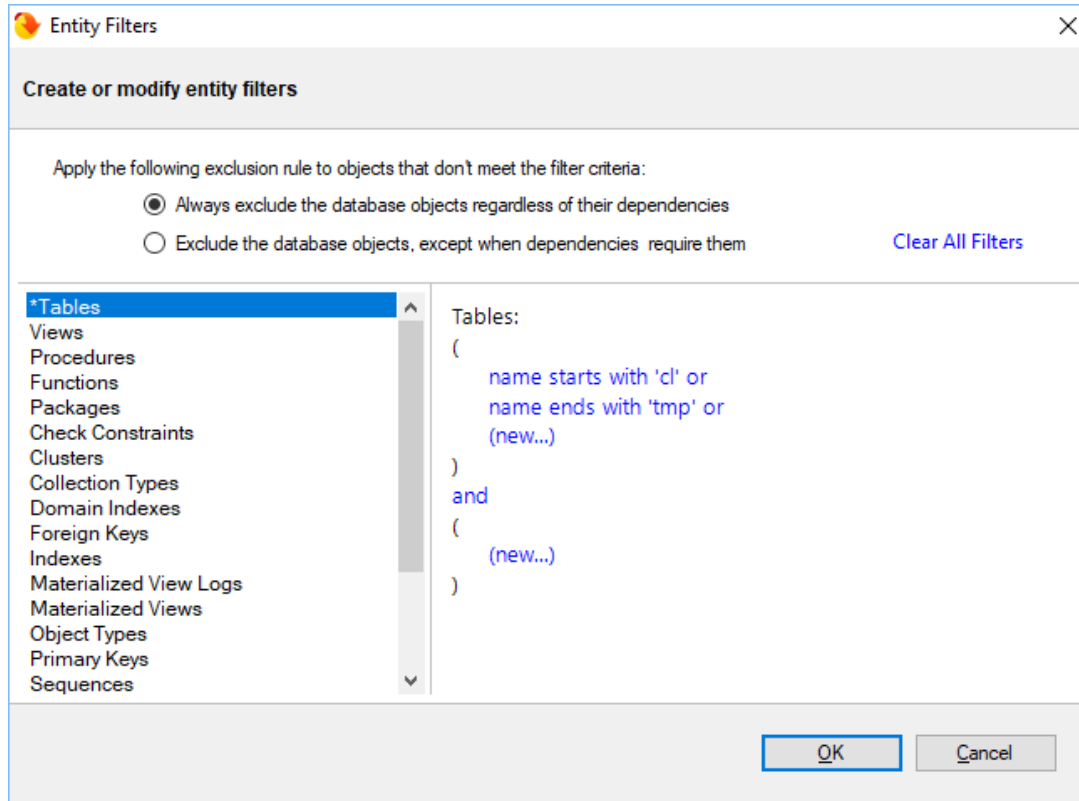


Schema Compare Entity Filters Overview

The entity filter is a collection of conditions organized into units called groups. A single group contains conditions combined with the same operator: AND/OR. The groups themselves are combined with an operator that can be the same or different from the conditions' operator.



There is no limit to the number of groups that a filter can have or the number of conditions contained in a group. To keep the filter simple, we recommend that you place all conditions that can be combined with a common operator in the same group. Create additional groups only if you need conditions that require different operators.

The following filter, for example, defines two conditions combined with the AND operator. It requires only one group.

- name does not start with "v_temp" and
- name does not contain "temp"

The following filter contains two conditions combined with the AND operator and requires only one group:

- name does not start with "v_temp" and
- name does not contain "temp"


The following table filter, on the other hand, contains conditions that require different operators and two groups are needed:

Group 1:

- name starts with "emp" or
- name ends with "emp"

Group 2:

- name does not start with "tmp" and
- name does not start with "#" and
- name does not start with "##"

 An entity filter, similar to other comparison settings, is saved in the comparison session and it is applied automatically when you launch the session.

[IDERA](#) | [Products](#) | [Purchase](#) | [Support](#) | [Community](#) | [Resources](#) | [About Us](#) | [Legal](#)