

Installing the IDERA Dashboard

- [Version 3.0](#)
- [Version 3.2](#)

This section guides you through the installation of the IDERA Dashboard, a common technology framework for IDERA products.

Before you install the IDERA Dashboard, be sure to have:

- A local administrator account on the machine where you are installing the product.
- Microsoft .NET 4.0 Framework or later installed.



The IDERA Dashboard Web Application service comes with TLS already set up. By default, TLS works with a self-signed certificate. This certificate can be used for encryption only and does not prove the identity of the server.

That default certificate is not signed by any well-known Certification Authority (CA), and is intended only for use in testing purposes. When a user attempts to open the TLS version of the IDERA Dashboard Web interface, a warning appears in the browser window. For more information about running the IDERA Dashboard over SSL, see [Run IDERA Dashboard over TLS \(HTTPS\)](#).

Start your installation

You can install the IDERA Dashboard on any computer that meets or exceeds the product requirements.



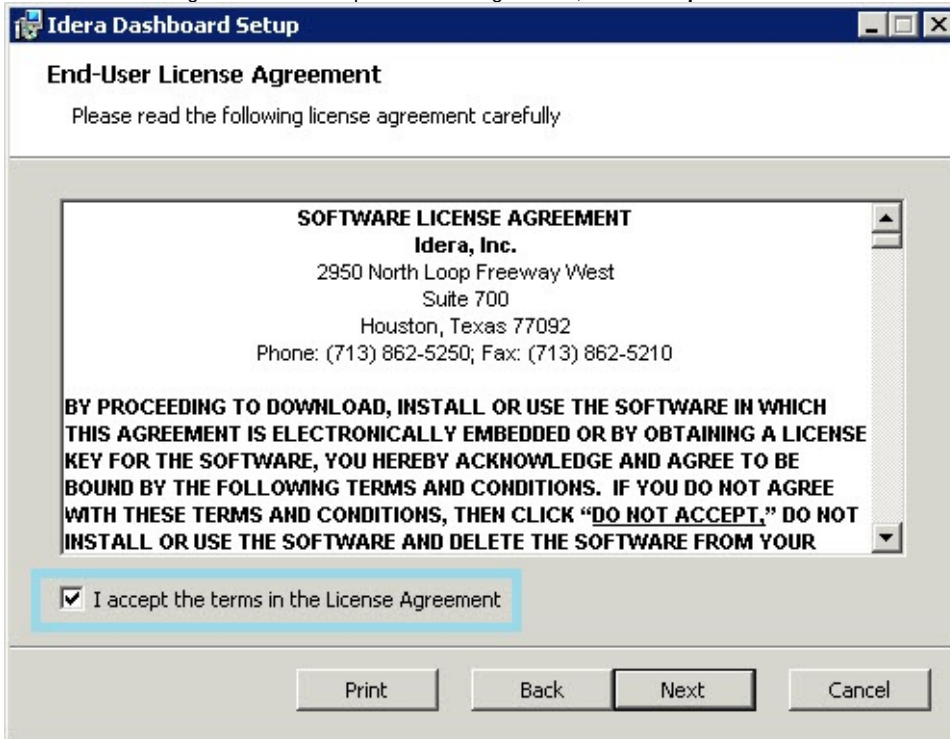
The IDERA Dashboard does not support Cluster Environments.

To start installing the IDERA Dashboard:

1. Run `IderaDashboard` in the root of the installation kit.
2. On the **Welcome to the IDERA Dashboard Setup Wizard**, click **Next** to continue with installation.

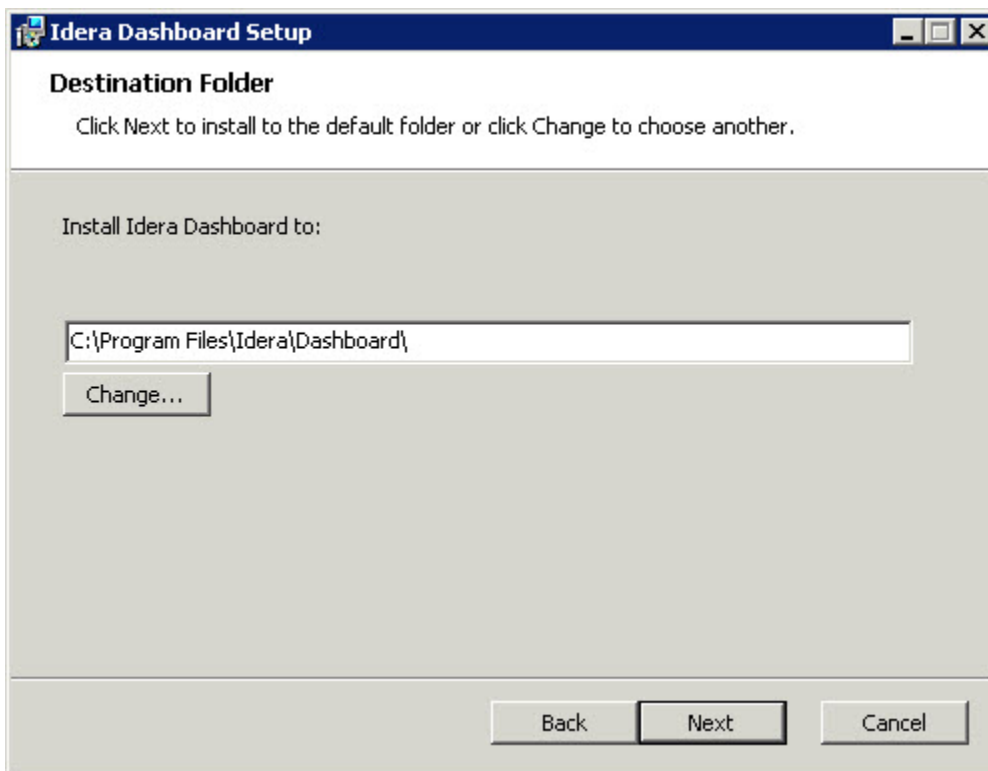


3. Review the license agreement. To accept this license agreement, click **I accept the terms in the License Agreement**, and then click **Next**.



Select an installation location

You can use the default install location or specify a different path (**Change**). For your first install, we recommend using the default location. Click **Next** to continue with the installation.

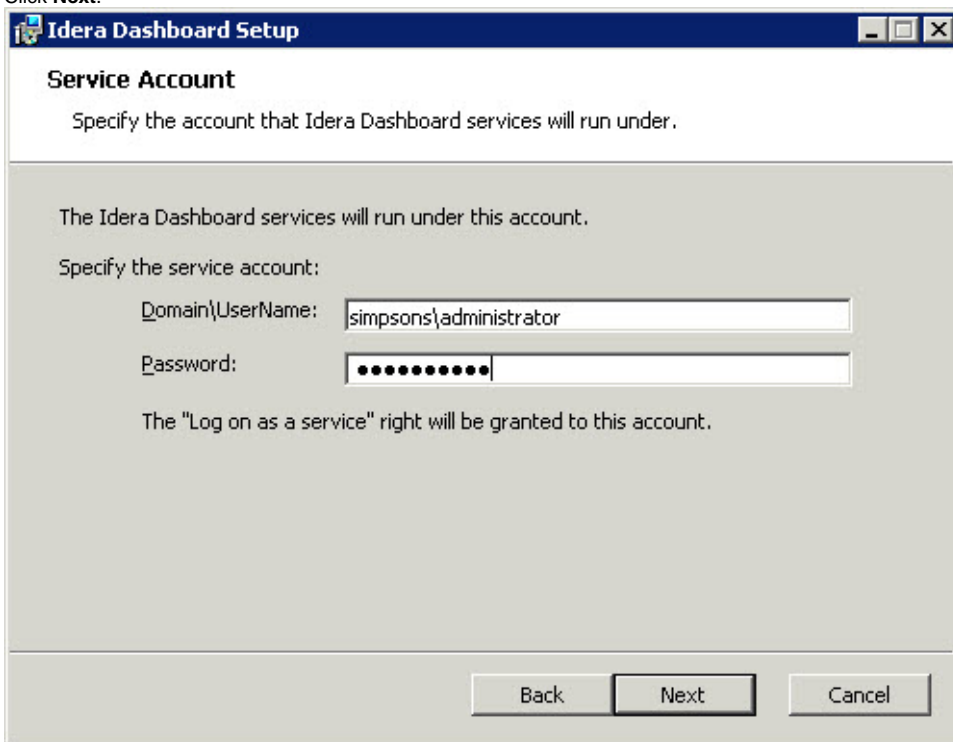


Select a Windows user account to use for the service account

The IDERA Dashboard uses this account to connect, discover, and gather configuration information from SQL Servers in your Business environment. The installer grants the "Log on as a Service" right to the account that you specify.

To specify a service account:

1. On the Service Account window, type appropriate credentials in the provided fields under which the services run.
2. Click **Next**.



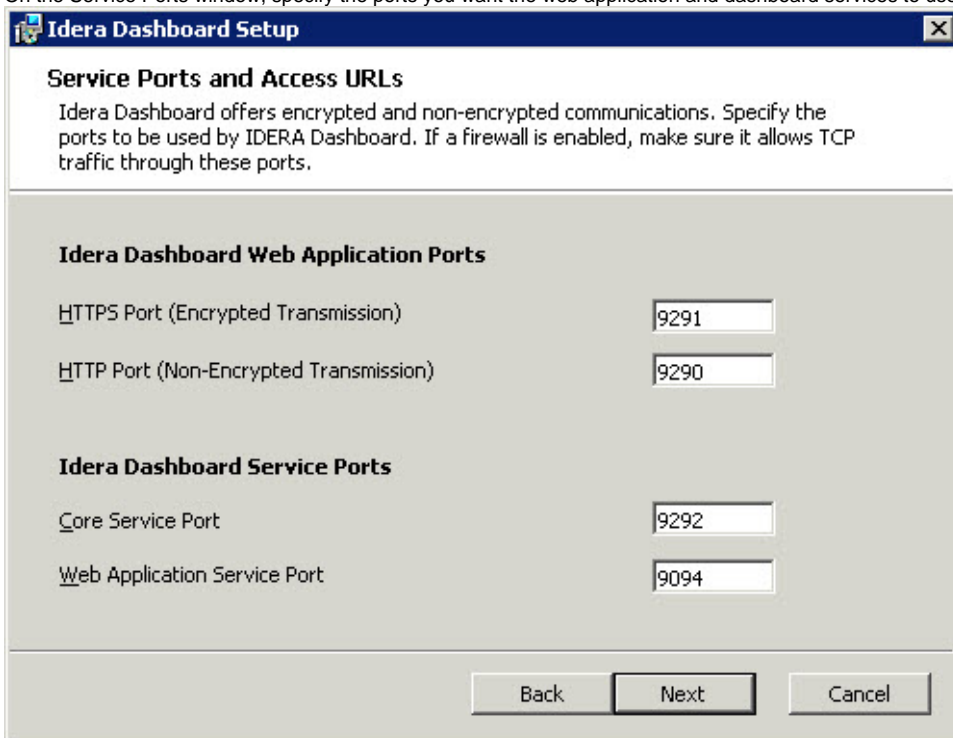
The screenshot shows the 'Service Account' window in the Idera Dashboard Setup. The window title is 'Idera Dashboard Setup'. The main heading is 'Service Account'. Below the heading, it says 'Specify the account that Idera Dashboard services will run under.' The main content area has a light gray background and contains the text 'The Idera Dashboard services will run under this account.' followed by 'Specify the service account:'. There are two input fields: 'Domain\UserName:' with the value 'simpsons\administrator' and 'Password:' with a masked password '*****'. Below these fields, it says 'The "Log on as a service" right will be granted to this account.' At the bottom, there are three buttons: 'Back', 'Next', and 'Cancel'.

Select service ports to use for the IDERA Dashboard

The IDERA Dashboard uses ports **9290**, **9291**, **9292**, and **9294** for the web application and dashboard services respectively. However, you can specify different service ports.

To specify a service port:

1. On the Service Ports window, specify the ports you want the web application and dashboard services to use.



The screenshot shows the 'Service Ports and Access URLs' window in the Idera Dashboard Setup. The window title is 'Idera Dashboard Setup'. The main heading is 'Service Ports and Access URLs'. Below the heading, it says 'Idera Dashboard offers encrypted and non-encrypted communications. Specify the ports to be used by IDERA Dashboard. If a firewall is enabled, make sure it allows TCP traffic through these ports.' The main content area has a light gray background and contains two sections: 'Idera Dashboard Web Application Ports' and 'Idera Dashboard Service Ports'. The 'Idera Dashboard Web Application Ports' section has two input fields: 'HTTPS Port (Encrypted Transmission)' with the value '9291' and 'HTTP Port (Non-Encrypted Transmission)' with the value '9290'. The 'Idera Dashboard Service Ports' section has two input fields: 'Core Service Port' with the value '9292' and 'Web Application Service Port' with the value '9094'. At the bottom, there are three buttons: 'Back', 'Next', and 'Cancel'.

2. Verify that the Firewall allows TCP (Transmission Control Protocol) traffic through your specified ports.

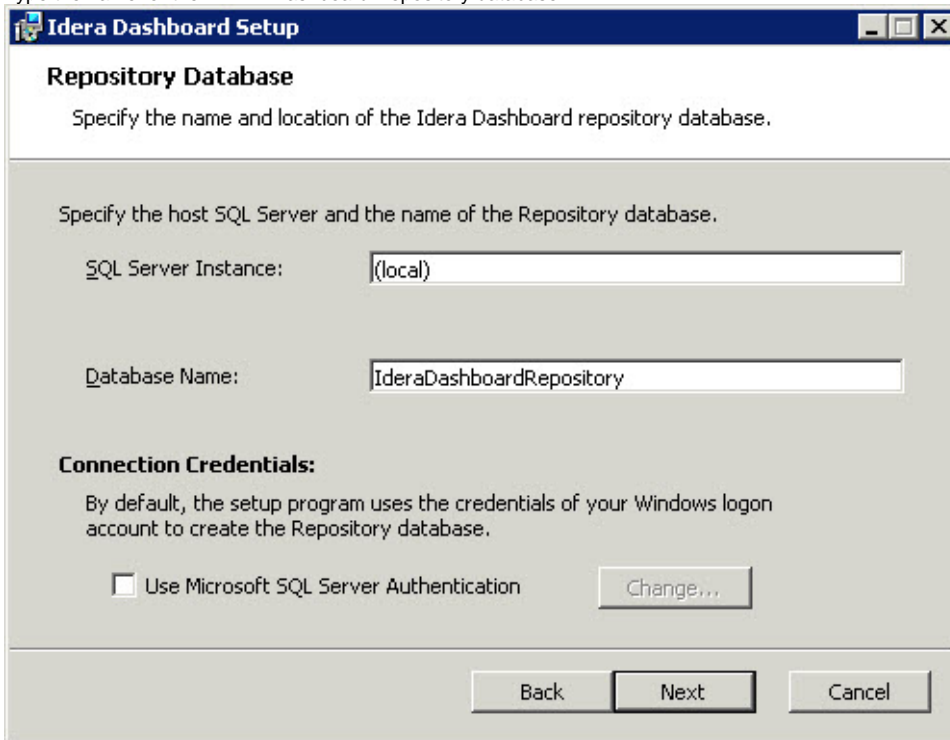
3. Click **Next**.

Select a SQL Server instance to use for the IDERA Dashboard Repository database

The IDERA Dashboard Repository database is where the collected data, alert information, and alert configuration settings are stored.

To specify the SQL Server instance to install the Repository database on:

1. On the Repository Database screen, specify the host SQL Server instance you want to use for the IDERA Dashboard Repository database.
2. Type the name for the IDERA Dashboard Repository database.



Idera Dashboard Setup

Repository Database

Specify the name and location of the Idera Dashboard repository database.

Specify the host SQL Server and the name of the Repository database.

SQL Server Instance:

Database Name:

Connection Credentials:

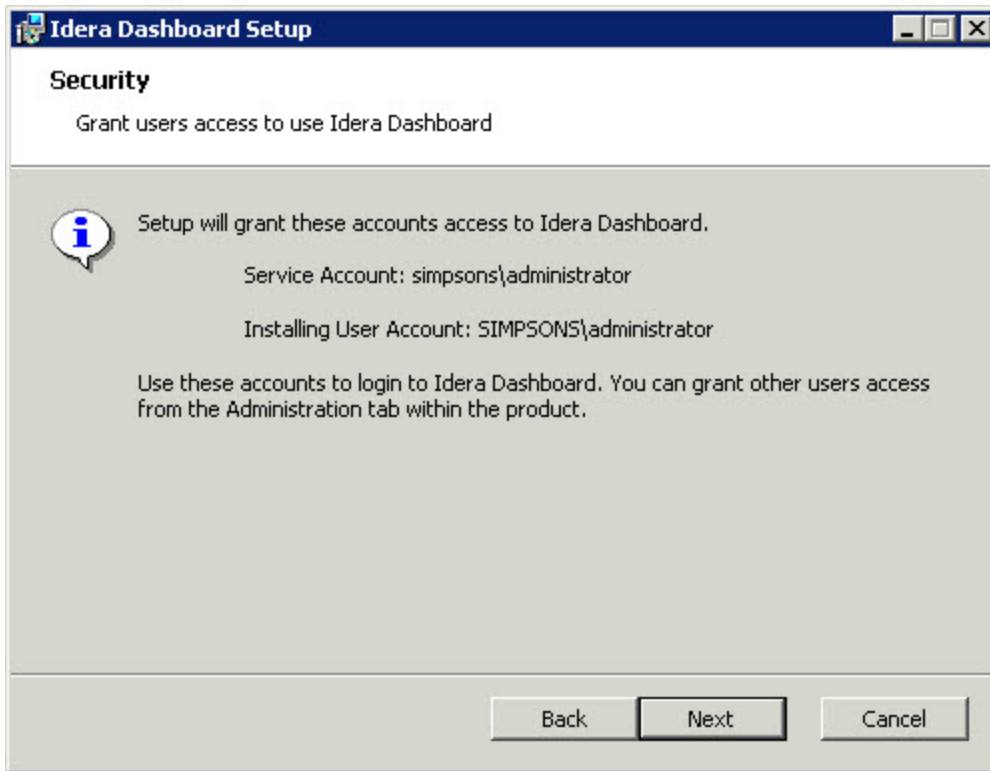
By default, the setup program uses the credentials of your Windows logon account to create the Repository database.

☐ Use Microsoft SQL Server Authentication

3. **If your SQL Server environment uses SQL Server Authentication**, select the check box and click **Change** to enter SQL Server credentials. By default, the IDERA Dashboard uses your Windows credentials when connecting to the Repository database.
4. **If you use Microsoft SQL Server Authentication**, a new window displays where you can type the respective SQL Server login and password.
5. Click **Next**.

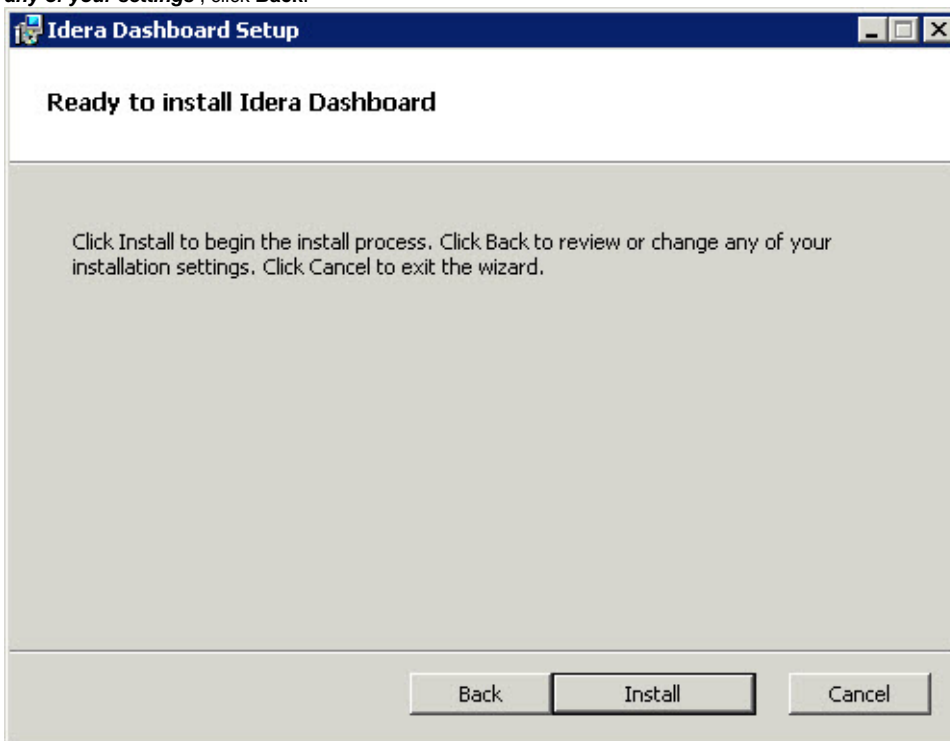
Grant access to the IDERA Dashboard

The user that installs the IDERA Dashboard has access to this application by default as a *Dashboard Administrator*. You can choose whether you want other users to have access to the IDERA Dashboard in the Administration view. To continue with the installation, click **Next**.

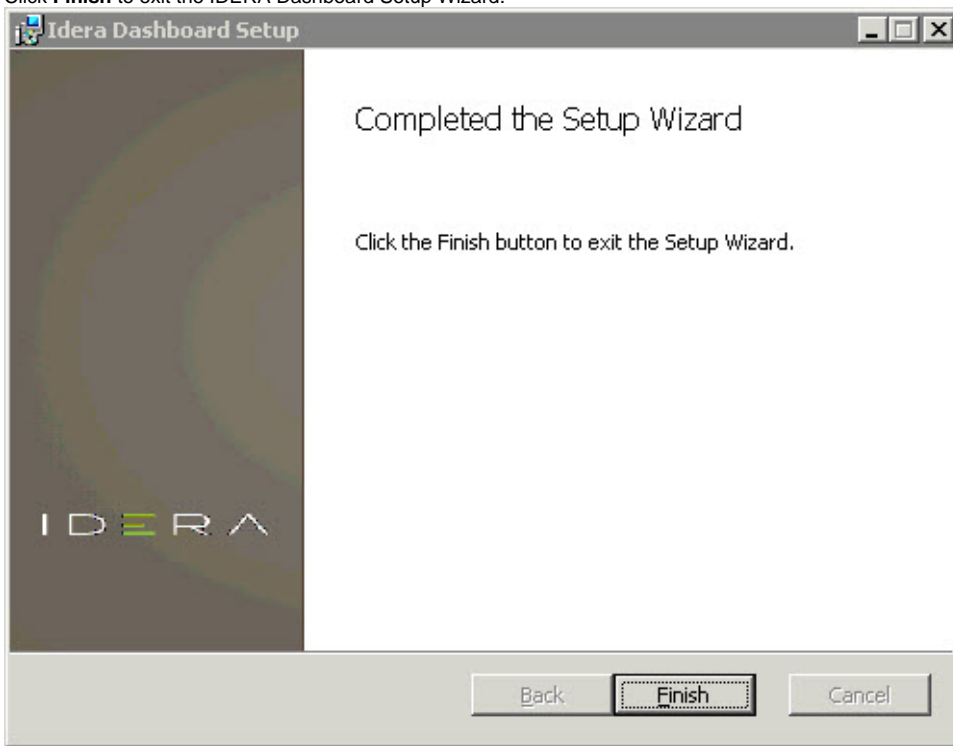


Complete the installation

1. Click **Install** to indicate that you are ready to complete your installation with the configurations you specified. *If you want to review or change any of your settings*, click **Back**.



2. Click **Finish** to exit the IDERA Dashboard Setup Wizard.



The IDERA Dashboard installation is complete.

[IDERA Dashboard](#) provides an integrated user experience for the IDERA products in your environment.

[IDERA](#) | [Products](#) | [Purchase](#) | [Support](#) | [Community](#) | [Resources](#) | [About Us](#) | [Legal](#)