

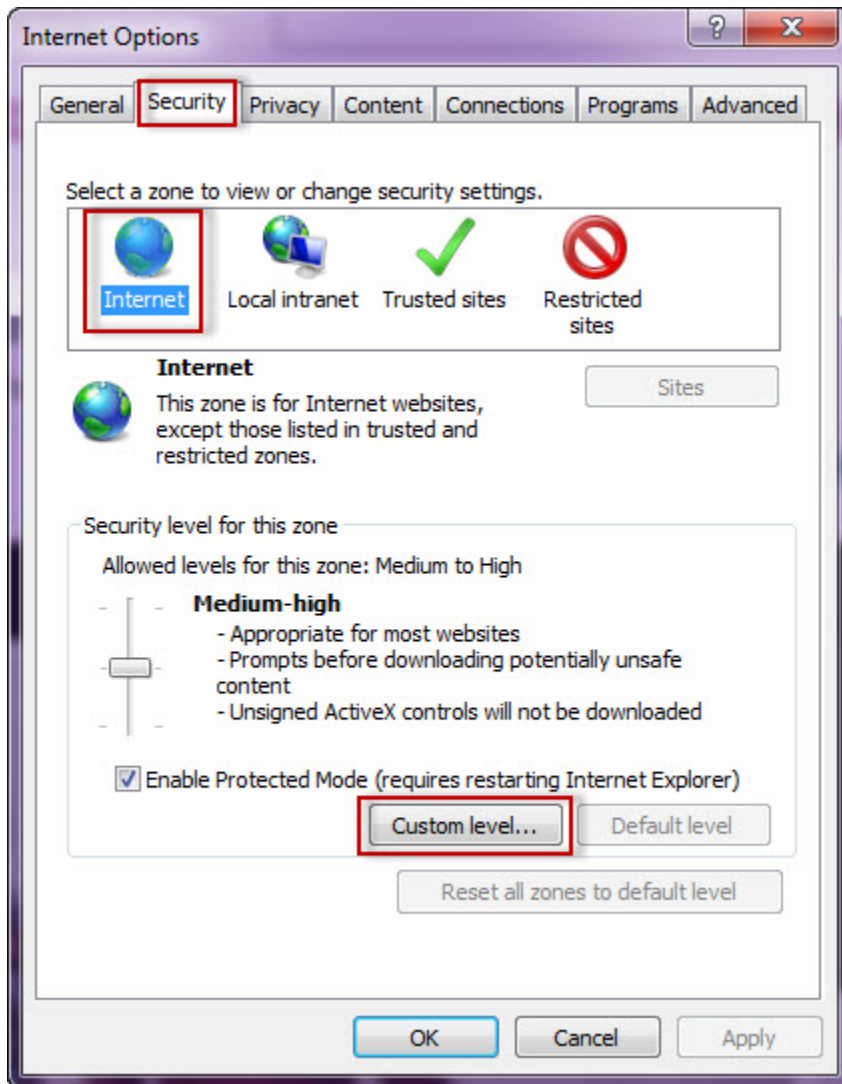
Configuring your browser for Windows Authentication

To be able to use Windows Authentication to log into IDERA Dashboard, you have to configure your internet and browser settings.

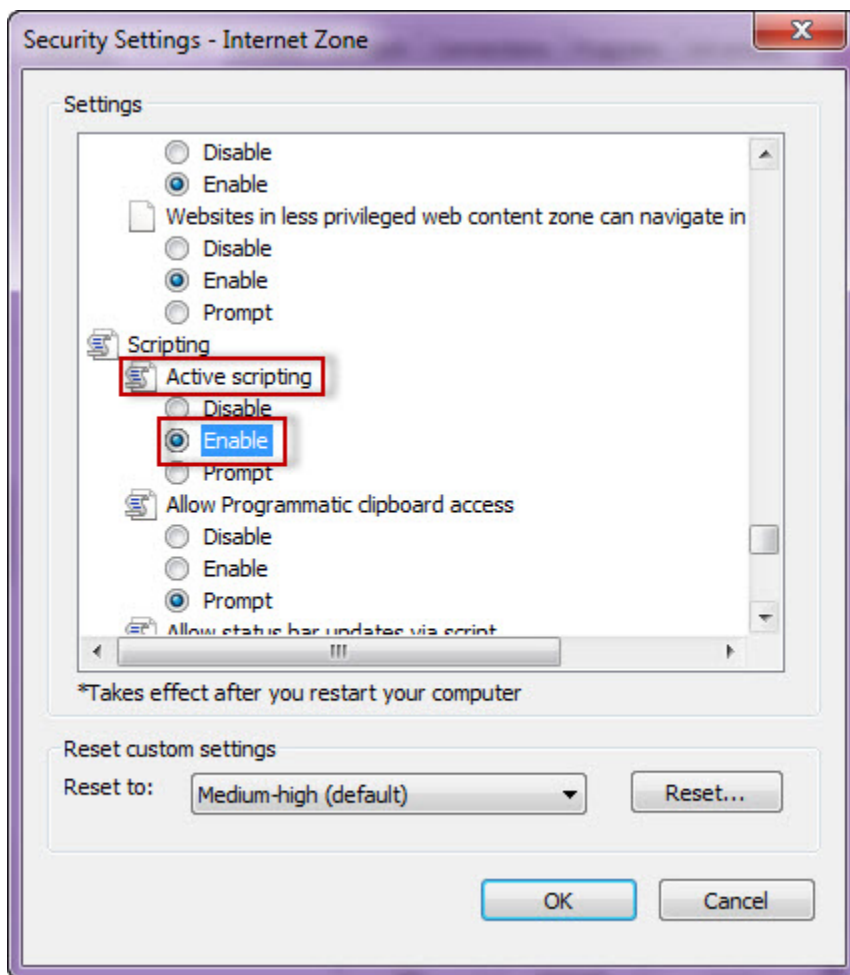
Configuring Internet Explorer 9, 10, and 11

To configure these versions of **Internet Explorer**, follow these steps:

1. Go to **Control Panel** and then **Internet Options**.
2. Click **Security**
3. Click **Internet** and then **Custom Level**.

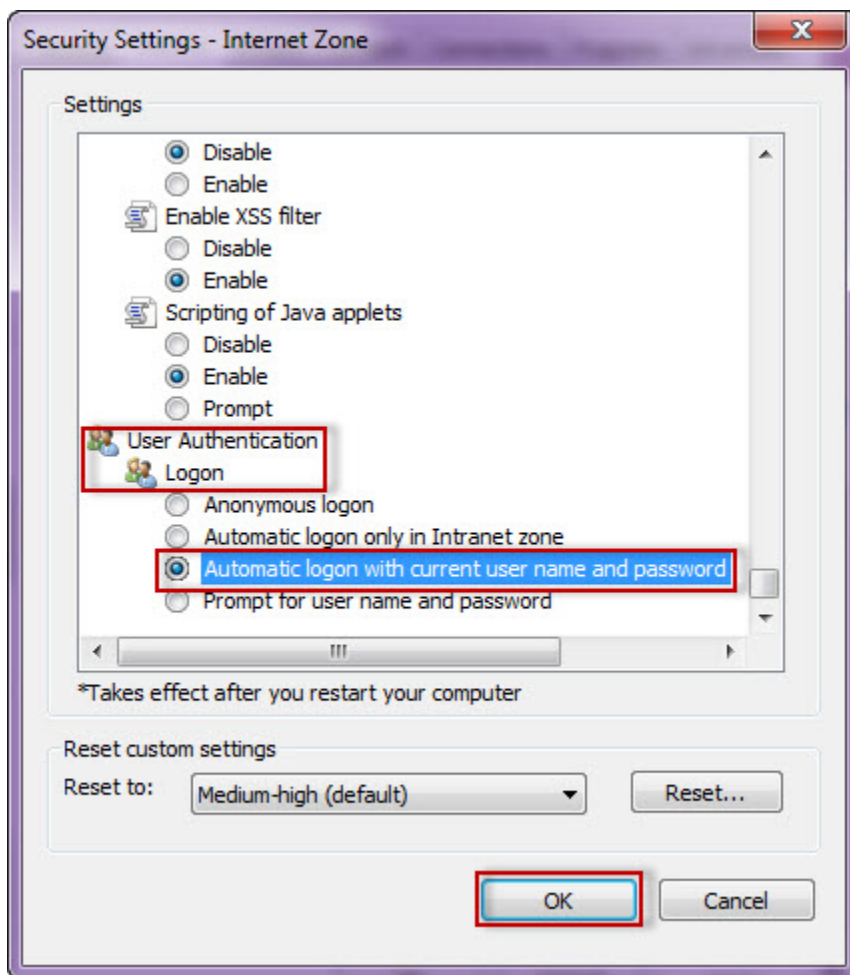


4. Go to Scripting/Active scripting and make sure **Enable** is selected.

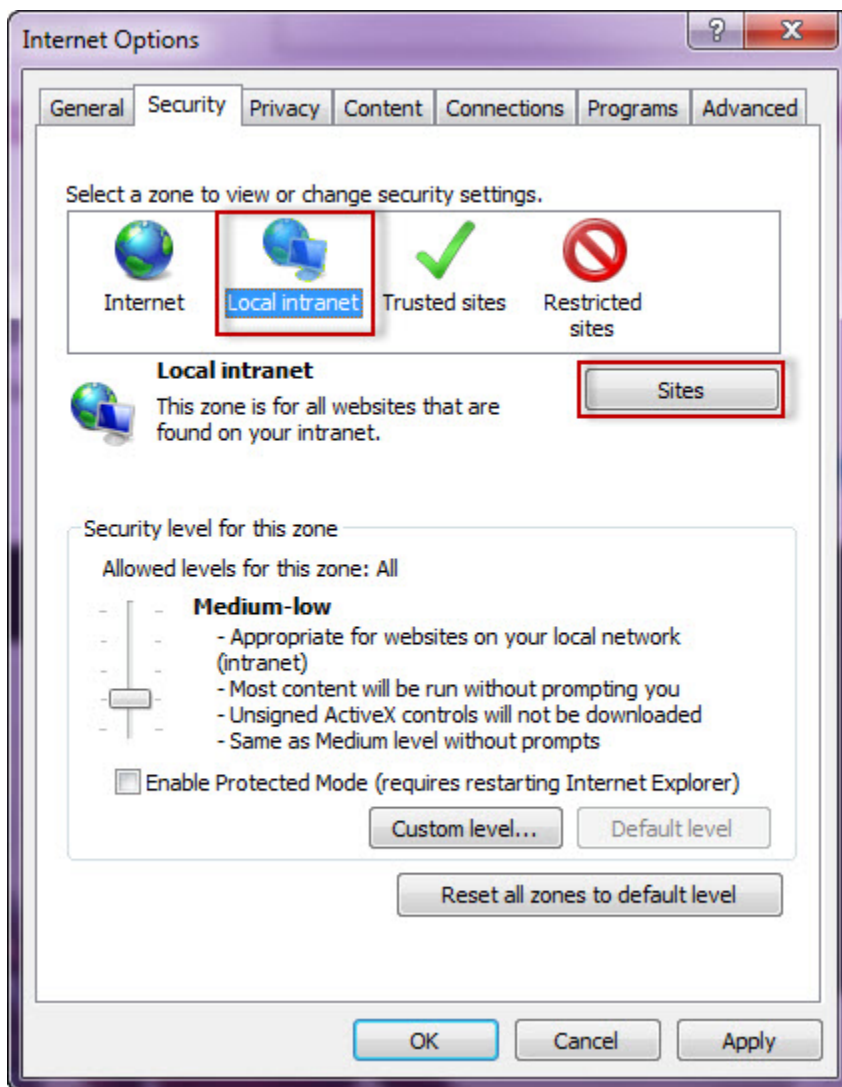


5. Then go to User Authentication/Logon and make sure **Automatic logon with current user name and password** is selected.

6. Click **OK**.

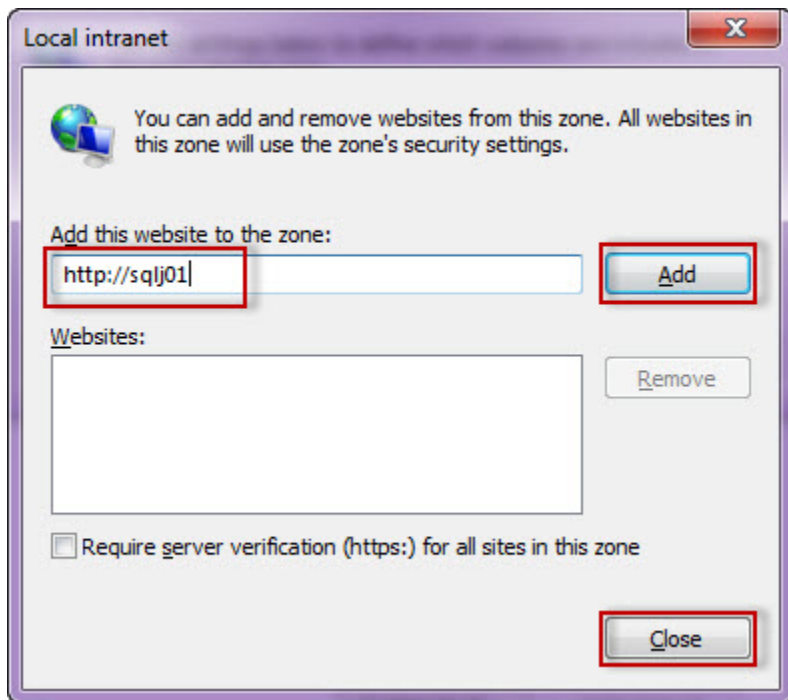


7. Click **Local intranet** and then **Sites**.



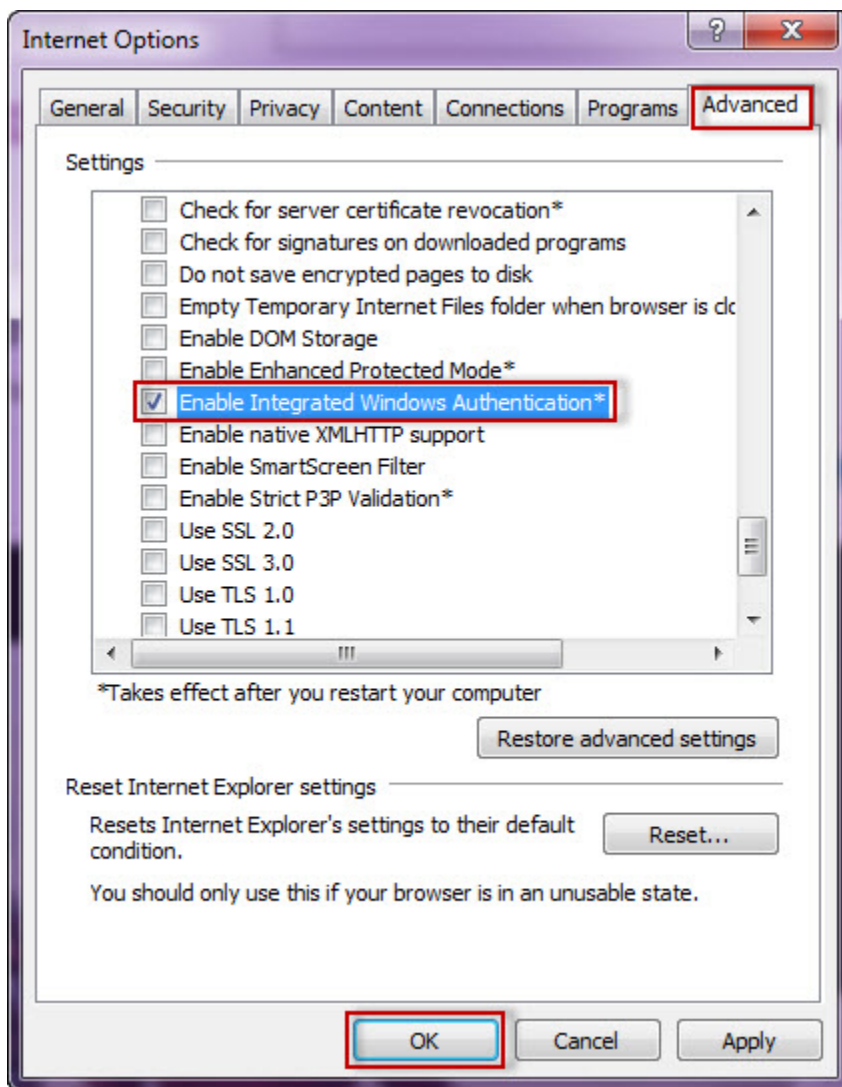
8. Type the URL you are going to use (e.g. `http://sqlj01`) and click **Add**.

9. Click **Close**.

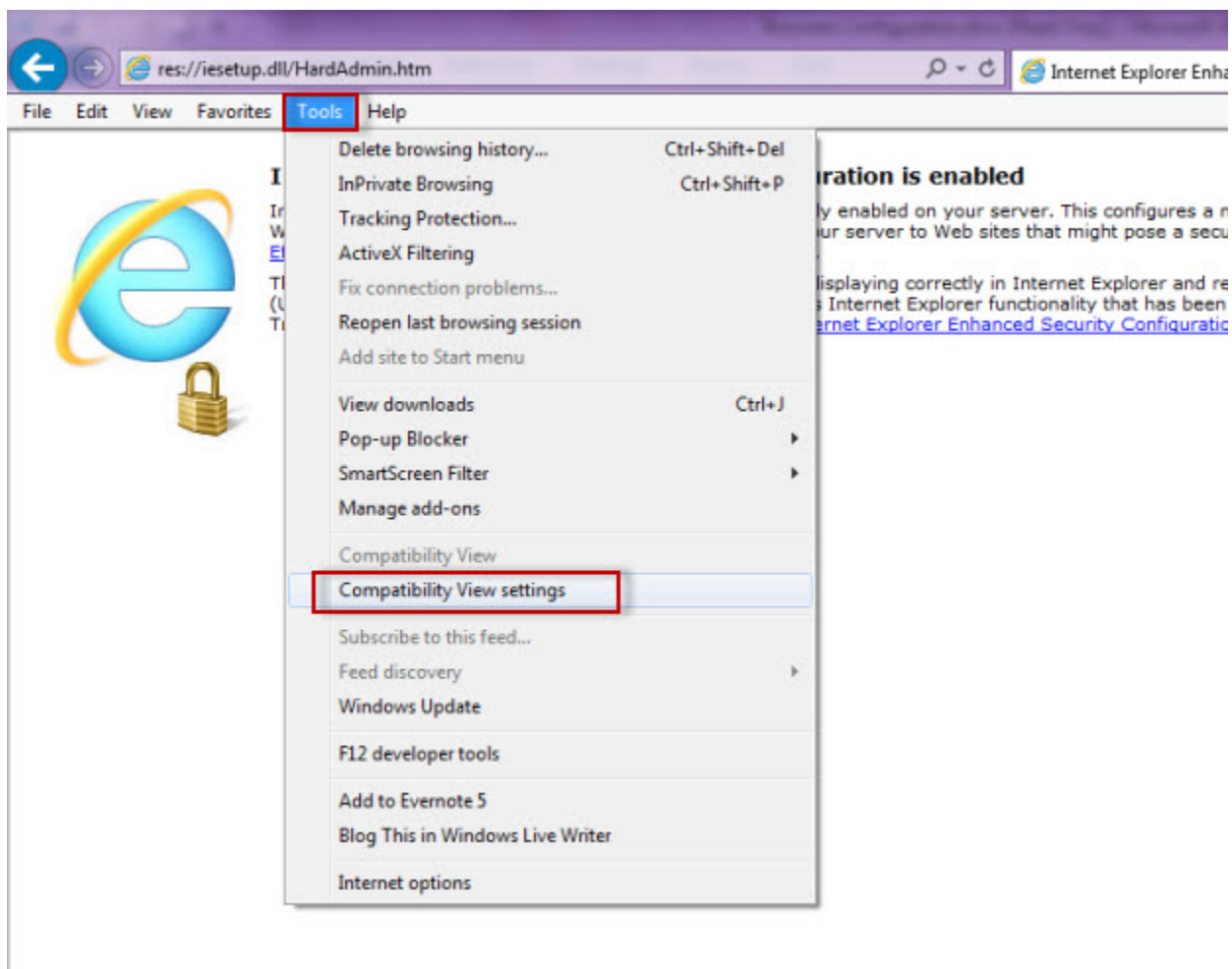


10. Go to **Advanced** and make sure **Enable Integrated Windows Authentication** is selected.

11. Click **OK**.

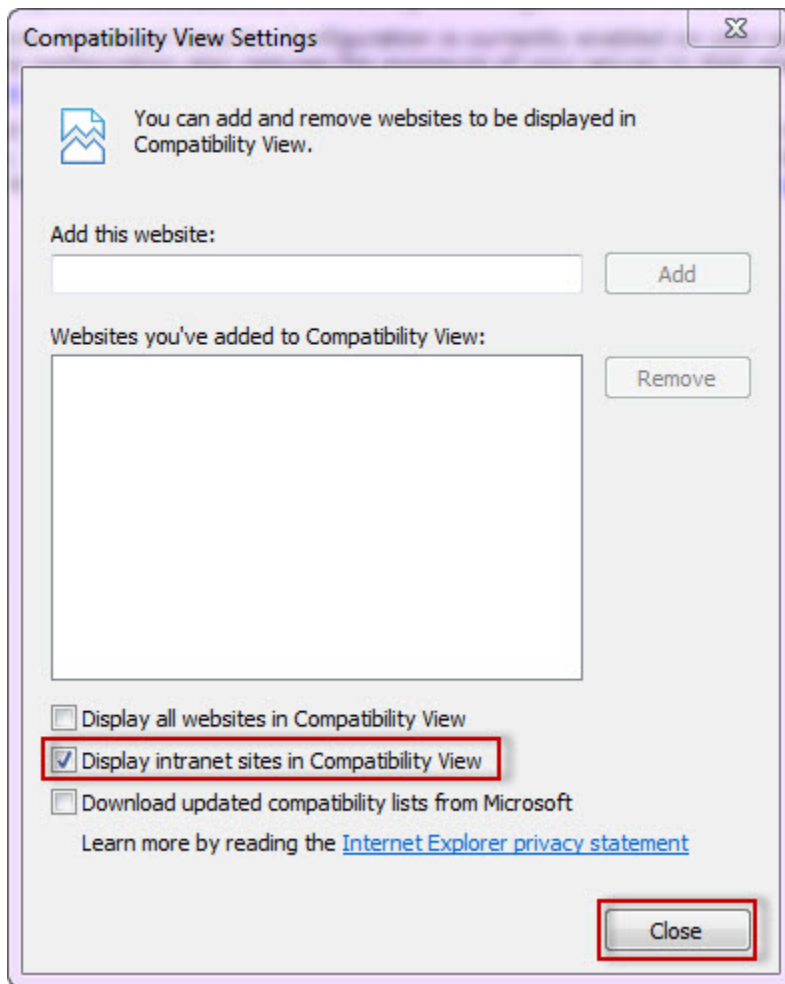


12. Open **Internet Explorer**, go to **Tools** in the menu bar and select **Compatibility View Settings**.



13. In the **Compatibility View Settings** window make sure **Display intranet sites in Compatibility View** is selected.

14. Click **Close**.

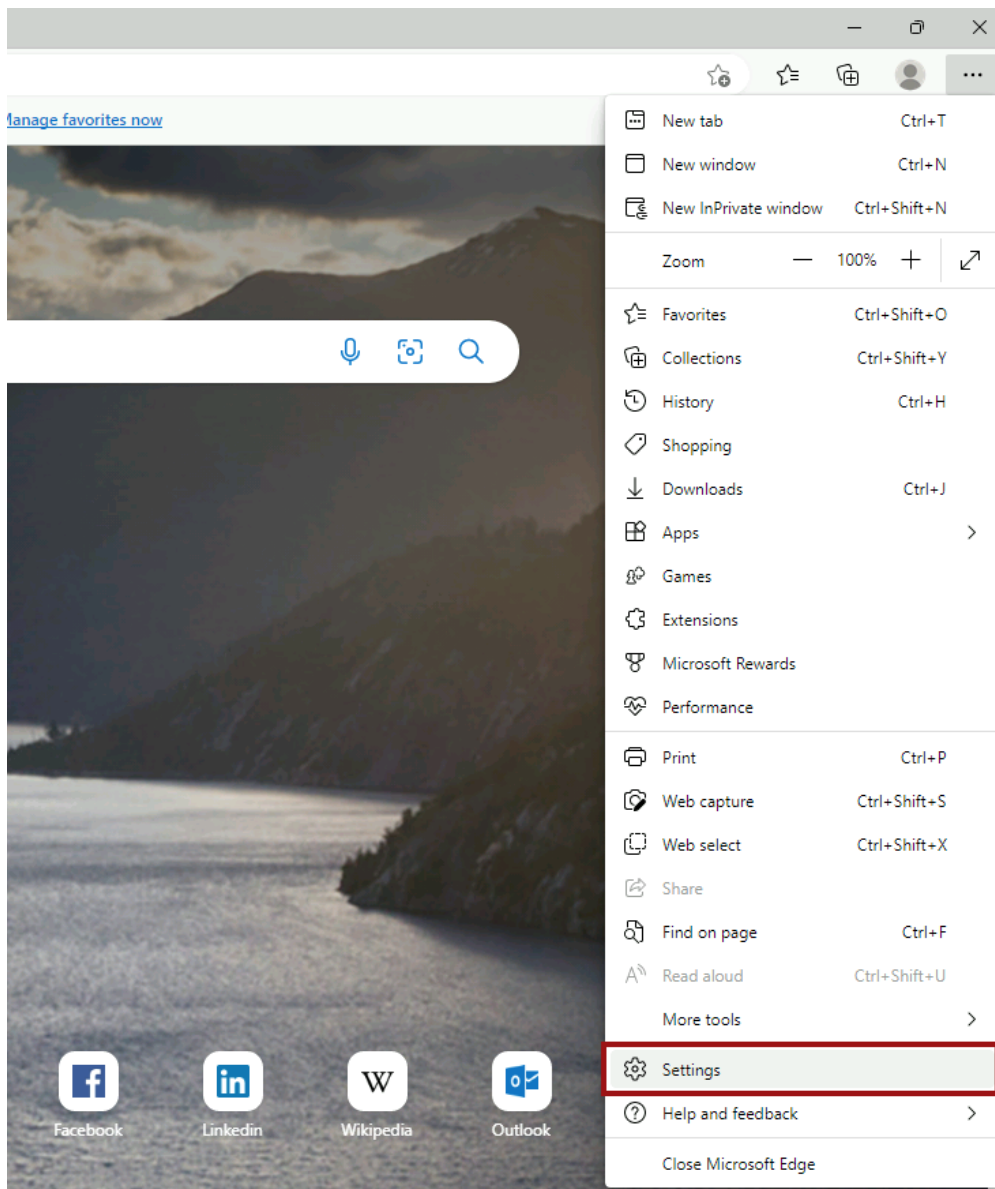


Configuring Microsoft Edge

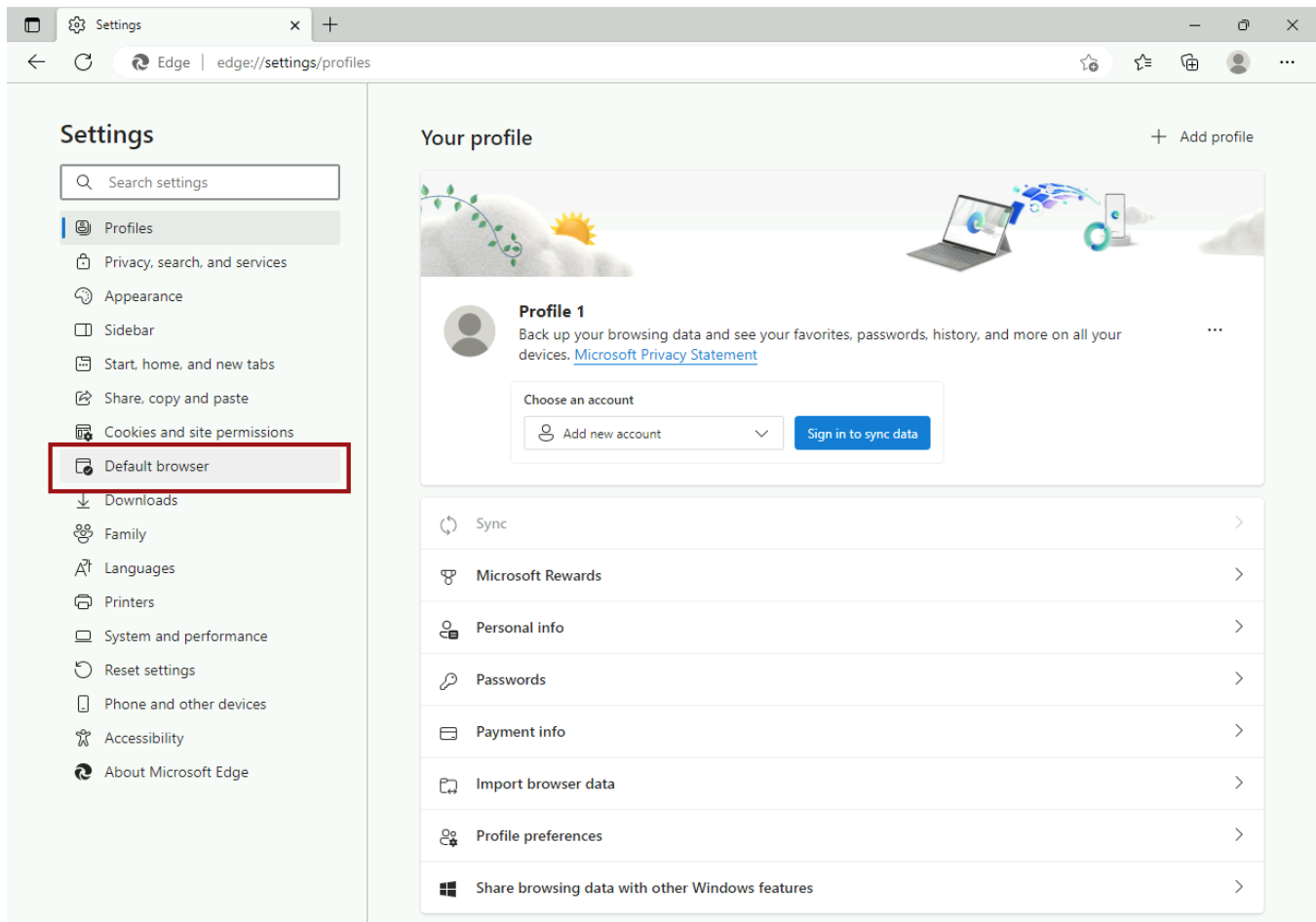
To configure **Microsoft Edge**, the first 11 steps are the same as **Internet Explorer 9, 10, and 11**. Then:

12. Open **Microsoft Edge**.

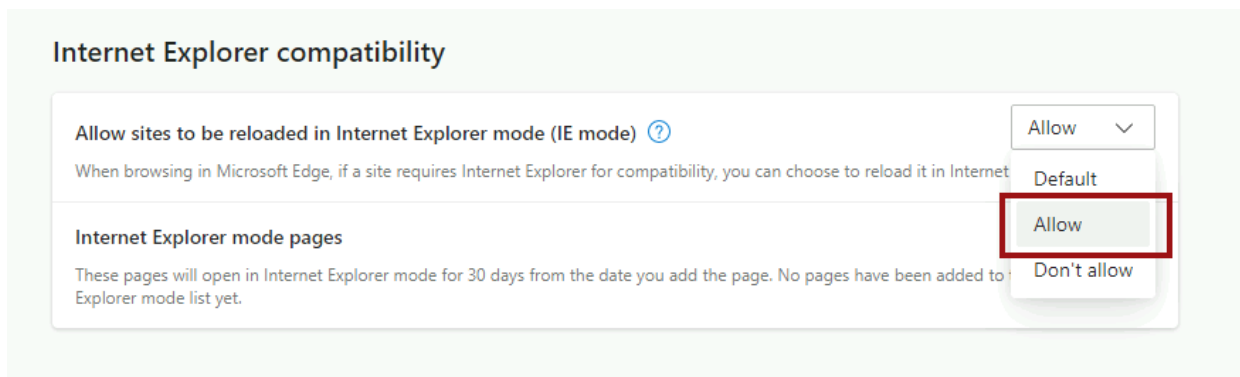
13. Press **Alt + F** to bring up the Edge menu and then click on **Settings**.



14. In the **Settings window**, click on **Default Browser** on the left pane.



15. Next, navigate to **Internet Explorer Mode** on the right and click on the drop-down menu to select **Allow**.



16. Restart the web browser.

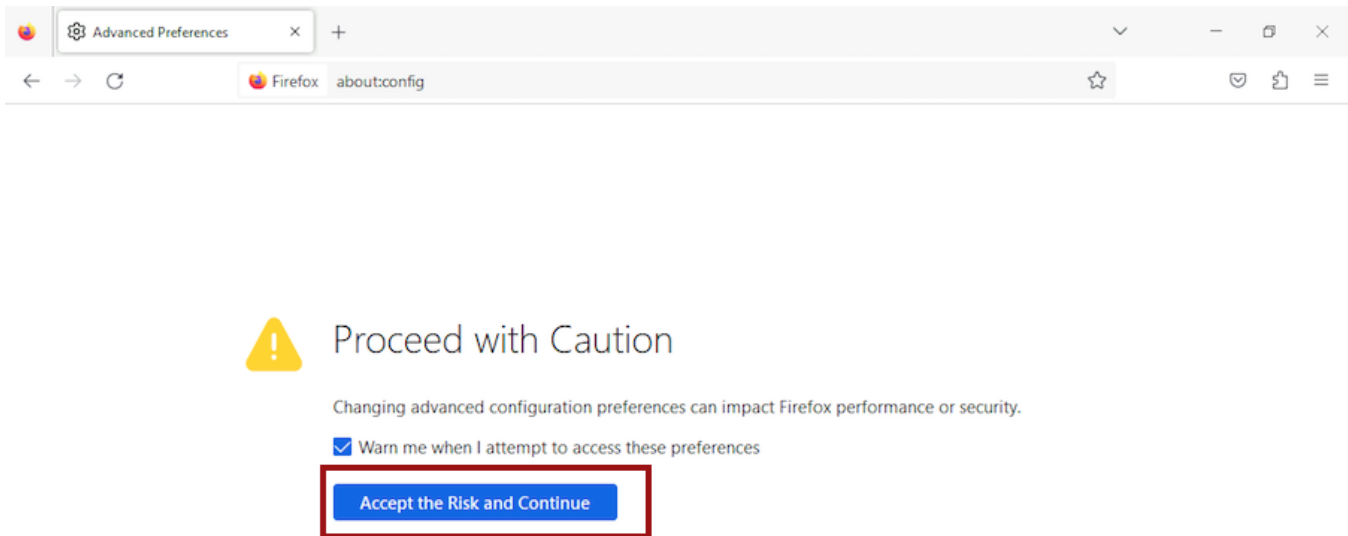
Configuring Google Chrome

To learn how to configure **Google Chrome**, visit the following link: <http://dev.chromium.org/developers/design-documents/http-authentication>.

Configuring Mozilla Firefox

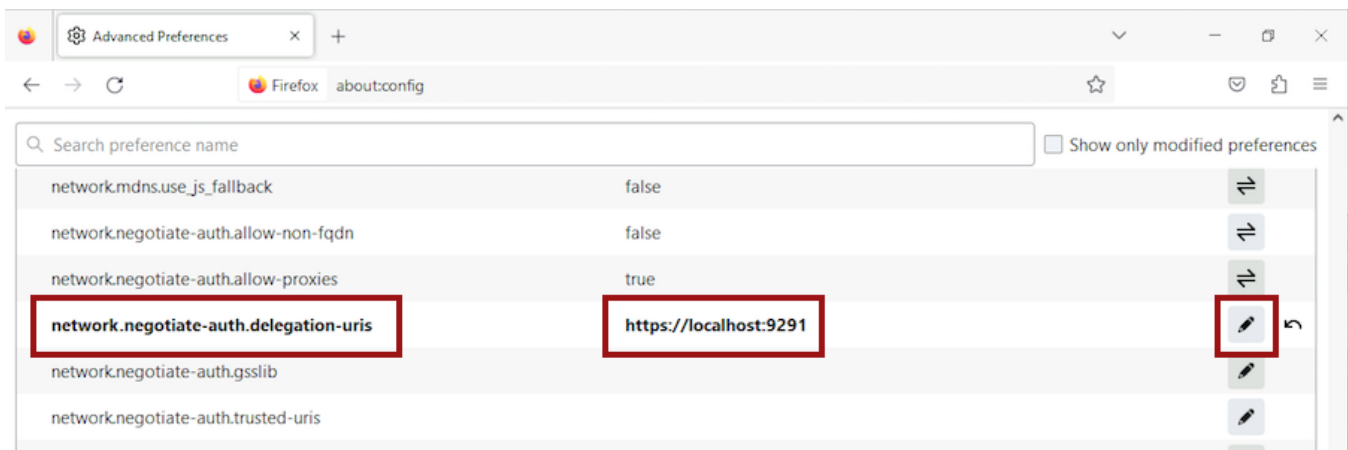
To configure the **Mozilla Firefox** web browser, follow these steps:

1. Open **Mozilla Firefox**, type **about:config**, and hit the enter key.
2. Click **Accept the Risk and Continue**.

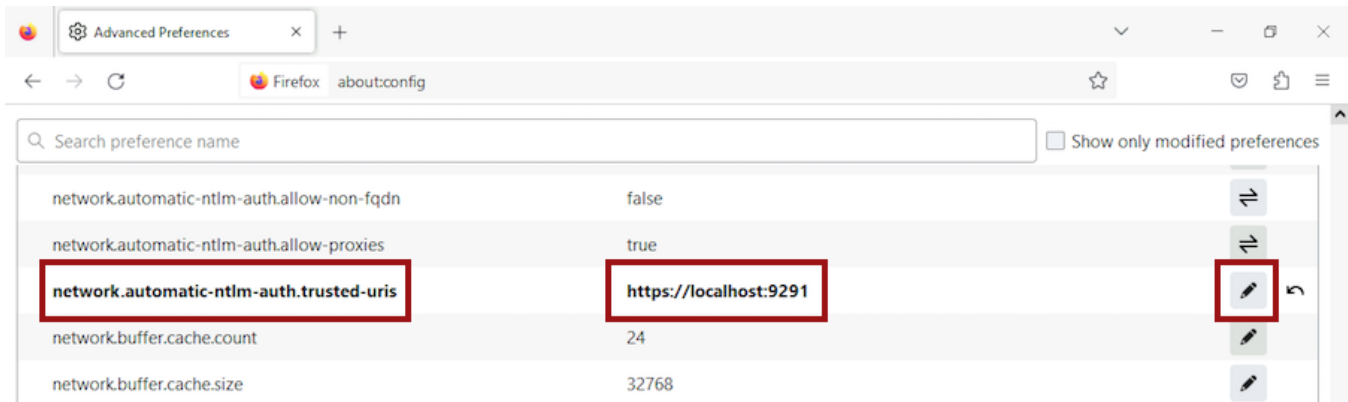


3. Click **Show All**.

4. Search for **network.negotiate-auth.delegation-uris**, click the pencil icon to edit, type `https://localhost:9291`, and hit enter to save changes.



5. Repeat with **network.automatic-ntlm-auth.trusted-uris**.



6. Close all instances of Firefox to make the changes effective. Launch the browser again and access the application.

