
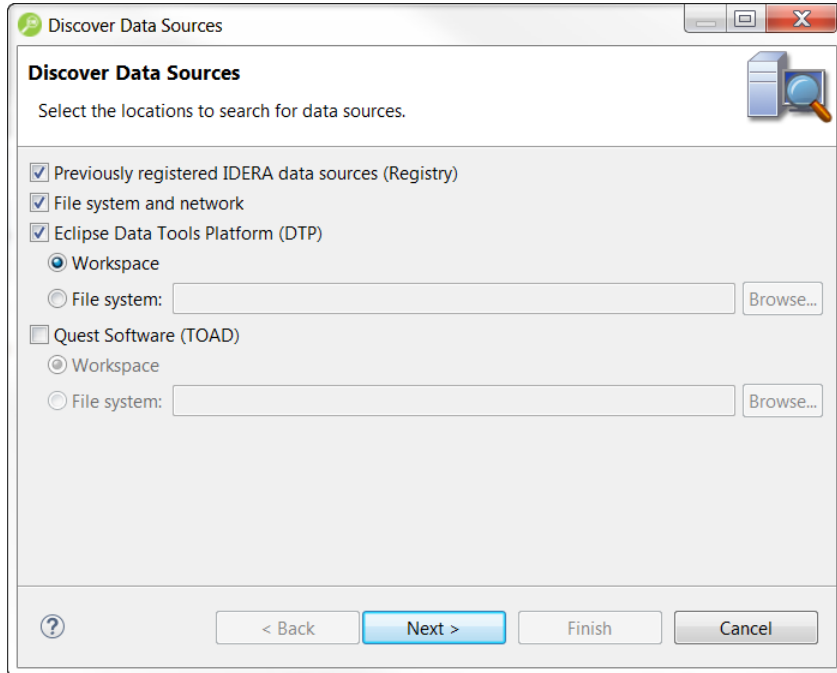


Register data sources

When SQL Query Tuner is started, it prompts you to discover data source catalogs that have been created by any previously installed IDERA products (DBArtisan, Rapid SQL, SQL Query Tuner), or other instances of SQL Query Tuner.

Additionally, the system scans your machine for the client software of all supported third-party DBMS platforms (TOAD, Eclipse Data Tools Platform, etc.). These data sources are automatically added to the data source catalog.

To manually initiate the scan later, click the Discover Data Sources icon  at the top of Data Source Explorer. The Discover Data Sources dialog appears.



1. Choose the type of data sources you want to scan for and click **Next**. The wizard automatically returns all data sources it finds on your machine based on the criteria you specified.
2. Choose the data sources you want to add to the SQL Query Tuner environment and click **Finish**. Data Source Explorer automatically populates with the new data source selections.

 To add data sources manually, right-click **Managed Data Sources** in the Data Source Explorer tree, select **New > Data Source**, and enter the connectivity parameters as prompted.

Once registered, the data source appears in the Data Source Explorer view. If you have created more than one workspace, they all share the same data source catalog.

Once a data source has been registered, the connection parameters are stored locally. In some cases, a user ID and password are required to connect to a registered data source. SQL Query Tuner can encrypt and save user IDs and passwords to connect automatically.

 In some cases, older versions of SQL Query Tuner and DB Artisan/Rapid SQL are not compatible with this version of SQL Query Tuner, and the methods listed above will not import these older data source catalogs. If you are experiencing difficulties, you can import the old data sources via the Windows registry by selecting **File > Import... > IDERA > Data Sources > Previously Registered IDERA Data Sources (Windows Registry)**.