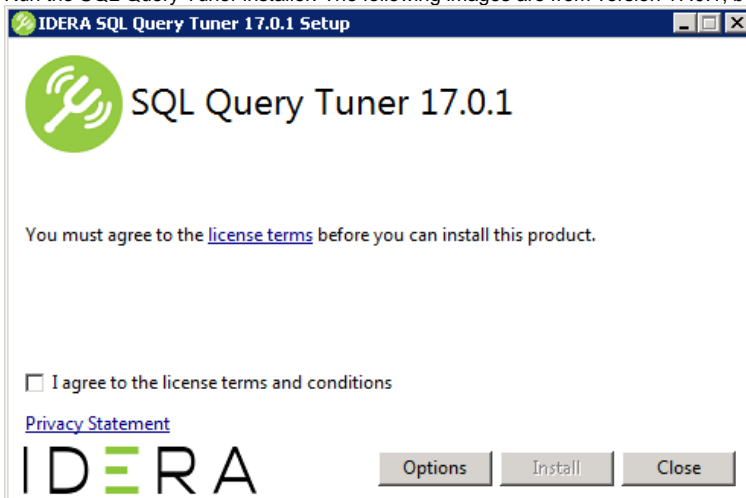


# Installing SQL Query Tuner

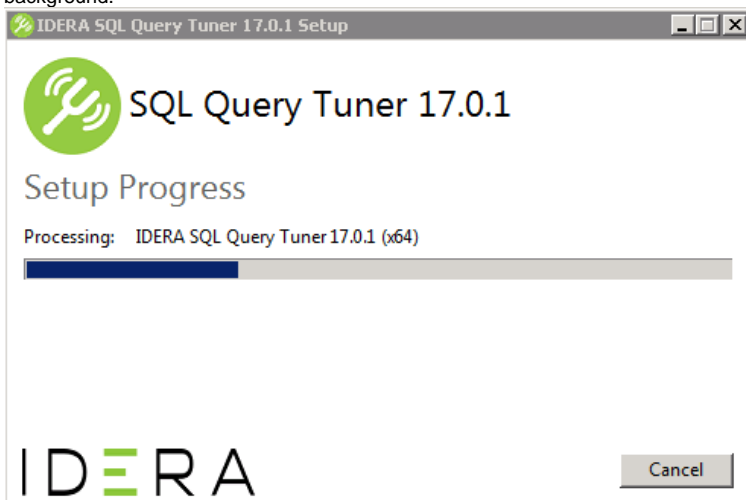
Read all of the installation steps before proceeding to make sure you have all the necessary information available.

1. Run the SQL Query Tuner installer. The following images are from version 17.0.1, but are still valid in the current release.

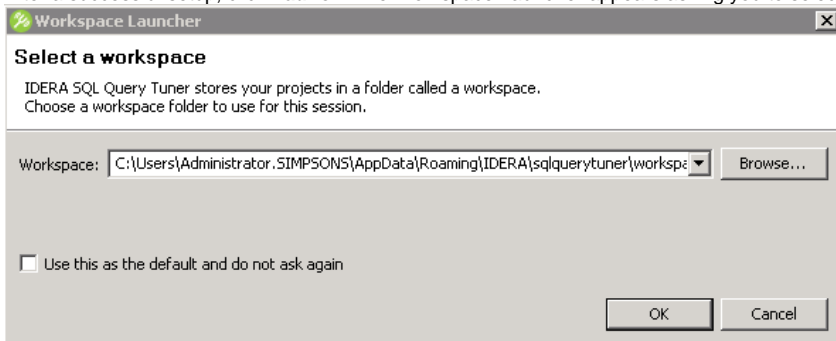


 If you need to change the default install location, click **Options**, and then browse for and select the appropriate location.

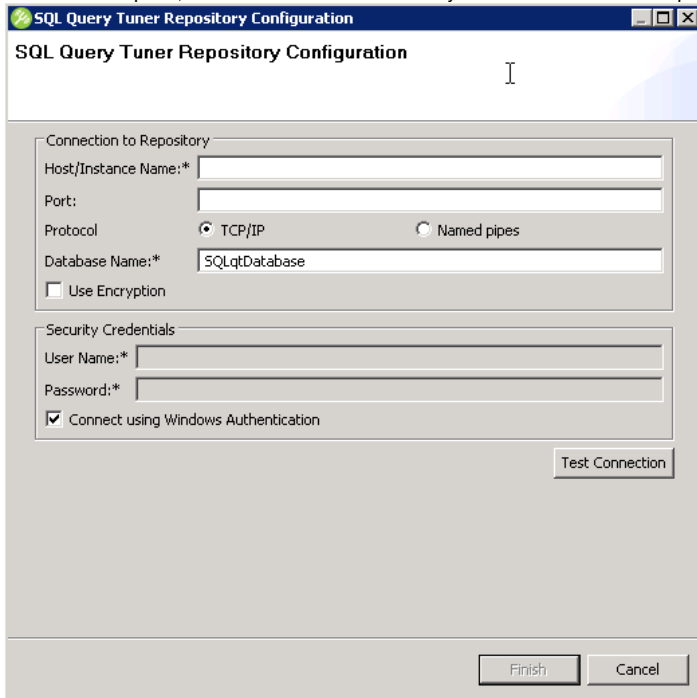
2. Agree to the license terms, and then click **Install**. The setup window displays a progress bar while completing the installation tasks in the background.



3. After a successful setup, click **Launch**. The Workspace Launcher appears asking you to select a workspace to store your projects for this session.



4. Select a workspace, and then click **OK**. SQL Query Tuner creates the workspace. The SQL Query Tuner Repository Configuration dialog appears.



The screenshot shows the 'SQL Query Tuner Repository Configuration' dialog box. It has a title bar with a green icon and standard window controls. The main area is divided into two sections: 'Connection to Repository' and 'Security Credentials'. The 'Connection to Repository' section contains fields for 'Host/Instance Name:\*', 'Port:', 'Protocol' (with radio buttons for 'TCP/IP' and 'Named pipes'), and 'Database Name:\*' (containing 'SQLiteDatabase'). There is also a checkbox for 'Use Encryption'. The 'Security Credentials' section contains fields for 'User Name:\*' and 'Password:\*', and a checked checkbox for 'Connect using Windows Authentication'. A 'Test Connection' button is located to the right of the 'Security Credentials' section. At the bottom of the dialog are 'Finish' and 'Cancel' buttons.

5. In the **Host/Instance Name** and **Port** fields, type the hostname of the machine that contains the Repository database.
6. In the Security Credentials area, enter the username and password used to access the Repository database.
7. *Optional.* Click **Test Connection** to check your database connection and to create or update any tables necessary.