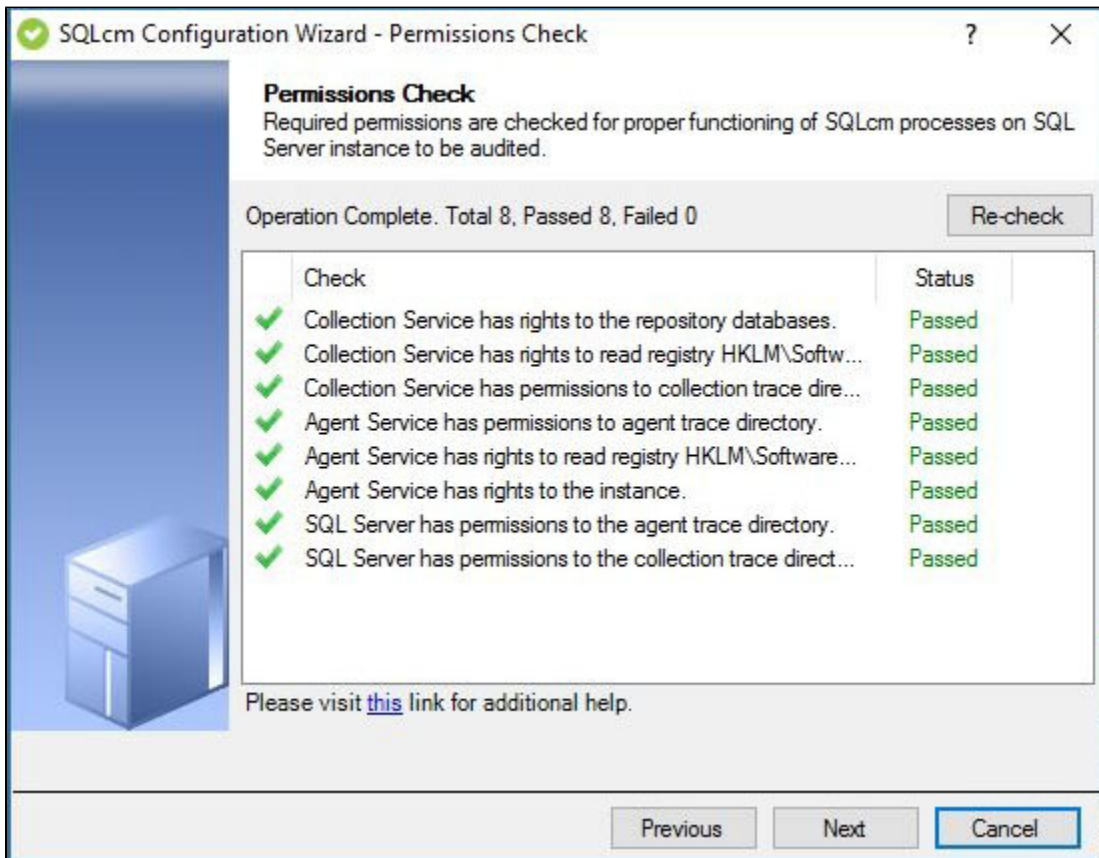


# Configuration wizard Apply Regulation - Permissions Check window

The Permissions Check window of the Configuration wizard displays the results of a check of the permissions required by IDERA SQL Compliance Manager on the SQL Server instance you want to monitor. This check runs automatically each time you register a new instance.



If the check fails, review the issue, make the required change to the target SQL Server instance, and then click **Re-check**. Once the check is complete, click **Next** to continue.

Required permissions include:

- Collection Service must have rights to the Repository databases
- Collection Service must have rights to read the registry at HKEY\_LOCAL\_MACHINE\Software\Idera\SQLcompliance
- Collection Service must have permissions to the collection trace directory
- Agent Service must have permissions to the agent trace directory
- Agent Service must have rights to read the registry at HKEY\_LOCAL\_MACHINE\Software\Idera\SQLcompliance
- Agent Service must have rights to the SQL Server instance
- SQL Server must have permissions to the agent trace directory
- SQL Server must have permissions to the collection trace directory



You can make changes to the registry at HKEY\_LOCAL\_MACHINE\Software\Idera\SQLcompliance to update permissions for your services. for more information about the registry key, see [Manage the registry key](#).



To successfully run and pass the Permissions Check, make sure you are logged in as one of the following users while registering an instance:

- SQL Compliance Agent Service User
- SQL Server Service User
- Current Logged-in User

For more information, see SQL Compliance Manager [Permissions Requirements](#).

## Available actions

### Re-check

Allows you to re-check the required permissions after making an update to the target SQL Server instance in case the preliminary check fails.

## Available fields

### Progress

Displays an icon that shows whether the check is in progress, passed or failed.

### Check

Displays the list of permissions checked in this step.

### Status

Displays the current status of the associated check. All checks display **Waiting** until run.

[IDERA](#) | [Products](#) | [Purchase](#) | [Support](#) | [Community](#) | [Resources](#) | [About Us](#) | [Legal](#)