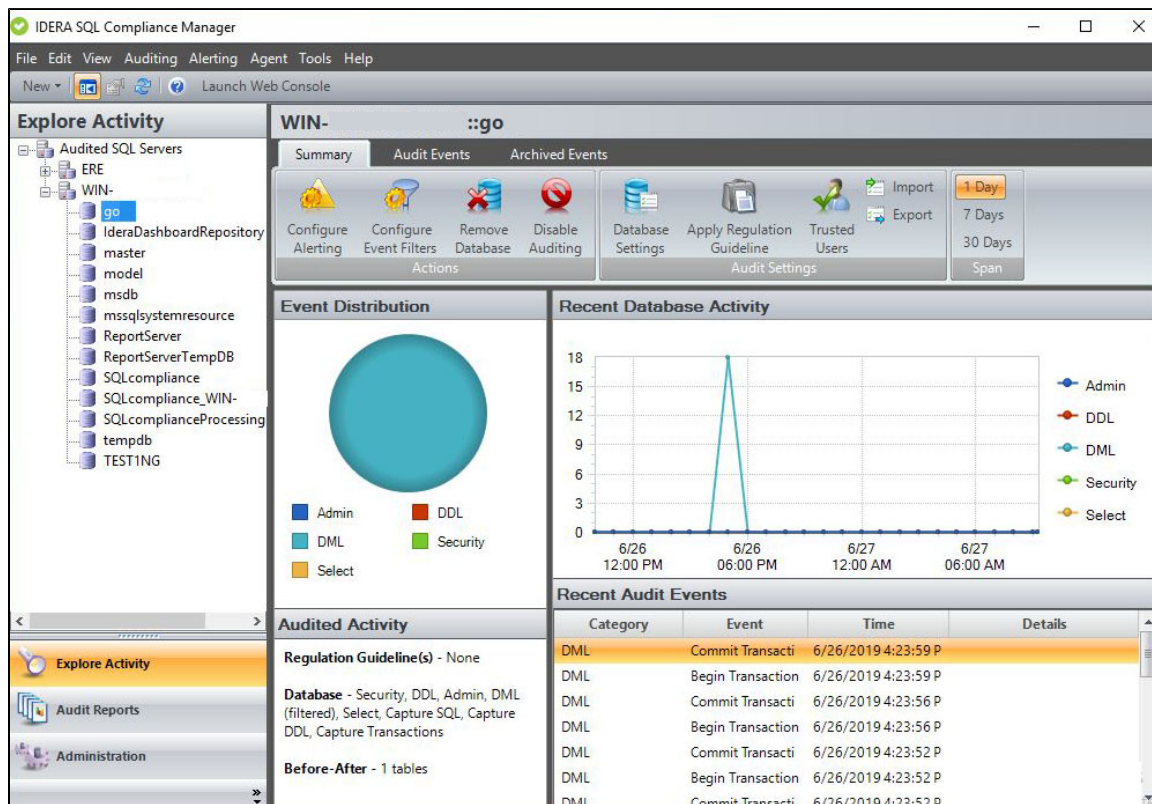


# Explore Activity - Database View

The Explore Activity Database view allows you to view the status of audit activity for a particular database hosted by the selected SQL Server instance. View the Summary tab for an overview of the recent activity performed on the selected database, or use the Audit Events tab to analyze the collected database events. You can also visit the Archived Events tab to view your archived databases.



For more information visit the different tabs of the Explore Activity Database view below:

- Explore Activity Database view - Summary tab
- Explore Activity Database view - Audit Events tab
- Explore Activity Database view - Archived Events tab