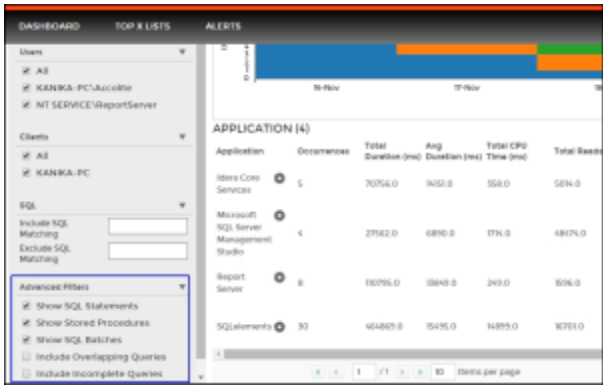


Advanced filters of the Main Query view

Advanced filter options allow you to determine the precise Query Monitor data that is displayed. You can find the advanced filter options at the left side of the Main Query view. Click image to view full size.



The Advanced Filters include:

Show SQL Statements

Includes queries that are SQL Statements. This filter is enabled by default.

Show Stored Procedures

Includes queries that are Stored Procedure calls. This filter is enabled by default.

Show SQL Batches

Includes queries that are SQL batches. This filter is enabled by default.

Include Overlapping Queries

Includes queries whose total period of execution overlaps with the selected time period. This filter is disabled by default.

Include Incomplete Queries

Includes queries whose total period of execution exceeds the selected time period (i.e. query information is incomplete). This filter is disabled by default.

SQL **Diagnostic Manager** identifies and resolves SQL Server performance problems before they happen. [Learn more](#) > >

Idera Website	Products	Purchase	Support	Community	About Us	Resources	Legal
-------------------------------	--------------------------	--------------------------	-------------------------	---------------------------	--------------------------	---------------------------	-----------------------