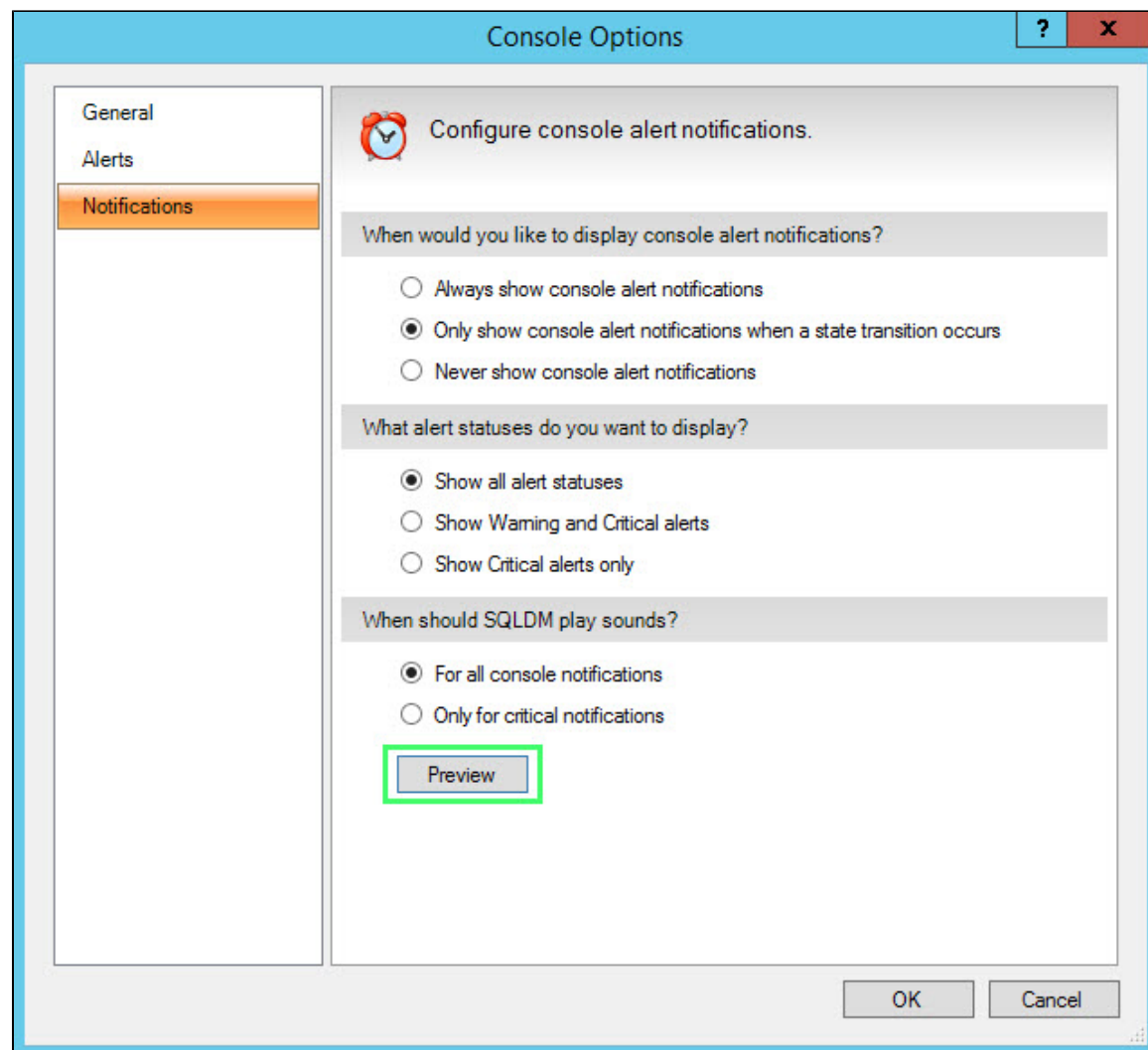


Configure notification settings

The Notifications tab of the Console Options window allows you to configure when and how the SQL Diagnostic Manager Console displays alert notifications. When you select an option to show notifications, SQL Diagnostic Manager displays a pop-up notification in your task bar each time it reaches a threshold.

To see an example of a console alert, click **Preview**, and the alert pop-up appears as shown in the following image.



Access the Console Options window Notifications tab

You can open the Notifications tab of the Console Options window from the SQL Diagnostic Manager Console by selecting **Tools > Console Options**, and then selecting the Notifications tab.

Selecting visual notifications

SQL Diagnostic Manager allows you to select when and for which alert states you receive alert notifications. You can select from the following options regarding when you want SQL Diagnostic Manager to display notifications:

Always show console alert notifications

Provides alert notifications occur after every refresh.

Only show console alert notifications when a state transition occurs

Limits the alert notifications you receive on refreshes to only those that change states.

Never show console alert notifications

Prevents the occurrence of all console notifications, but you continue to receive all email alerts. This setting is dependent upon your particular needs and you can modify the alert at any point. If you receive too many notifications, consider limiting notifications to occur only after an alert state transition. However, if you monitor a problematic SQL Server and want to know when a threshold is met, consider monitoring all alert states.

Select from the following options regarding which alert statuses trigger notifications:

Show all alert statuses

Display notifications for all alert state changes.

Show Warning and Critical alerts

Display notifications only when an event triggers a Warning or Critical alert.

Show Critical alerts only

Display notifications only when an event triggers a Critical alert.

Selecting audible notifications

The options in the When should SQL Diagnostic Manager play sounds section allow you to toggle whether you want to hear an audible notification along with the alert in SQL Diagnostic Manager whenever an event triggers a critical alert. The default **For all console notifications** option helps to let you know of any notification within SQL Diagnostic Manager. Select **Only for critical notifications** and SQL Diagnostic Manager plays the audible notification only when an event triggers a critical alert.

SQL **Diagnostic Manager** identifies and resolves SQL Server performance problems before they happen. [Learn more > >](#)

IDERA Website	Products	Purchase	Support	Community	About Us	Resources	Legal
-------------------------------	--------------------------	--------------------------	-------------------------	---------------------------	--------------------------	---------------------------	-----------------------