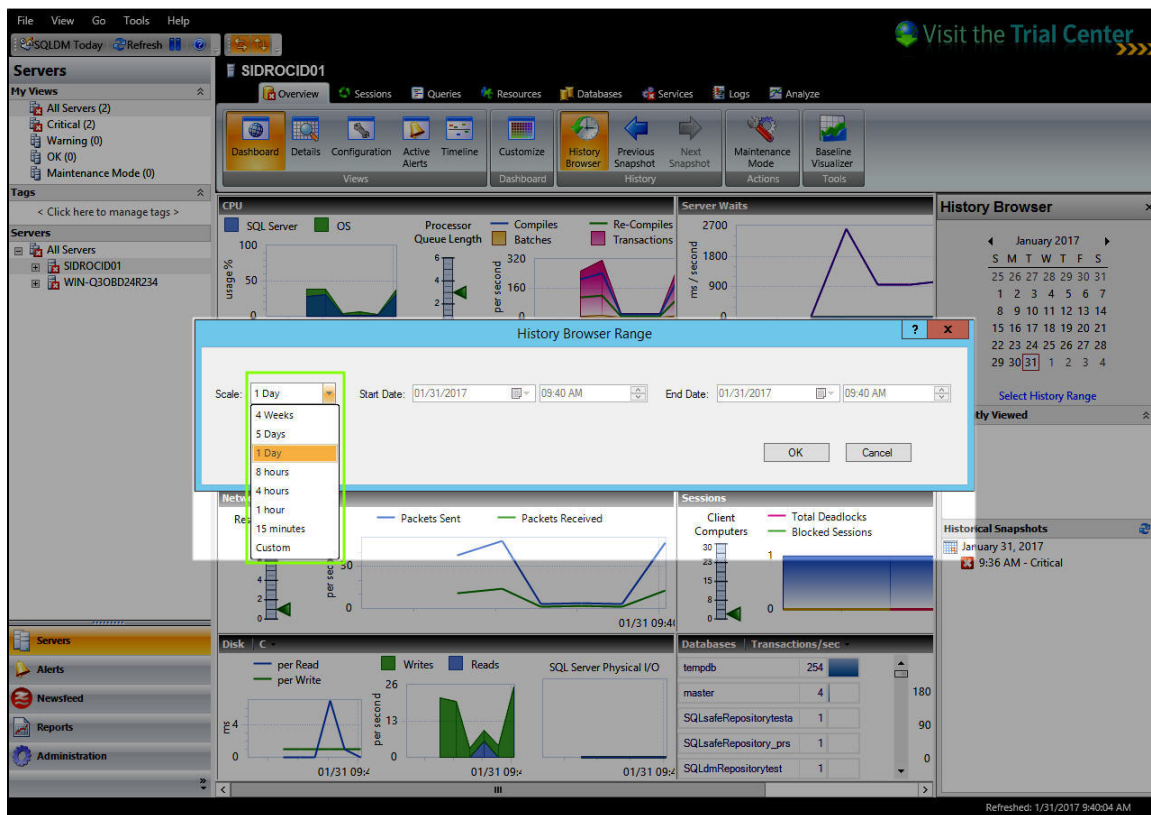


History Browser Range

The History Range Control is located at the top of the Web Console and in the option History Browser in the Desktop Console. Both can be modified and be designated a specific start time and date as well as current snapshot.

Follow these steps to configure the History Range of your SQLDM Desktop Console and web console:

- In the desktop console, click **History Browser**.
- Under the calendar select the option **Select History Range**.
- The History Browser Range window opens.
- Select the range from the drop down list scale, these options are the following: 4 Weeks, 5 Days, 1 Day, 5 hours, 8 hours, 4 hours, 1 hour, 15 minutes, and Custom.
- When selecting **Custom**, the user needs to select a Start Date/Time and End Date/Time.
- Click **OK**.



SQL Diagnostic Manager identifies and resolves SQL Server performance problems before they happen. [Learn more >](#)

IDERA Website	Products	Purchase	Support	Community	About Us	Resources	Legal
-------------------------------	--------------------------	--------------------------	-------------------------	---------------------------	--------------------------	---------------------------	-----------------------