

# How to install SQL Defrag Manager

This procedure guides you through a typical install of SQL Defrag Manager. This process installs all SQL Defrag Manager components on one system. Use this procedure for first-time installations and evaluation installations.

Before you begin the installation process, ensure you review:

- [Product components and architecture](#)
- [Product requirements](#)

Check Ports Availability

Make sure SQL Defrag Manager service can use port TCP 5280 for listening.

Start the setup program

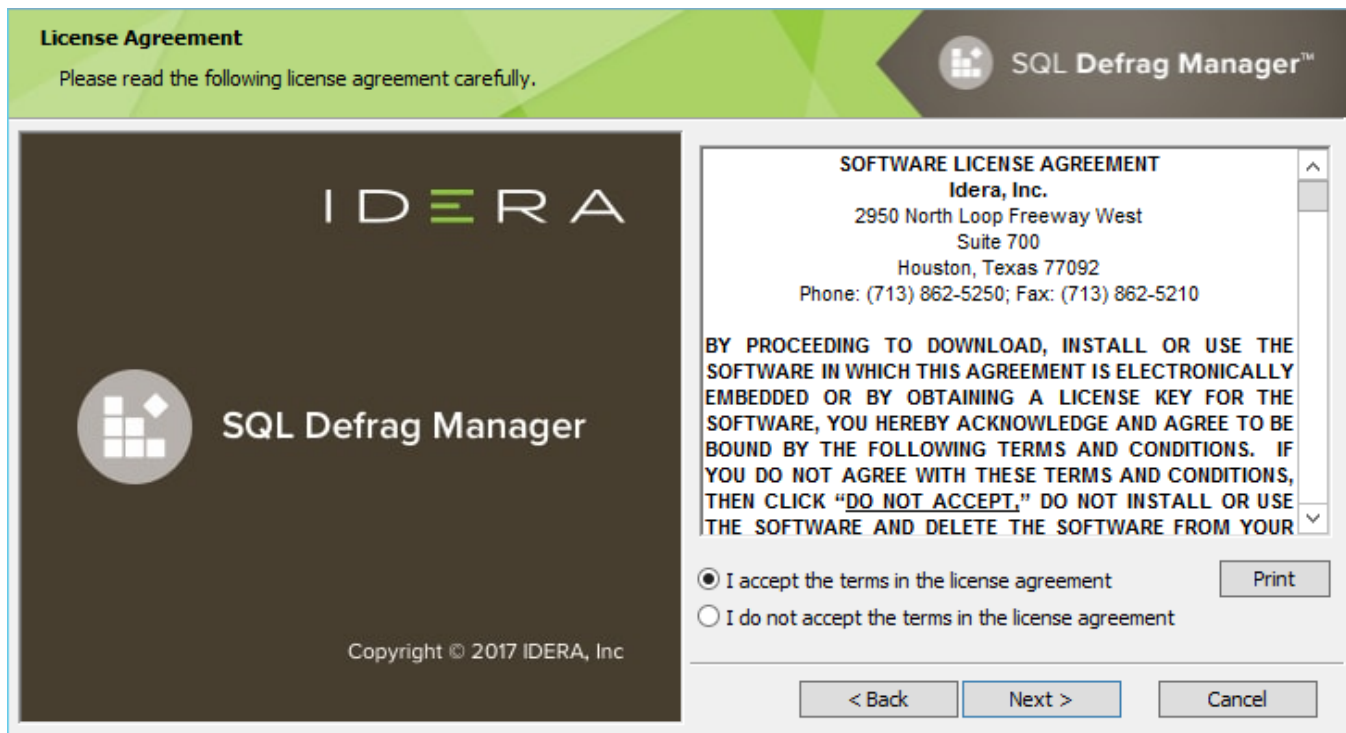
Before you install IDERA SQL Defrag Manager, be sure to have:

- A system that meets or exceeds the [product requirements](#).
- A local administrator account on the system you are installing the product.

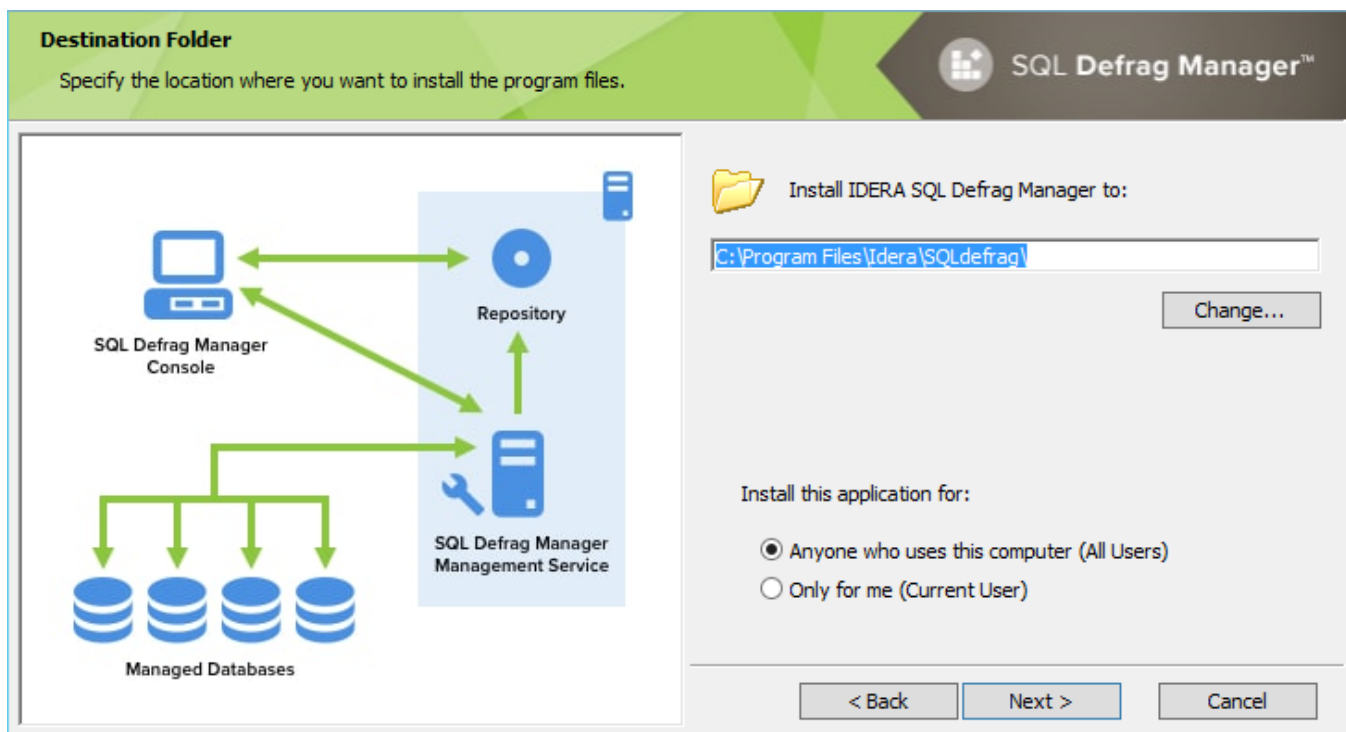
1. On the IDERA SQL Defrag Manager setup window, click **Next** to continue with the installation.



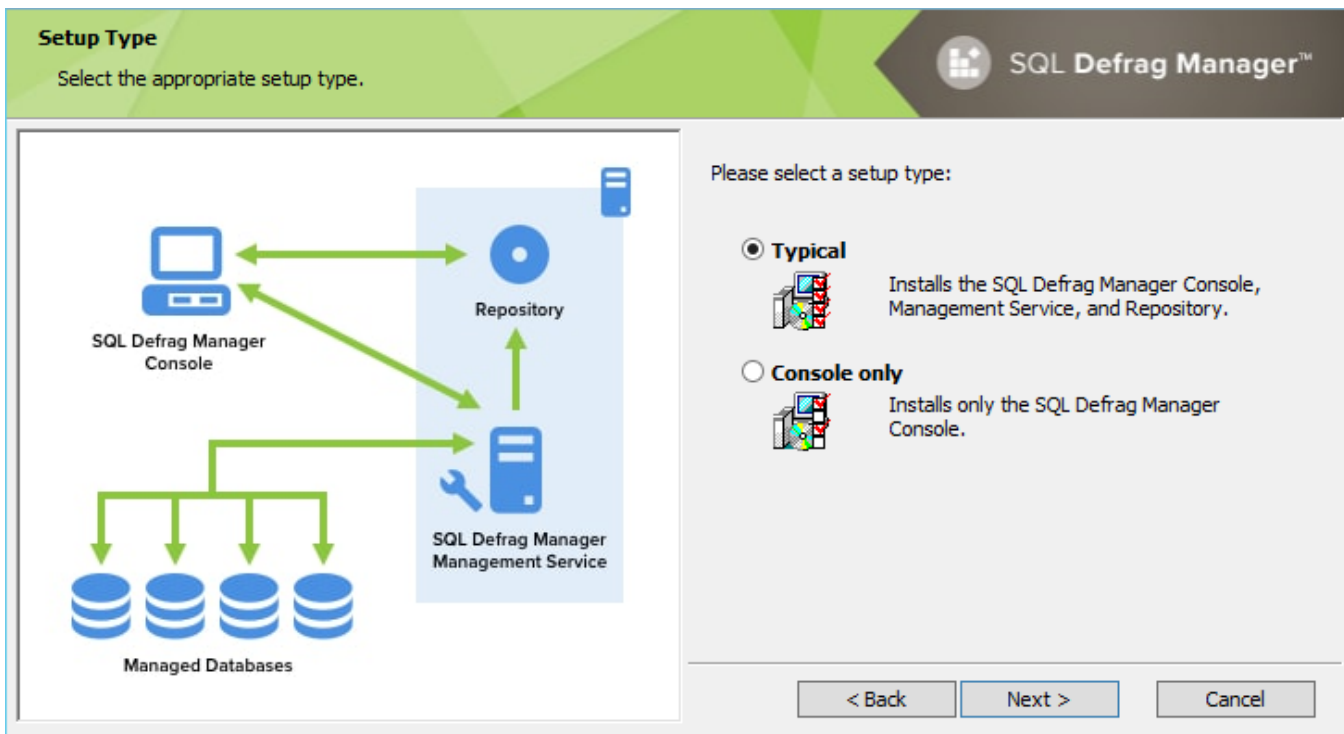
2. Read the License Agreement. If you agree, click **I accept the Terms and Conditions** and then click **Next**.



3. To use the default installation settings, click **Next**. To use a different path, click **Change**.



4. Choose a setup type. For your first install, we recommend using the **Typical** setup. This type ensures that you install and configure all required IDERA SQL Defrag Manager components, so you can immediately begin using the product in your environment.



5. To select an instance for the SQL Defrag Manager Repository, type in the name of the instance or use the drop-down option to select an instance from the available local instances and click **Next**.

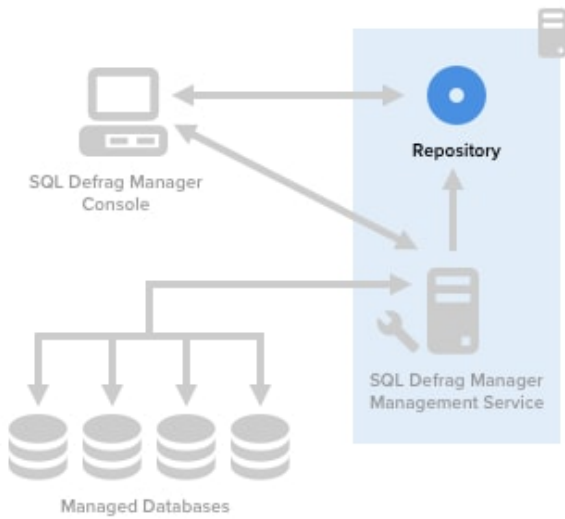
**i** The SQL Defrag Manager Repository stores all collected activity and defragmentation information, which you can then access in the SQL Defrag Manager Console. SQL Defrag Manager can connect to the selected SQL Server instance using the credentials of your current Windows login account or a SQL Server login. For your first install, we recommend using your current login account credentials.

#### To specify a SQL Server login:

- a. Select **Use Microsoft SQL Server authentication**.
- b. Specify the credentials of a login with sysadmin privileges on that instance, and then click **OK**.
- c. Click **Next**.

### Install the SQL Defrag Manager Repository

Specify the installation options for the SQL Defrag Manager Repository



Specify the SQL Server instance that will host the SQL Defrag Manager Repository. Type in the name of the instance in the field below or use the drop-down option to select an instance from the available local instances.

**SQL Server instance:**

(local) ▼

**Connection Credentials:**  
 You can use SQL Server authentication to create the Repository. By default, the Setup Wizard uses your Windows logon credentials.

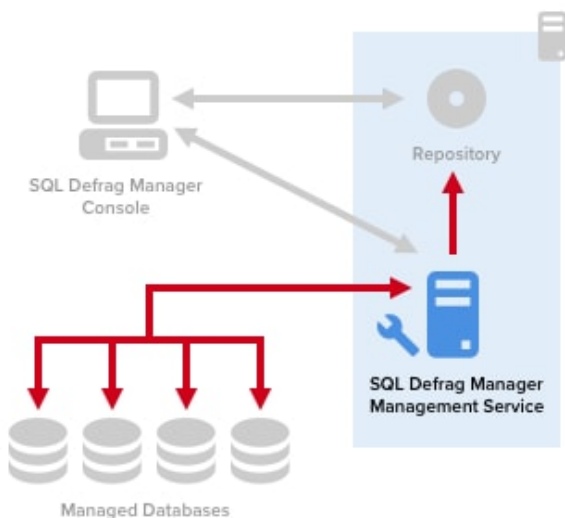
☐ Use Microsoft SQL Server Authentication Change

< Back   Next >   Cancel

6. The SQL Defrag Manager service uses a Windows account to connect to the SQL Defrag Manager Repository. For your first install, we recommend using local system account for the Management Service account. Type in the appropriate credentials in the requested format (Domain\Username and password) and click **Next**.

### Management Service Account

Specify the account the Management Service will run under.



The Management Service runs as the Windows credentials you specify. SQL Defrag Manager uses this account to connect to the SQL Defrag Manager Repository and all managed instances.

Specify the service account:

Domain\Username:

Password:

The Logon as a Service right will be granted to this account.

< Back   Next >   Cancel

7. Click **Install** to perform the installation, click **Back** to review your settings. Click **Finish** when the installation finishes.



[IDERA](#) | [Products](#) | [Purchase](#) | [Support](#) | [Community](#) | [Resources](#) | [About Us](#) | [Legal](#)