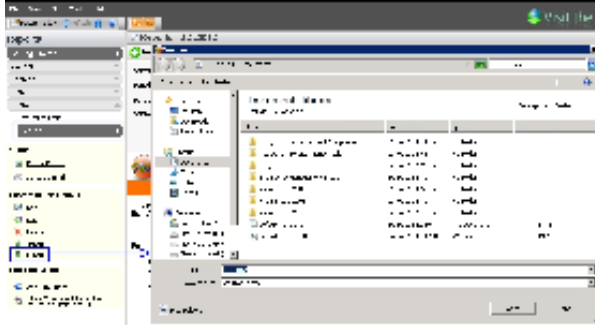


# Export a custom report

The Custom Reports Export Wizard allows you to export and share already created custom reports in the [Idera community site](#). Custom Reports can include any metric collected by SQL diagnostic manager.

## To export a custom report:

1. Select **Reports** in the navigation pane.
2. Once in the Reports view, click **Custom** in the Navigation pane.
3. Select the custom report you wish to export from the list and click **Export** in the Custom Report Options. Click image to view full size.



4. In the **Save As** dialog box, indicate in which folder you want to save the custom report XML file.
5. In the "Selected custom report exported successfully" notification, click **OK**.



## Import a custom report

For instructions on importing a custom report, see [Import a custom report](#).

SQL **Diagnostic Manager** identifies and resolves SQL Server performance problems before they happen. [Learn more >](#)

<a href="#">Idera Website</a>	<a href="#">Products</a>	<a href="#">Purchase</a>	<a href="#">Support</a>	<a href="#">Community</a>	<a href="#">About Us</a>	<a href="#">Resources</a>	<a href="#">Legal</a>
-------------------------------	--------------------------	--------------------------	-------------------------	---------------------------	--------------------------	---------------------------	-----------------------