

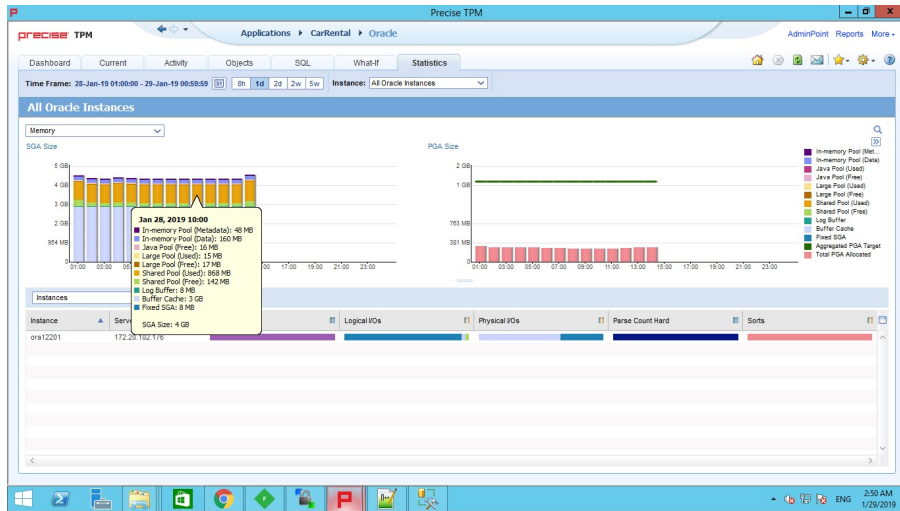
Oracle 12c additional metrics

Precise 10.0 now supports certain additional metrics for Oracle 12c databases, such as In-Memory support related information, UNDO tablespaces, activity with respect to each pluggable database, inc.

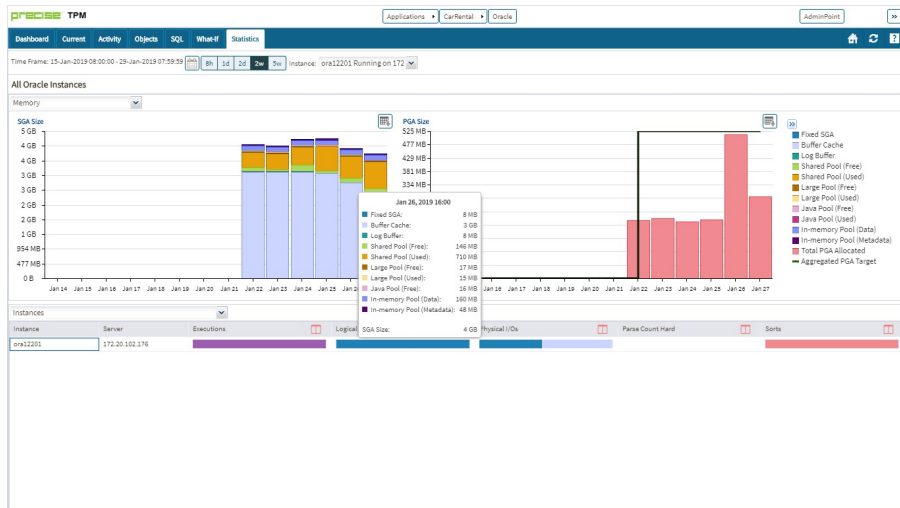
Statistics tab In-Memory area support

Precise 10.0 includes support to show the size of In-Memory pools.

Previous Precise versions



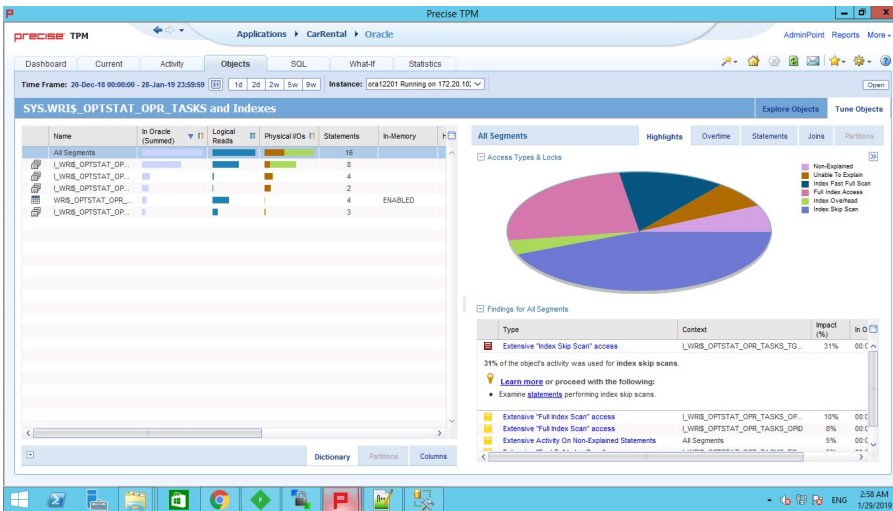
Precise 10.0



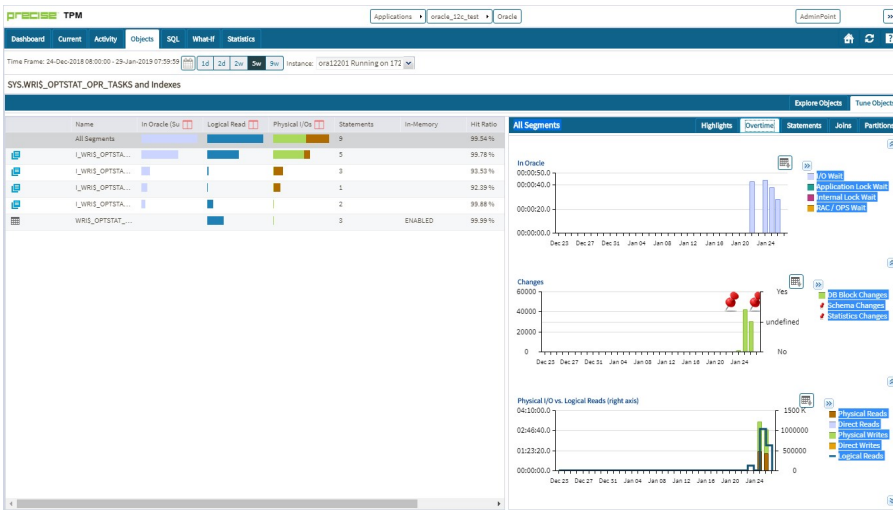
Objects tab In-Memory flag

In the Objects tab, when an **Active Object** is in context, we show for tables and indexes whether it is in the **In-Memory Area**.

Previous Precise versions



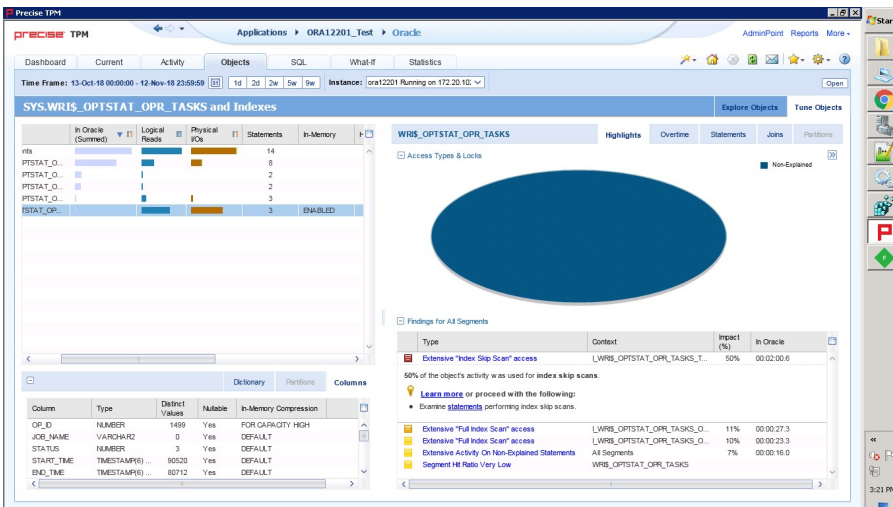
Precise 10.0



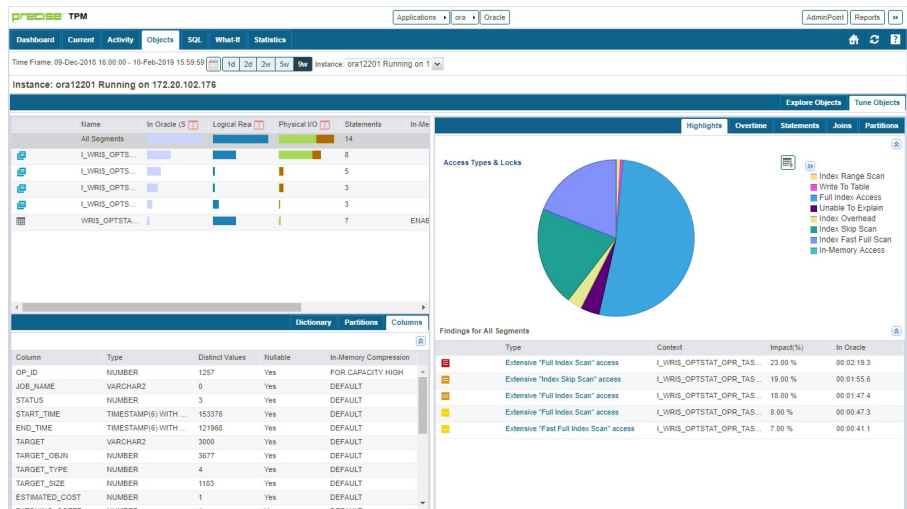
In-Memory information for Columns of an object

the In-Memory Compression value is shown for columns of the **Active Object** in the context.

Previous Precise versions



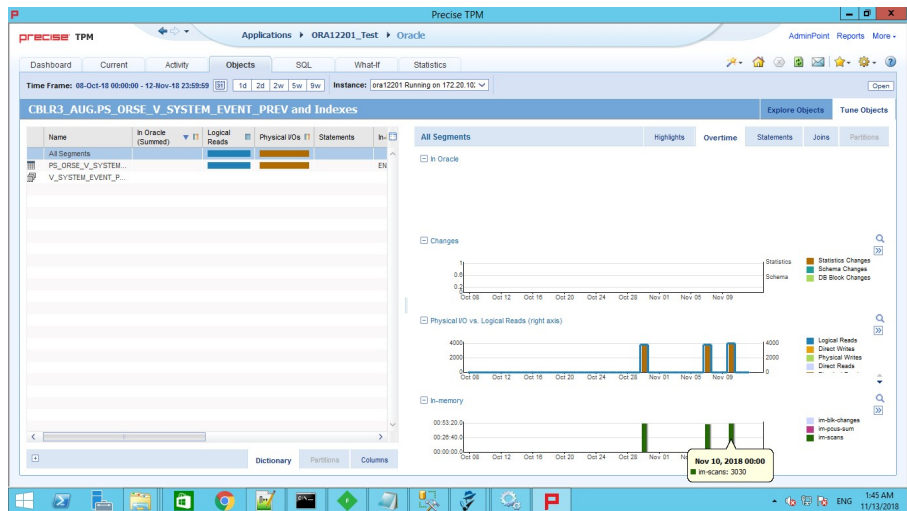
Precise 10.0



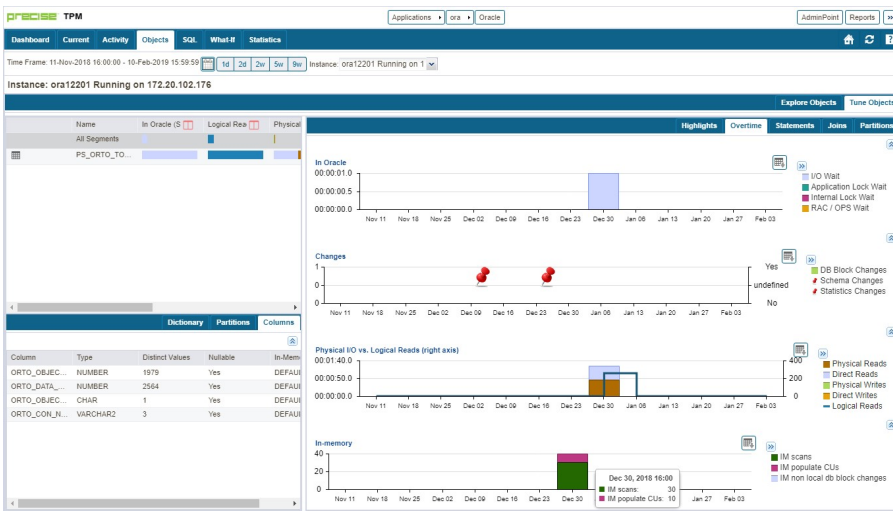
In-Memory usage graph

for the object in the left top table, we now show the In-Memory usage chart in the Overtime tab for the time frame selected.

Previous Precise versions



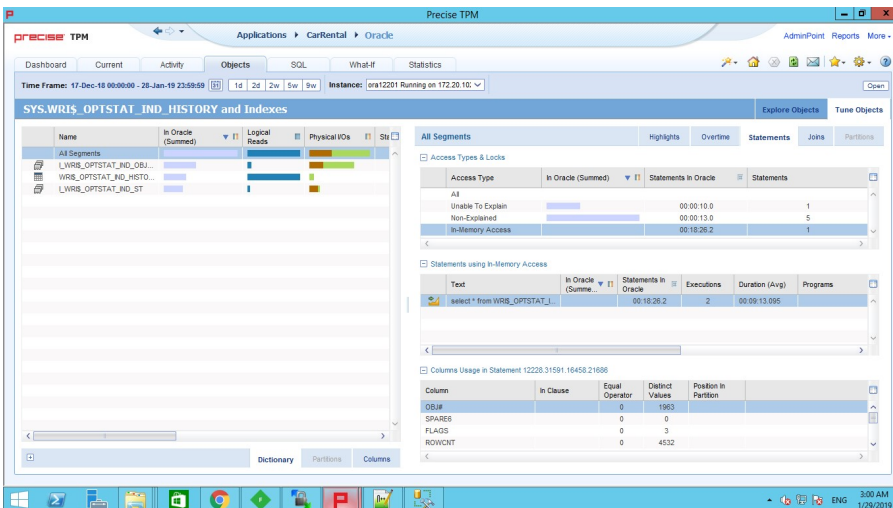
Precise 10.0



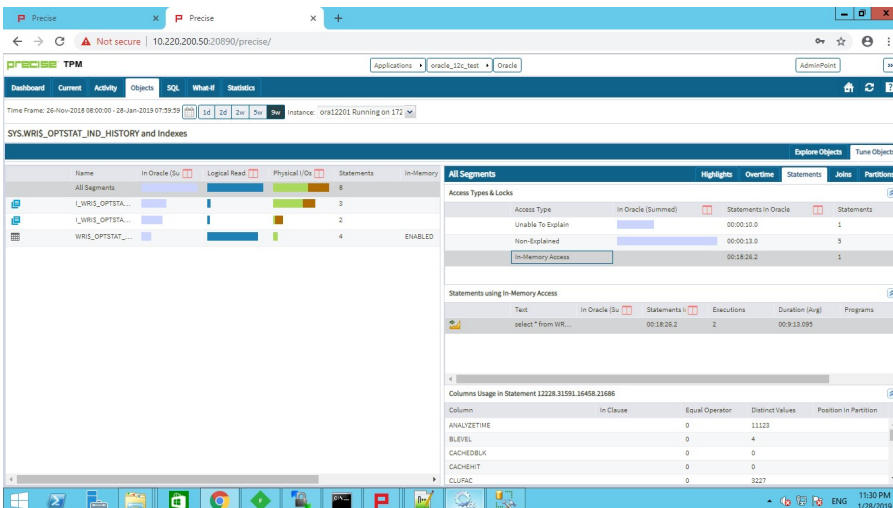
In-Memory Access Type

For the object in the left top table, we now show the In-Memory Access Type and statements using the **In-Memory Access Type** in the Statements tab for the time frame selected.

Previous Precise versions



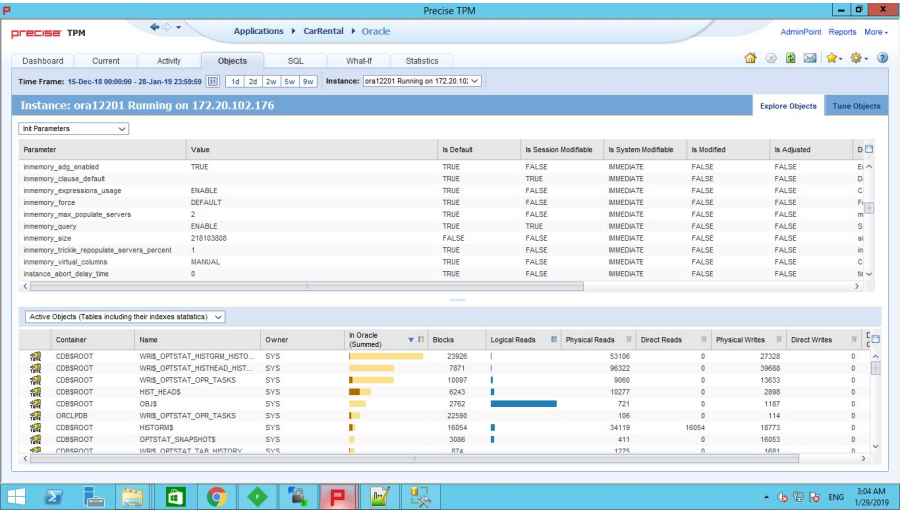
Precise 10.0



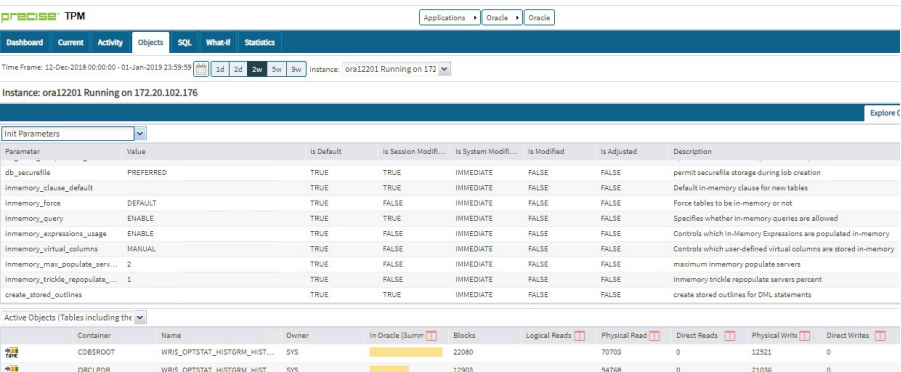
Init parameters related to In-Memory area support in Oracle 12c

In-Memory parameters are shown in the Init parameters list.

Previous Precise versions



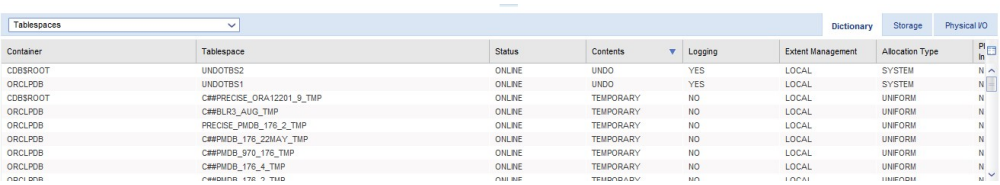
Precise 10.0



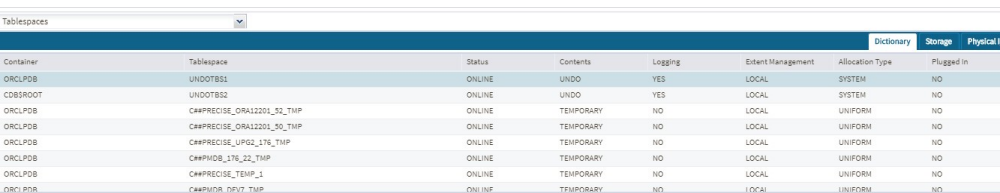
Undo tablespaces for each PDB in 12c R2

Oracle 12c R2 includes the capability to have a Local UNDO tablespaces for each PDB. In the Objects workspace, for the **Tablespaces** associate options, the **UNDO** tablespace appears for each.

Previous Precise versions



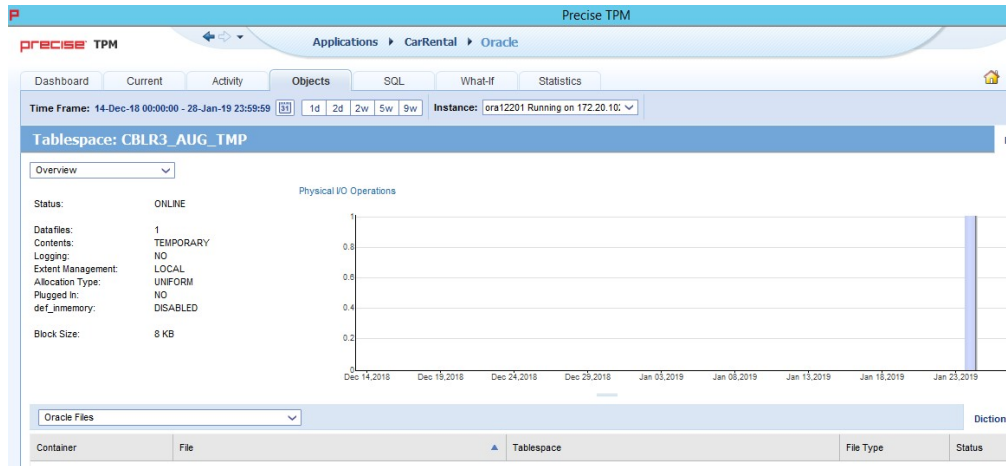
Precise 10.0



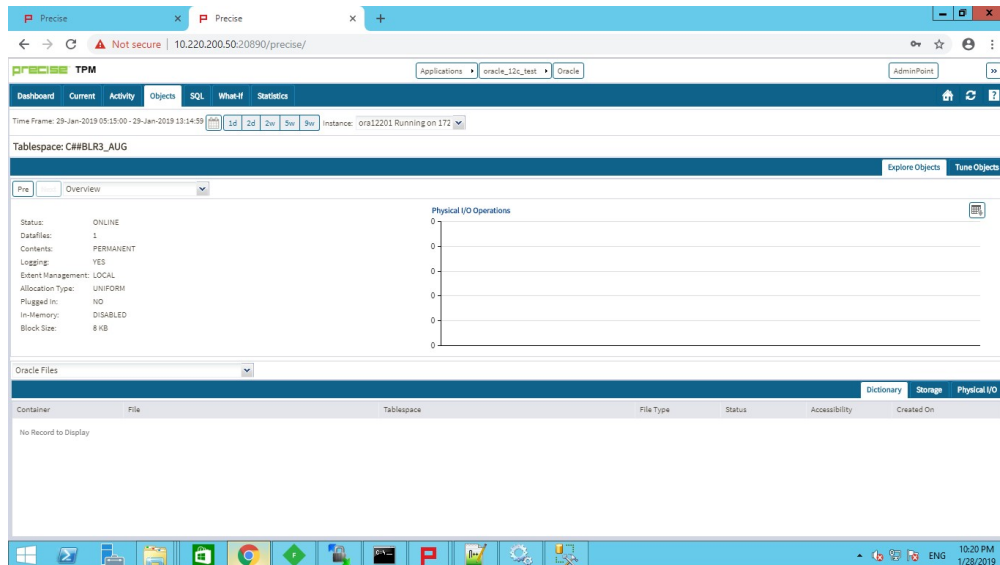
In-Memory for tablespaces

At the tablespace context of the Objects tab, the **In-Memory** flag for the tablespace in context is displayed.

Previous Precise versions



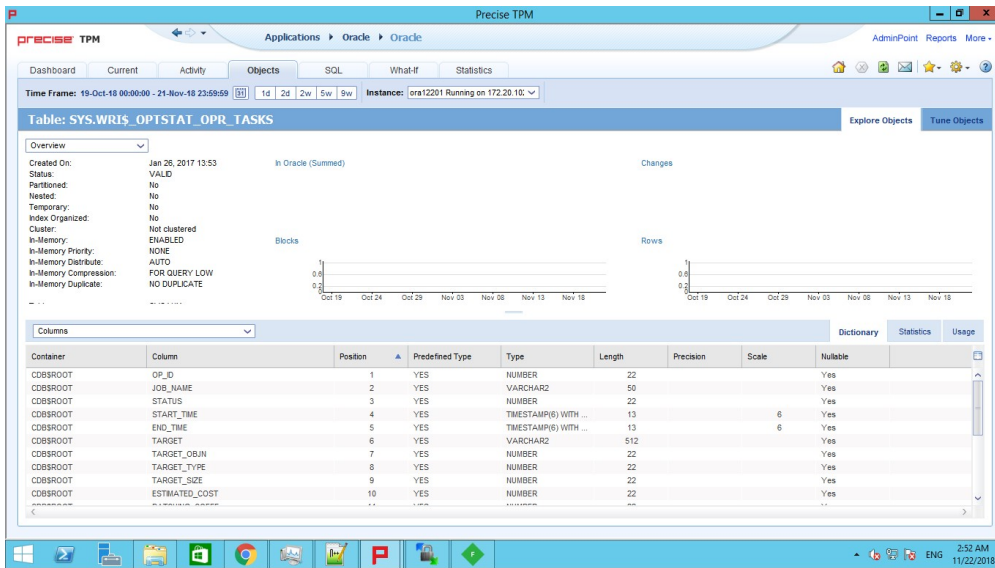
Precise 10.0



In-Memory details for the tables

In the Oracle Objects tab, at the Table context, In-Memory details related to the table in context appear.

Previous Precise versions



Precise 10.0

