

# Configure your virtual machine connections

The VM Configuration window allows you to associate your monitored virtual SQL Server instances with the virtualization host server that manages your VMs and the VM on which the monitored SQL Server instance is running.

Virtual machines appearing in the list are based on the permissions for the user account typed into the **Virtualization Host Configuration** dialog box. To view a specific VM, you must have the View permission on all parent folders.



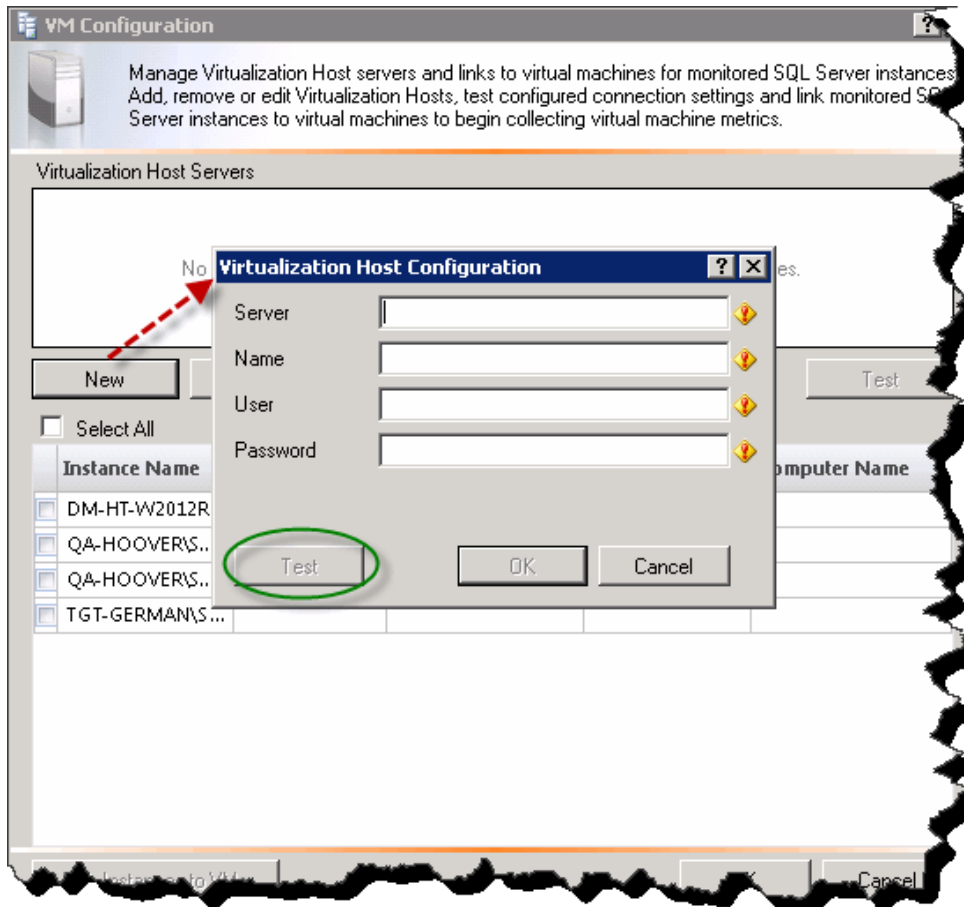
Remember to renew your link after changing the name of a virtual machine. Once the name change is complete, simply open the VM Configuration window and wait until after SQL Diagnostic Manager is done contacting the vCenter server or Hyper-V Host server to get a list of your VM names. Note that your updated VM name already appears in the list. Click **OK** to save the new name to the list of VMs. If you do not update the name, this action occurs again the next time you access the VM Configuration window.

## Access the VM Configuration window

To open the VM Configuration window, select **Tools > VM Configuration**, or click **VM Configuration** from the Manage Servers window. You can also access this window from the Virtualization tab of the Server Properties window by clicking the **VM Configuration** button.

## Add a host server

SQL Diagnostic Manager allows you to add a new host server through the VM Configuration window. Click **New**, and then complete the access information for the server. When you complete all the available fields, SQL Diagnostic Manager allows you to verify connectivity with this server. Click **Test** to make sure you typed the correct access credentials. Click **OK** after a successful test.



### Hyper-V and metrics collection

See [Hyper-V user requirements](#) for information on how to successfully collect Hyper-V host and VM metrics.

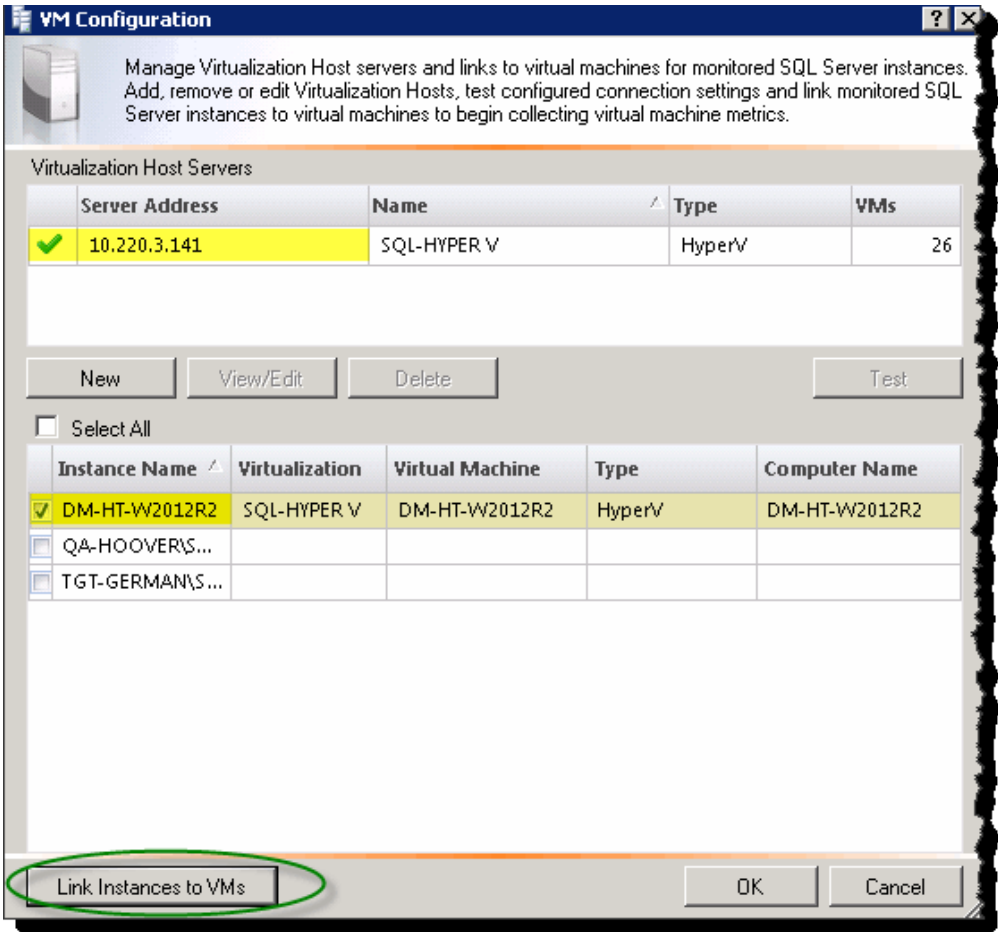
## Verify your connection to the host server

You can test the connection to your listed host servers by selecting the appropriate server from the list, and then clicking **Test**. SQL Diagnostic Manager displays an icon with your current connection status. If the connection fails, click **View/Edit** and verify your connection details. Make the necessary changes to access your host server, click **Test**, and then click **OK** to save your changes after a successful test.

**Associate a monitored SQL Server instance to a VM**

Once you add your SQL Server instances to SQL Diagnostic Manager for monitoring, you must associate them with their host server and virtual machine.

To associate a monitored SQL Server instance to a virtual machine:



- 1. Verify that the instance you want to associate to the host appears in the list.
- 2. Click the **Virtualization** column for the appropriate virtual instance, and then select the associated host server from the drop-down list.
- 3. Click the **Virtual Machine** column, and then select the name of the virtual machine where this instance resides. SQL Diagnostic Manager populates this drop-down list based on the servers on the selected host server.
- 4. Click **Link Instances to VMs**.
- 5. Click **OK** to save your changes and close this window.

SQL **Diagnostic Manager** identifies and resolves SQL Server performance problems before they happen. [Learn more](#) > >

<a href="#">IDERA Website</a>	<a href="#">Products</a>	<a href="#">Purchase</a>	<a href="#">Support</a>	<a href="#">Community</a>	<a href="#">About Us</a>	<a href="#">Resources</a>	<a href="#">Legal</a>
-------------------------------	--------------------------	--------------------------	-------------------------	---------------------------	--------------------------	---------------------------	-----------------------