

# Exploring your instances

The Explorer tab lets you explore the instances and databases of your environment. You can choose different views and filters in order to learn more about the data and activity of your SQL Servers instances.

The following is an example of the many options for exploring the information on your environment:

- You can select to show "Data size by tags" to see which of your tags contain the most data.
- Then, you can select a tag name to get more specific information.
- Finally, you can access the tag's instances to get a view of your data size by instances and filtered with the respective tag.

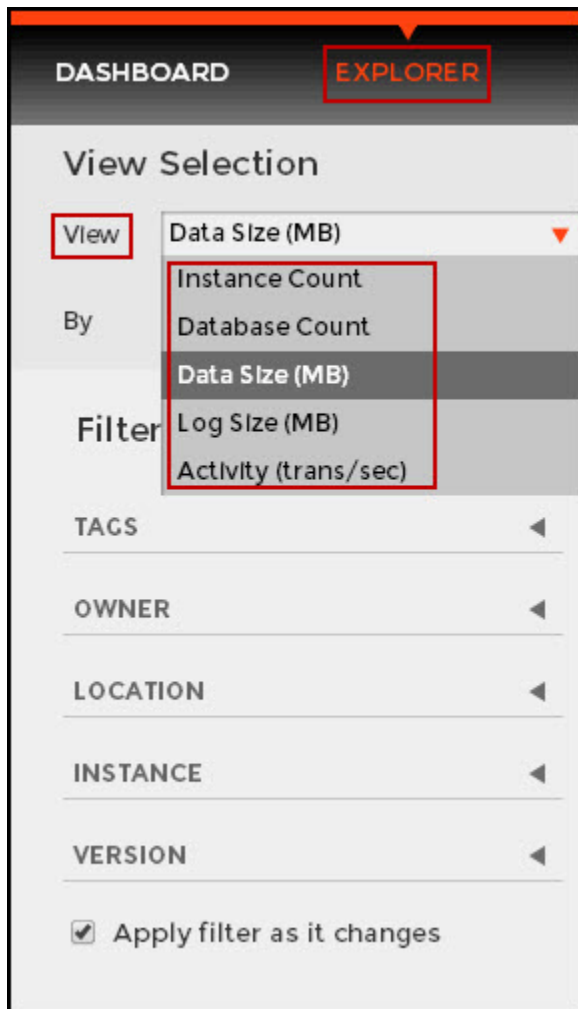
Like this example, you have many different options to select the information you want to see from your environment. By using tags, owners, and locations from your SQL Servers instances, you get significant advantages from this section.

## How do you choose what information you want to see?

The **View Selection** section allows you to choose what specific information or under which main parameter you want SQL Elements to display the information.

You can select to **View** the following type of information:

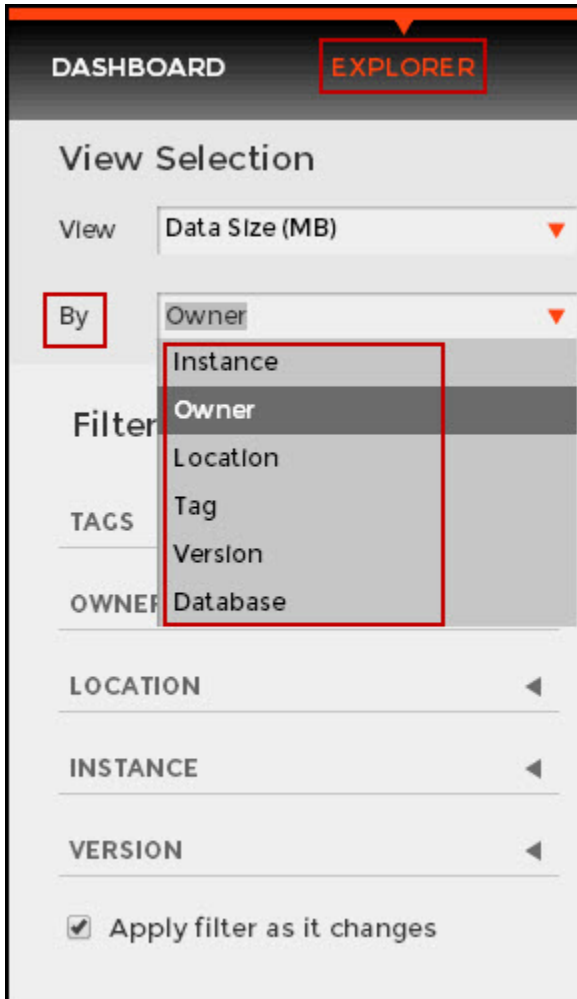
- Instance count
- Database count
- Data size (MB)
- Log size (MB)
- Activity(transactions per second)



Then you choose to see the previous selected information delimited **By** the following options:

- Instance
- Owner
- Location
- Tag

- Server version
- Database



As a result, you may be able to see information such as database count by instance, instance count by location, data size by owner, and other interesting information from your environment. Take into account that some options may only be available depending of what you choose in the **View** and **By** fields.



#### Apply filter as it changes

You can enable the option **Applying filter as it changes** to have immediate information, or you can disable this option when you want to make your selections first and see the requested information after you finish.

## What filters can you use to get more specific information?

After you choose what data you want to see and by which parameter, you can also optionally select from the group of filters to narrow your search criteria. This section contains the following options:

### Tags

This option allows you to determine a specific tag or tags for your selection.

When you click the drop down menu of this section, you can sort the list of tags by name or count, and then choose the tag or tags that you want to include in your selection.

To access to the complete list of tags, you can click **more**.

If you want to remove your selections, click **Remove tag filters**.

### Owners

This option allows you to determine a specific owner or owners for your selection.

When you click the drop down menu of this section, you can see a list of all your environment's owners. Choose the owner or owners that you want to include in your selection.

To access to the complete list of owners, you can click **more**.

If you want to remove your selections, click **Remove owner filters**.

**Location**

This option allows you to determine a specific location or locations for your selection.

When you click the drop down menu of this section, you can see a list of all your environment’s locations. Choose the location or locations that you want to include in your selection.

To access to the complete list of locations, you can click **more**.

If you want to remove your selections, click **Remove location filters**.

**Instance**

This option allows you to determine a specific instance or instances for your selection.

When you click the drop down menu of this section, you can see a list of your registered instances. Choose the instance or instances that you want to include in your selection.

To access to the complete list of instances, you can click **more**.

If you want to remove your selections, click **Remove instance filters**.

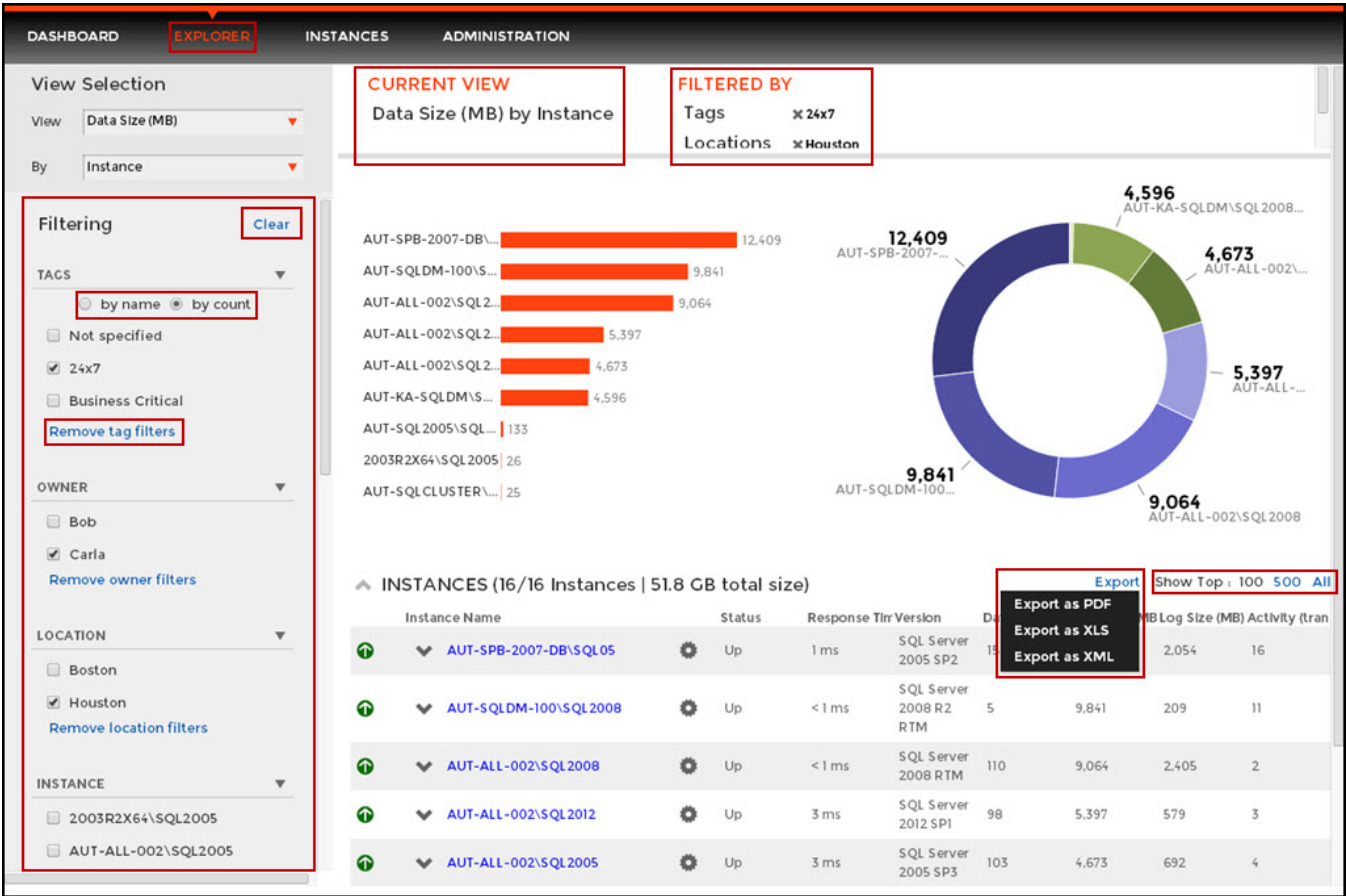
**Version**

This option allows you to determine a specific version or versions for your selection.

When you click the drop down menu of this section, you can see the list of all available versions, choose the version or versions that you want to include in your selection.

To access to the complete list of versions, you can click **more**.

If you want to remove your selections, click **Remove version filters**





#### Tip

On the top section of the filtering options, you can click **Clear** to quickly remove all your chosen filters and select new ones.



#### Filters selected on top

As you filter your information, the options you select appear on the top section of your graphs. You can uncheck from this section to individually remove filters.

## What information can you see after determining your filters?

After you specify the filters you need, SQL Elements displays graphs to provide a visual representation of the data you have selected. The bar and pie graphs let you quickly get a glance of your environment according to your parameters.

You can also choose how many instances SQL Elements will display on your graphs by selecting the top **100**, **500** or **All** instances. This option is located at the bottom right side of your graphs.

Below these graphs, SQL Elements shows you a table of the information that corresponds to your selection.



#### Tip

You can click a database or instance name to access its respective details. For more information on what is available on these views, refer to [Viewing Database Details](#) or [Viewing instance details](#) respectively.

## What options do you have to drill down and get more specific information?



### Drill down to view by instances



When you view high level objects such as tags, owners, locations, or versions, you can drill down to see their respective instances by clicking the arrow icon next to the object you want to see more specific information.

Click  and SQL Elements changes your selection to **View by Instances** and filters it according to the tag, owner, location or version you selected before.

You can go back to your previous view by clicking  on the top left section of your instances table.


For example, if you are viewing "Data Size by Tags", you can click the arrow next to a tag name to drill down the instances that belong to this tag. The view changes to "Data Size by Instances" and filters it by the selected tag.

TAGS (2 Tags   30.1 GB of total data)					
Tags	Instances	Databases	Database Size (MB)	Log Size (MB)	Activity (trans/sec)
 Business Hours	17	120	15,436	3,382	24
 Business Critical	17	120	15,436	3,382	24

INSTANCES (17/0 Instances   15.1 GB of total data)							
Instance Name	Status	Response T	Version	Databases	Database SI	Log Size (MI)	Activity (tra
  AUT-SPB-2007-DB\SQL05	Up	< 1 ms	SQL Server 2005 SP2	14	12,393	1,880	5

### Drill down to view by databases

When you are viewing your information by instances, you can drill down one more level and view by databases.

Click  next to the instance you want to see its respective databases, and SQL Elements displays the list of databases that belong to the respective instance. The view changes to **View by Databases** and filters it by the selected instance.

You can go back to the previous view by clicking  on the top left section of your databases list.

↑ INSTANCES (17/0 Instances | 15.1 GB of total data)

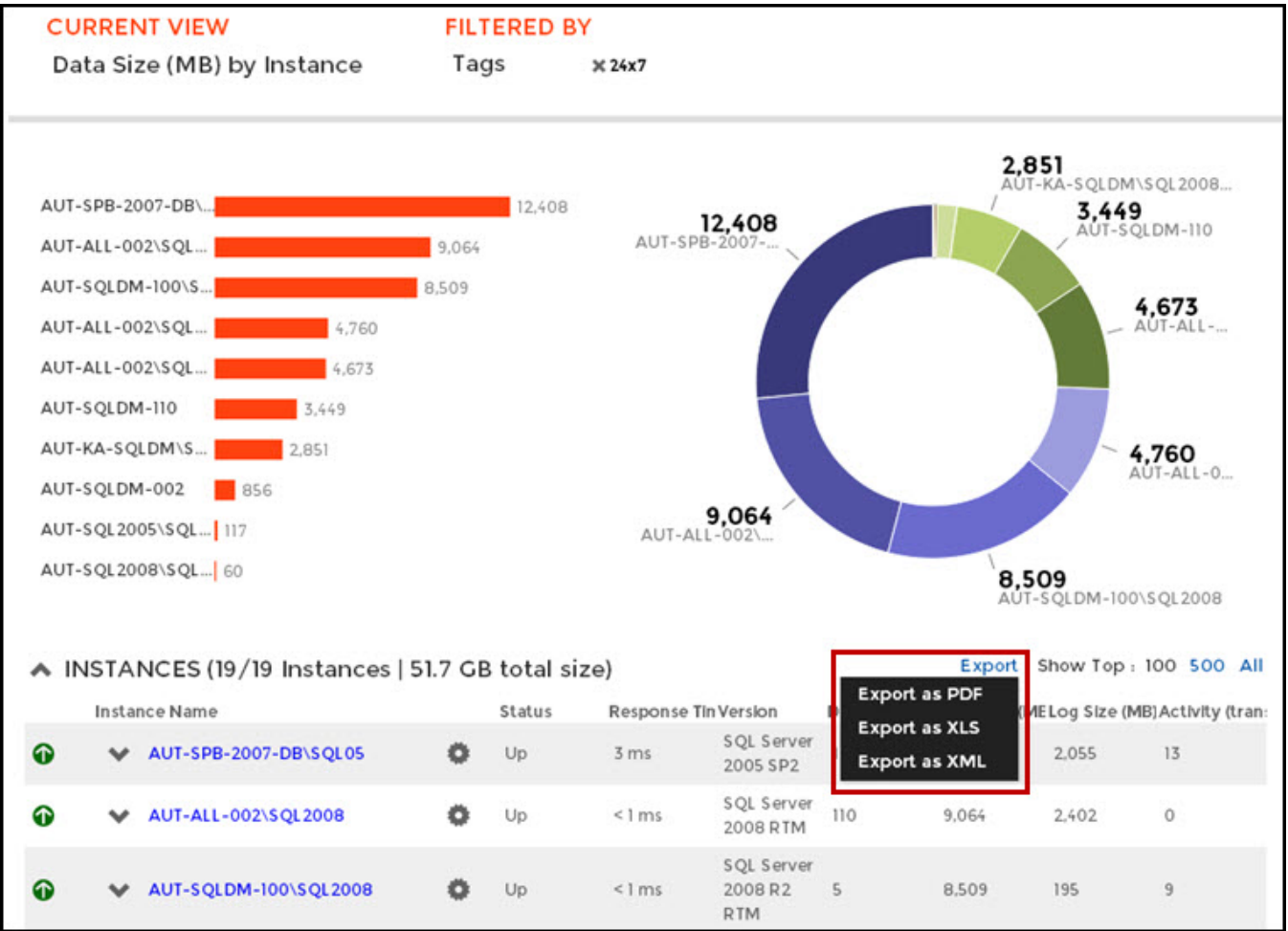
Instance Name	Status	Response Time	Version	Databases	Database Size	Log Size (MB)	Activity (tra
↑ AUT-SPB-2007-DB\SQL05	Up	< 1 ms	SQL Server 2005 SP2	14	12,393	1,880	5

↑ DATABASES (14 Databases | 13.9 GB of total data)

Database Name	Status	Instance Name	Database Size	Database Size	Log Size (MB)	Activity (trans
↑ WSS_Content	Online	AUT-SPB-2007-DB\SQL05	13,589	11,845	1,744	0

**How can you export the information available on the Explorer view?**

You can export the information available on the Explorer view, by clicking the **Export** option on the right-bottom side of your graphs and selecting your preferred format for Exporting: **PDF**, **XLS**, or **XML**.



**Tip**

You can set the number of instances you want SQL Elements to show per page, go to the bottom of the page, type the number you require, and press Enter.